

(Burjassot)

Ref: ONV2506003



New development for sale in Burjassot

Sustainable housing in the heart of Burjassot, Valencia aProperties presents an innovative residential project that redefines the way of living in harmony with the environment. Located in the heart of Burjassot, next to Liria Street—the city's main commercial hub—and just steps from the Town Hall and the university campus. Surrounded by green spaces such as La Granja, Los Silos, and the Huerta de Valencia, it offers all the services you need within easy reach and Metro communication. A new way of living. Live well. Live green. This residential complex offers studios and one- to three-bedroom apartments, designed for those seeking an efficient, and sustainable urban lifestyle. Every detail reflects a firm commitment to the environment: Construction using engineered wood, minimizing the use of high-carbon materials such as concrete and steel. A nearly carbon-neutral building, designed to minimize its environmental impact from the ground up. Renewable energy and the total elimination of fossil fuels, such as gas. Nature-based solutions, with planned landscaping and architecture that favors natural light in every corner. Common areas for socializing, which expand [...]

Burjassot

Surface
64 m² - 145 m²
Units
14
Completion
Q4 2026

- ✓ Views
- ✓ Heating
- ✓ AACC
- ✓ Terrace
- ✓ Lift
- ✓ Has parking

Price from 201,700 €

(Burjassot)

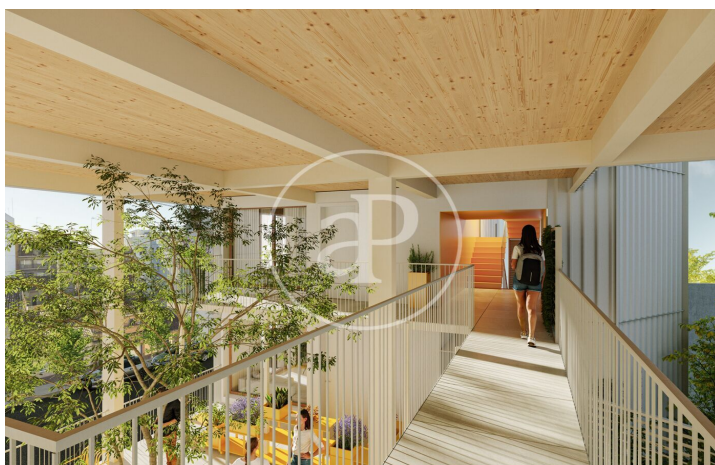
Ref: ONV2506003

Units in this development

Type	Unit	Surface	Terrace	Bedrooms	Bathrooms	Price	State
Flat	Bajo B	98.55 m ²	1 (14 m ²)	1	1	€ 313,200	Available
Flat	1° C	88 m ²	1 (10 m ²)	1	1	€ 270,800	Available
Flat	2° A	144 m ²	1 (10 m ²)	3	1	€ 484,500	Available
Flat	3° A	112 m ²	1 (10 m ²)	2	1	€ 406,900	Available
Flat	3° B	77 m ²	1 (10 m ²)	1	1	€ 284,700	Available
Flat	3° C	136 m ²	1 (4 m ²)	3	2	€ 445,900	Available
Duplex	4° B	79 m ²	1 (9 m ²)	1	1	€ 317,000	Available
Duplex	4° C	145 m ²	1 (19 m ²)	3	2	€ 514,100	Available
Attic	5° A	92 m ²	1 (22 m ²)	2	1	€ 367,500	Available
Duplex	1° A	64 m ²	1 (23 m ²)	-	1	€ 201,700	Available

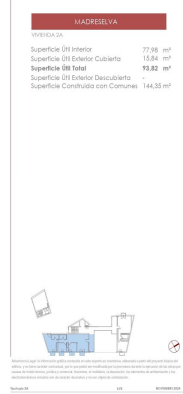
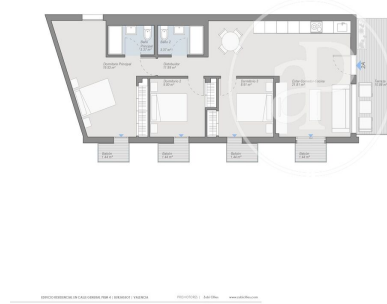
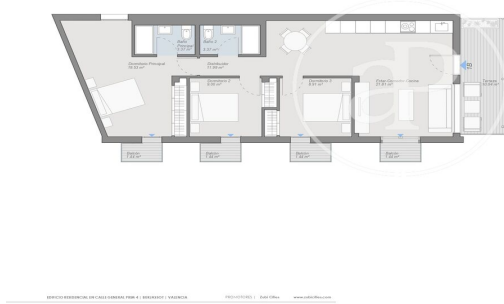
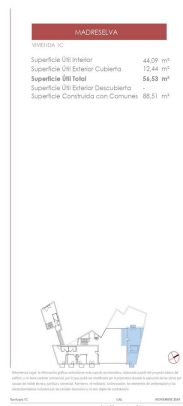
(Burjassot)

Ref: ONV2506003



(Burjassot)

Ref: ONV2506003

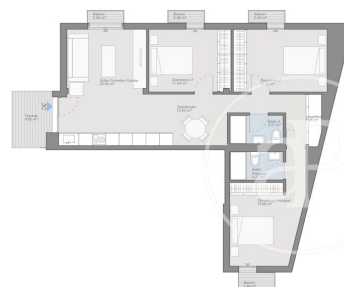


(Burjassot)

Ref: ONV2506003



MADRIDELVA
SUPERFICIE 38
Superficie Útil Interior 39,20 m²
Superficie Útil Exterior Cubierta 12,45 m²
Superficie Útil Total 51,65 m²
Superficie Útil Exterior Descubierta
Superficie Construida con Comunes 77,74 m²



MADRIDELVA
SUPERFICIE 38
Superficie Útil Interior 79,85 m²
Superficie Útil Exterior Cubierta 6,74 m²
Superficie Útil Total 86,59 m²
Superficie Útil Exterior Descubierta
Superficie Construida con Comunes 137,23 m²



MADRIDELVA
SUPERFICIE 44
Superficie Útil Interior 88,40 m²
Superficie Útil Exterior Cubierta 9,93 m²
Superficie Útil Total 98,33 m²
Superficie Útil Exterior Descubierta 4,32 m²
Superficie Construida con Comunes 107,17 m²



The information about any property is not binding to any offer or contract. Any verbal or written declaration made by aProperties with regards to the value or condition of the property should not be considered accurate or factual. The pictures make reference to some parts of the property at the times that they were taken. The areas, dimensions and distances that are given are approximate and should be checked by the client. The images are computer generated and are just an approximate indication of the real appearance of the property; these may change at any time. The information with regards to the property may also change at any time.

Contact us today for more information or to arrange a viewing

Tel: 96 128 59 65 apropertiesvalencia@aproperties.es <https://www.aproperties.es>