



(Parque Boadilla)

Ref: ONM2503004



New Developments for sale in Boadilla

Discover this unique project in Parque Boadilla consisting of 31 detached and semi-detached chalets with 3 and 4 bedrooms. It is an avant-garde design project, with a modern façade formed by volumes covered in natural stone in light and dark tones. The interior layout is completely customisable. Design your home from the interior layout to the smallest detail, all from the hand of the architecture and interior design team. Choose the layout of the spaces, the number of bedrooms and bathrooms, the size of the dressing room or the layout and equipment of your kitchen. Select all the finishes, from the flooring and tiling to the handrail, the paintwork in each room, the taps and light fittings. Enjoy a home with maximum comfort and minimum energy consumption, as it will have, among others, a solar panel system on the roof, geothermal energy, façade insulation and high-performance carpentry, a hot and cold underfloor heating system and room thermostats. A completely personalised home, thanks to the advice of the Architecture and Interior Design Department from the start, with a single objective, to design your home. Can you imagine living here?

Boadilla del Monte / Parque Boadilla

Surface
356 m² - 383 m²
Units
31
Completion
Q3 2026

- ✓ Views
- ✓ Heating
- ✓ Boxroom
- ✓ AACC
- ✓ Terrace
- ✓ Backyard
- ✓ Pool
- ✓ Has parking

PRICE UPON REQUEST

(Parque Boadilla)

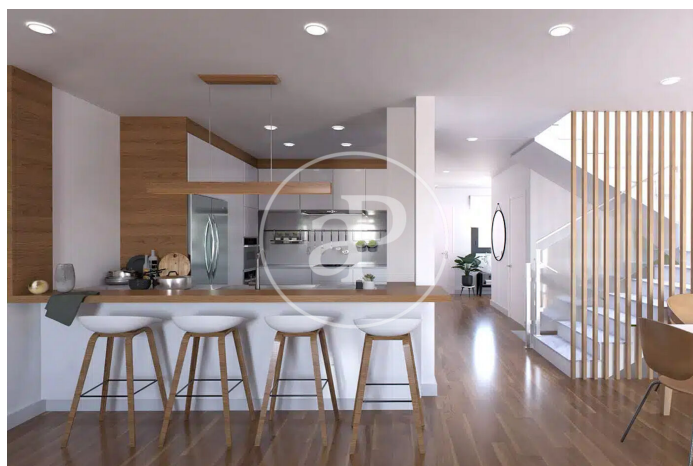
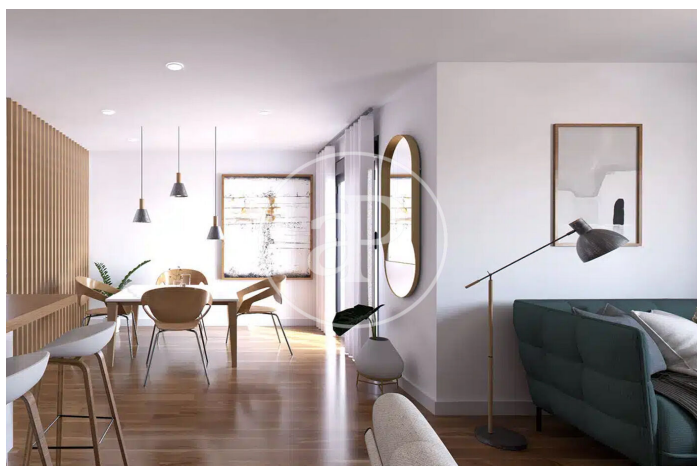
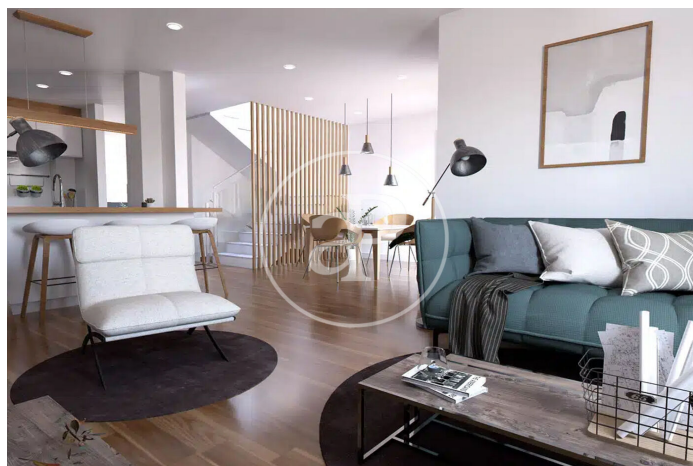
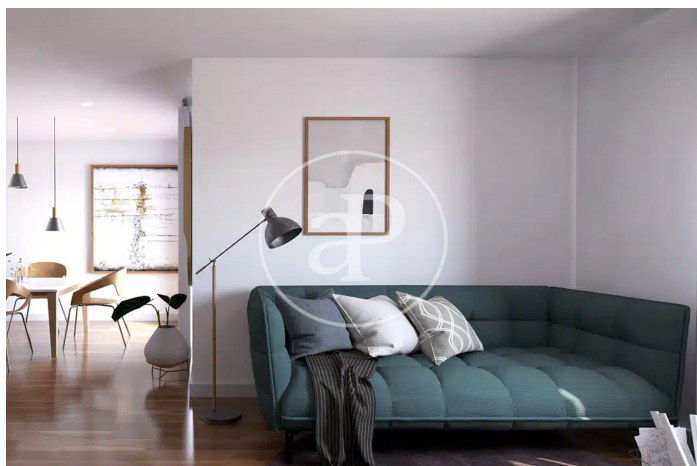
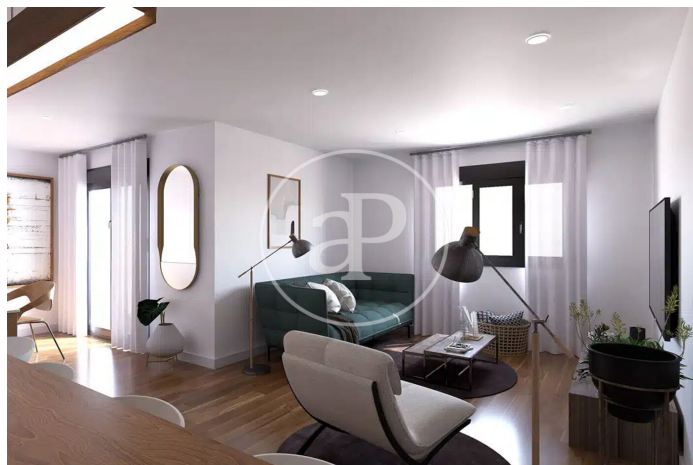
Ref: ONM2503004

Units in this development

Type	Unit	Surface	Terrace	Bedrooms	Bathrooms	Price	State
House	25	356 m ²	1 (504 m ²)	4	3	€ 900,000	Reserved
House	14	383 m ²	1 (472 m ²)	4	3	€ 970,000	Reserved

(Parque Boadilla)

Ref: ONM2503004



(Parque Boadilla)

Ref: ONM2503004



The information about any property is not binding to any offer or contract. Any verbal or written declaration made by aProperties with regards to the value or condition of the property should not be considered accurate or factual. The pictures make reference to some parts of the property at the times that they were taken. The areas, dimensions and distances that are given are approximate and should be checked by the client. The images are computer generated and are just an approximate indication of the real appearance of the property; these may change at any time. The information with regards to the property may also change at any time.

Contact us today for more information or to arrange a viewing

Tel: 91 800 54 65 apropertiesmadrid@aproperties.es <https://www.aproperties.es>