



(Las Lomas)

Ref: ONM2506007



House for sale in Bonanza (Boadilla del Monte)

Appropriates presents an exclusive new-build detached villa in the exclusive Bonanza development in Boadilla del Monte. This exclusive area with 24-hour security offers maximum security, privacy, and an exclusive family lifestyle. Its spacious green areas with views of the Madrid mountains, manicured gardens, sports facilities, a swimming pool, and a solarium, along with the quality of its homes, consolidate its status as one of the most prestigious residential areas in the area. Minimalist architecture that blends with the surroundings. This luxury villa, with over 700 square meters of built area, stands on a generous landscaped plot, conceived with a luxurious and Zen-like contemporary aesthetic, combining horizontal volumes, clean lines, and large windows that flood each space with light. The use of premium qualities from Porcelanosa, interior gardens, and flat roofs reinforces the sense of connection with the landscape, creating an atmosphere of serenity, balance, and sophistication. Interior spaces designed for well-being. The home stands out for its fluid and functional layout, naturally differentiating between social and private areas. Each volume has been designed with [...]

Boadilla del Monte / Las Lomas

Surface
700 m² - 700 m²
Completion
Q2 2025

- ✓ Views
- ✓ Heating
- ✓ Boxroom
- ✓ AACC
- ✓ Terrace
- ✓ Backyard
- ✓ Pool
- ✓ Gym
- ✓ Security
- ✓ Has parking

Price from 3,390,000 €

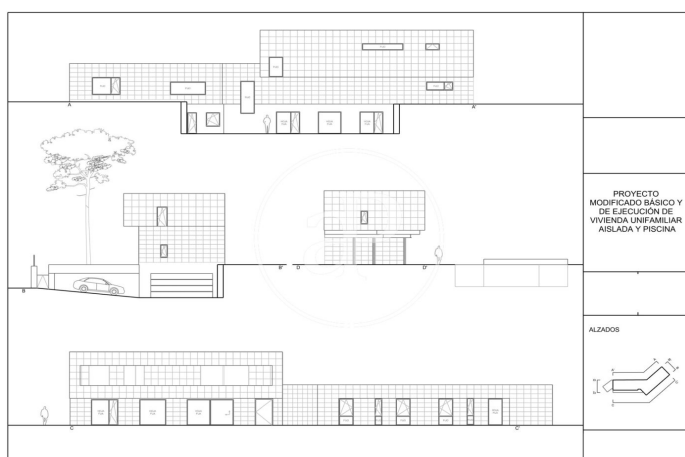
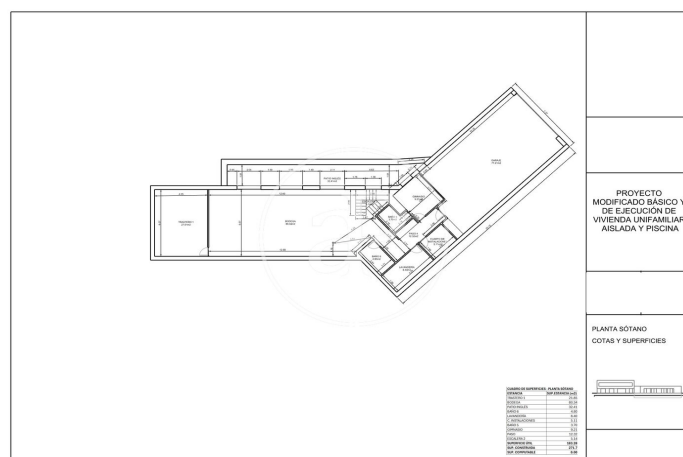
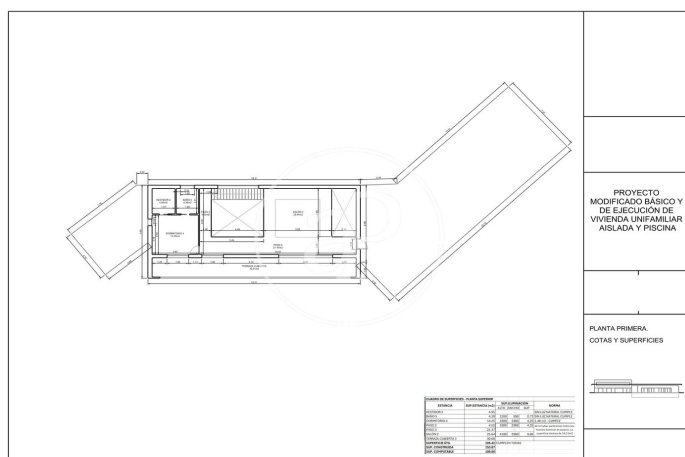
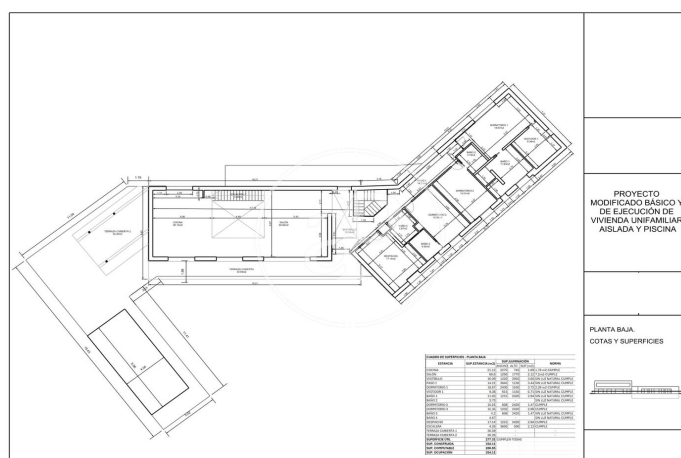
(Las Lomas)*Ref: ONM2506007*

Units in this development

Type	Surface	Terrace	Bedrooms	Bathrooms	Price	State
House	700 m ²	2 (98 m ²)	5	7	€ 3,390,000	Available

(Las Lomas)

Ref: ONM2506007



The information about any property is not binding to any offer or contract. Any verbal or written declaration made by aProperties with regards to the value or condition of the property should not be considered accurate or factual. The pictures make reference to some parts of the property at the times that they were taken. The areas, dimensions and distances that are given are approximate and should be checked by the client. The images are computer generated and are just an approximate indication of the real appearance of the property; these may change at any time. The information with regards to the property may also change at any time.

Contact us today for more information or to arrange a viewing

Tel: 91 800 54 65 apropertiesmadrid@aproperties.es <https://www.aproperties.es>