

El Pastel, Boadilla del Monte

REF. AMO2601001

# House for rent in El Pastel (Boadilla del Monte)

## Features

- ✓ Heating
- ✓ AACC
- ✓ Backyard
- ✓ Gym
- ✓ Concierge
- ✓ Boxroom
- ✓ Terrace
- ✓ Pool
- ✓ Security
- ✓ Has parking

Price

**4,500 €**

Surface

**364 m<sup>2</sup>**

Bedrooms

**6**

Bathrooms

**6**



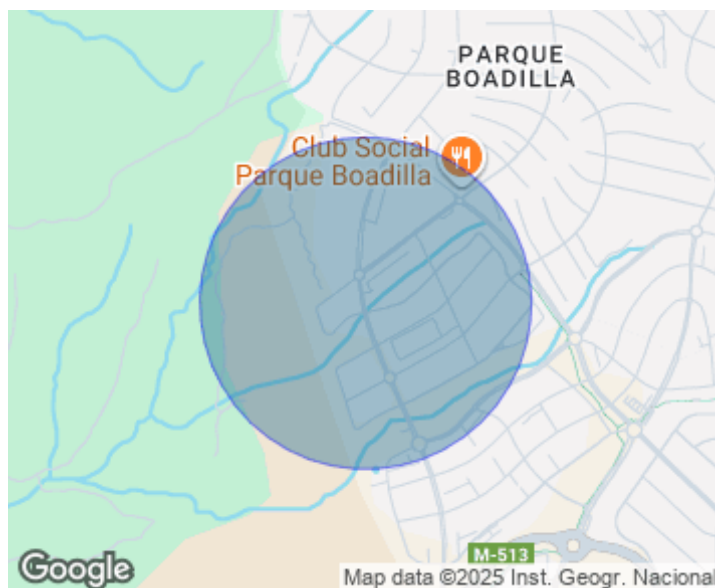
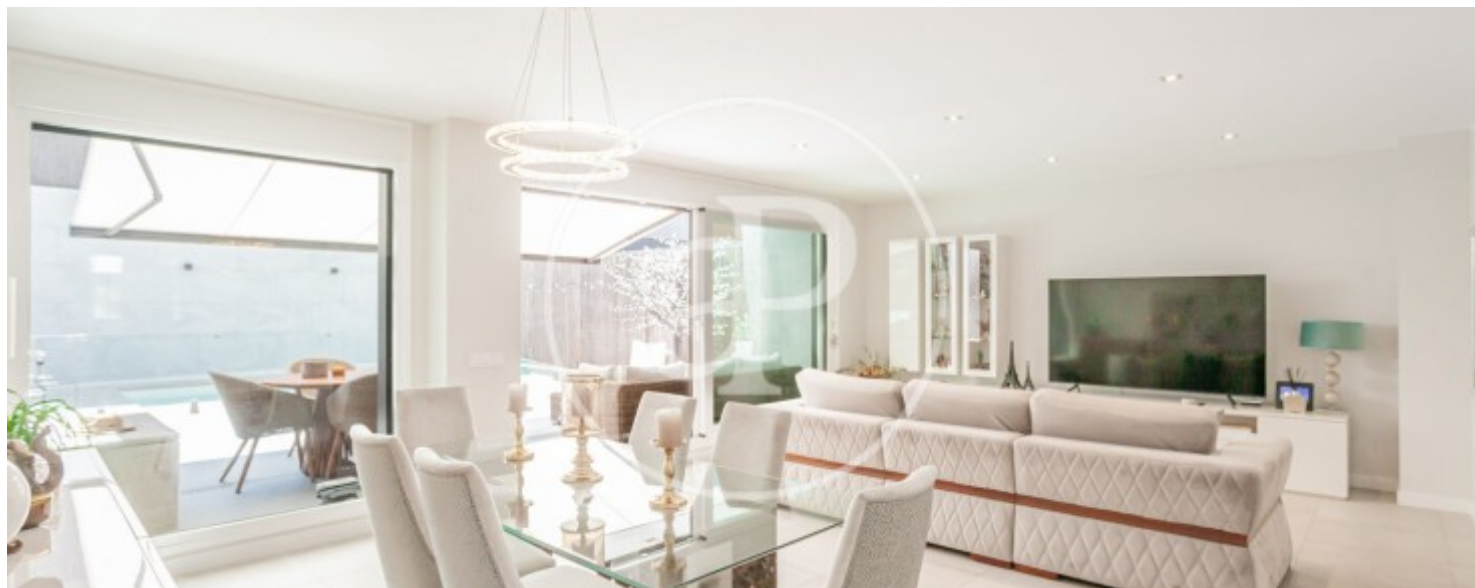
Discover this spectacular townhouse, located in one of the most exclusive urbanizations of Boadilla del Monte! The common areas of the urbanization offer a wide range of first class amenities, such as swimming pool, paddle and tennis courts, bar, restaurant, gym, small beauty center and 24 hour security. The house has 364 square meters built, distributed over three floors. The main floor welcomes us with an entrance hall with closet, a bedroom / office, a bathroom, a fully equipped kitchen and a large living room that stands out for its excellent natural lighting thanks to its large windows. Outside, the garden includes a cozy porch and a saline water pool. The second floor is distributed in four bedrooms, two of them en suite and two additional bedrooms that share a bathroom. In the basement we find

a large room equipped with sports machines, a room for the service with bathroom, a laundry room and a small patio that brings natural light to the whole area. The qualities of the house are excellent, with air conditioning, underfloor heating, geothermal system and solar panels. The location is unbeatable, close to all services, supermarkets and schools, which can be reached on foot. It also has an excellent transport network and connection to the M-50. This villa is ideal for those who are looking for a luxury home with all the comforts and a privileged location. Do not miss the...

**Contact us,**  
we will be happy to assist you,  
to offer you more details and information.

El Pastel, Boadilla del Monte

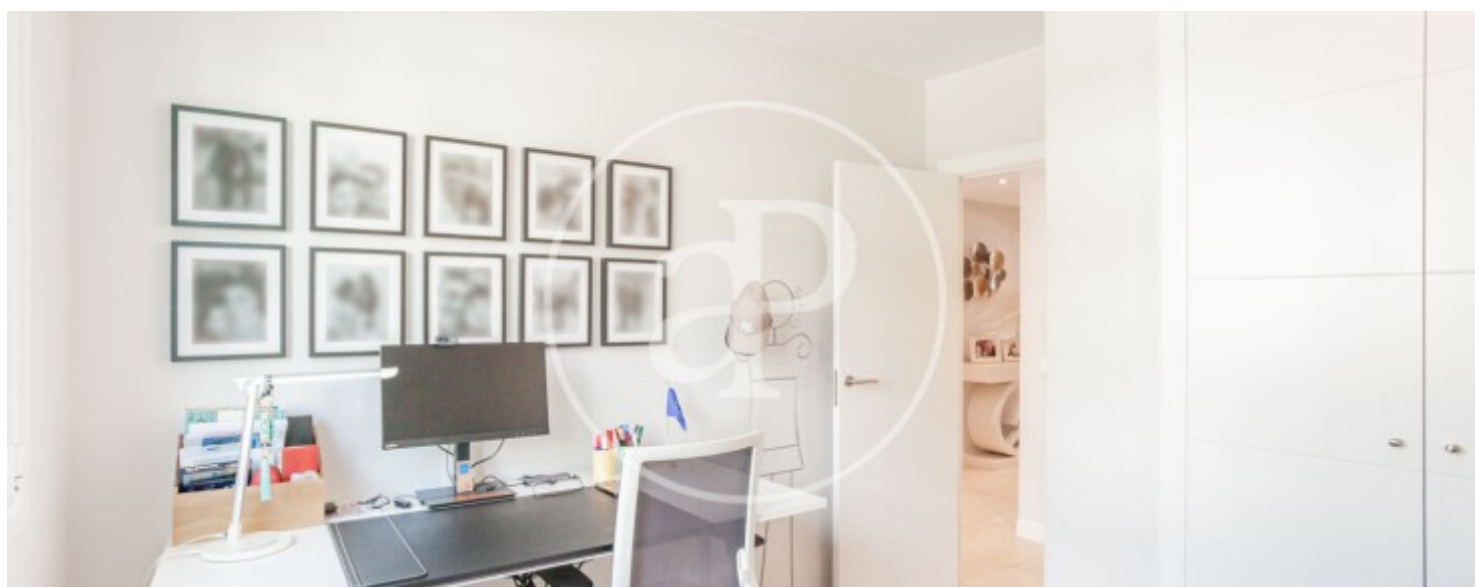
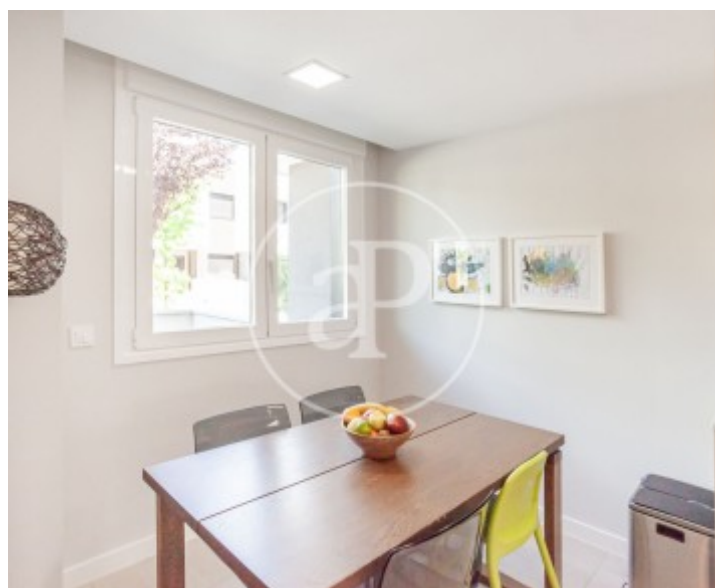
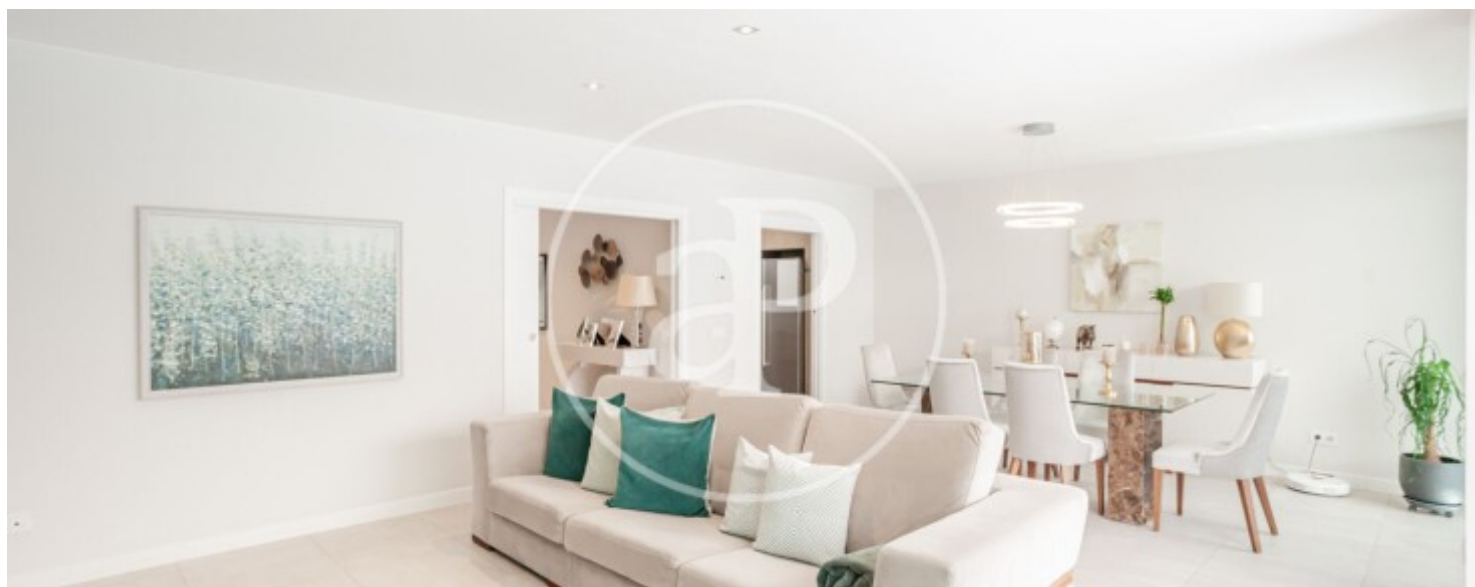
REF. AMO2601001





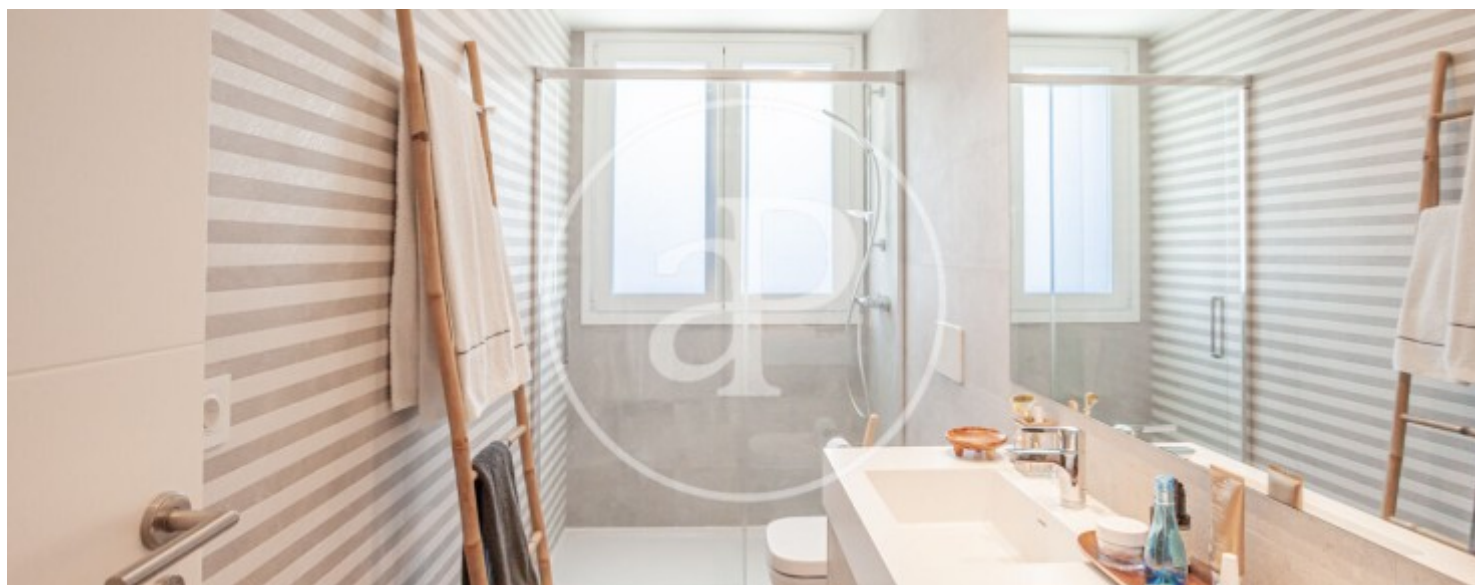
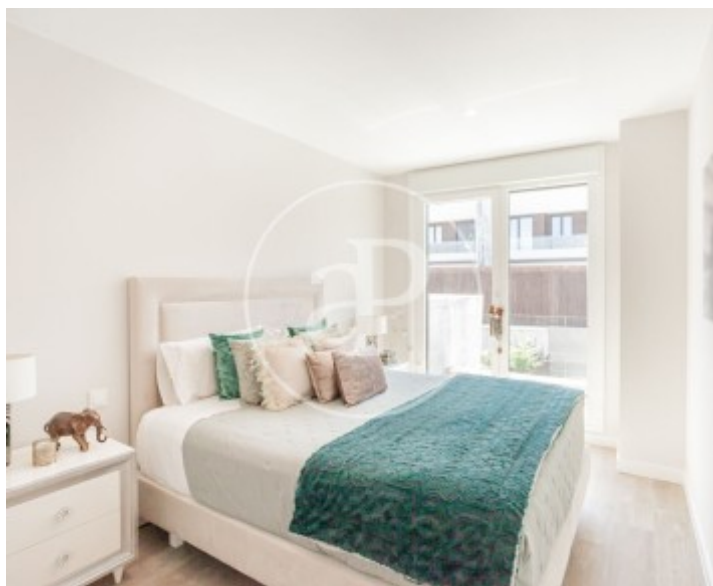
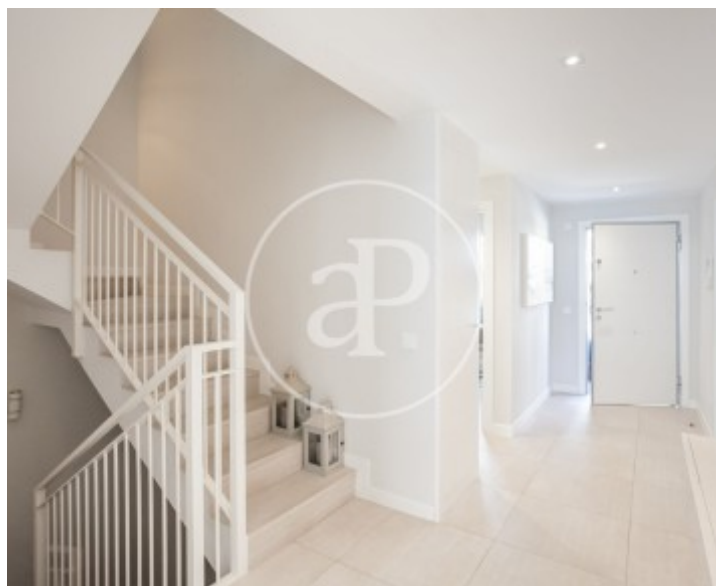
El Pastel, Boadilla del Monte

REF. AMO2601001



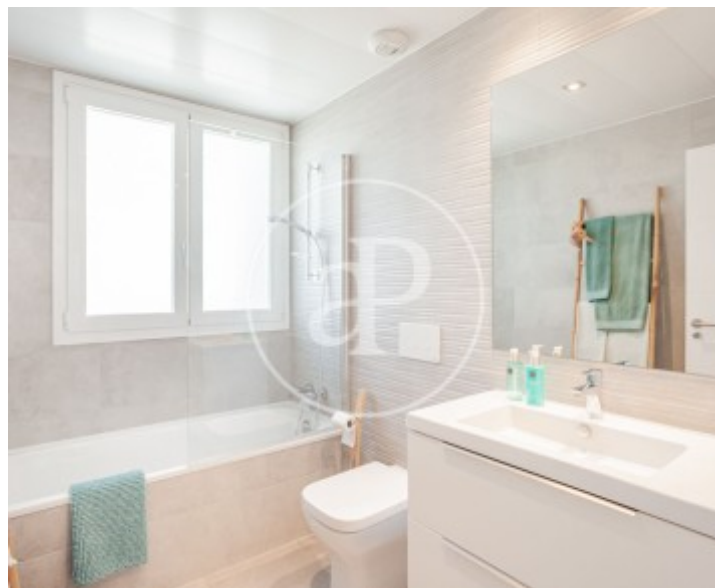
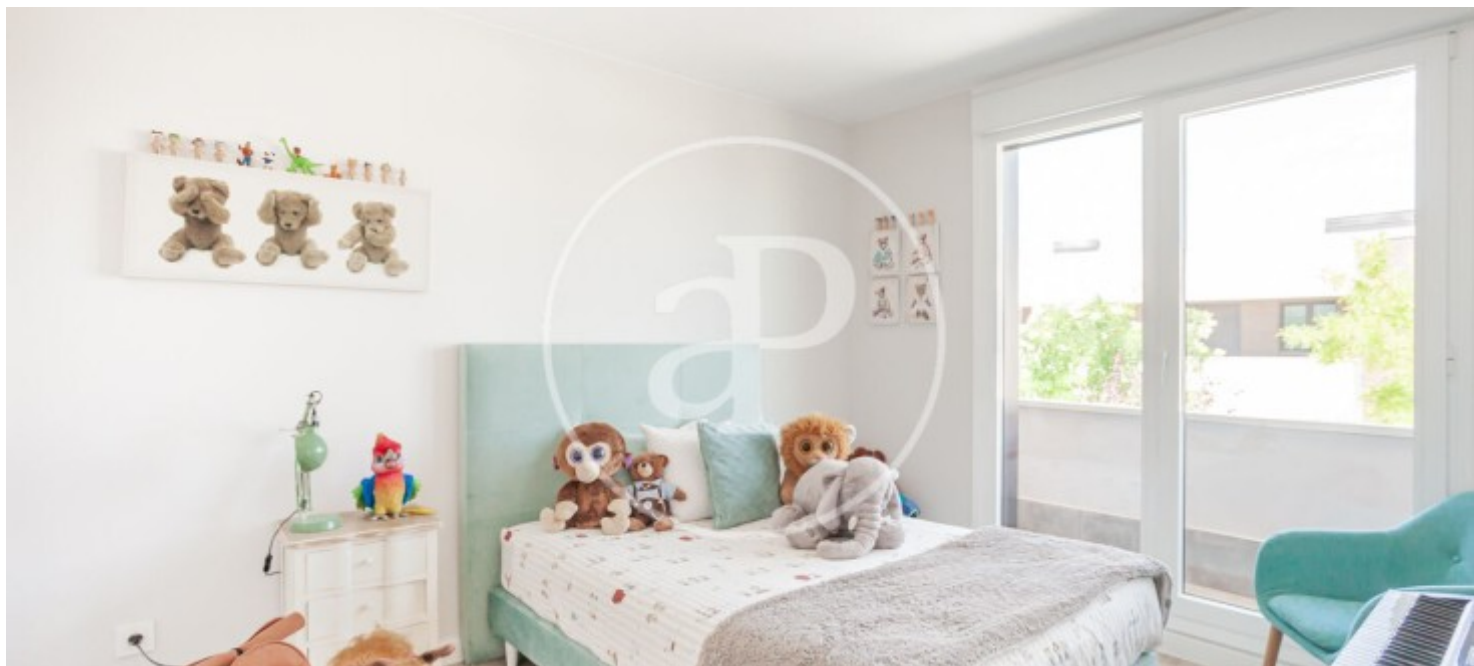
El Pastel, Boadilla del Monte

REF. AMO2601001



El Pastel, Boadilla del Monte

REF. AMO2601001



The information about any property is not binding to any offer or contract. Any verbal or written declaration made by aProperties with regards to the value or condition of the property should not be considered accurate or factual. The pictures make reference to some parts of the property at the times that they were taken. The areas, dimensions and distances that are given are approximate and should be checked by the client. The images are computer generated and are just an approximate indication of the real appearance of the property; these may change at any time. The information with regards to the property may also change at any time.

For **more information** or  
to make an appointment

[apropertiesmadrid@aproperties.es](mailto:apropertiesmadrid@aproperties.es)  
Tel: 91 800 54 65  
[www.aproperties.es](http://www.aproperties.es)