

Sencelles, Binissalem

REF. VPM2305014



House for sale in Biniali - Sencelles

Features

- ✓ Views
- ✓ Heating
- ✓ Furnished
- ✓ Boxroom
- ✓ AACC
- ✓ Terrace
- ✓ Backyard
- ✓ Security
- ✓ Has parking

Price

1,200,000 €

Surface

241 m²

Bedrooms

5

Bathrooms

3



This house is located in a privileged and absolutely quiet and private area in Biniali-Sencelles, just 25 minutes by car from Palma and 25 minutes by car from Palma Airport.

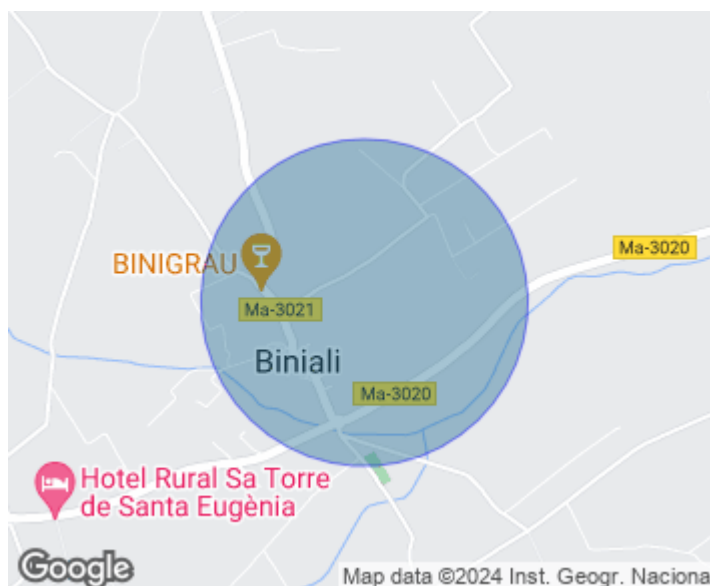
The living space has a total of five bedrooms and three bathrooms, one of which is en-suite. Outside, the property offers open terraces, patio with the possibility of building a swimming pool. The imposing ground floor consists of a large living room with fireplace and another room with kitchen and two bedrooms. There is also a toilet, a laundry room, a terrace with a porch area, a well and a cistern. On the first floor, which is accessed by a beautiful staircase, there are three double

bedrooms, one with an en-suite bathroom, and a dressing room. The whole house enjoys direct lighting, exterior wood carpentry, exterior parking spaces plus a covered garage and a large garden with fruit trees. The house is equipped with central heating that works through a 1400 liter diesel tank, outbuildings, equipped kitchen, terraces and air conditioning. CAN YOU IMAGINE LIVING HERE? We await your call! Do not miss this magnificent investment!

Contact us,
we will be happy to assist you,
to offer you more details and information.

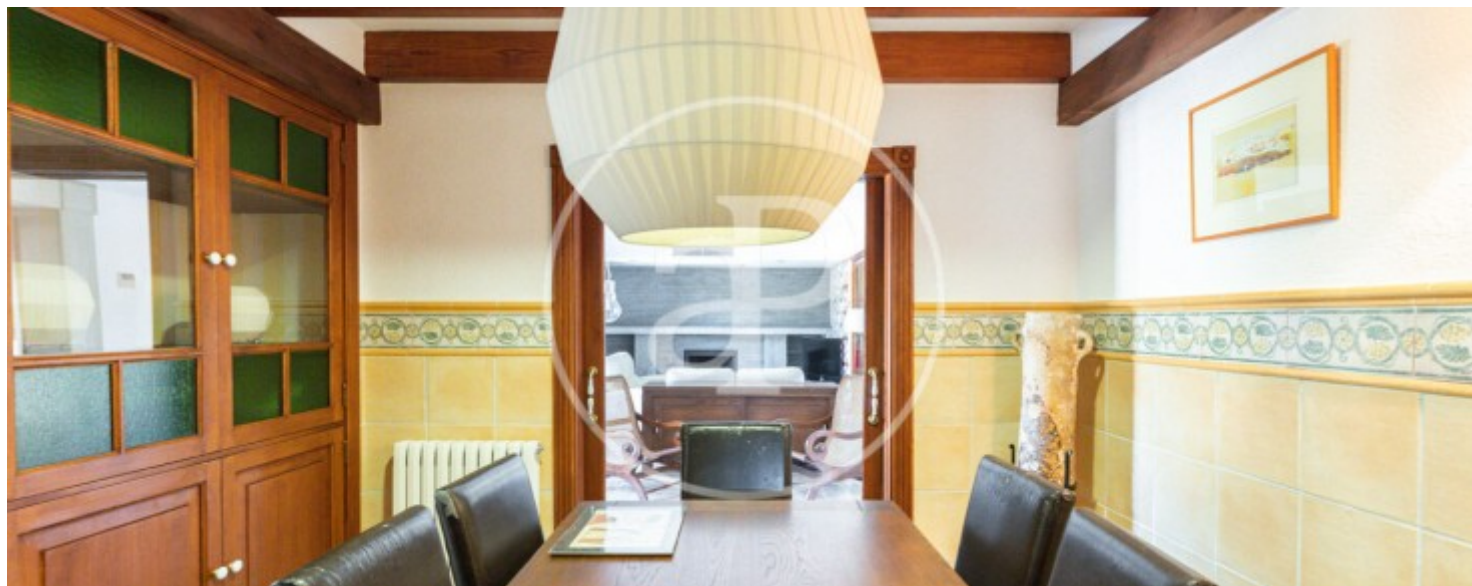
Sencelles, Binissalem

REF. VPM2305014



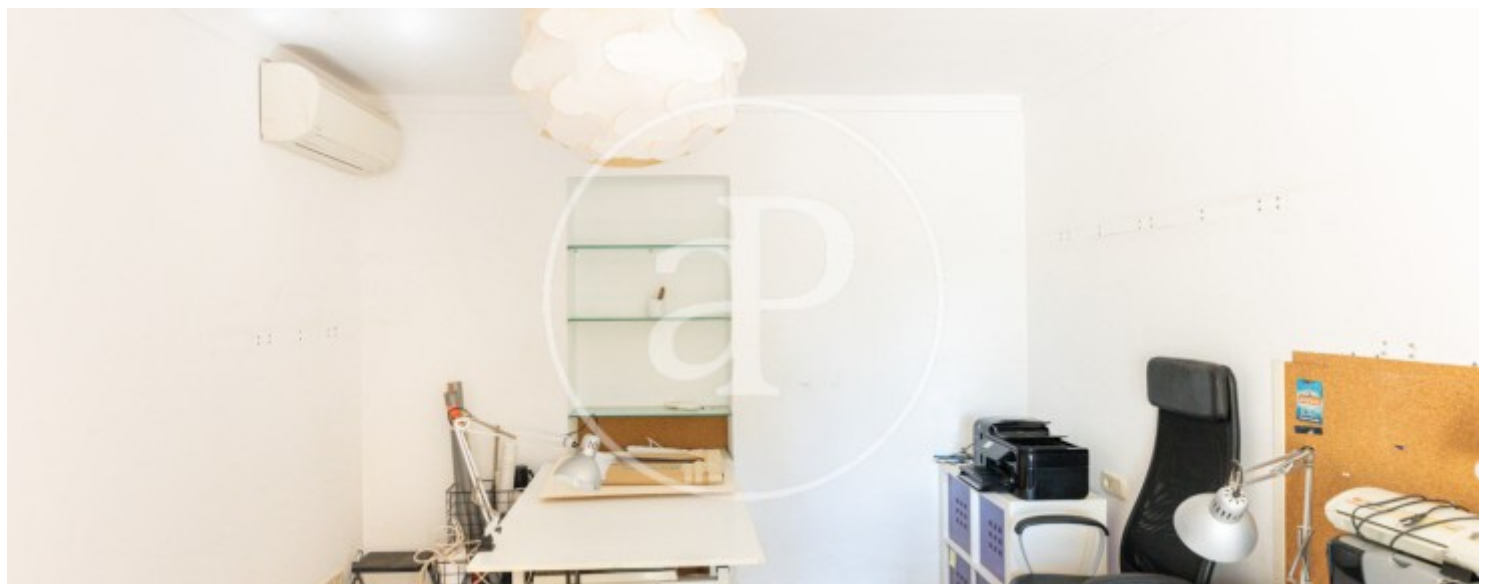
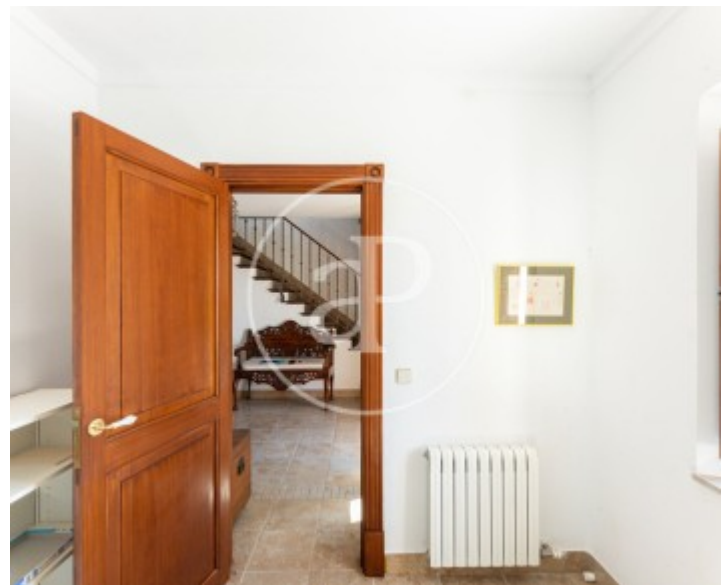
Sencelles, Binissalem

REF. VPM2305014



Sencelles, Binissalem

REF. VPM2305014





APROPERTIES
REAL ESTATE

Calle Unió 9
07001 Palma
T. 871 16 01 60
www.aproperties.es

Sencelles, Binissalem

REF. VPM2305014



The information about any property is not binding to any offer or contract. Any verbal or written declaration made by aProperties with regards to the value or condition of the property should not be considered accurate or factual. The pictures make reference to some parts of the property at the times that they were taken. The areas, dimensions and distances that are given are approximate and should be checked by the client. The images are computer generated and are just an approximate indication of the real appearance of the property; these may change at any time. The information with regards to the property may also change at any time.



**For more information or
to make an appointment**

apropertiespalma@aproperties.es
Tel: 871 16 01 60
www.aproperties.es