

Sencelles, Binissalem

REF. APMS2310035



## House for rent in Sencelles

### Features

- ✓ Heating
- ✓ Furnished
- ✓ Boxroom
- ✓ AACC
- ✓ Backyard

Price

**1,650 €**

Surface

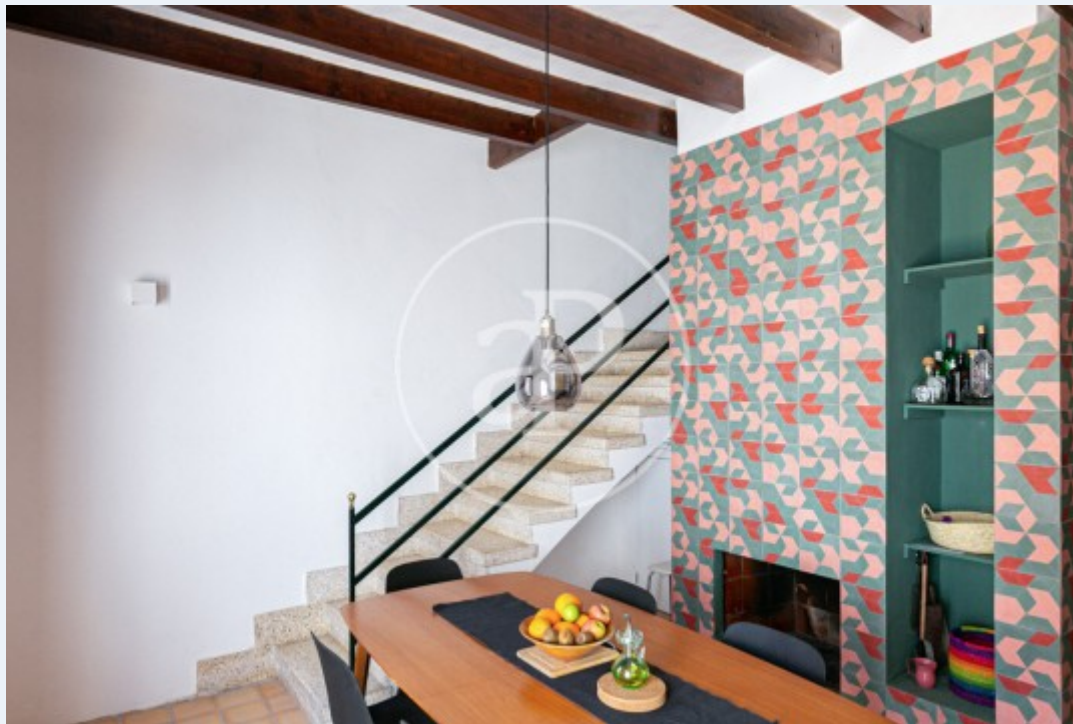
**165 m<sup>2</sup>**

Bedrooms

**4**

Bathrooms

**2**



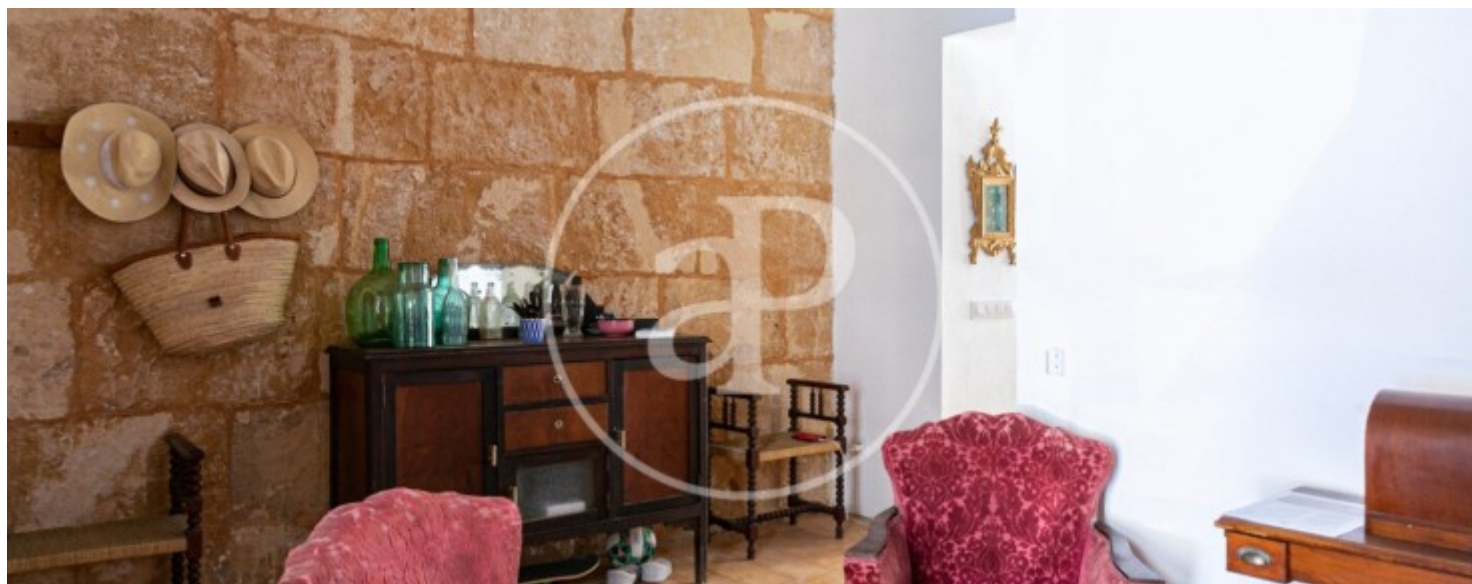
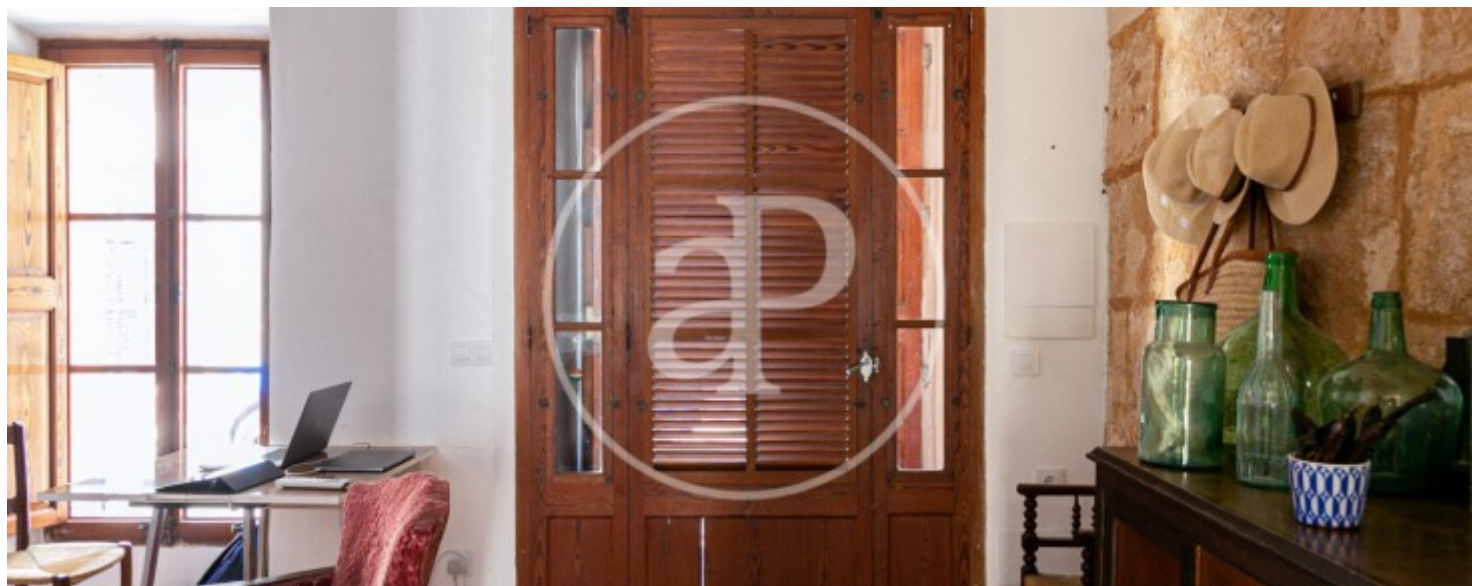
AVAILABLE FOR SHORT STAY ONLY - 11 MONTHS  
MAXIMUM Four bedroom house with small garden for rent in the charming village of Sencelles, less than 30 minutes from Palma, and only a few minutes from the Tramontana mountain range, we find this renovated semi-detached house with traditional character and high quality finishings. The entrance hall gives access to the day room with a complete bathroom with shower, next to it there is a fully equipped kitchen with a wood burning fireplace and a door leading to the patio. Going up the stairs we find the large master bedroom, next to it we find a double bedroom suite and next to it a complete bathroom with shower. Towards the third floor of the house we have a living room and two bedrooms, one of them double and the other single, we also find the laundry area.

The whole house has hot and cold air conditioning in all rooms. High ceilings with traditional wooden beams, white walls and ceramic tiled floors. Linen, bed linen and towels included. Available from the 1st of September can you imagine living here?

**Contact us,**  
we will be happy to assist you,  
to offer you more details and information.

Sencelles, Binissalem

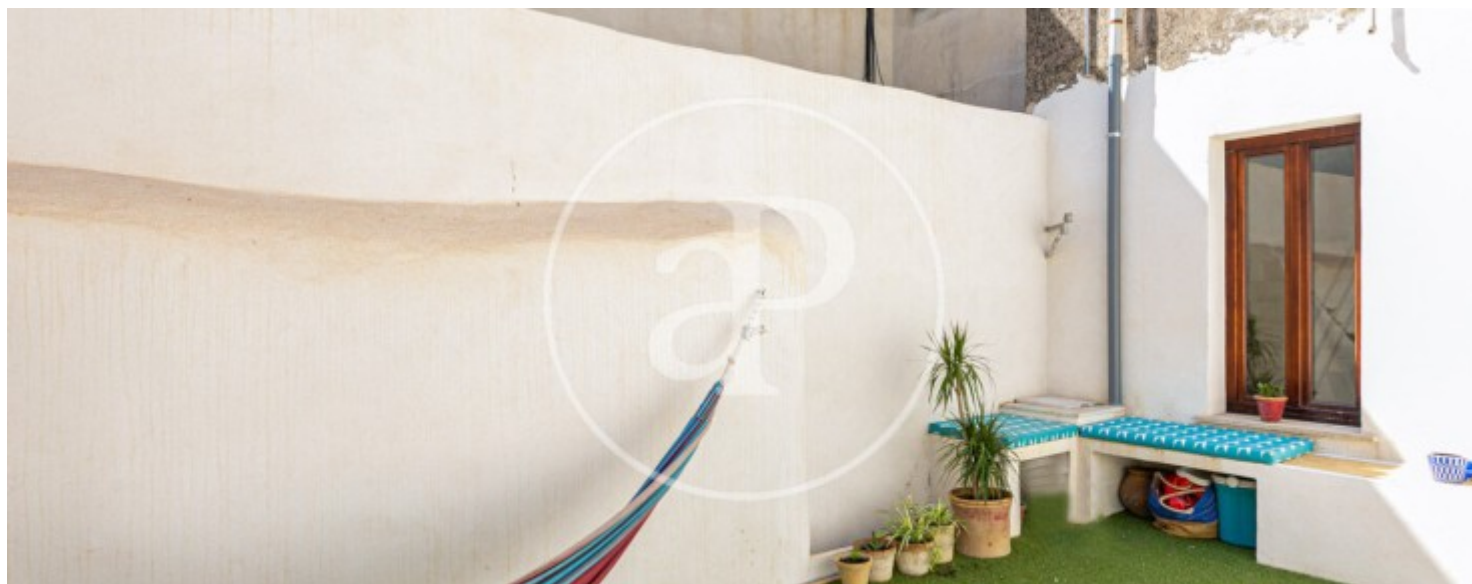
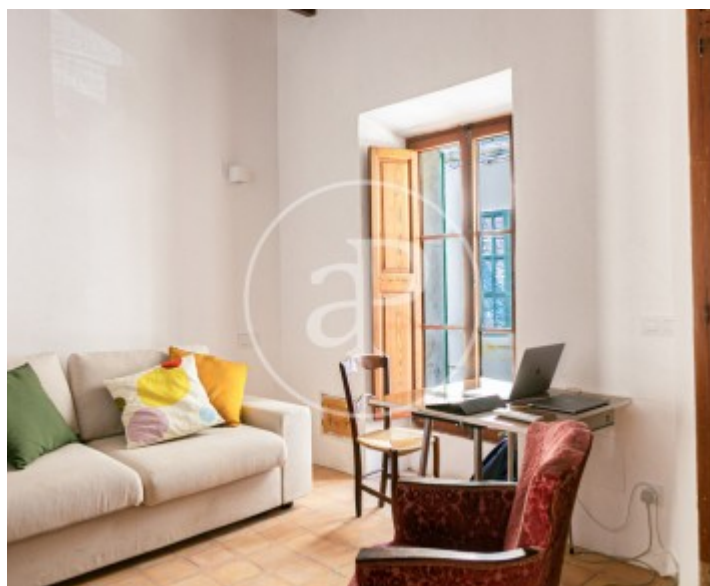
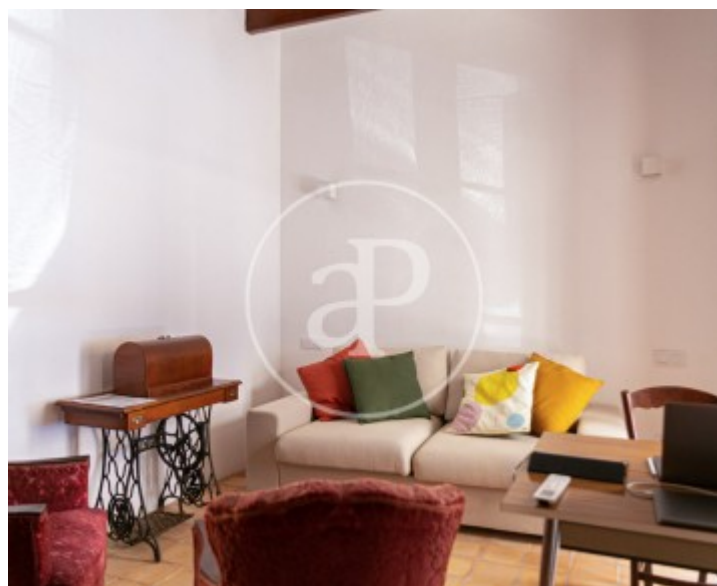
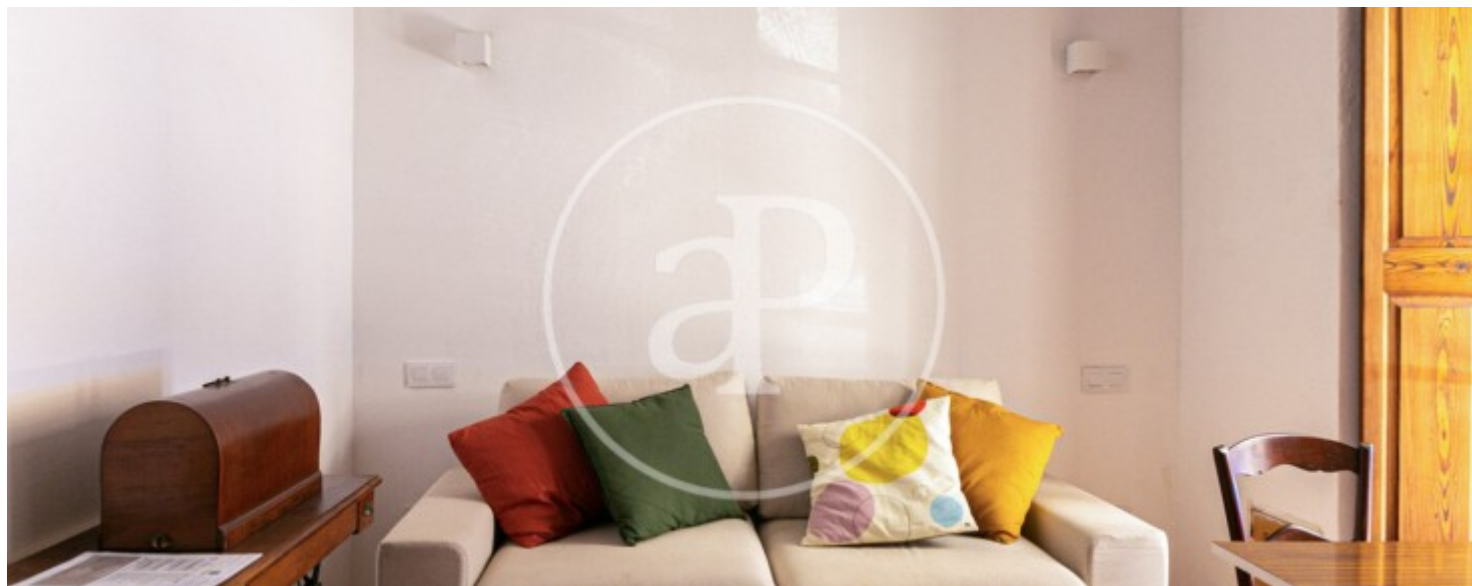
REF. APMS2310035





Sencelles, Binissalem

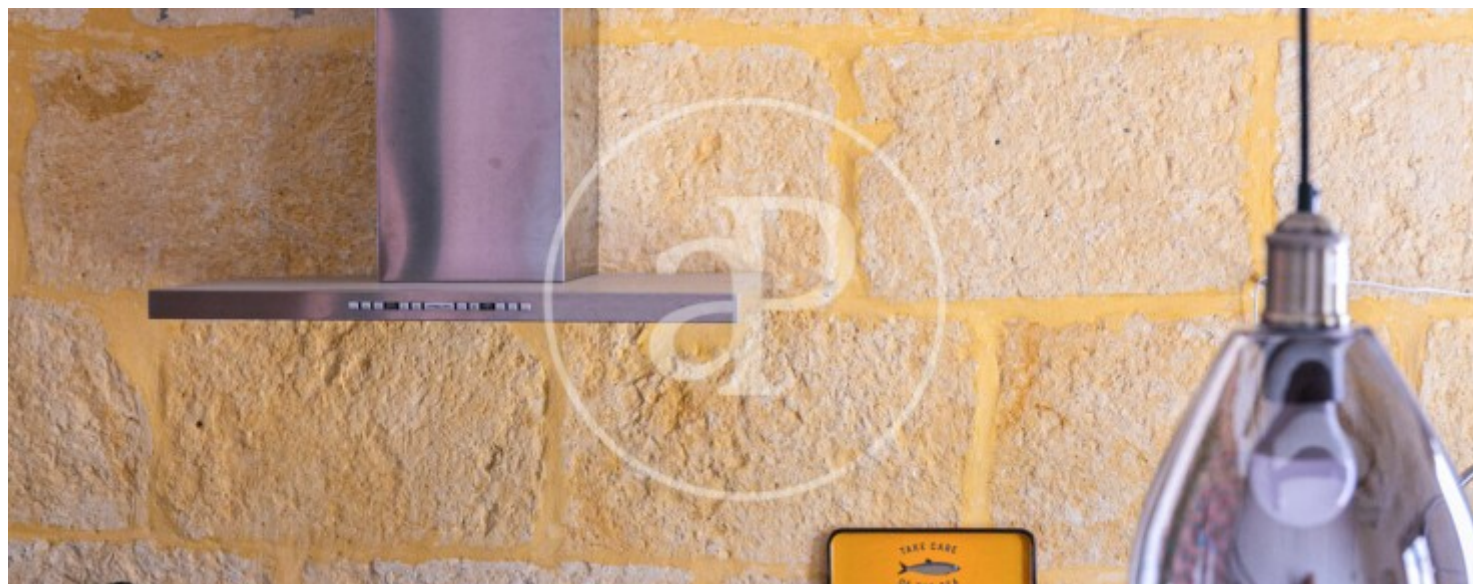
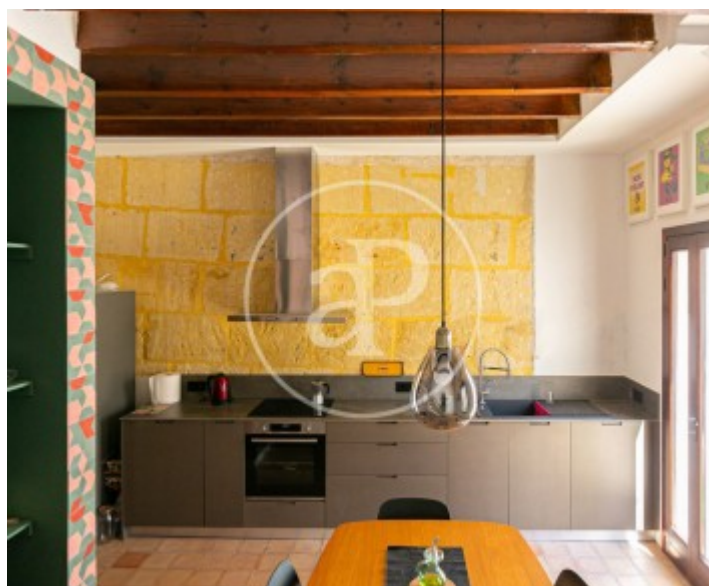
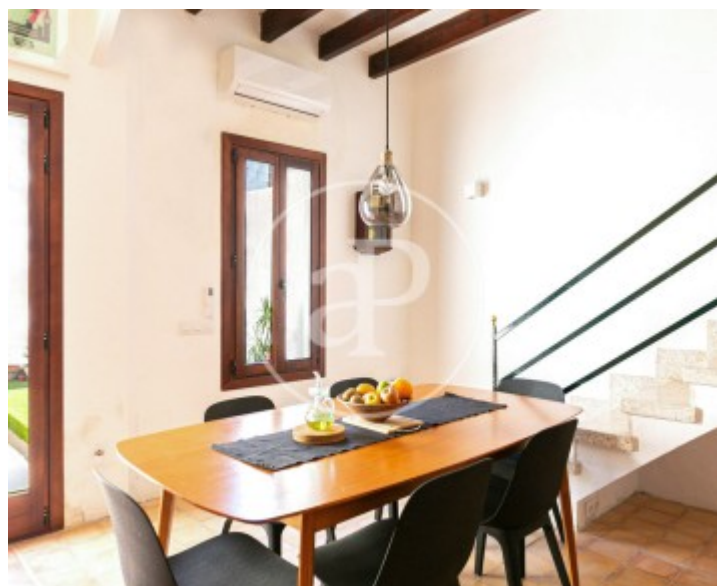
REF. APMS2310035





Sencelles, Binissalem

REF. APMS2310035





Sencelles, Binissalem

REF. APMS2310035



The information about any property is not binding to any offer or contract. Any verbal or written declaration made by aProperties with regards to the value or condition of the property should not be considered accurate or factual. The pictures make reference to some parts of the property at the times that they were taken. The areas, dimensions and distances that are given are approximate and should be checked by the client. The images are computer generated and are just an approximate indication of the real appearance of the property; these may change at any time. The information with regards to the property may also change at any time.



For **more information** or  
to make an appointment

[apropertiespalma@aproperties.es](mailto:apropertiespalma@aproperties.es)  
Tel: 871 16 01 60  
[www.aproperties.es](http://www.aproperties.es)