

Sencelles, Binissalem

REF. VPM2208014



Finca with two independent houses for sale in Sencelles

Features

- ✓ Heating
- ✓ Furnished
- ✓ Boxroom
- ✓ AACC
- ✓ Terrace
- ✓ Backyard
- ✓ Pool
- ✓ Has parking

Price

2,000,000 €

Surface

460 m²

Bedrooms

7

Bathrooms

4



This spectacular rustic finca in the Pla de Mallorca, in the area of Sencelles, has two separate and independent houses on a plot of 28.

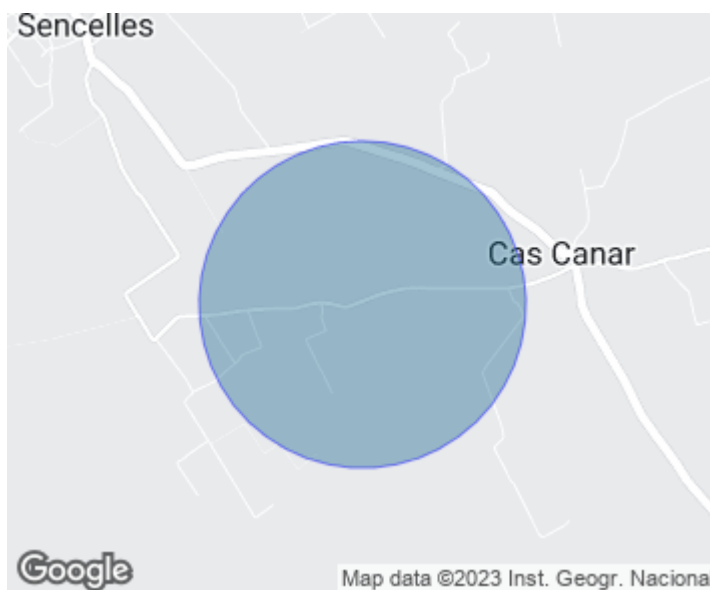
000 m². The first house, of approx. 250 sqm on two floors, has three very spacious double bedrooms and two complete bathrooms, a large and bright living room with fireplace and air conditioning and a fully fitted kitchen with all appliances. Recently renovated, the second house has an ample living room with fireplace and open plan kitchen, fully equipped with all appliances, two double bedrooms with a shared bathroom on the ground floor and, on the second floor, in duplex style, it includes another two bedrooms plus a shared

bathroom. The duplex style of this first floor makes the house very airy, with the living room ceilings 6 metres high, all set over 200 sqm. Outdoors, the large barbecue area and the swimming pool are shared by both houses. The finca also has its own water well and both houses are delivered fully furnished. Can you imagine living here? We look forward to your call!

Contact us,
we will be happy to assist you,
to offer you more details and information.

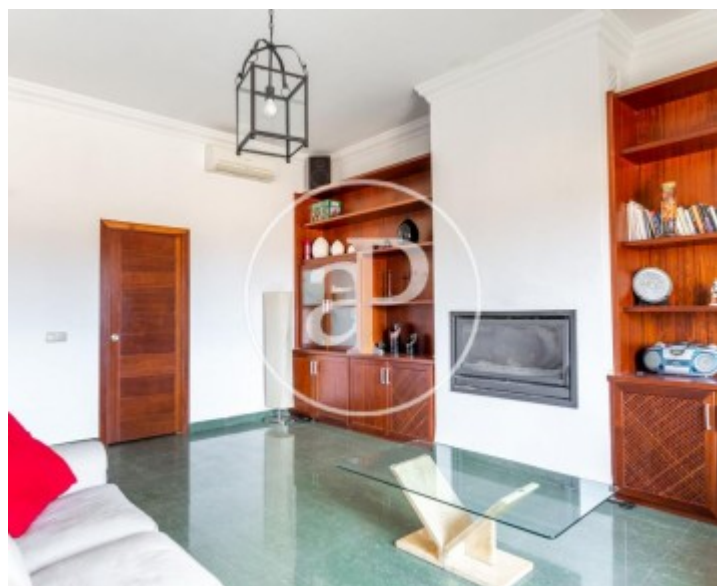
Sencelles, Binissalem

REF. VPM2208014



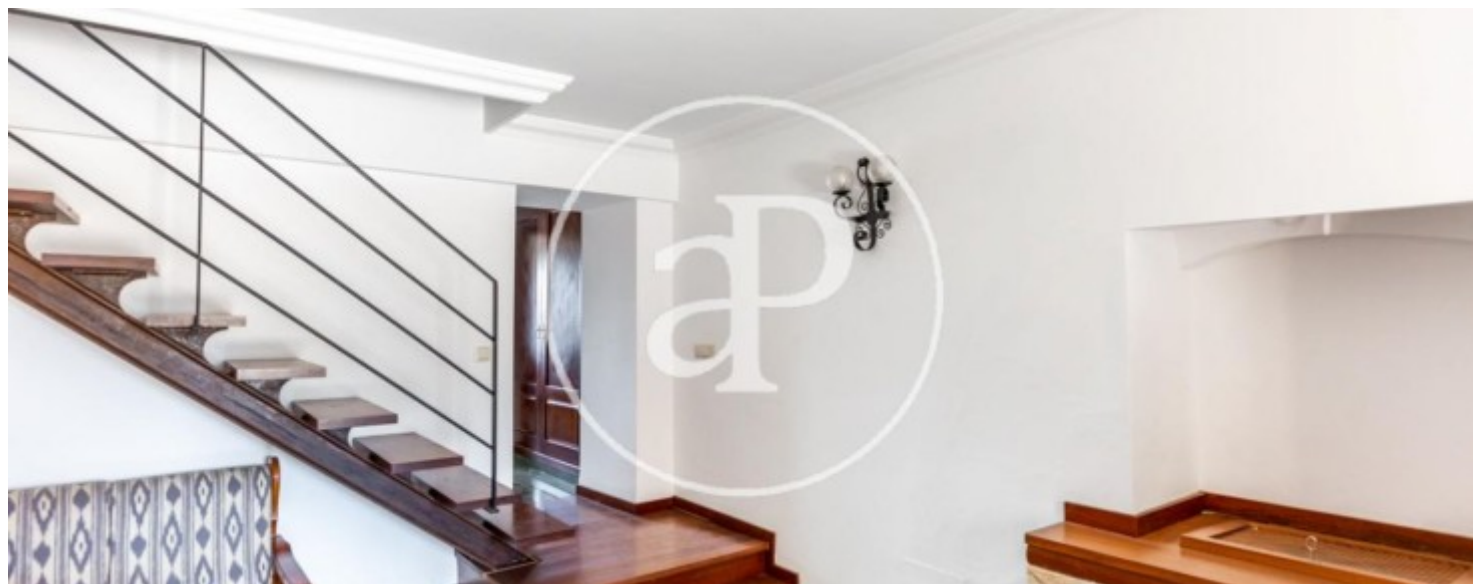
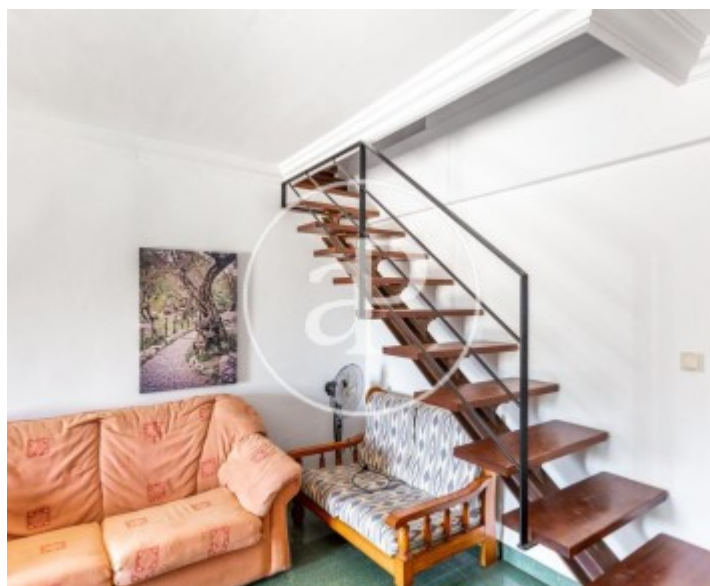
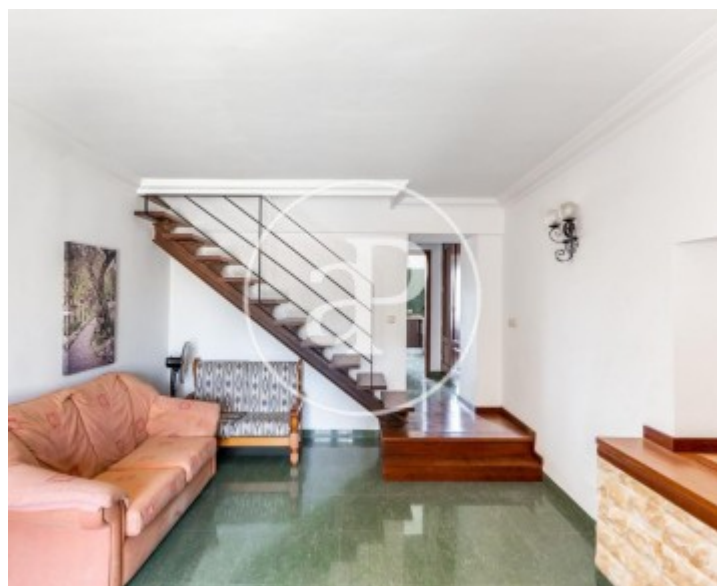
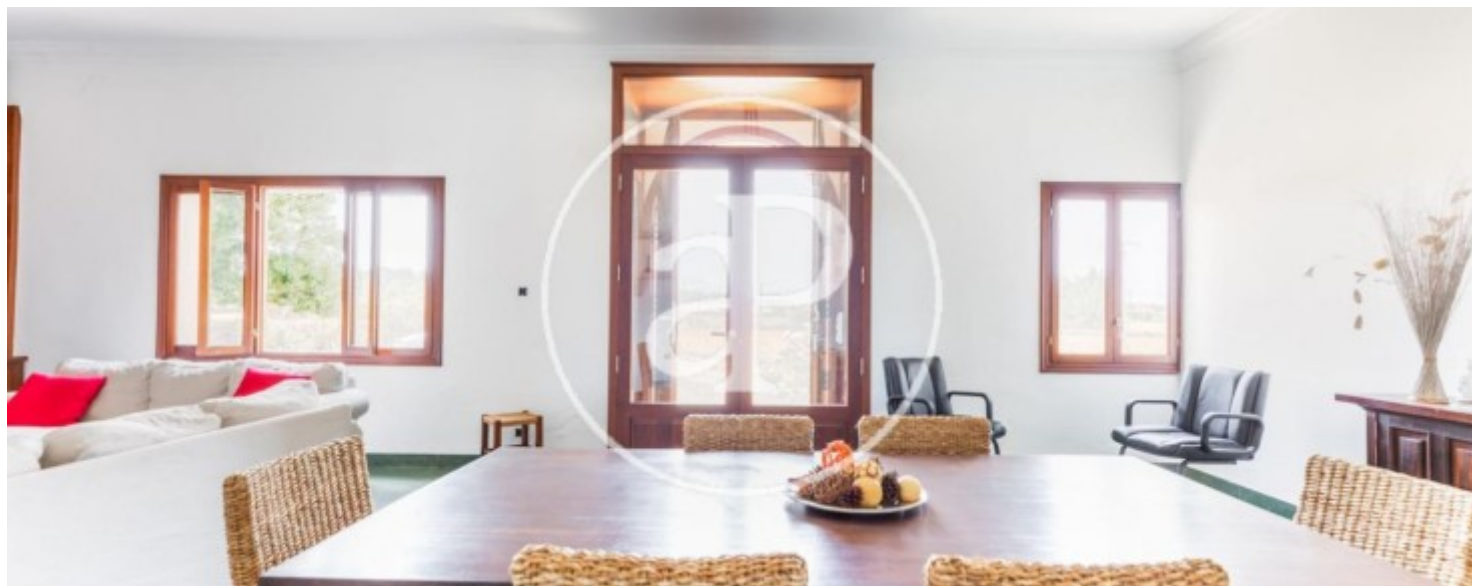
Sencelles, Binissalem

REF. VPM2208014



Sencelles, Binissalem

REF. VPM2208014



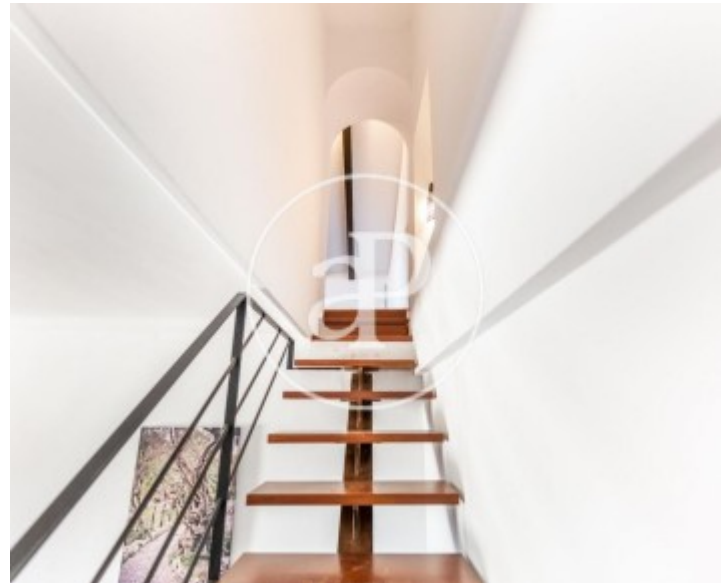


APROPERTIES
REAL ESTATE

Calle Unió 9
07001 Palma
T. 871 16 01 60
www.aproperties.es

Sencelles, Binissalem

REF. VPM2208014



The information about any property is not binding to any offer or contract. Any verbal or written declaration made by aProperties with regards to the value or condition of the property should not be considered accurate or factual. The pictures make reference to some parts of the property at the times that they were taken. The areas, dimensions and distances that are given are approximate and should be checked by the client. The images are computer generated and are just an approximate indication of the real appearance of the property; these may change at any time. The information with regards to the property may also change at any time.



For **more information** or
to make an appointment

apropertiespalma@aproperties.es
Tel: 871 16 01 60
www.aproperties.es