

Sencelles, Binissalem

REF. VPM2209033



Finca with pool for sale in Biniali - Sencelles

Features

- ✓ Views
- ✓ Heating
- ✓ Boxroom
- ✓ AACC
- ✓ Backyard
- ✓ Pool
- ✓ Security
- ✓ Has parking

Price

900,000 €

Surface

311 m²

Plot surface

3,858 m²

Bedrooms

5

Bathrooms

3



This spectacular modern finca is set amidst vineyards and nature with magnificent views of the Tramontana mountains and the idyllic village of Biniali, only 25 minutes by car from Palma and 25 minutes from the airport. The whole distribution is on one floor in a U-shape, where one side consists of three spacious bedrooms with corresponding bathrooms, dressing rooms and built-in wardrobes and the master bedroom has an en-suite bathroom. The same wing includes the large and bright fitted kitchen with storage space and pantry. In the other wing, the beautiful, large living room has a fireplace and panoramic views of the Tramontana mountains and the inner courtyard with the 10x4 m swimming pool with solarium. In addition, there is another small independent house with the possibility to install a bathroom,

which can be used as a guest house. The equipment includes terracotta floors, wooden windows with double glazing, solid doors, heating by radiators, air conditioning and a cistern with natural drinking water vein, while outside there is a small vineyard and also a vegetable garden, a covered garage for three cars and a wood oven. Can you imagine living here? We look forward to your call!

Contact us,
we will be happy to assist you,
to offer you more details and information.

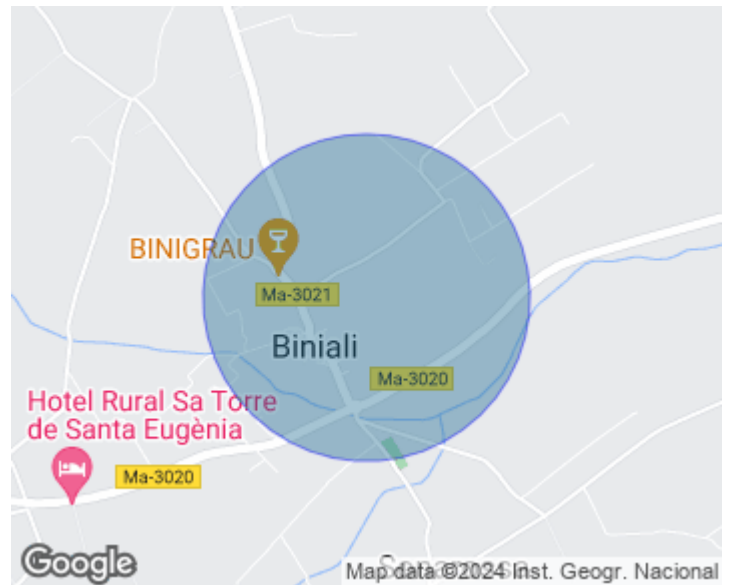


APROPERTIES
REAL ESTATE

Calle Unió 9
07001 Palma
T. 871 16 01 60
www.aproproperties.es

Sencelles, Binissalem

REF. VPM2209033



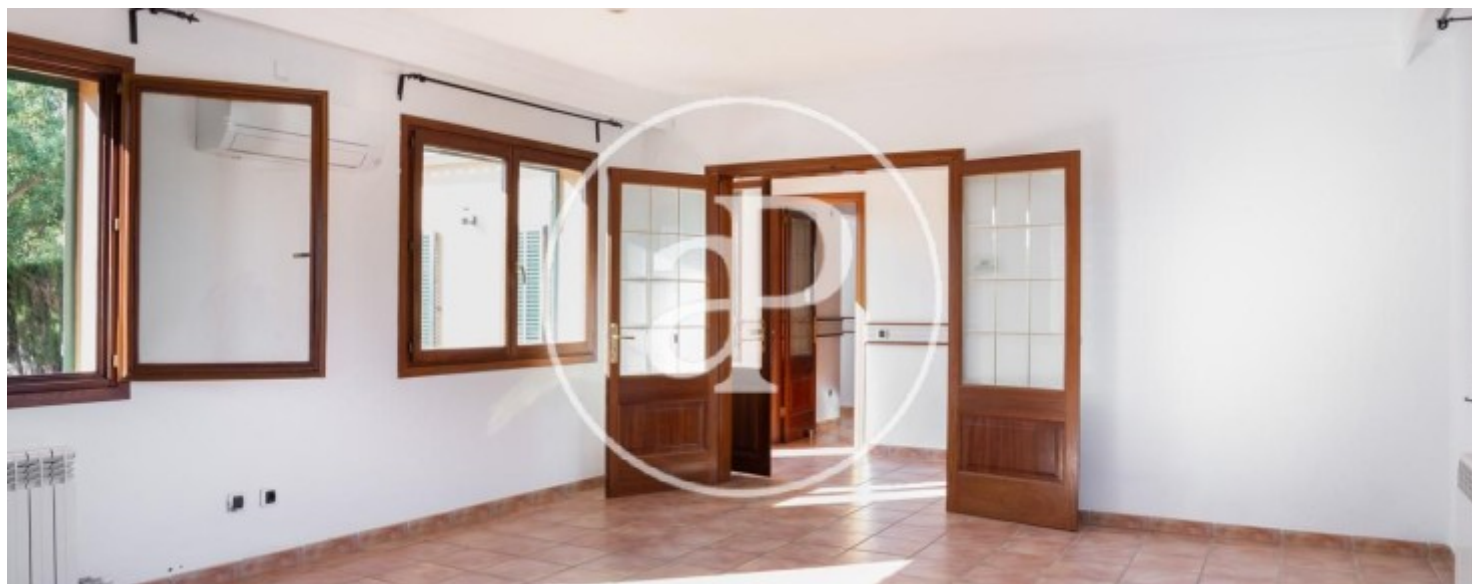
Sencelles, Binissalem

REF. VPM2209033



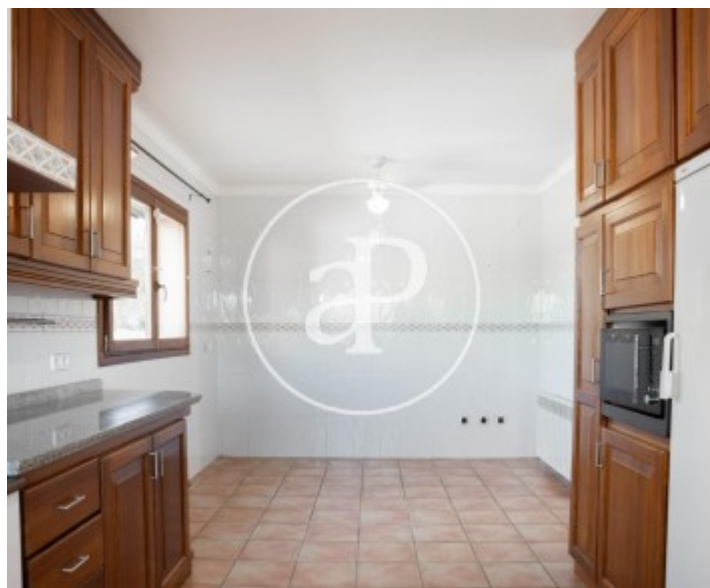
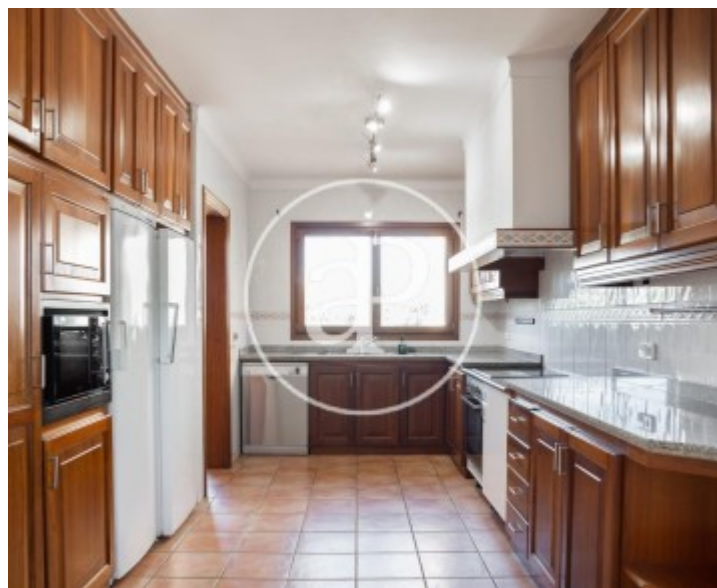
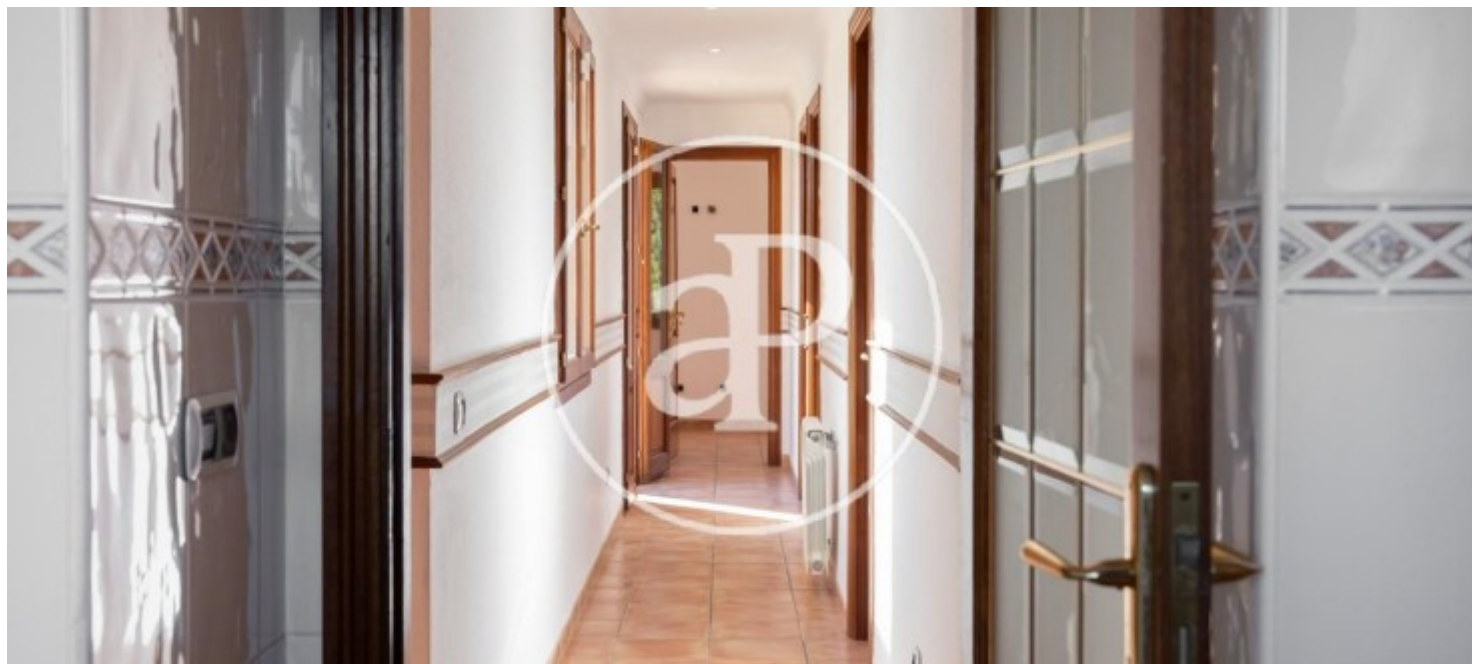
Sencelles, Binissalem

REF. VPM2209033



Sencelles, Binissalem

REF. VPM2209033



The information about any property is not binding to any offer or contract. Any verbal or written declaration made by aProperties with regards to the value or condition of the property should not be considered accurate or factual. The pictures make reference to some parts of the property at the times that they were taken. The areas, dimensions and distances that are given are approximate and should be checked by the client. The images are computer generated and are just an approximate indication of the real appearance of the property; these may change at any time. The information with regards to the property may also change at any time.



For **more information** or
to make an appointment

apropertiespalma@aproperties.es
Tel: 871 16 01 60
www.aproperties.es