



Sencelles, Binissalem

REF. VPM2410009

House for sale in Sencelles

Features

- ✓ Views
- ✓ Furnished
- ✓ AACC
- ✓ Backyard
- ✓ Has parking
- ✓ Heating
- ✓ Boxroom
- ✓ Terrace
- ✓ Pool

Price

2,500,000 €

Surface

1,170 m²

Plot surface

26,000 m²

Bedrooms

8

Bathrooms

7



In the middle of a serene rural setting and with spectacular views of the Tramuntana mountain range, lies this charming country house, just outside the picturesque village of Sencelles.

Local stone, old wood and terracotta are the predominant materials of the house, masterfully used to structure the house which is distributed over 2 floors. The lower floor consists of a living room with 2 fireplaces surrounded by large panoramic windows that communicate directly with the outside patio. The living room leads to the dining room overlooking the kitchen, laundry room and pantry. Also on the ground floor we find 3 double bedrooms and 2 full bathrooms. Going up a

staircase we reach the upper floor where we find 2 double bedrooms with en-suite bathrooms, one of them with a dressing room, a third room with a private bathroom and a terrace with a suggestive view of the mountains. To further enhance the picturesque vegetation of the property, the garden is filled with palm trees, roses, bougainvillea and olive trees. An essential element of the outdoor oasis is the saltwater pool immersed in a spectacular solarium with views. The outdoor spaces invite you to relax with its numerous open terraces and porches on different levels for social enjoyment, with...

Contact us,
we will be happy to assist you,
to offer you more details and information.

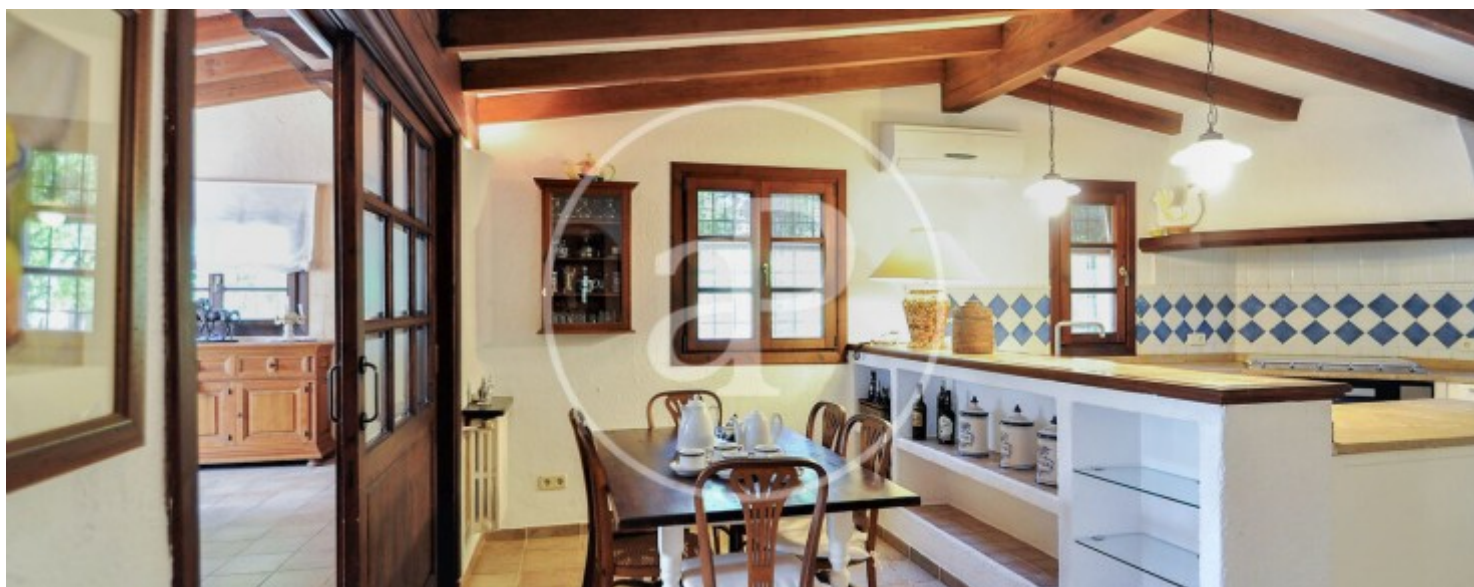
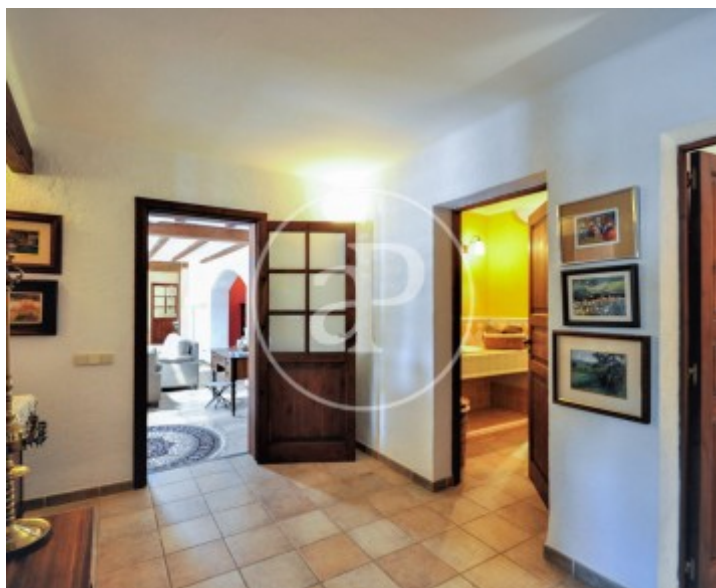
Sencelles, Binissalem

REF. VPM2410009



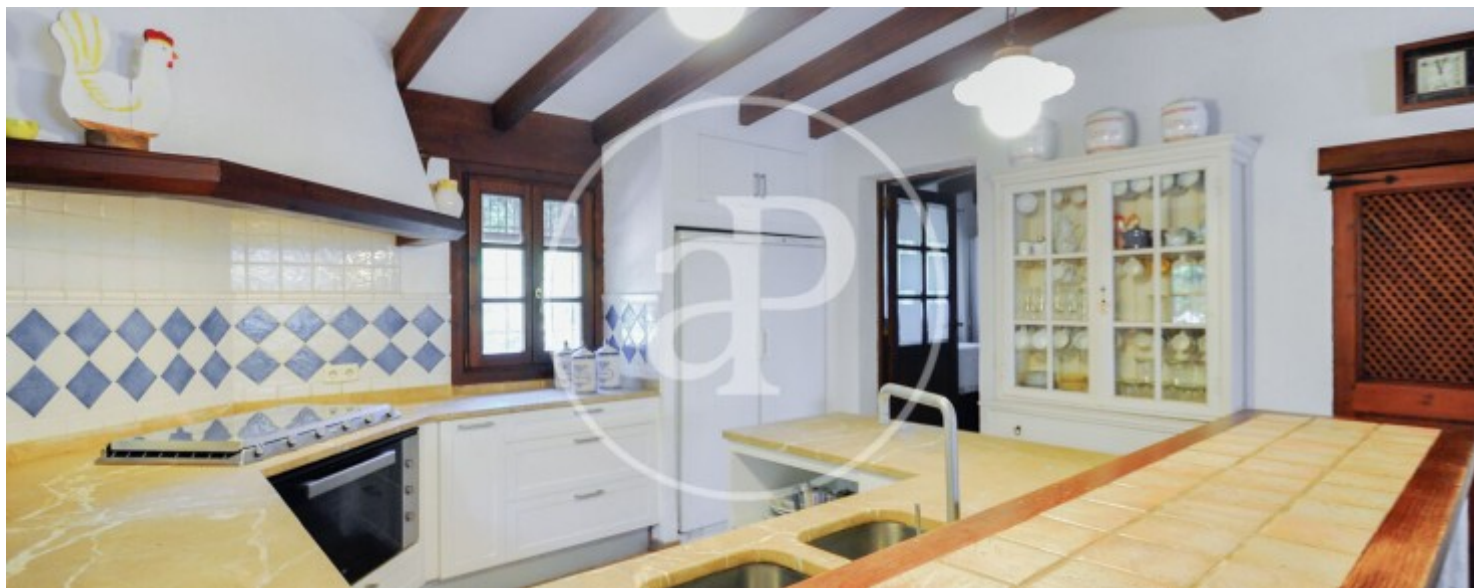
Sencelles, Binissalem

REF. VPM2410009



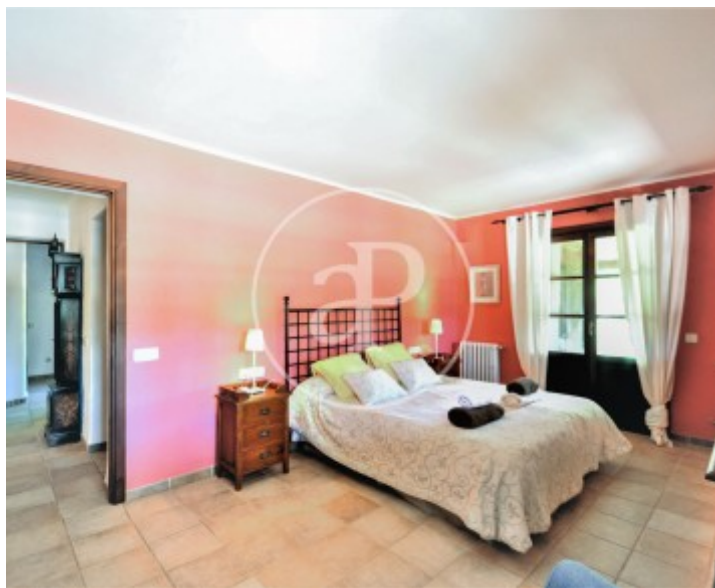
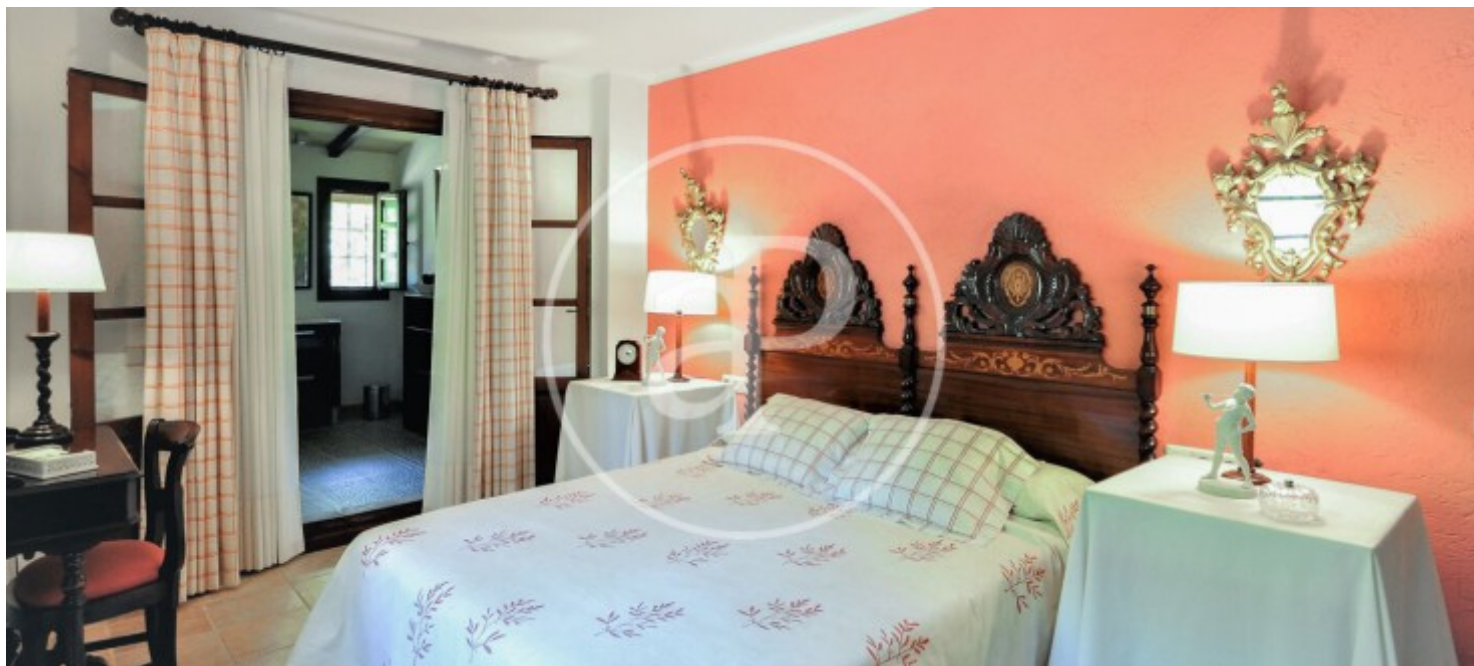
Sencelles, Binissalem

REF. VPM2410009



Sencelles, Binissalem

REF. VPM2410009



The information about any property is not binding to any offer or contract. Any verbal or written declaration made by aProperties with regards to the value or condition of the property should not be considered accurate or factual. The pictures make reference to some parts of the property at the times that they were taken. The areas, dimensions and distances that are given are approximate and should be checked by the client. The images are computer generated and are just an approximate indication of the real appearance of the property; these may change at any time. The information with regards to the property may also change at any time.

For **more information** or
to make an appointment

apropertiespalma@aproperties.es
Tel: 871 16 01 60
www.aproperties.es