

Alaró, Binissalem

REF. VPM2504024

Mallorcan house for sale in Alaró

Features

- ✓ Boxroom
- ✓ Terrace
- ✓ Backyard

Surface

640 m²

Plot surface

347 m²

Bedrooms

7

Bathrooms

3

Price

1,300,000 €



The house is distributed over three spacious floors of 150 sqm each, offering a generous space full of natural light.

From the first moment, its imposing entrance conveys nobility and authenticity, inviting you to discover an elegant living-dining room of classic and cozy style. The kitchen, independent and with adjoining utility room, connects directly to a private garden full of charm - a true oasis with enough space to create a chill-out area, vegetable garden, or even a swimming pool, ideal for enjoying the Mediterranean lifestyle outdoors. On the second floor, two large windows offer exceptional lighting and frame a direct view of the emblematic village

church, an image that conveys serenity and beauty at any time of the year. Every corner of this floor invites to rest, contemplation and connection with the environment. The third floor, meanwhile, offers panoramic views of the mountains of Alaró, with an atmosphere of absolute peace. This level presents itself as the ideal place to create master bedrooms, artistic studio or retreat spaces, all against the backdrop of Mallorcan nature. The most valuable thing about this property is its ability to offer the best of both worlds: you are in the center of town, with all...

Contact us,
we will be happy to assist you,
to offer you more details and information.

Alaró, Binissalem

REF. VPM2504024



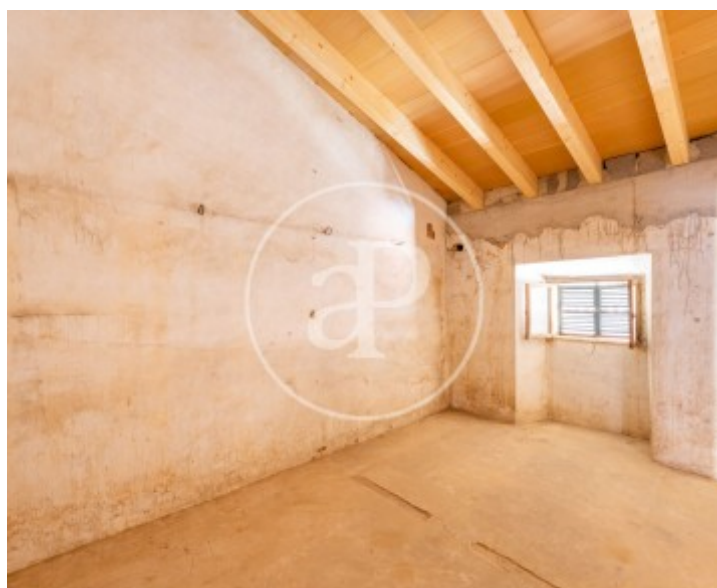
Alaró, Binissalem

REF. VPM2504024



Alaró, Binissalem

REF. VPM2504024



Alaró, Binissalem

REF. VPM2504024



The information about any property is not binding to any offer or contract. Any verbal or written declaration made by aProperties with regards to the value or condition of the property should not be considered accurate or factual. The pictures make reference to some parts of the property at the times that they were taken. The areas, dimensions and distances that are given are approximate and should be checked by the client. The images are computer generated and are just an approximate indication of the real appearance of the property; these may change at any time. The information with regards to the property may also change at any time.

For **more information** or
to make an appointment

apropertiespalma@aproperties.es
Tel: 871 16 01 60
www.aproperties.es