



Alaró, Binissalem

REF. VPM2504026

# Semi-detached house for sale in Alaró

## Features

- ✓ Views
- ✓ Heating
- ✓ Boxroom
- ✓ AACC
- ✓ Terrace
- ✓ Has parking

Surface

147 m<sup>2</sup>

Bedrooms

3

Bathrooms

3

Price

875,000 €



## A haven of calm with Mallorcan soul.

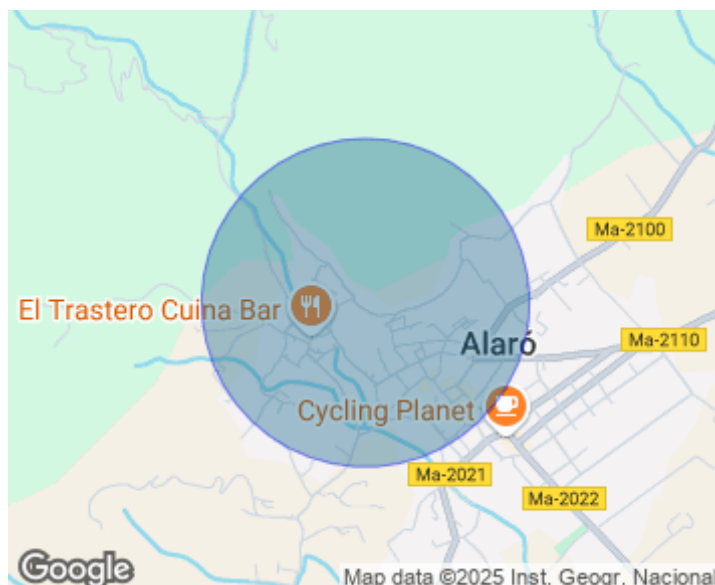
Let yourself fall in love with this beautiful semi-detached house, located in a privileged area of Alaró, just 10 minutes walk from the town center, but away from the hustle and bustle. A true haven of peace where the silence of nature and panoramic views become part of your daily life. This house, distributed on two floors plus an additional area with laundry and garage, has been designed with care and attention to detail, offering comfort, functionality and perfect harmony with the environment. Upon entering, the first floor welcomes you with a very cozy and bright living-dining room, from where the open

views to the village and the mountains of the Sierra de Tramuntana will captivate you from the first moment. The kitchen, perfectly integrated into the space, combines design and practicality, ideal for those who enjoy cooking while feeling connected to the environment. On this floor you will also find a guest toilet and direct access to a beautiful terrace, a perfect place to relax with a coffee in the morning, read a book or watch the sunset over the rooftops of Alaró. Going up to the second floor, a spectacular master bedroom en suite awaits you, with separate dressing room...

**Contact us,**  
we will be happy to assist you,  
to offer you more details and information.

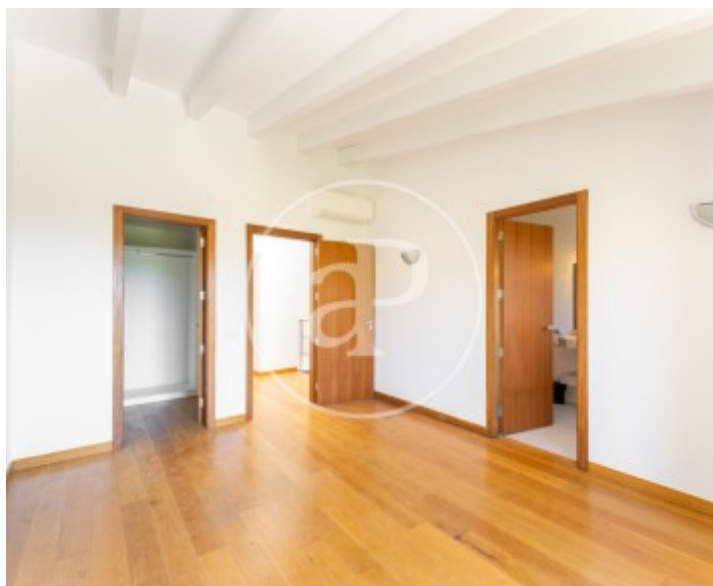
Alaró, Binissalem

REF. VPM2504026



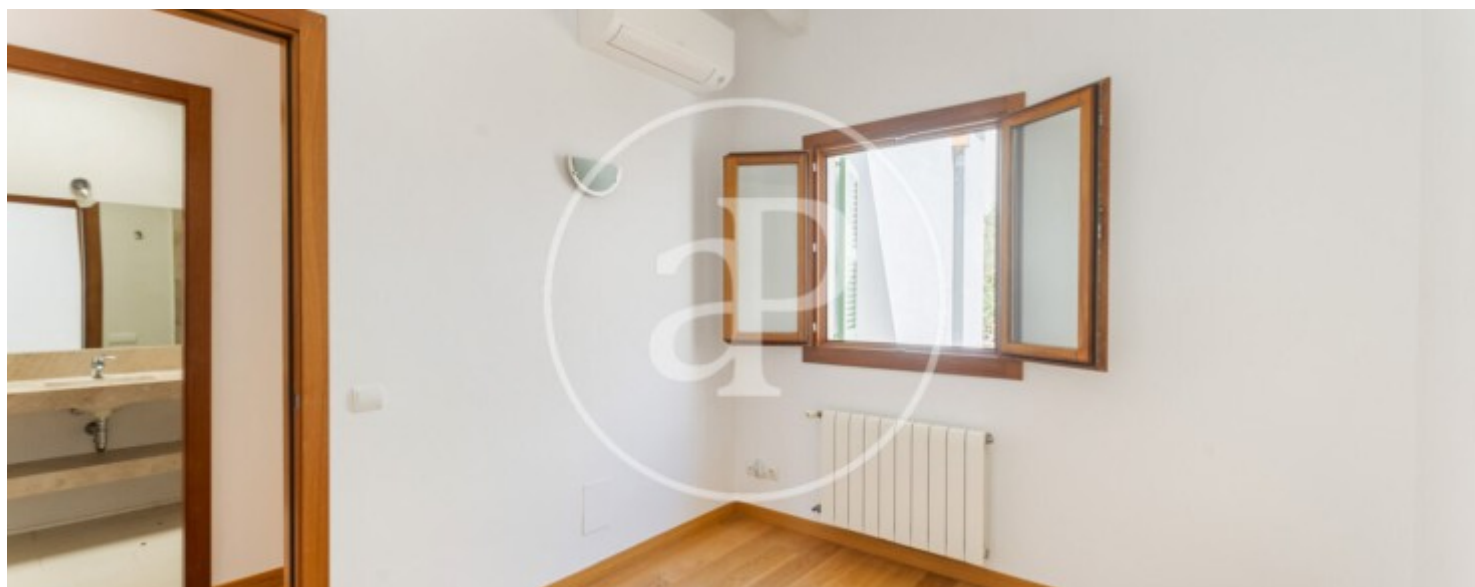
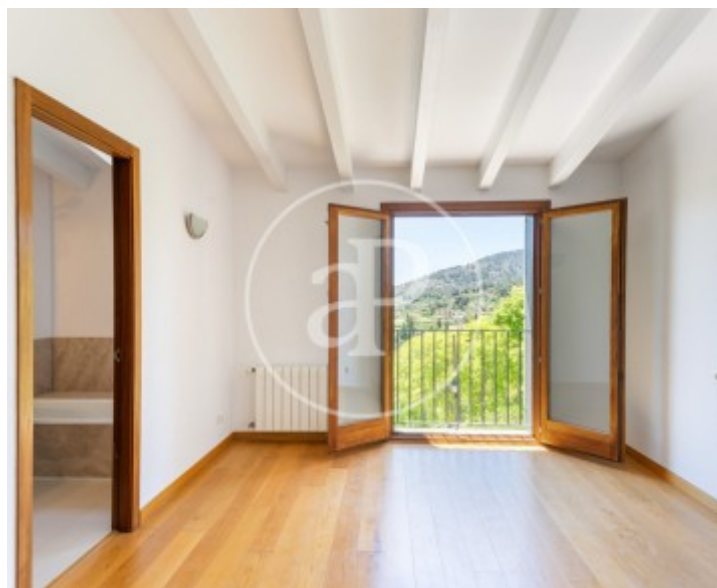
Alaró, Binissalem

REF. VPM2504026



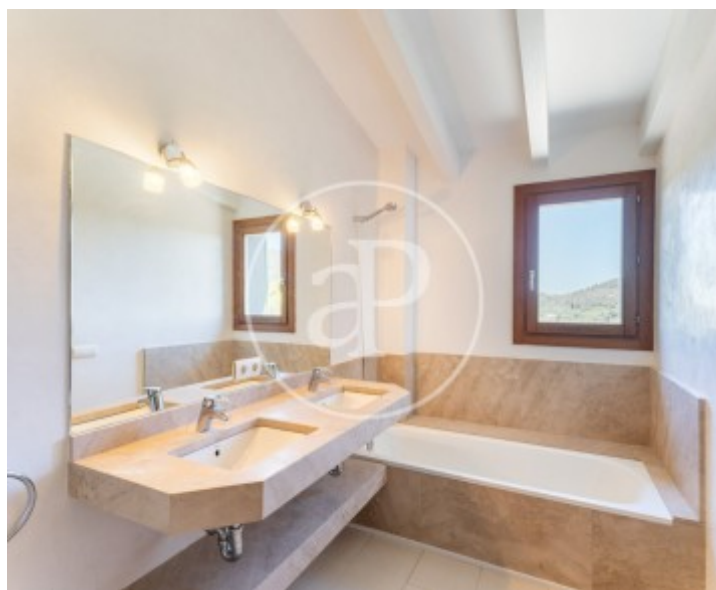
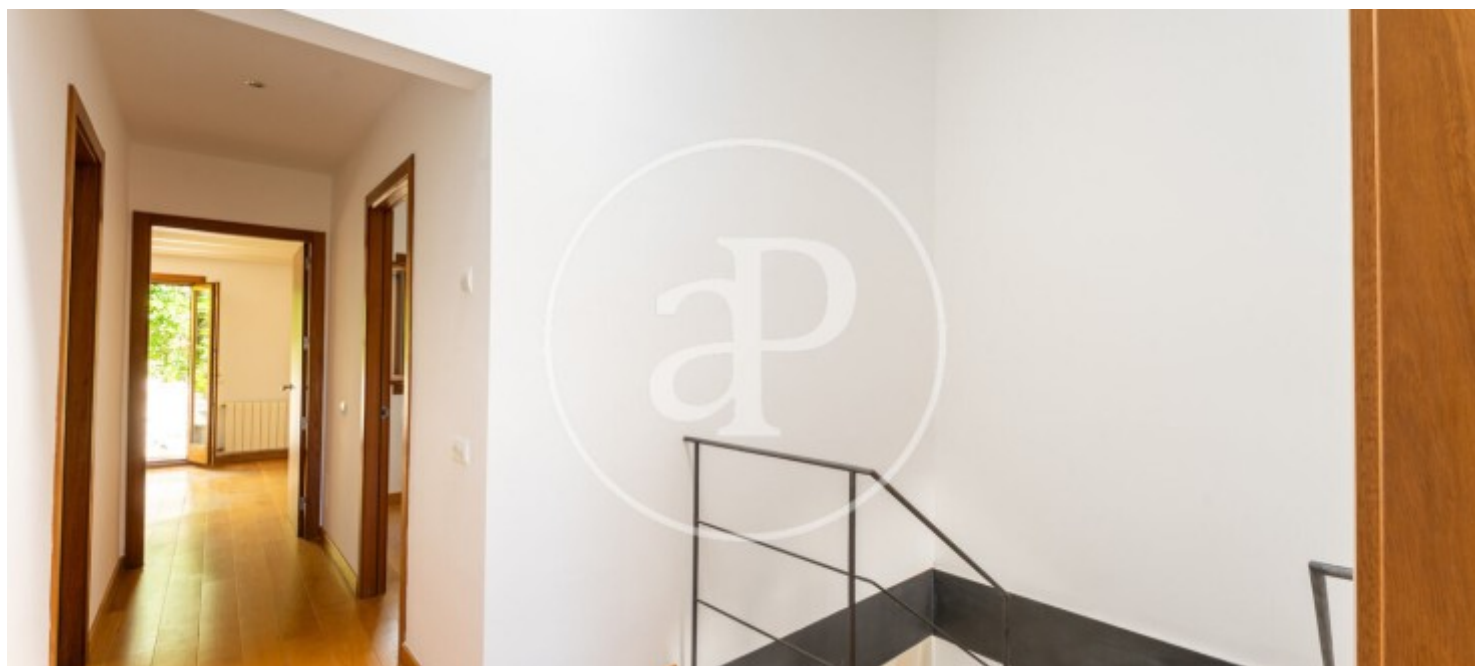
Alaró, Binissalem

REF. VPM2504026



Alaró, Binissalem

REF. VPM2504026



The information about any property is not binding to any offer or contract. Any verbal or written declaration made by aProperties with regards to the value or condition of the property should not be considered accurate or factual. The pictures make reference to some parts of the property at the times that they were taken. The areas, dimensions and distances that are given are approximate and should be checked by the client. The images are computer generated and are just an approximate indication of the real appearance of the property; these may change at any time. The information with regards to the property may also change at any time.

For **more information** or  
to make an appointment

[apropertiespalma@aproperties.es](mailto:apropertiespalma@aproperties.es)  
Tel: 871 16 01 60  
[www.aproperties.es](http://www.aproperties.es)