

Torre en Conill, Betera

REF. VV2209047



## Elegant house with terrace for rent in Torre en Conill (Betera)

### Features

- ✓ Views
- ✓ Heating
- ✓ Boxroom
- ✓ AACC
- ✓ Terrace
- ✓ Backyard
- ✓ Pool
- ✓ Gym
- ✓ Security
- ✓ Has parking

Price

**1,070,000 €**

Surface

**488 m<sup>2</sup>**

Bedrooms

**5**

Bathrooms

**4**



### Tower in Conill, luxury residential area in Bétera.

Its strategic location, with direct access to the Ademuz track, facilitates its communication with Valencia center and surroundings, so it is also close to the airport, prestigious schools, shopping centers, etc. It should be noted the increase in basic services in the vicinity of Mas Camarena, constantly attracting new families to this elegant and well-kept residential area of Bétera. This elegant property located on the perimeter of the golf course of the Torre de Conill golf club in a really quiet and familiar area, has an area of 809 square meters, of which 488 square meters are built, divided into

3 floors: In the basement we find a gym equipped with television and stereo, space for 5 cars, armed to have storage space, a storage room with shelves, and a games room with BILLIARD, FOOTBALL AND BAR BAR, which are left with the rental of the property for your enjoyment. On the first floor we can find the night area: divided into four double rooms, one of them currently as an office. We also find a full double bathroom, decorated to the smallest detail. It should be noted that on the stairs we find a wonderful and spectacular stained glass window handmade. In the wonderful exterior...

**Contact us,**  
we will be happy to assist you,  
to offer you more details and information.

Torre en Conill, Betera

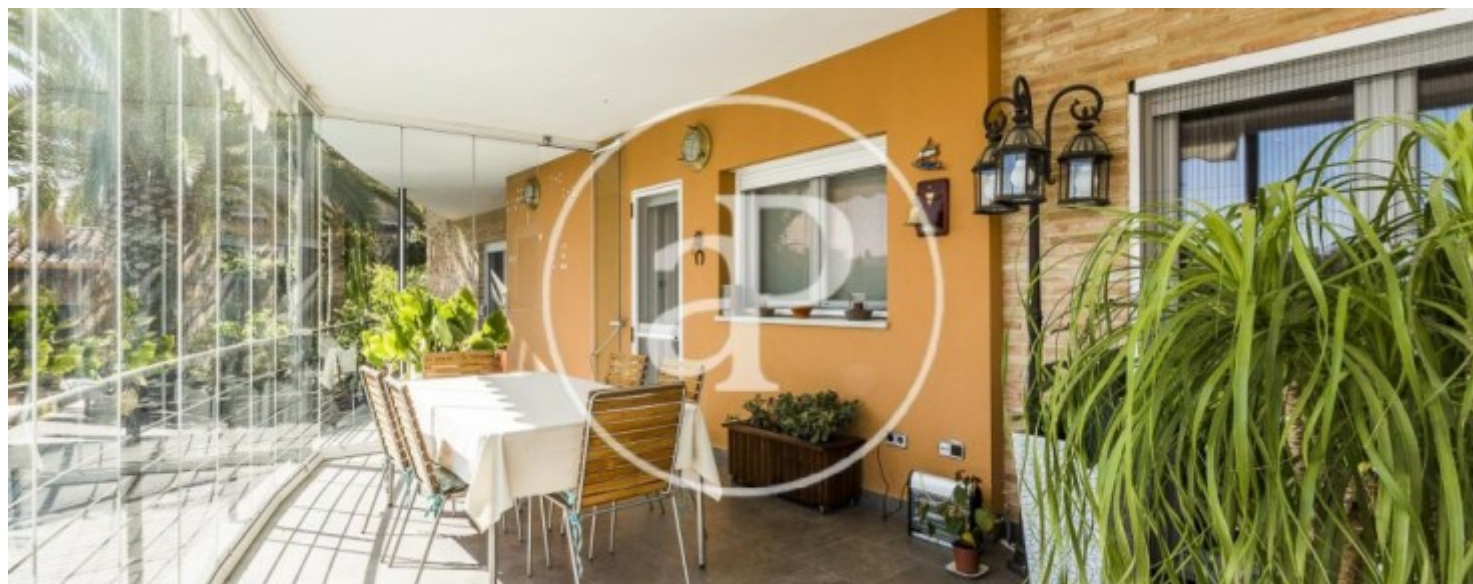
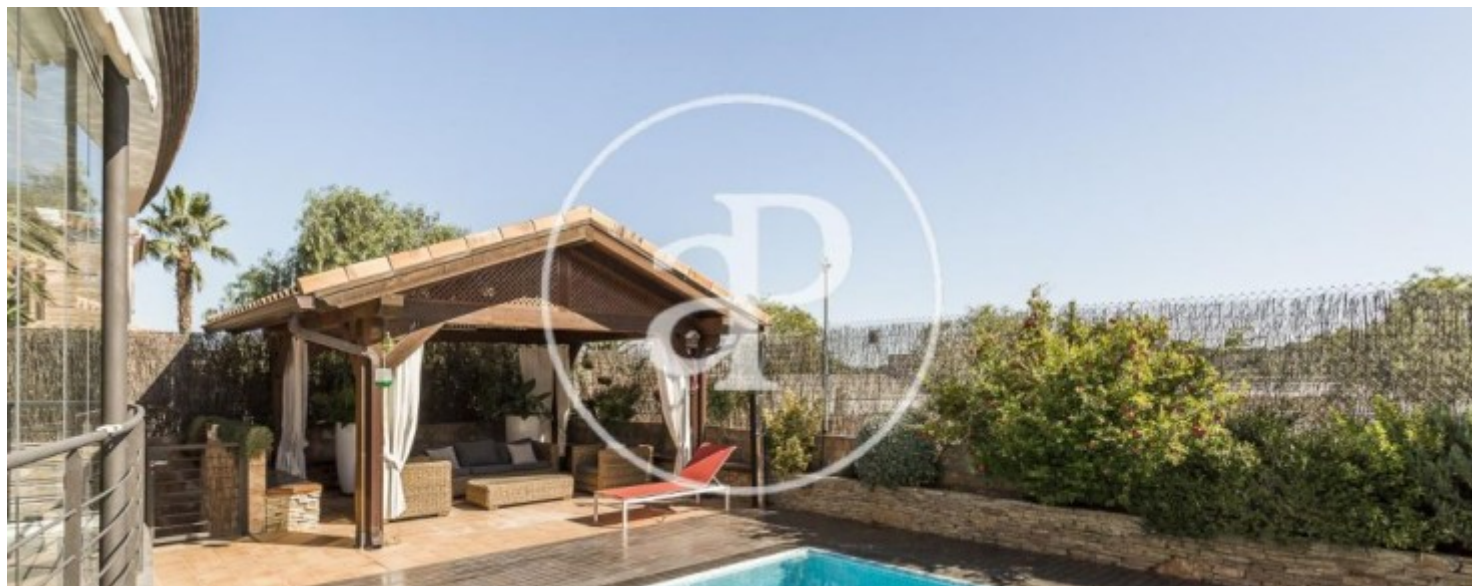
REF. VV2209047





Torre en Conill, Betera

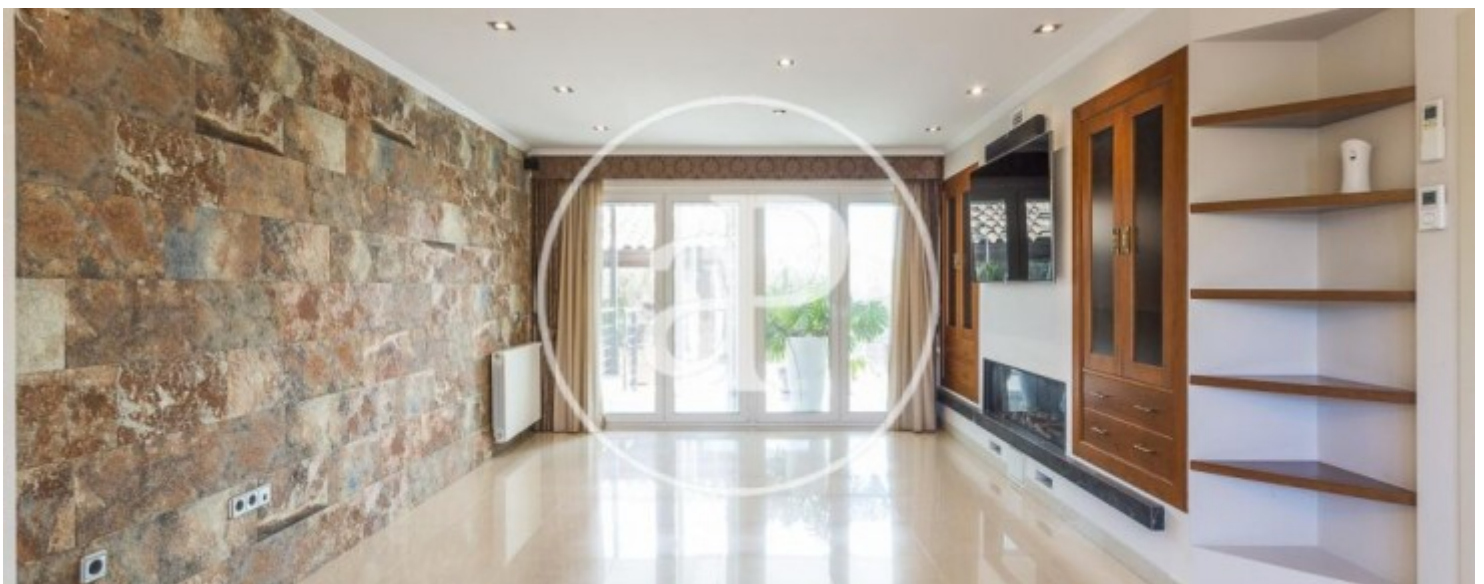
REF. VV2209047





Torre en Conill, Betera

REF. VV2209047



Torre en Conill, Betera

REF. VV2209047



The information about any property is not binding to any offer or contract. Any verbal or written declaration made by aProperties with regards to the value or condition of the property should not be considered accurate or factual. The pictures make reference to some parts of the property at the times that they were taken. The areas, dimensions and distances that are given are approximate and should be checked by the client. The images are computer generated and are just an approximate indication of the real appearance of the property; these may change at any time. The information with regards to the property may also change at any time.



For **more information** or  
to make an appointment

[apropertiesvalencia@aproperties.es](mailto:apropertiesvalencia@aproperties.es)  
Tel: 96 128 59 65  
[www.aproperties.es](http://www.aproperties.es)