



Torre en Conill, Betera

REF. AV2511073

# House for rent with Terrace in Torre en Conill (Betera)

## Features

- ✓ Views
- ✓ Heating
- ✓ Furnished
- ✓ Boxroom
- ✓ AACC
- ✓ Terrace
- ✓ Backyard
- ✓ Pool
- ✓ Gym
- ✓ Lift
- ✓ Security
- ✓ Has parking

Surface

**835 m<sup>2</sup>**

Bedrooms

**6**

Bathrooms

**7**



Price

**15,000 €**

**aProperties presents this Detached Single-Family Home located in the exclusive Torre en Conill residential area in Bétera, next to the Escorpión Golf Course.**

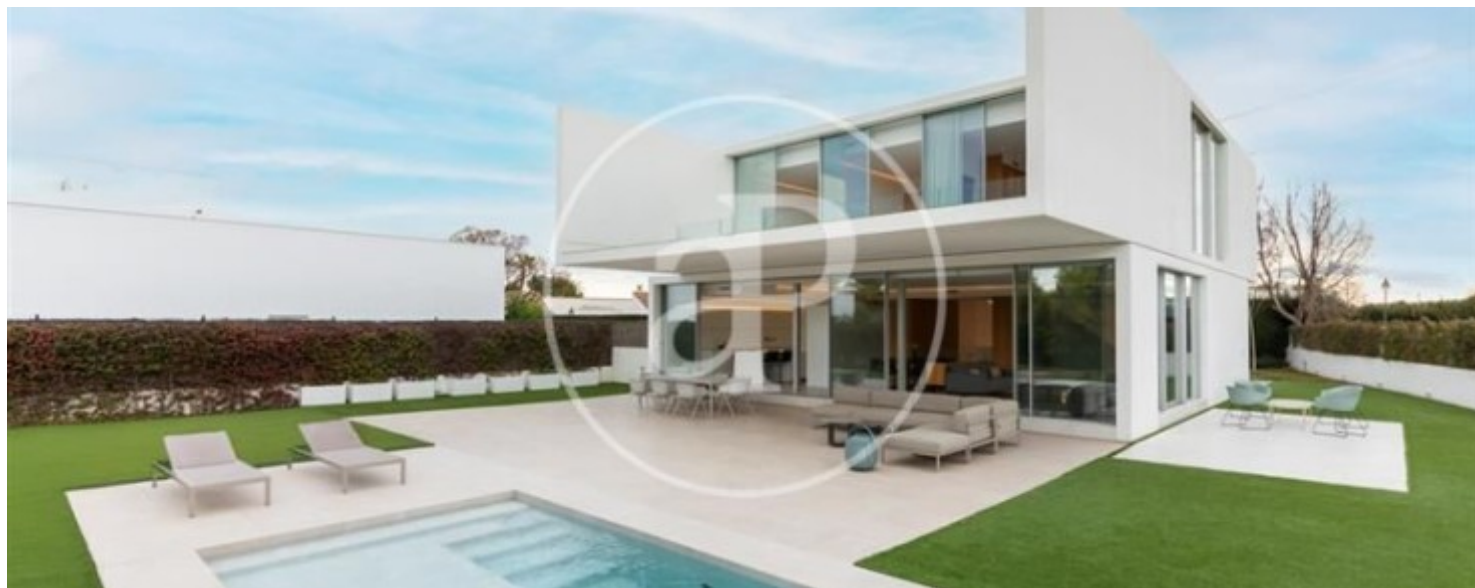
The plot, rectangular in shape and bordered by Rosinyol Street (southeast), a Green Zone (south) and the Golf Course (northwest), has a surface area of 900 m<sup>2</sup>. The property is distributed over 3 floors and has a total built area of 832 m<sup>2</sup> (1,026 m<sup>2</sup> including porches and terraces). The semi-basement level is dedicated to leisure and multipurpose rooms; the ground floor accommodates the full daytime program in a large open-plan space; and the first floor houses the nighttime

program. This is a minimalist-design home that faithfully follows the architectural principles of the modern movement, with a distinctly purist and formal character. It features highly sophisticated construction details that give the property remarkable uniqueness. In addition to the semi-basement, the two above-ground prisms that form the main volume of the house open generously to the south and east, and fully towards the Golf Course views. The ground floor is even elevated above natural grade to achieve longer and wider views. The property offers 6 bedrooms, 8 additional multipurpose...

**Contact us,**  
we will be happy to assist you,  
to offer you more details and information.

Torre en Conill, Betera

REF. AV2511073





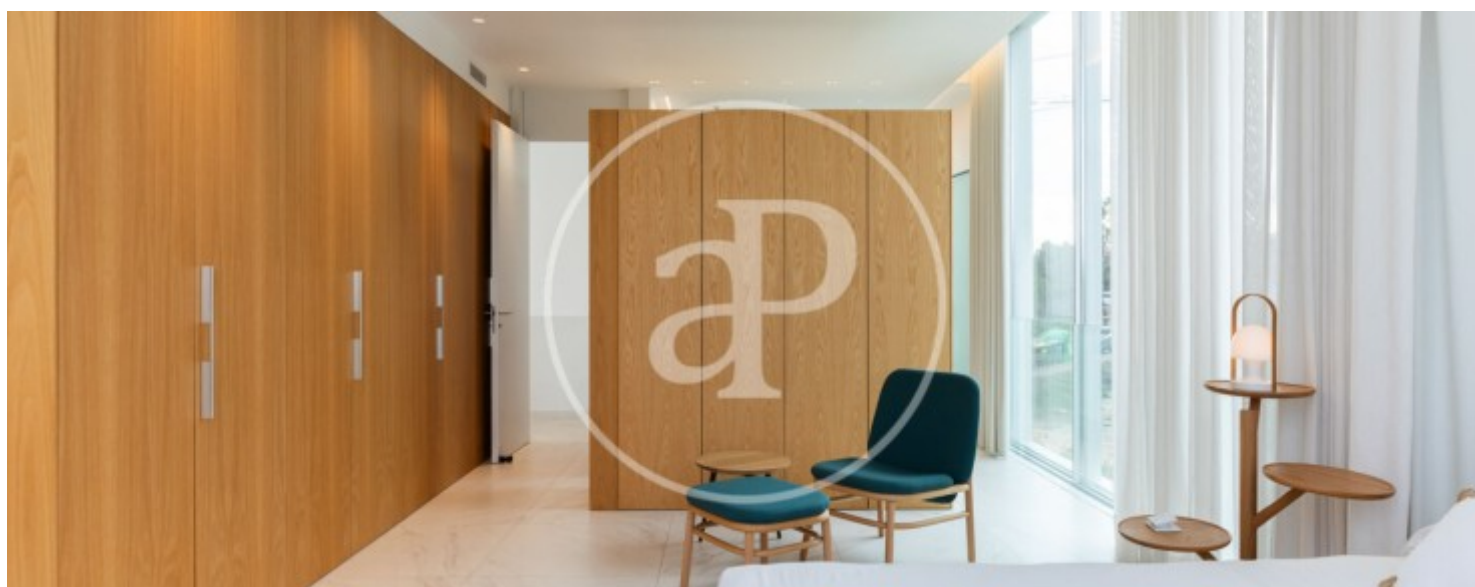
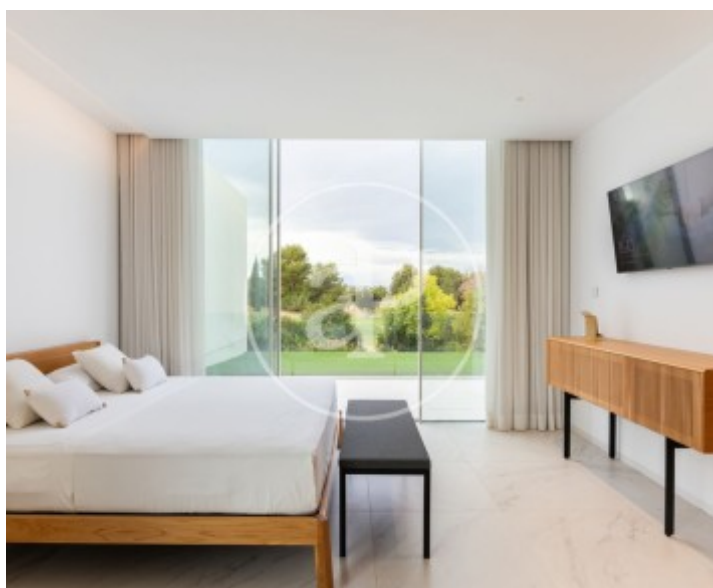
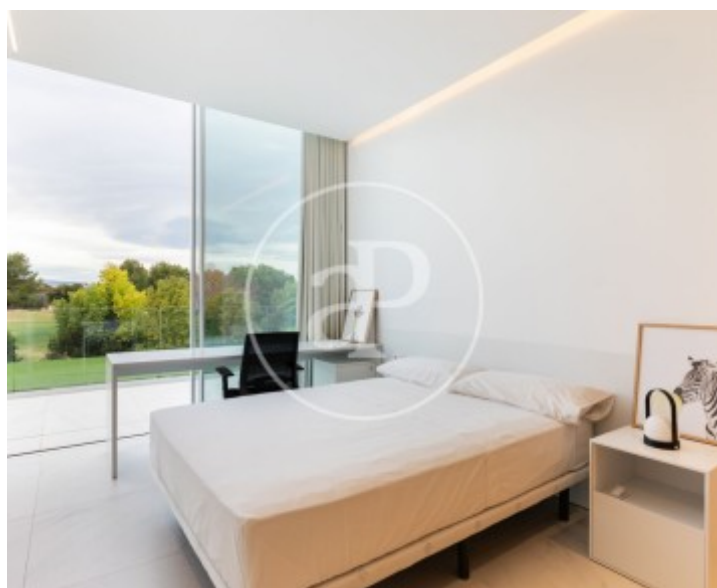
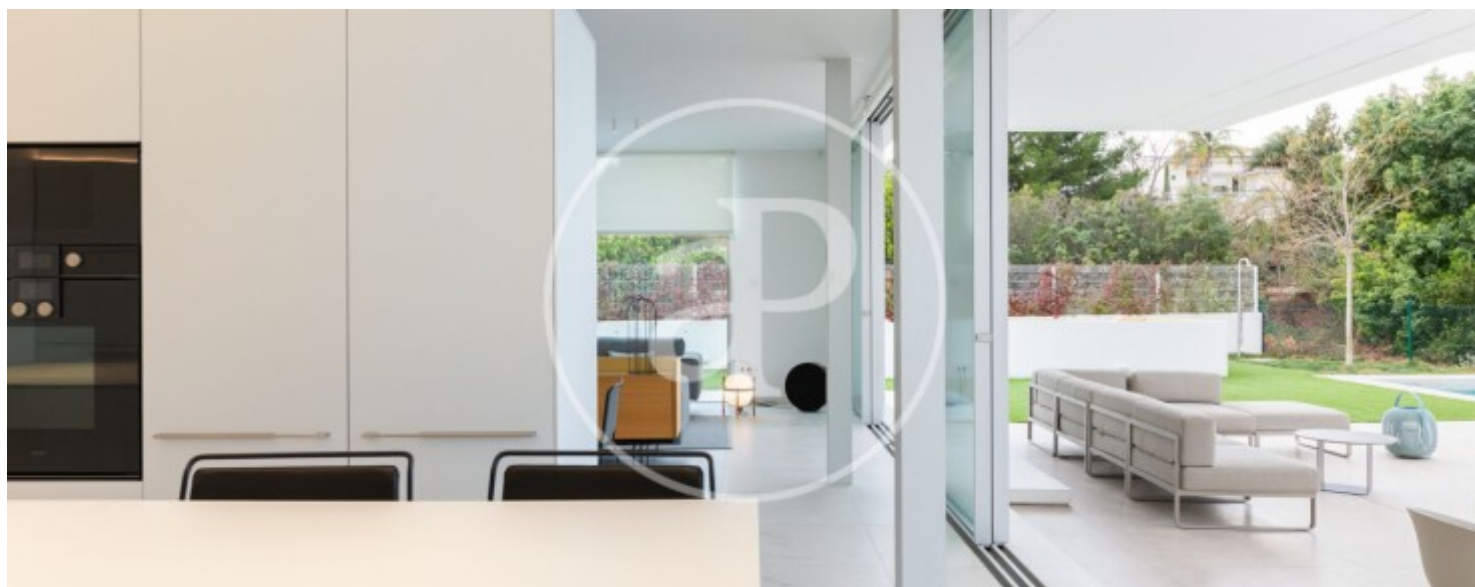
**Torre en Conill, Betera**

**REF. AV2511073**



Torre en Conill, Betera

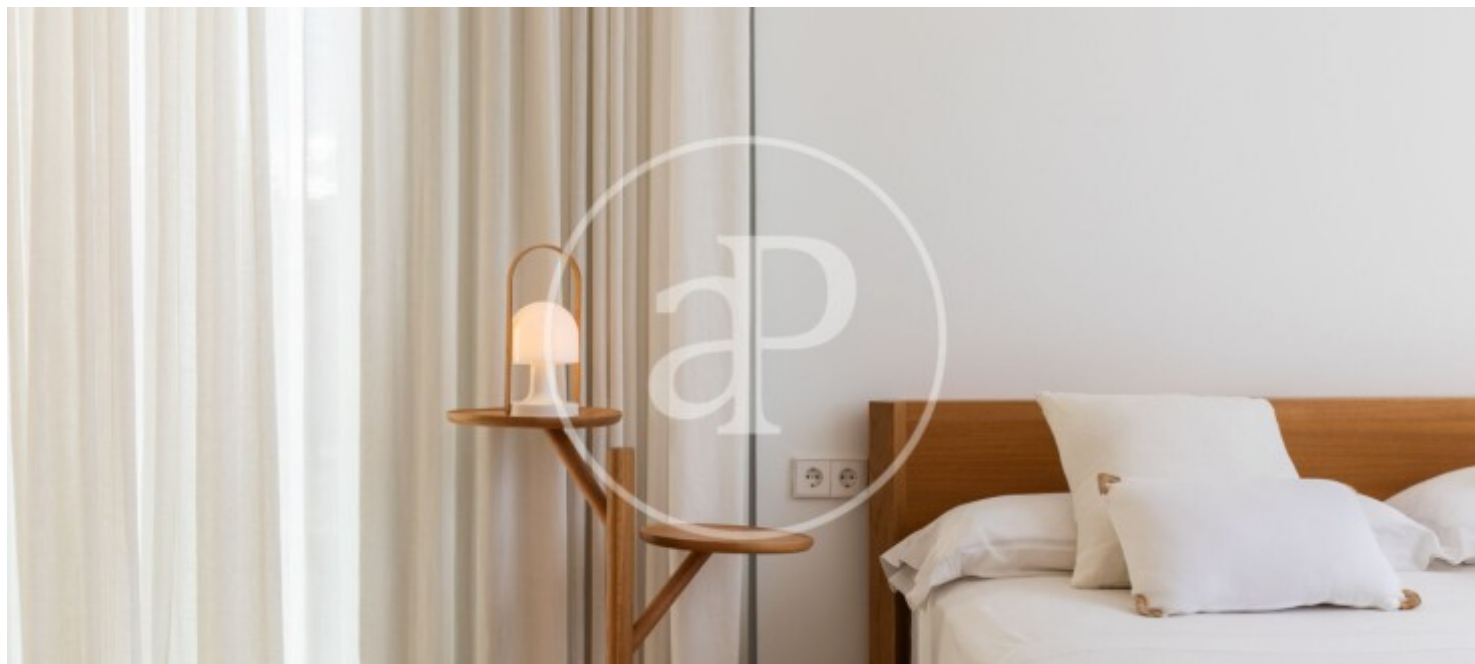
REF. AV2511073





Torre en Conill, Betera

REF. AV2511073



The information about any property is not binding to any offer or contract. Any verbal or written declaration made by aProperties with regards to the value or condition of the property should not be considered accurate or factual. The pictures make reference to some parts of the property at the times that they were taken. The areas, dimensions and distances that are given are approximate and should be checked by the client. The images are computer generated and are just an approximate indication of the real appearance of the property; these may change at any time. The information with regards to the property may also change at any time.

For **more information** or  
to make an appointment

[apropertiesvalencia@aproperties.es](mailto:apropertiesvalencia@aproperties.es)  
Tel: 96 128 59 65  
[www.aproperties.es](http://www.aproperties.es)