

Torre en Conill, Betera

REF. AV2606110

# House for rent with Terrace in Torre en Conill (Betera)

## Features

- ✓ Views
- ✓ Furnished
- ✓ Terrace
- ✓ Pool
- ✓ Lift
- ✓ Has parking
- ✓ Heating
- ✓ AACC
- ✓ Backyard
- ✓ Gym
- ✓ Security

Surface

**623 m<sup>2</sup>**

Bedrooms

**5**

Bathrooms

**4**



Price

**11,500 €**

**aProperties presents this extraordinary luxury residence in the heart of Torre en Conill, one of the most exclusive and prestigious residential communities in the Valencian Community.**

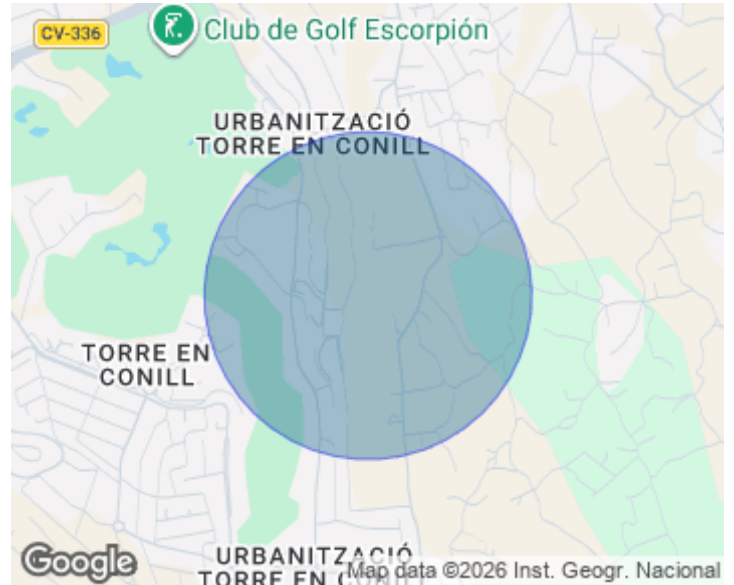
The plot enjoys a privileged location, not only due to its excellent orientation but also because it offers direct access to the golf course, providing stunning open views that make this property truly unique. The house is distributed over two floors and offers 623 m<sup>2</sup> of built area, of which 590 m<sup>2</sup> are usable living space. On the main floor, a spectacular living room features expansive floor-to-ceiling glass walls with direct access to a magnificent 70 m<sup>2</sup> terrace and the

landscaped garden. The kitchen, designed by Porcelanosa and fitted with Krion surfaces, is equipped with integrated appliances from leading brands and has been conceived with exceptional attention to detail, including a traditional oven, steam oven, warming drawer, two refrigerators, and numerous premium features designed to ensure maximum comfort. This floor also accommodates two double bedrooms with en-suite bathrooms, as well as an elegant home office. A particularly striking feature of the property is the impressive glazed central courtyard with carefully selected vegetation, which serves...

**Contact us,**  
we will be happy to assist you,  
to offer you more details and information.

Torre en Conill, Betera

REF. AV2606110



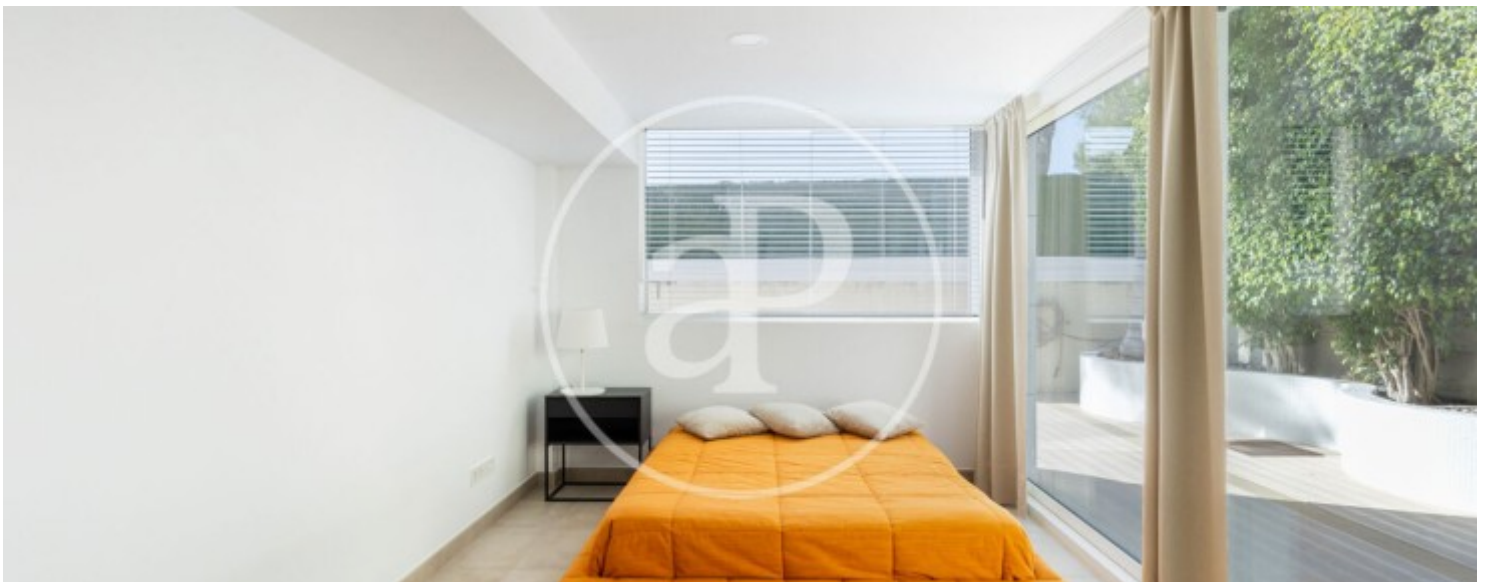
Torre en Conill, Betera

REF. AV2606110



Torre en Conill, Betera

REF. AV2606110



Torre en Conill, Betera

REF. AV2606110



The information about any property is not binding to any offer or contract. Any verbal or written declaration made by aProperties with regards to the value or condition of the property should not be considered accurate or factual. The pictures make reference to some parts of the property at the times that they were taken. The areas, dimensions and distances that are given are approximate and should be checked by the client. The images are computer generated and are just an approximate indication of the real appearance of the property; these may change at any time. The information with regards to the property may also change at any time.

For **more information** or  
to make an appointment

[apropertiesvalencia@aproperties.es](mailto:apropertiesvalencia@aproperties.es)  
Tel: 96 128 59 65  
[www.aproperties.es](http://www.aproperties.es)