



Torre en Conill, Betera

REF. AV2601023

House for rent with views in Torre en Conill (Betera)

Features

- ✓ Views
- ✓ Heating
- ✓ Furnished
- ✓ Boxroom
- ✓ AACC
- ✓ Backyard
- ✓ Pool
- ✓ Security
- ✓ Has parking

Surface

465 m²

Bedrooms

4

Bathrooms

4

Price

6,500 €



aProperties presents this spectacular property located in one of the most exclusive residential areas of the Valencian Community: Torre en Conill.

The home features clean lines and large glass surfaces, with a Mediterranean architectural style. It offers 465 sqm of built area on a 1,327 sqm plot, perfectly oriented and with direct access to the golf course. The property is distributed over three levels: basement, ground floor, and first floor. All three are organized around a very special interior courtyard, where a magnolia tree has found its natural habitat, giving the property a unique personality and allowing views of it from different areas of the house. On the

ground floor, most of the walls are made of glass. Large floor-to-ceiling sliding doors allow the interior and the garden to merge seamlessly during the warmer months, creating a perfect connection between indoor and outdoor living. Upon entering, you are welcomed by a glass-enclosed entrance hall with a striking iron staircase crafted from a single piece. This entire level enjoys abundant natural light and a warm, inviting atmosphere. It features a spacious living room with a fireplace and views, a dining area with a large table ideal for sharing special moments with family or guests, and...

Contact us,
we will be happy to assist you,
to offer you more details and information.

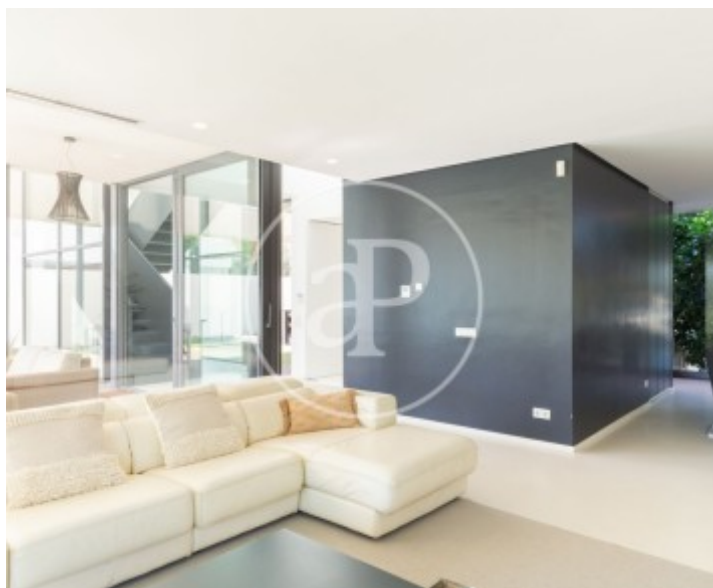
Torre en Conill, Betera

REF. AV2601023



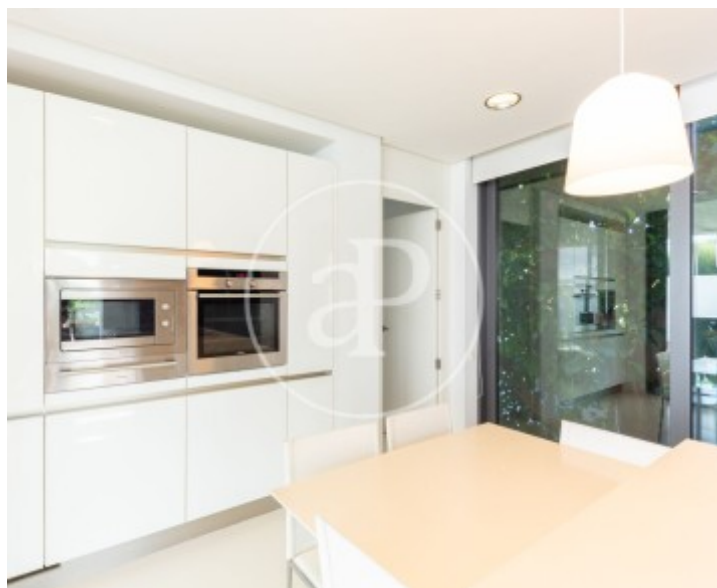
Torre en Conill, Betera

REF. AV2601023



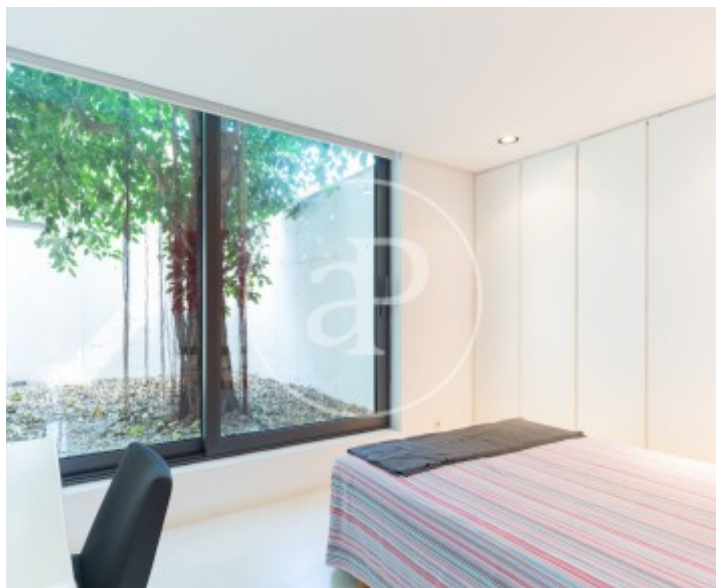
Torre en Conill, Betera

REF. AV2601023



Torre en Conill, Betera

REF. AV2601023



The information about any property is not binding to any offer or contract. Any verbal or written declaration made by aProperties with regards to the value or condition of the property should not be considered accurate or factual. The pictures make reference to some parts of the property at the times that they were taken. The areas, dimensions and distances that are given are approximate and should be checked by the client. The images are computer generated and are just an approximate indication of the real appearance of the property; these may change at any time. The information with regards to the property may also change at any time.

For **more information** or
to make an appointment

apropertiesvalencia@aproperties.es
Tel: 96 128 59 65
www.aproperties.es