

Torre en Conill, Betera

REF. VV2412013

House for sale with Terrace in Torre en Conill (Betera)

Features

- ✓ Views
- ✓ Boxroom
- ✓ Terrace
- ✓ Pool
- ✓ Has parking
- ✓ Heating
- ✓ AACC
- ✓ Backyard
- ✓ Security

Surface

291 m²

Bedrooms

4

Bathrooms

3



Price

849,000 €

aProperties is pleased to present this magnificent home located in Torre en Conill, one of the most exclusive and sought-after residential areas in the Valencian Community, ideal for year-round living.

With a built area of 291 m² on a plot of 838 m², the property is located on a very quiet street and enjoys excellent orientation. The home is mainly distributed on a single floor, with an additional versatile area of 35 m² on the upper floor, which includes a terrace. Upon entering, you are welcomed by a spacious and bright living room with high vaulted ceilings and large windows that open onto two charming porches. On the same floor, there is a guest

toilet and a spacious kitchen with an office area and direct access to the exterior. The sleeping area is well separated and includes four bedrooms: three with built-in wardrobes sharing a full bathroom, and a master suite with a walk-in closet and private bathroom. The upper floor, accessed by an elegant staircase, offers an open space perfect for an office, reading nook or relaxation area, with access to a lovely terrace and abundant natural light. The house is in perfect condition and move-in ready, equipped with natural gas heating, air conditioning, and all modern comforts. The garden...

Contact us,

we will be happy to assist you,
to offer you more details and information.

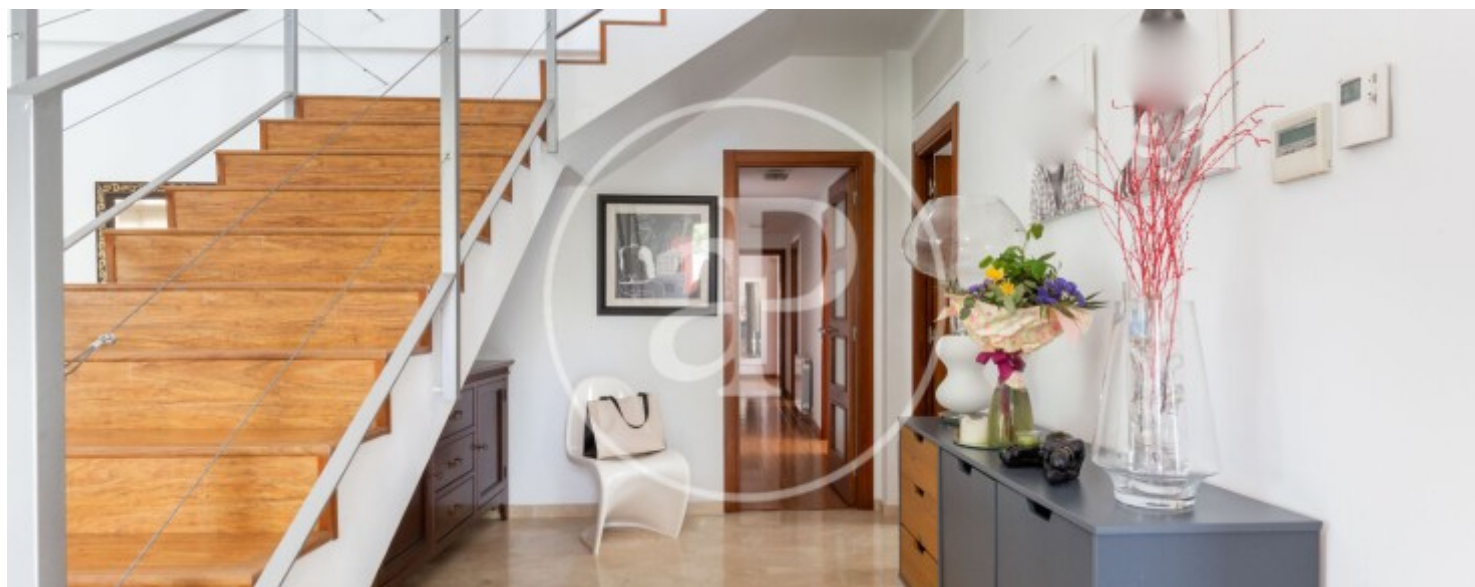
Torre en Conill, Betera

REF. VV2412013



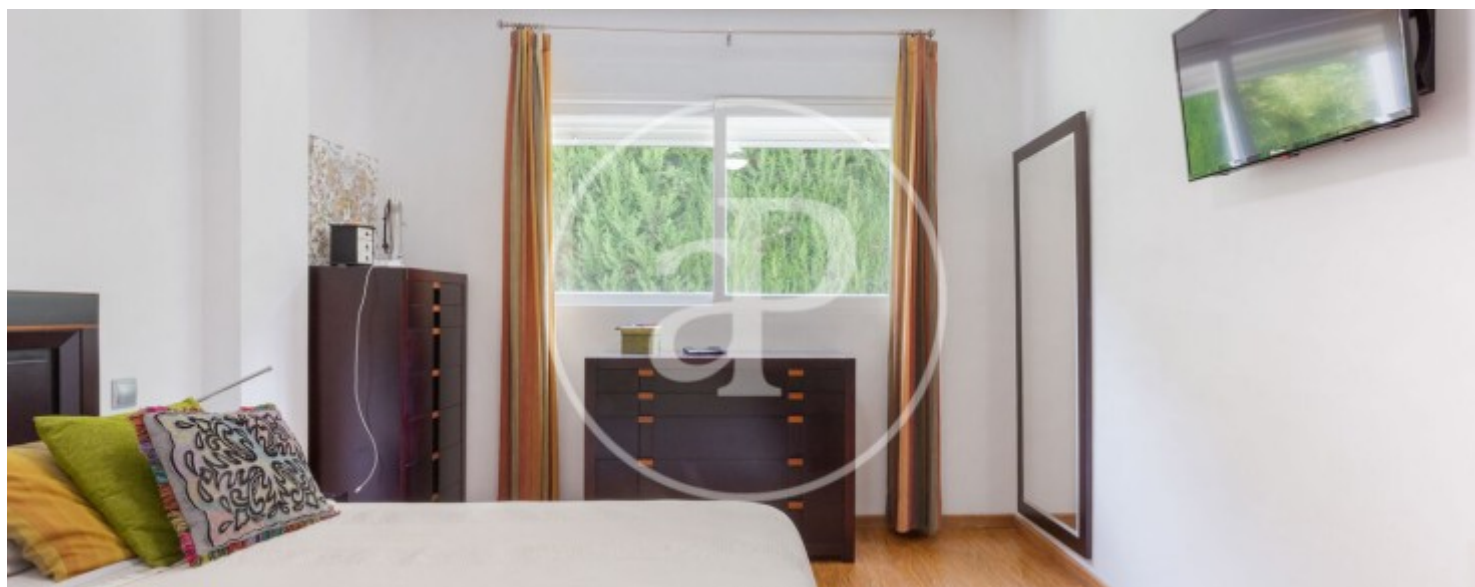
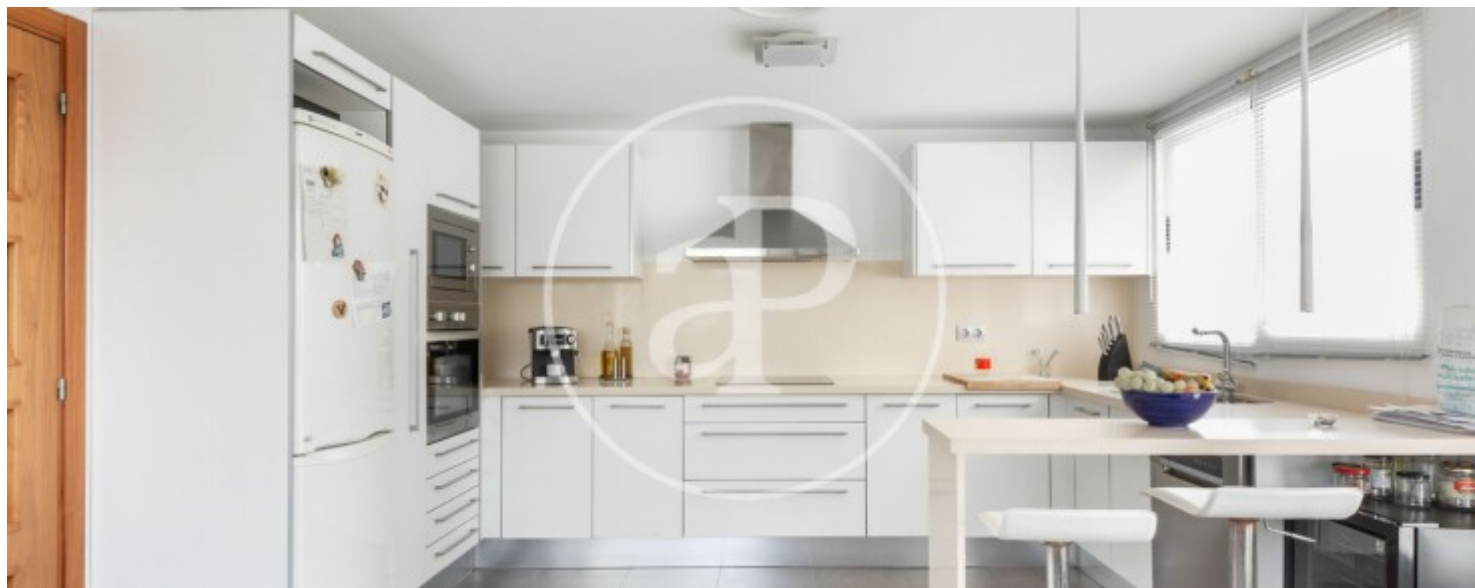
Torre en Conill, Betera

REF. VV2412013



Torre en Conill, Betera

REF. VV2412013



Torre en Conill, Betera

REF. VV2412013



The information about any property is not binding to any offer or contract. Any verbal or written declaration made by aProperties with regards to the value or condition of the property should not be considered accurate or factual. The pictures make reference to some parts of the property at the times that they were taken. The areas, dimensions and distances that are given are approximate and should be checked by the client. The images are computer generated and are just an approximate indication of the real appearance of the property; these may change at any time. The information with regards to the property may also change at any time.

For **more information** or
to make an appointment

apropertiesvalencia@aproperties.es
Tel: 96 128 59 65
www.aproperties.es