



Torre en Conill, Betera

REF. AV2512029

Penthouse for rent with Terrace in Torre en Conill (Betera)

Features

- ✓ Views
- ✓ Furnished
- ✓ Terrace
- ✓ Pool
- ✓ Has parking
- ✓ Heating
- ✓ AACC
- ✓ Backyard
- ✓ Lift

Surface

175 m²

Bedrooms

4

Bathrooms

2



Price

2,750 €

aProperties is proud to present a spectacular penthouse in Torre Conill, a luxurious residential gem offering an unparalleled living experience.

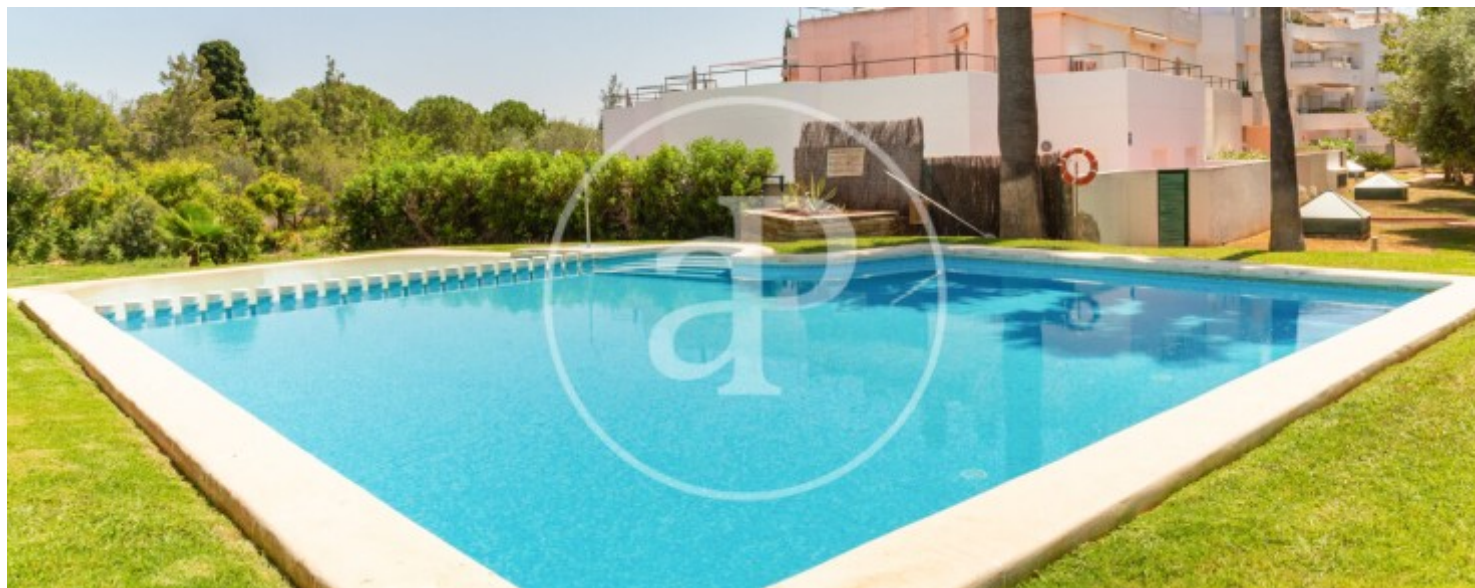
This impressive penthouse features 175 square meters of living space and a generous 120-square-meter terrace with panoramic views of the golf course. The living area measures 175 square meters and includes a 120-square-meter terrace with stunning views of the golf course, as well as two communal swimming pools to enjoy with the family in an exclusive environment surrounded by greenery. Inside, you will find a spacious living-dining room that opens directly onto the terrace, providing a sense of openness and connection with

the outdoors. Both the living room and the terrace offer beautiful views of the golf course. The kitchen is large and fully equipped with modern appliances, along with a laundry area and pantry for added convenience. The master bedroom is an elegant suite with direct access to the main terrace, equipped with built-in wardrobes and a full bathroom. Additionally, there are three single bedrooms that share a full bathroom, ideal for family members or guests. The penthouse includes two parking spaces, offering maximum comfort and security for your vehicles. The residential complex is surrounded...

Contact us,
we will be happy to assist you,
to offer you more details and information.

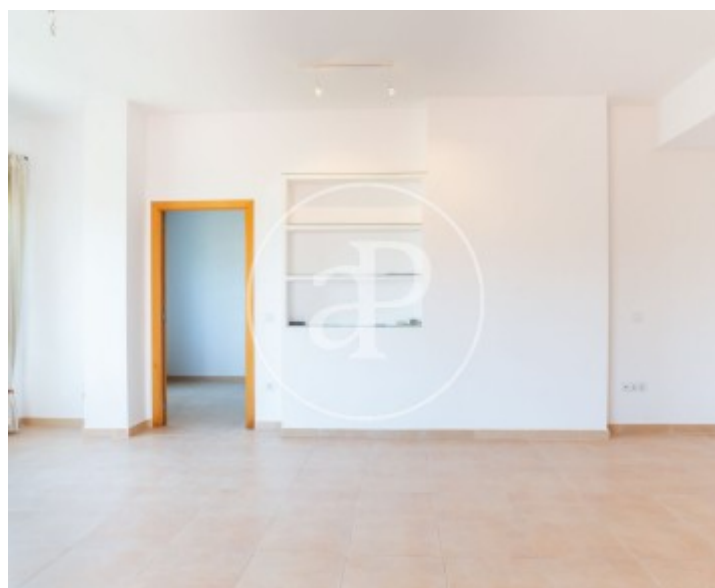
Torre en Conill, Betera

REF. AV2512029



Torre en Conill, Betera

REF. AV2512029



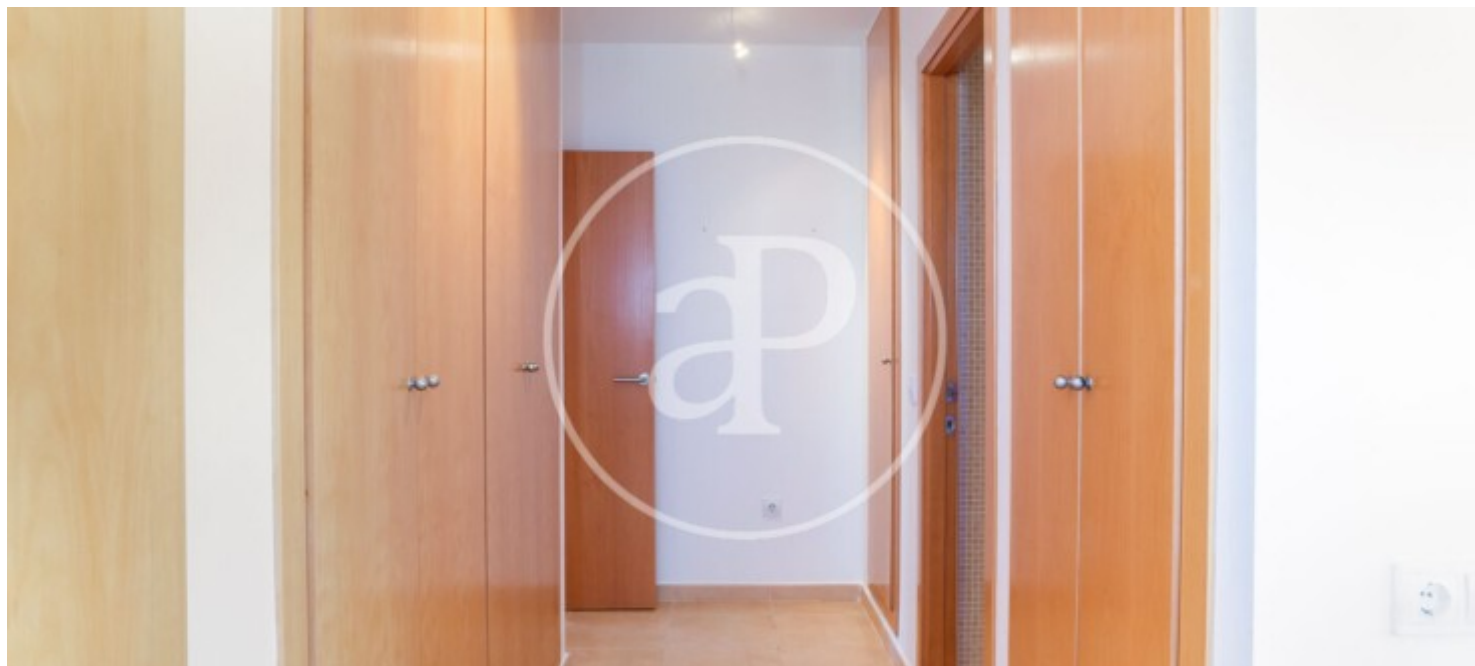
Torre en Conill, Betera

REF. AV2512029



Torre en Conill, Betera

REF. AV2512029



The information about any property is not binding to any offer or contract. Any verbal or written declaration made by aProperties with regards to the value or condition of the property should not be considered accurate or factual. The pictures make reference to some parts of the property at the times that they were taken. The areas, dimensions and distances that are given are approximate and should be checked by the client. The images are computer generated and are just an approximate indication of the real appearance of the property; these may change at any time. The information with regards to the property may also change at any time.

For **more information** or
to make an appointment

apropertiesvalencia@aproperties.es
Tel: 96 128 59 65
www.aproperties.es