

Vallvidrera, Barcelona

REF. VSC2504012

# House for Sale Near Tibidabo

## Features

- ✓ Views
- ✓ Boxroom
- ✓ Terrace
- ✓ Has parking
- ✓ Heating
- ✓ AACC
- ✓ Backyard

Surface

**429 m<sup>2</sup>**

Bedrooms

**6**

Bathrooms

**4**

Price

**1,200,000 €**



**At aProperties, we present this exclusive detached house located in a high-end residential area, nestled in a unique natural setting with breathtaking views of the sea, the city, and the mountains.**

Ideal for those seeking peace, privacy, and connection with nature—without giving up excellent access to the center of Barcelona. **PROPERTY DETAILS** 1,429 m<sup>2</sup> plot in an elevated area 429 m<sup>2</sup> built area, spread over 3 levels with a design adapted to the slope 6 bedrooms (1 master suite with fireplace, walk-in closet, and private terrace) 4 full bathrooms Spacious living-dining room with fireplace and large windows 2 multipurpose rooms (play area, gym,

office, etc.) Staff quarters Independent kitchen with access to green area Garden surrounded by lush vegetation Enclosed garage for 4 cars with direct access to the house **HIGHLIGHTED ADVANTAGES** Sea and city views from all floors Very bright throughout the day thanks to its orientation Great potential for renovation and layout customization Total privacy in one of the most peaceful areas of the city **PREMIUM LOCATION** Very close to Montiba School Upper area of Barcelona – exclusive, natural, and quiet surroundings Just minutes from the city center Well connected: bus stop for...

**Contact us,**  
we will be happy to assist you,  
to offer you more details and information.

Vallvidrera, Barcelona

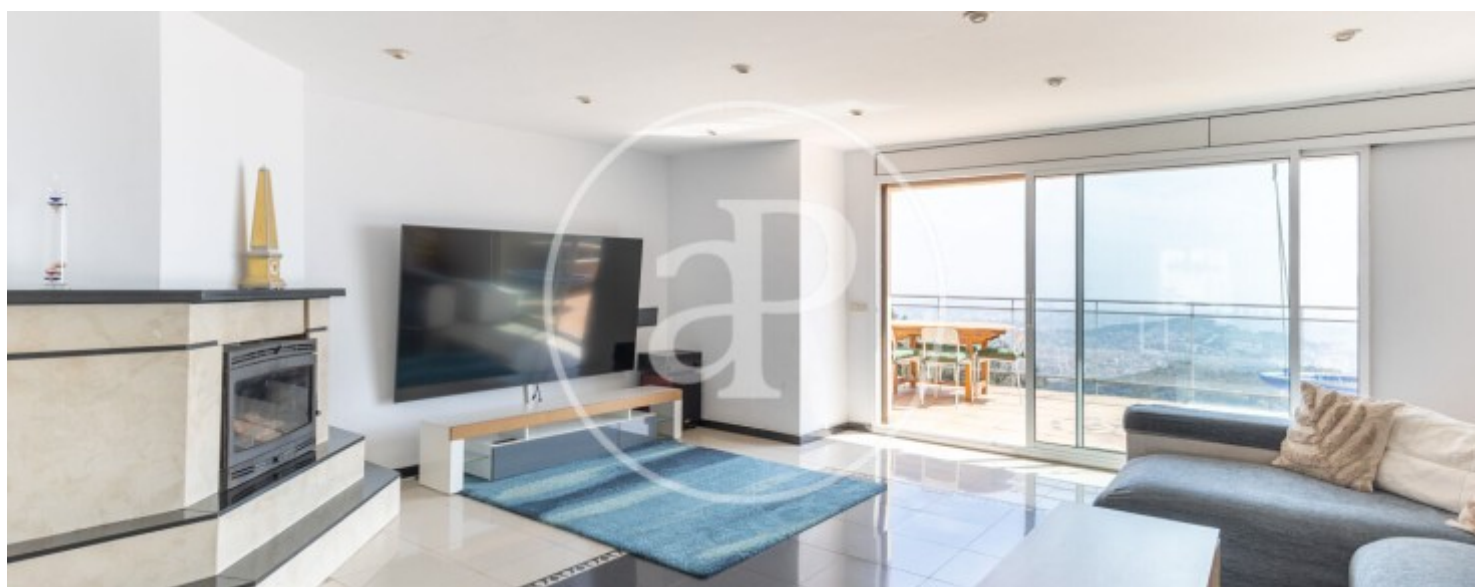
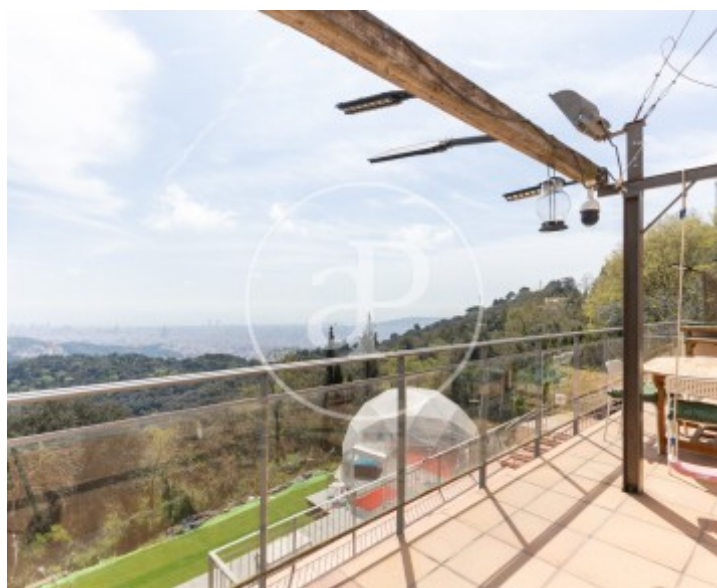
REF. VSC2504012





Vallvidrera, Barcelona

REF. VSC2504012



Vallvidrera, Barcelona

REF. VSC2504012





Vallvidrera, Barcelona

REF. VSC2504012



The information about any property is not binding to any offer or contract. Any verbal or written declaration made by aProperties with regards to the value or condition of the property should not be considered accurate or factual. The pictures make reference to some parts of the property at the times that they were taken. The areas, dimensions and distances that are given are approximate and should be checked by the client. The images are computer generated and are just an approximate indication of the real appearance of the property; these may change at any time. The information with regards to the property may also change at any time.

For **more information** or  
to make an appointment

[apropertiesbarcelona@aproperties.es](mailto:apropertiesbarcelona@aproperties.es)  
Tel: 93 528 89 08  
[www.aproperties.es](http://www.aproperties.es)