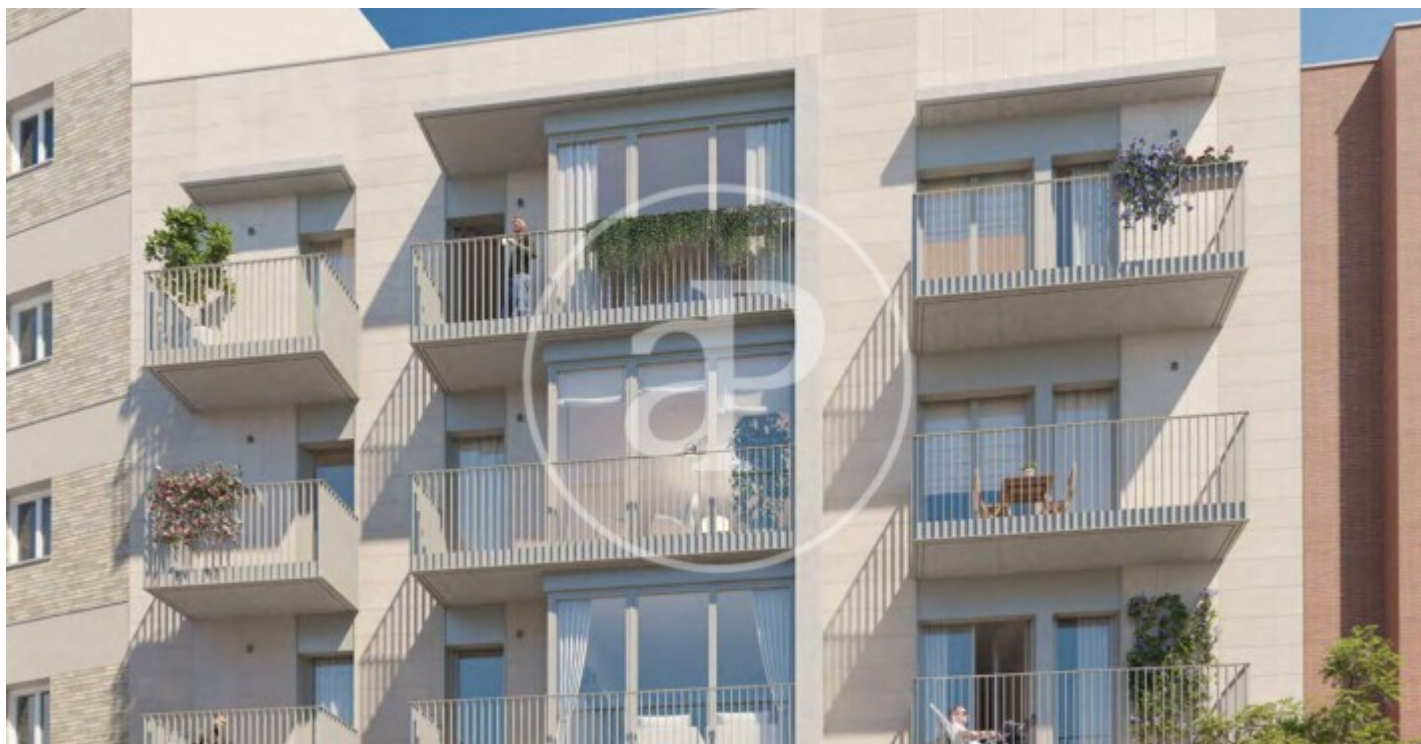


(Vallcarca)

Ref: ONB2302001



New building (work) for sale with Terrace in Vallcarca (Barcelona)

New development comprising 12 2 and 3-bedroom homes located in the Vallcarca i els Penitents neighbourhood of Barcelona. The project has parking, storage rooms and pre-installation for charging electric vehicles. Its interiors are built to the highest quality standards and feature designer finishes that will raise the comfort and well-being of its future owners to a higher level. In addition, it will enjoy an aerothermal air conditioning system, a clean, ecological and environmentally friendly energy, which provides cooling in summer, heating in winter and hot water throughout the year at a much lower cost for its future owners. The development is located between the Putxet and Coll hills, in the district of Gràcia and at the foot of the Collserola mountain range. The neighbourhood of Vallcarca i els Penitents is a quiet area surrounded by countless gardens and green areas ideal for disconnecting. The development is very close to the Vallcarca Bridge and Barcelona's emblematic Park Güell, one of the main emblems of Catalan modernism, where Antoni Gaudí's unique architecture coexists with a diversity of species and its own unique ecosystem.

Barcelona / Vallcarca

Surface
62 m² - 107 m²
Units
12
Completion
Q1 2023

- ✓ Views
- ✓ Heating
- ✓ Boxroom
- ✓ AACC
- ✓ Terrace
- ✓ Lift
- ✓ Has parking

Price from 558,000 €



(Vallcarca)

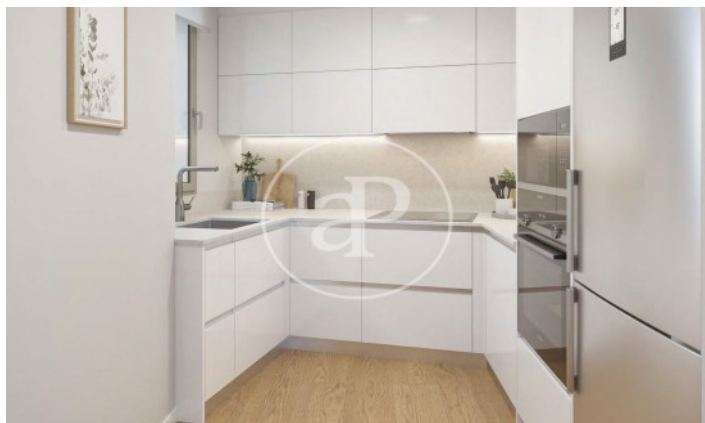
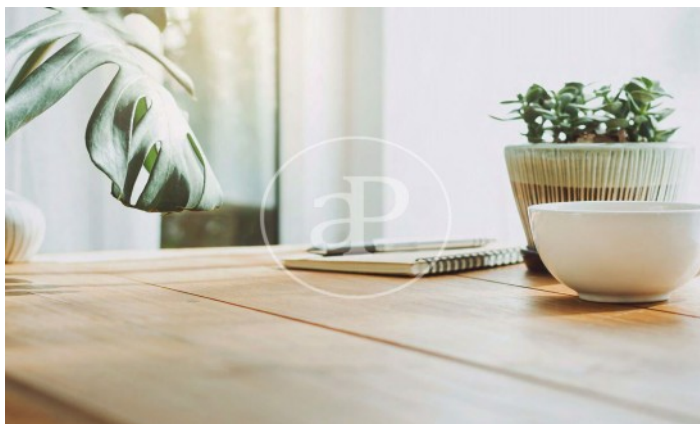
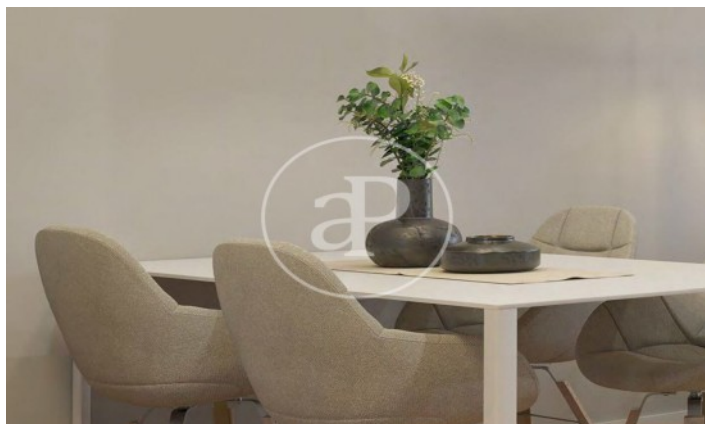
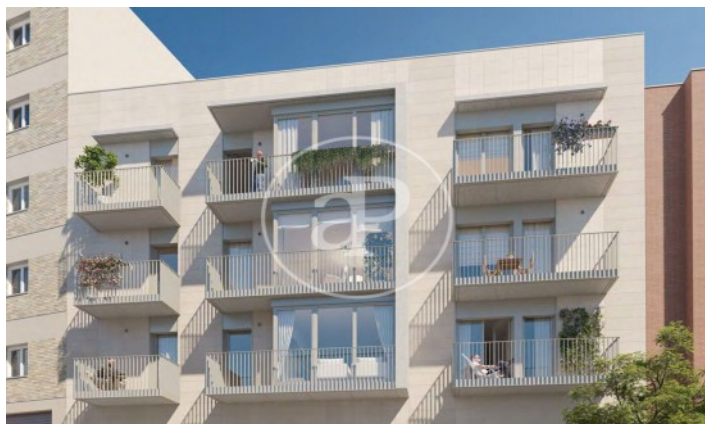
Ref: ONB2302001

Units in this development

Type	Unit	Surface	Terrace	Bedrooms	Bathrooms	Price	State
Duplex	Bajo 1	107 m ²	1 (14.20 m ²)	3	2	€ 558,000	Available
Duplex	Bajo 2	87 m ²	1 (115.63 m ²)	2	2	€ 604,000	Available

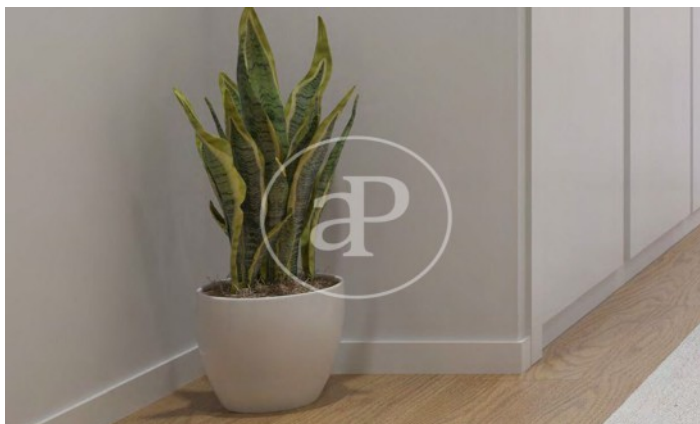
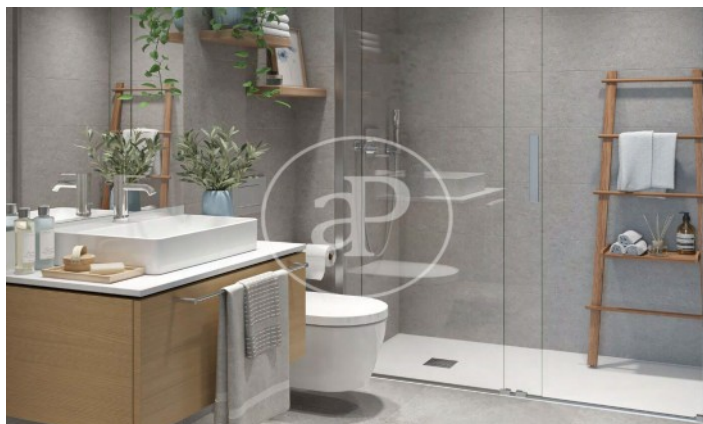
(Vallcarca)

Ref: ONB2302001



(Vallcarca)

Ref: ONB2302001



The information about any property is not binding to any offer or contract. Any verbal or written declaration made by aProperties with regards to the value or condition of the property should not be considered accurate or factual. The pictures make reference to some parts of the property at the times that they were taken. The areas, dimensions and distances that are given are approximate and should be checked by the client. The images are computer generated and are just an approximate indication of the real appearance of the property; these may change at any time. The information with regards to the property may also change at any time.

Contact us today for more information or to arrange a viewing

Tel: 93 528 89 08

apropertiesbarcelona@aproperties.es

<https://www.aproperties.es>