

Sarrià, Barcelona

REF. AB2510003

House for rent in Can Caralleu

Features

- ✓ Views
- ✓ Boxroom
- ✓ Terrace
- ✓ Security
- ✓ Has parking
- ✓ Heating
- ✓ AACC
- ✓ Backyard
- ✓ Concierge

Surface

257 m²

Bedrooms

3

Bathrooms

4



Price

3,283 €

In one of the most prestigious residential areas of Barcelona, we present this fabulous single-family home of 270 m², surrounded by tranquility and nature.

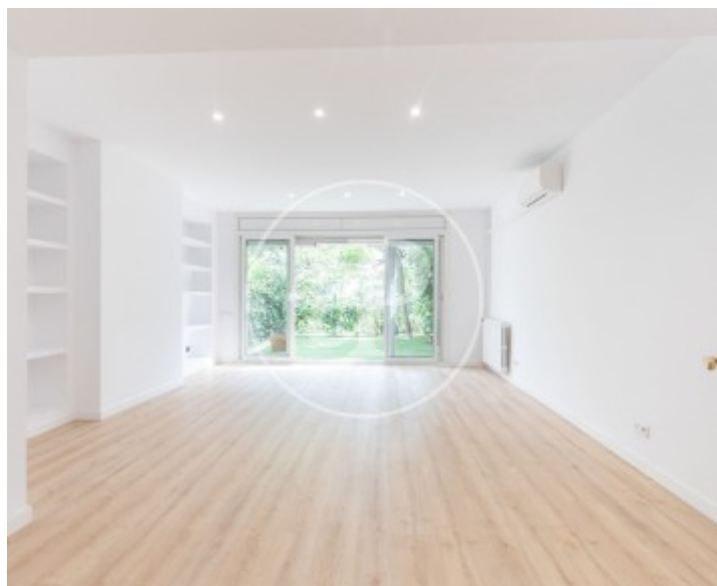
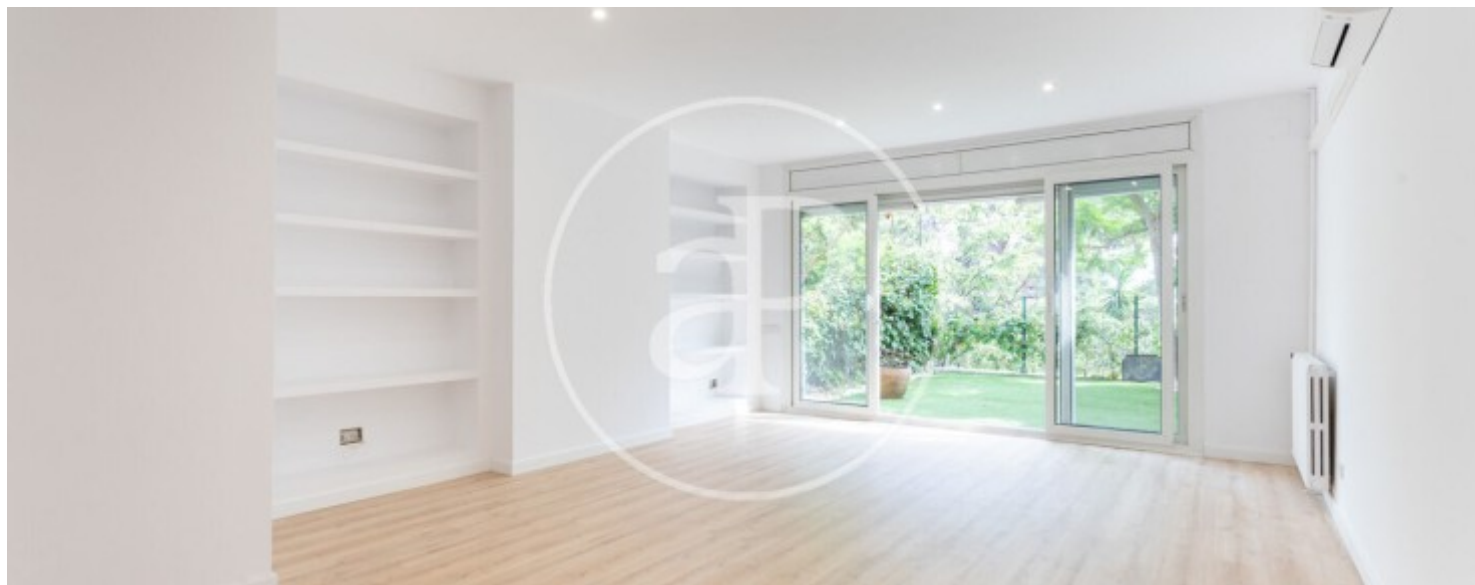
The house is distributed over three comfortable floors: Main floor: spacious living-dining room with direct access to the private garden, facing south to enjoy natural light all day long. Independent kitchen with laundry area and guest toilet. First floor: three exterior bedrooms with built-in wardrobes. The master suite features a walk-in closet and private bathroom. The two junior bedrooms share a full bathroom. Basement floor: multipurpose space of approximately 30 m² with parquet flooring, ideal as a

playroom, office, or guest area, plus a full bathroom. The property includes a garage with capacity for three vehicles, individual heating by gas radiators, air conditioning by splits in the living room and master bedroom, electric blinds, and security service. Located in Can Caralleu, next to the Collserola National Park and Parc de la Oreneta, ideal for those who want to live surrounded by vegetation and nature in Barcelona, close to the most prestigious national and international schools, and with very good access to Barcelona's entrances and exits via the Ronda de Dalt.* In compliance...

Contact us,
we will be happy to assist you,
to offer you more details and information.

Sarrià, Barcelona

REF. AB2510003



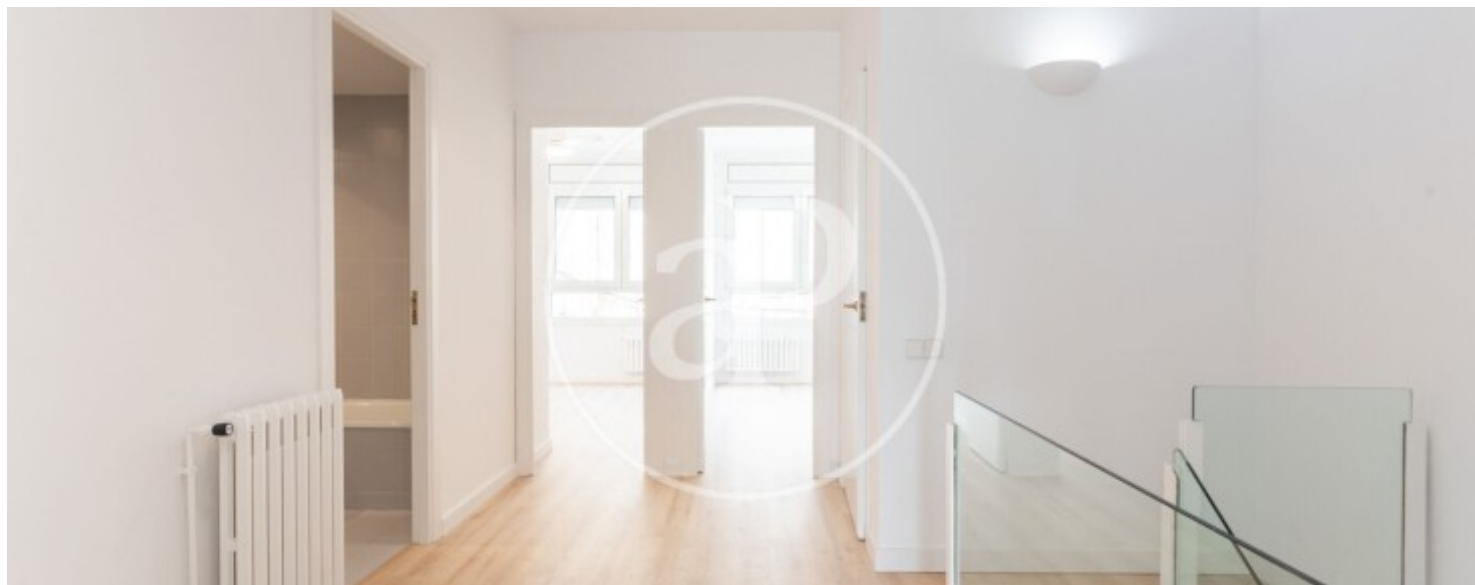
Sarrià, Barcelona

REF. AB2510003



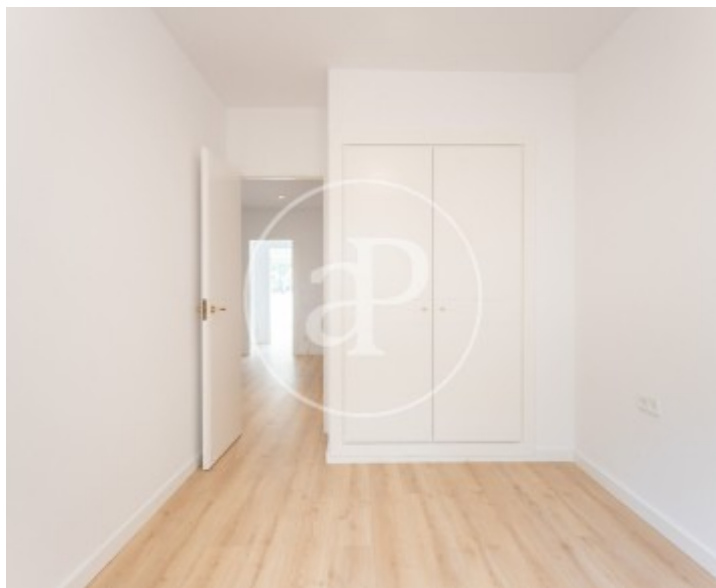
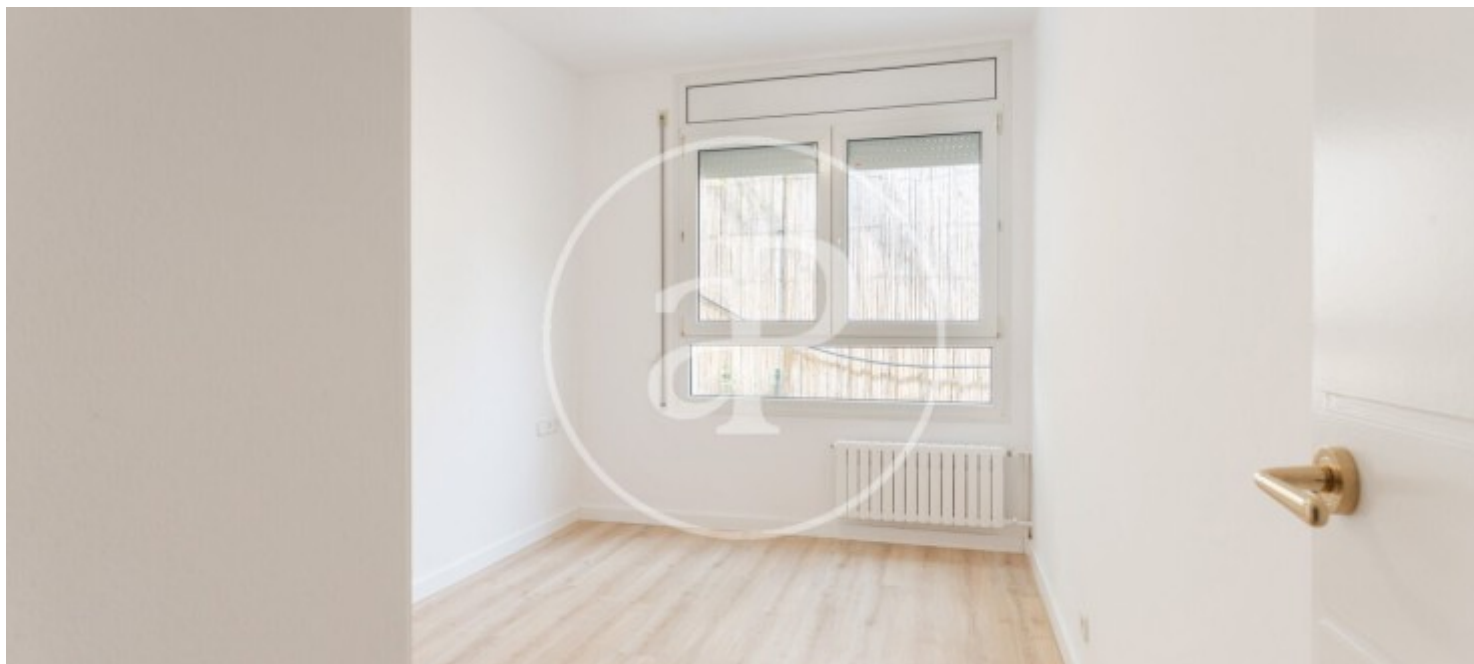
Sarrià, Barcelona

REF. AB2510003



Sarrià, Barcelona

REF. AB2510003



The information about any property is not binding to any offer or contract. Any verbal or written declaration made by aProperties with regards to the value or condition of the property should not be considered accurate or factual. The pictures make reference to some parts of the property at the times that they were taken. The areas, dimensions and distances that are given are approximate and should be checked by the client. The images are computer generated and are just an approximate indication of the real appearance of the property; these may change at any time. The information with regards to the property may also change at any time.

For **more information** or
to make an appointment

apropertiesbarcelona@aproperties.es
Tel: 93 528 89 08
www.aproperties.es