

Sants, Barcelona

REF. AB1910037

# Bright apartment with views in the area of El Port -Plaça Cerdà

## Features

- ✓ Views
- ✓ AACC
- ✓ Lift
- ✓ Heating
- ✓ Terrace
- ✓ Has parking

Surface

**82 m<sup>2</sup>**

Bedrooms

**2**

Bathrooms

**2**

Price

**1,240 €**



This house is in an excellent location in the Marina del Port area, in the Sans-Montjuic District, a few meters from the Cerdà Square, very well connected with the exit to the Prat Airport, with the north of the city by the Ronda del Mig and with the center through Plaza España and the Gran Vía, with a nearby metro station, and multiple shops, supermarkets and other services.

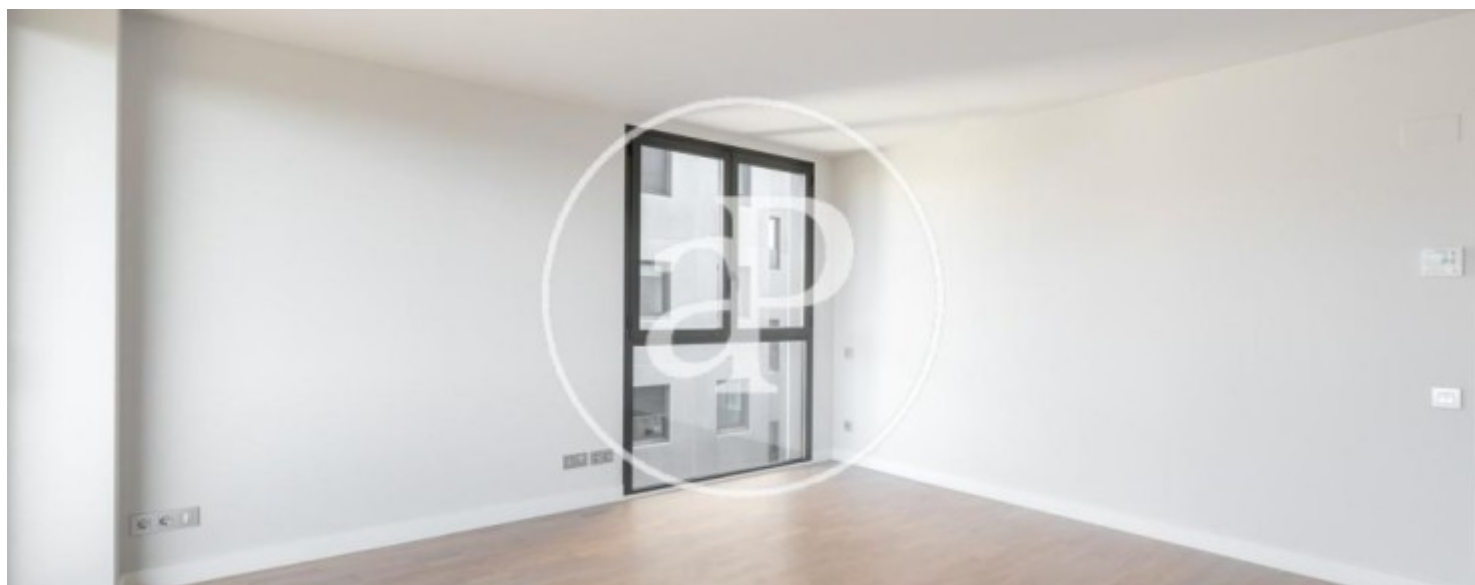
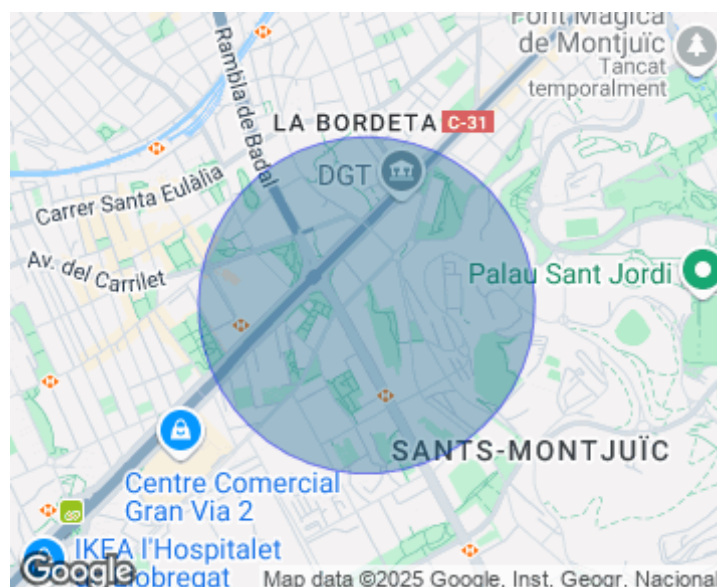
The apartment consists of 88.27 m2, very well distributed as a corner and upstairs, has lots of light and is completely exterior. It has a living room with access to the balcony terrace very enjoyable and sunny, the kitchen, two bedrooms, the main ensuite and the other double with a bathroom, the bedrooms are exterior with fitted wardrobes. The house has parquet floors, excellent finishes and in an impeccable

condition, ready to move into. The parking space and a storage room in the same building are optional and are NOT included in the rental price. The monthly rental of the parking is € 115 and the storage room € 85. \* In compliance with Law 12/2023 and Law 18/2007, we inform that This property does not have an index. Rent of the last lease contract: 1.300,00 €

**Contact us,**  
we will be happy to assist you,  
to offer you more details and information.

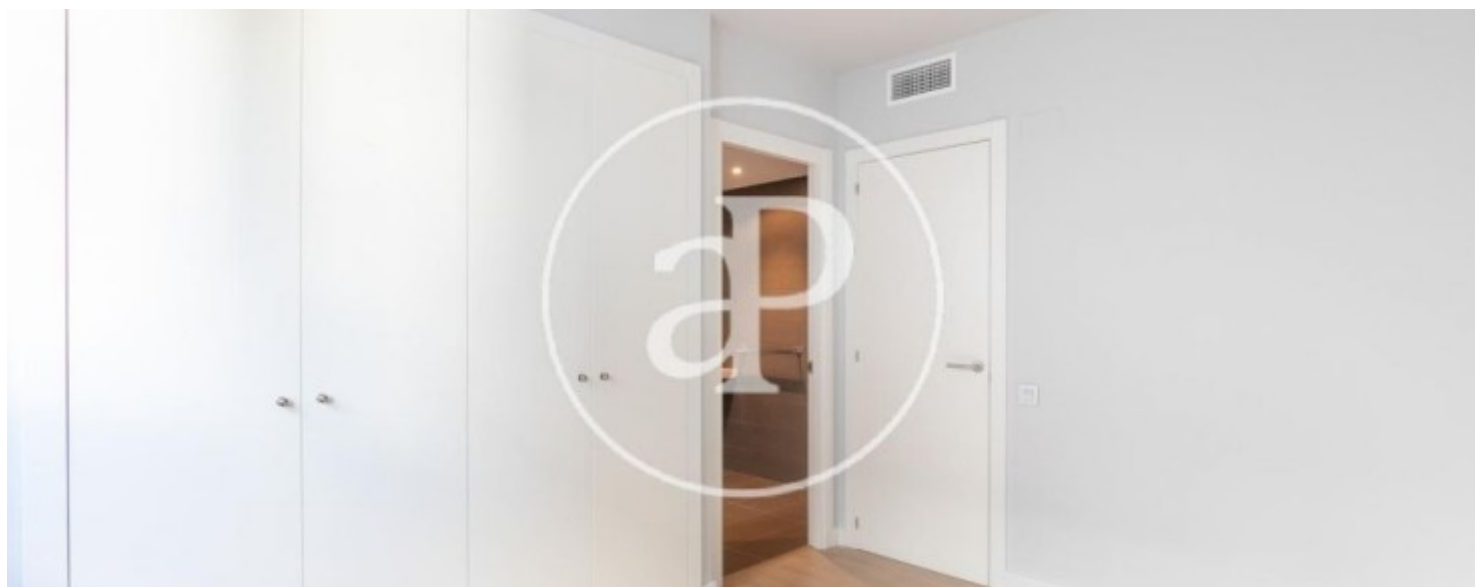
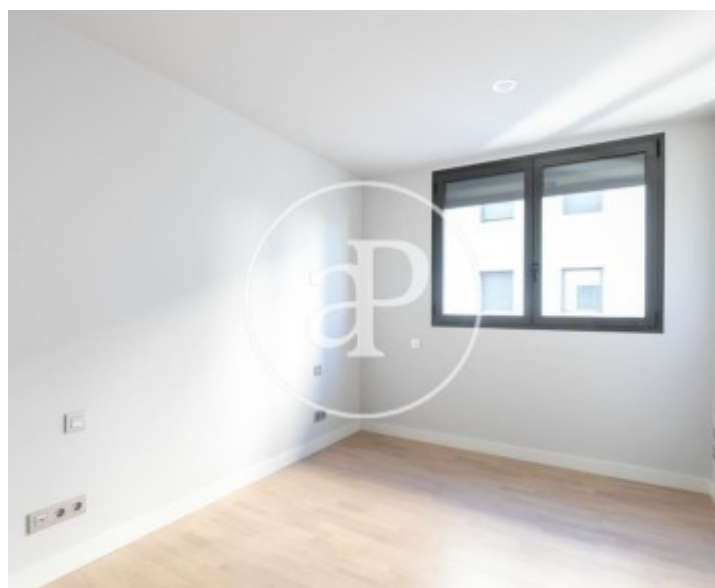
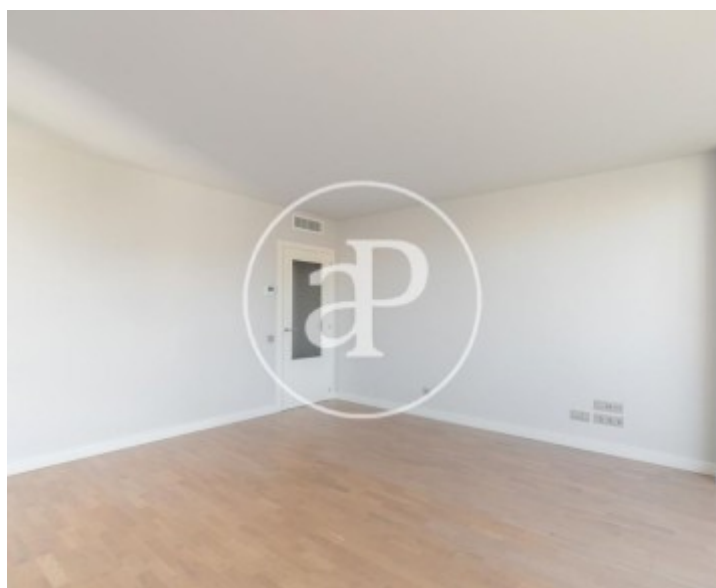
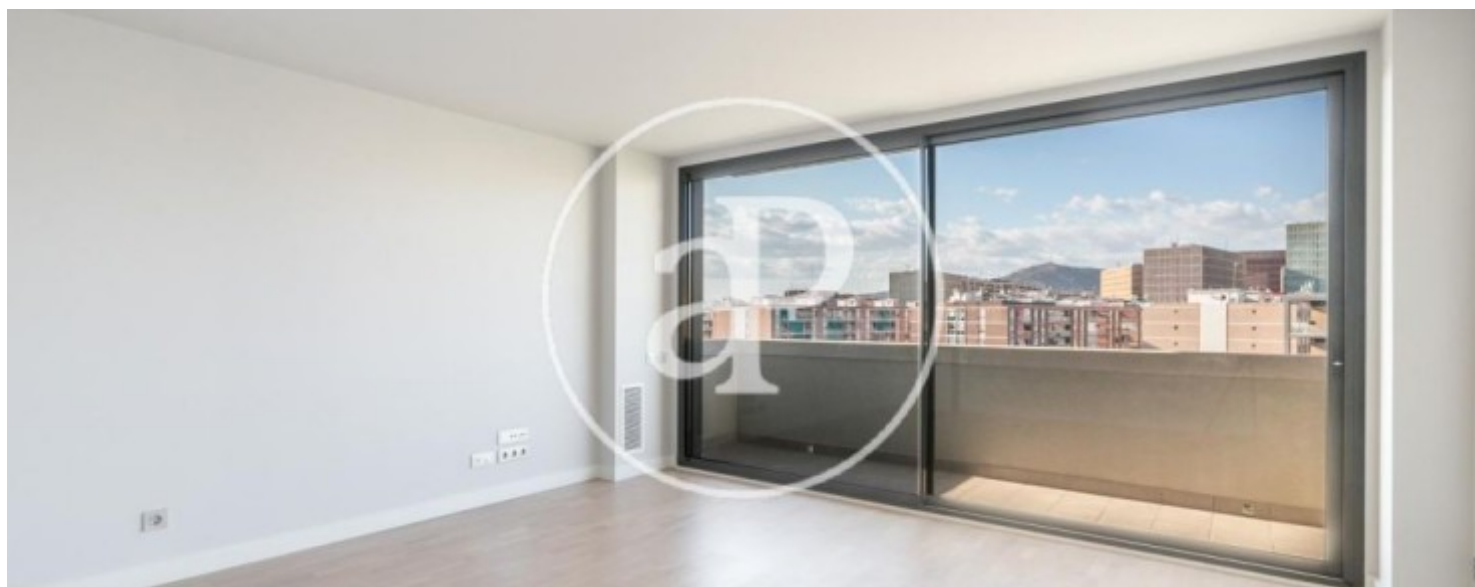
Sants, Barcelona

REF. AB1910037



Sants, Barcelona

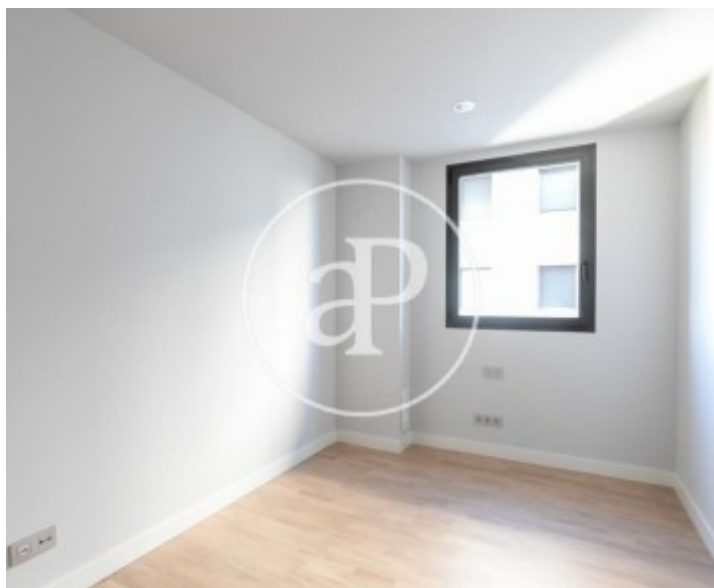
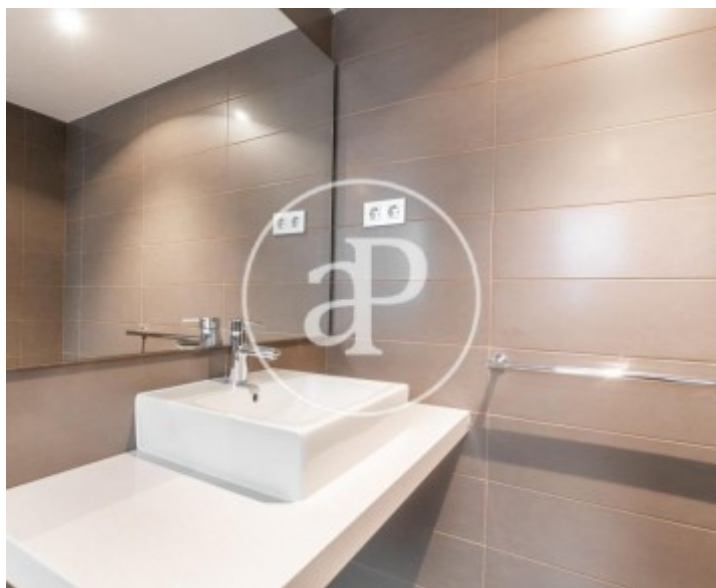
REF. AB1910037





Sants, Barcelona

REF. AB1910037



Sants, Barcelona

REF. AB1910037



The information about any property is not binding to any offer or contract. Any verbal or written declaration made by aProperties with regards to the value or condition of the property should not be considered accurate or factual. The pictures make reference to some parts of the property at the times that they were taken. The areas, dimensions and distances that are given are approximate and should be checked by the client. The images are computer generated and are just an approximate indication of the real appearance of the property; these may change at any time. The information with regards to the property may also change at any time.

For **more information** or  
to make an appointment

[apropertiesbarcelona@aproperties.es](mailto:apropertiesbarcelona@aproperties.es)  
Tel: 93 528 89 08  
[www.aproperties.es](http://www.aproperties.es)