

Sant Gervasi - La Bonanova, Barcelona

REF. VB2211065

House for sale in front of Gaudí's Bellesguard Tower

Features

- ✓ Views
- ✓ Furnished
- ✓ AACC
- ✓ Backyard
- ✓ Lift
- ✓ Heating
- ✓ Boxroom
- ✓ Terrace
- ✓ Pool
- ✓ Has parking

Surface
437 m²

Bedrooms
5

Bathrooms
4

Price
1,950,000 €



Property of 437 m² built and 280 m² usable, consisting of three floors, all connected by an internal staircase, as well as an elevator.

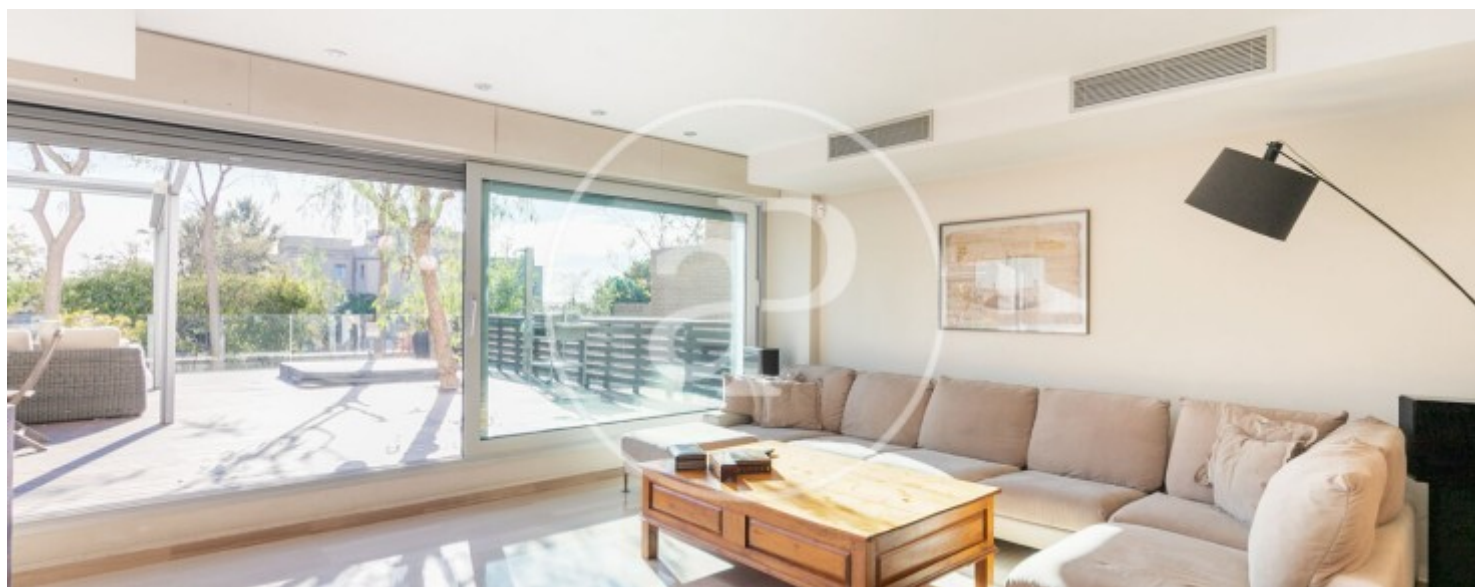
On the ground floor, we find the open-plan kitchen and laundry area, connected to the living-dining room, which provides access to a 102 m² garden with a jacuzzi and views of Gaudí's tower. A guest toilet completes the space. On the first floor, where the main entrance is located, there is, in addition to the foyer, two double bedrooms, all exterior with unobstructed views of the city. Two of them share one of the two bathrooms available. On the second floor, there are two more bedrooms, sharing a

bathroom. The attic floor has access to a 54 m² solarium terrace, offering stunning views of both Montjuïc and Collserola. At the entrance, the house also features another 25 m² terrace. Additionally, in the basement, there is a 77 m² storage room with access to a 113 m² parking area, accommodating three cars and two motorcycles. A fantastic property in one of the best residential areas of Barcelona, well connected and with easy access to the city's exit routes.

Contact us,
we will be happy to assist you,
to offer you more details and information.

Sant Gervasi - La Bonanova, Barcelona

REF. VB2211065



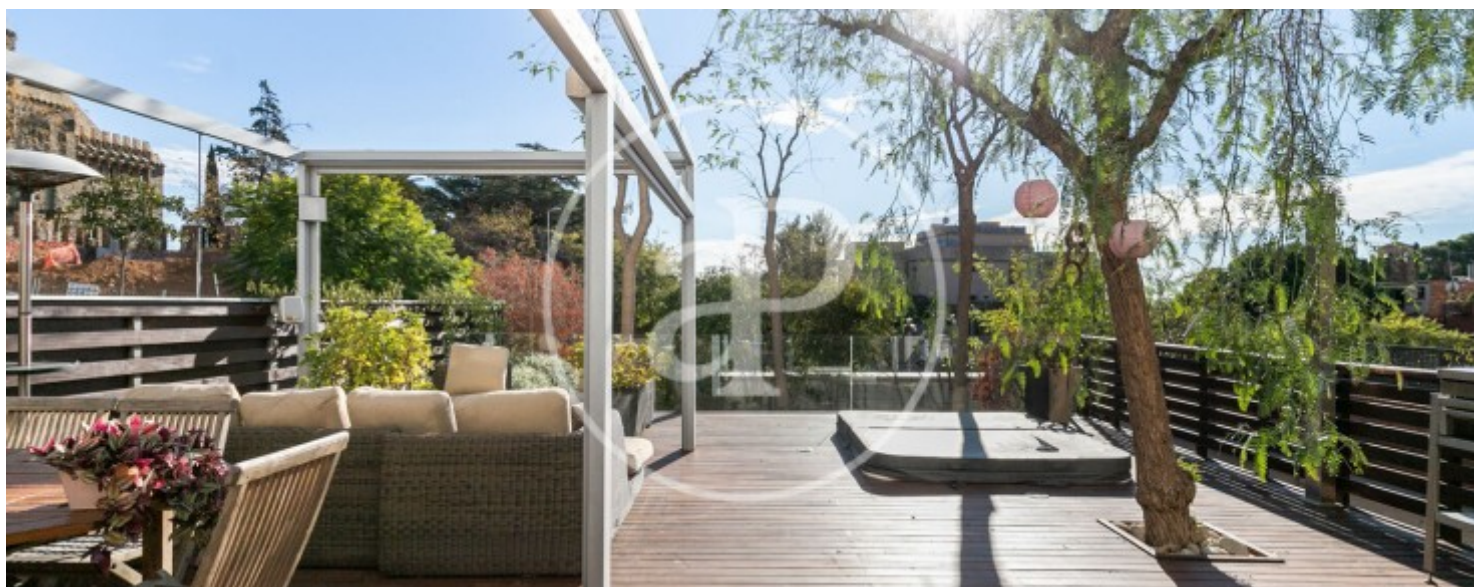
Sant Gervasi - La Bonanova, Barcelona

REF. VB2211065



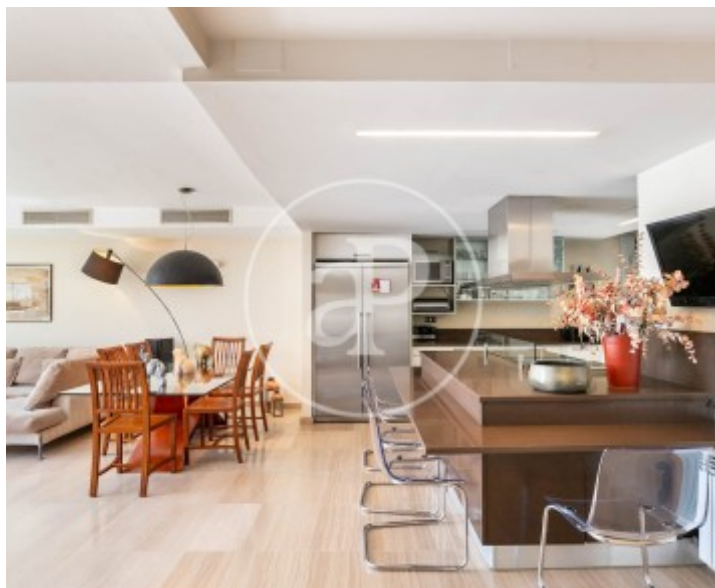
Sant Gervasi - La Bonanova, Barcelona

REF. VB2211065



Sant Gervasi - La Bonanova, Barcelona

REF. VB2211065



The information about any property is not binding to any offer or contract. Any verbal or written declaration made by aProperties with regards to the value or condition of the property should not be considered accurate or factual. The pictures make reference to some parts of the property at the times that they were taken. The areas, dimensions and distances that are given are approximate and should be checked by the client. The images are computer generated and are just an approximate indication of the real appearance of the property; these may change at any time. The information with regards to the property may also change at any time.

For **more information** or
to make an appointment

apropertiesbarcelona@aproperties.es
Tel: 93 528 89 08
www.aproperties.es