

Sant Gervasi - La Bonanova, Barcelona

REF. VB2604002

# Penthouse for Sale in Sant Gervasi-Bonanova

## Features

- ✓ Views
- ✓ AACC
- ✓ Backyard
- ✓ Lift
- ✓ Heating
- ✓ Terrace
- ✓ Pool
- ✓ Has parking

Price

**1,800,000 €**

Surface

**202 m<sup>2</sup>**

Bedrooms

**3**

Bathrooms

**3**



## Duplex penthouse located in a modern building from 2007.

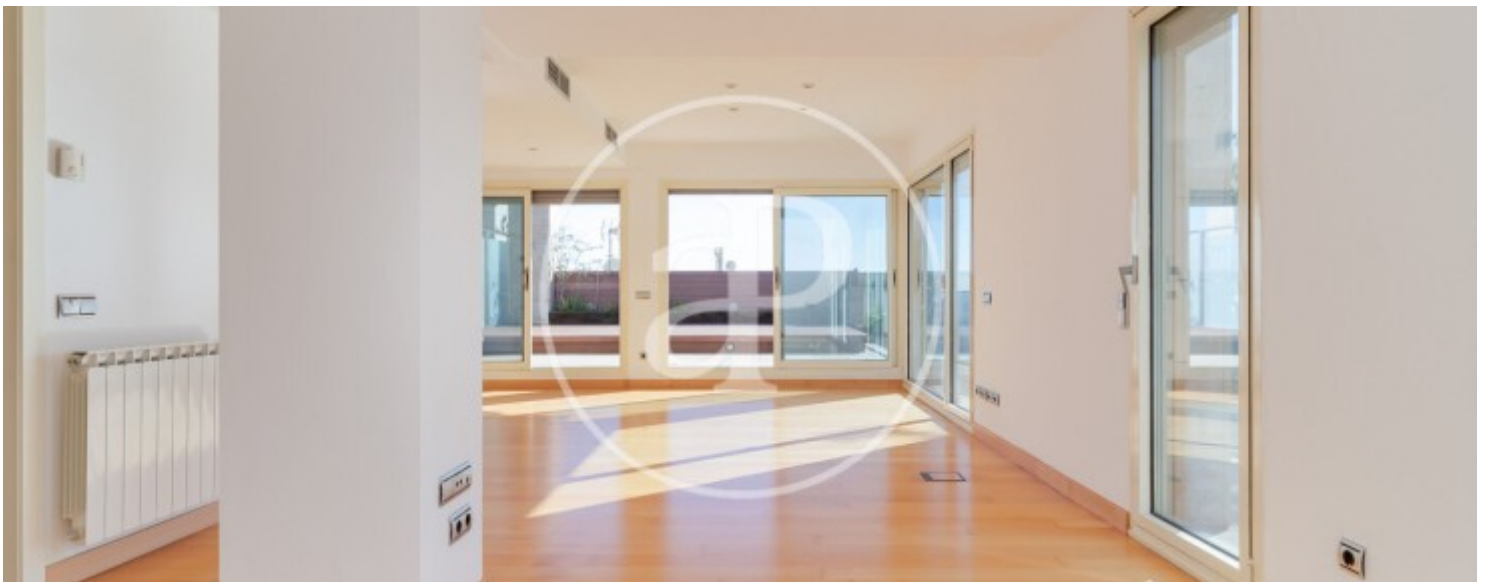
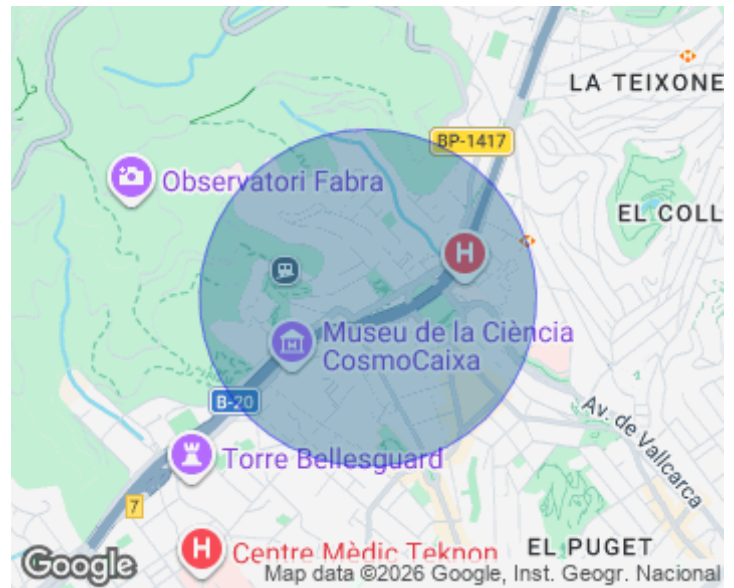
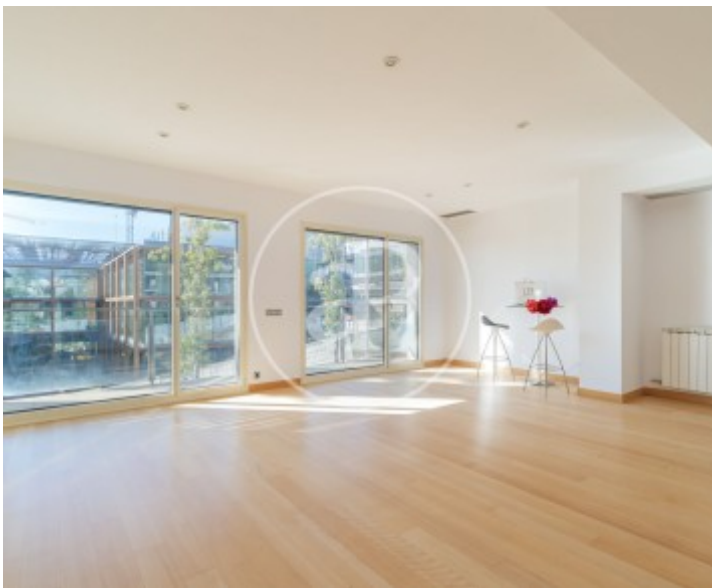
On the first floor, upon entering, we find a separate kitchen and a very spacious living room. Both areas have access to a terrace. The night area includes a suite and another bedroom with a bathroom. On the upper floor, there is a large bedroom with a spacious walk-in closet and bathroom, as well as an additional area that could be used as a second living space or even another bedroom. From this room, there is access to a large terrace of approximately 20 m<sup>2</sup>. All spaces are exterior and benefit from one of the best orientations in Barcelona. Being a corner property, it is very bright and allows you to

enjoy both sunrise and sunset views. The property features a landscaped communal area with a swimming pool and concierge service. The price includes two large parking spaces. It is located in the Sarrià-Sant Gervasi neighborhood, very close to the CosmoCaixa museum and with easy access to Barcelona via the Ronda de Dalt.

**Contact us,**  
we will be happy to assist you,  
to offer you more details and information.

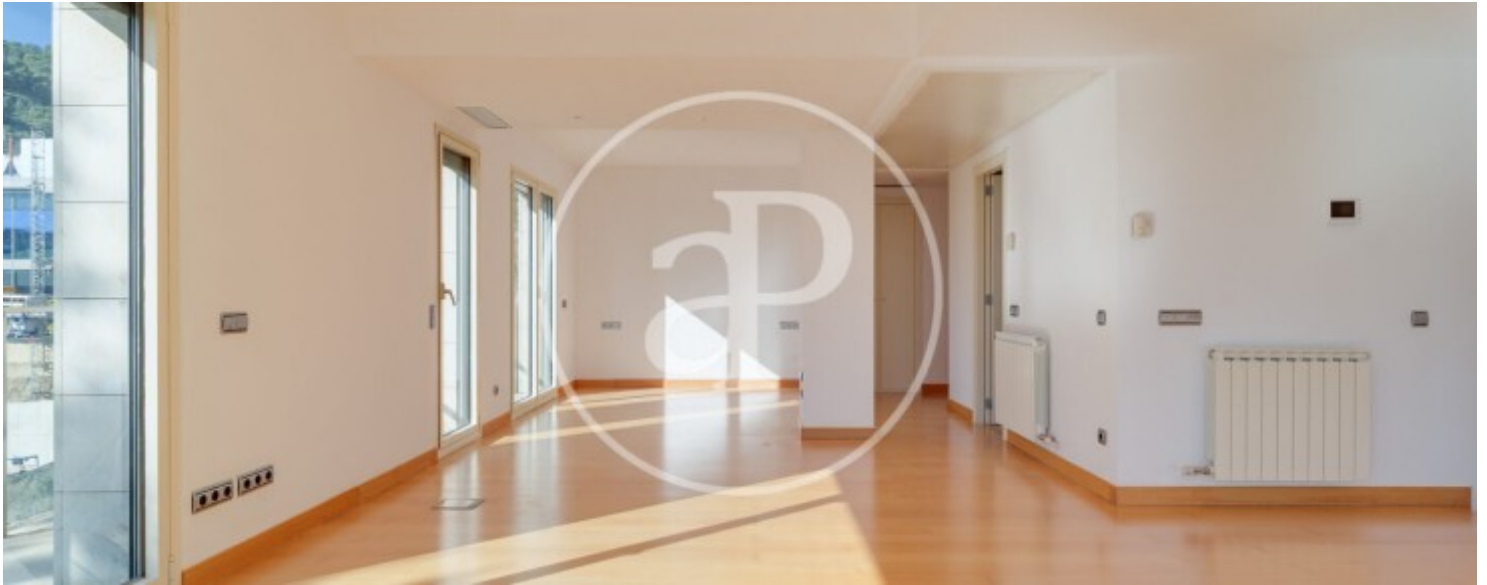
Sant Gervasi - La Bonanova, Barcelona

REF. VB2604002



Sant Gervasi - La Bonanova, Barcelona

REF. VB2604002



Sant Gervasi - La Bonanova, Barcelona

REF. VB2604002



Sant Gervasi - La Bonanova, Barcelona

REF. VB2604002



The information about any property is not binding to any offer or contract. Any verbal or written declaration made by aProperties with regards to the value or condition of the property should not be considered accurate or factual. The pictures make reference to some parts of the property at the times that they were taken. The areas, dimensions and distances that are given are approximate and should be checked by the client. The images are computer generated and are just an approximate indication of the real appearance of the property; these may change at any time. The information with regards to the property may also change at any time.

For **more information** or  
to make an appointment

[apropertiesbarcelona@aproperties.es](mailto:apropertiesbarcelona@aproperties.es)  
Tel: 93 528 89 08  
[www.aproperties.es](http://www.aproperties.es)