



Sant Gervasi - La Bonanova, Barcelona

REF. A1606014

# Exclusive outward-facing apartment for rent close to Plaça Bonanova

## Features

- ✓ Heating
- ✓ Terrace
- ✓ Has parking
- ✓ Boxroom
- ✓ Lift

Surface  
**195 m<sup>2</sup>**

Bedrooms  
**4**

Bathrooms  
**3**

Price  
**2,800 €**



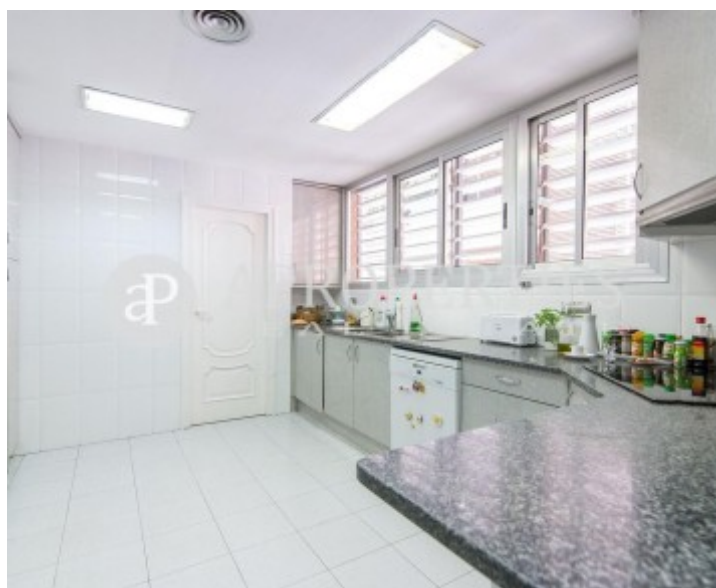
Located in Sant Gervasi-La Bonanova district, just a step away from Plaça Bonanova, very well connected to Ronda de Dalt and close to all kinds of public transport, shops, services and schools, we find this magnificent apartment of approximately 170sqm plus a 20sqm terrace. It has a perfect layout clearly differentiating day and night areas. In the day area we find an entrance hall that leads to a beautiful living-dining room of approximately 45sqm in two pieces, with access to a 20sqm terrace. A large functional eat-in kitchen, fully equipped with electrical appliances, and a guest bathroom with shower. In the sleeping area, there are four bedrooms, all outward-facing: a master suite with dressing room and bathroom, a junior suite and two double rooms sharing a bathroom, all with built-in

wardrobes. Air conditioning throughout the house and heating gas. Two parking spaces and a storage room in the same building complete this excellent property. Available from September. It is rented unfurnished. \* In compliance with Law 12/2023 and Law 18/2007, we inform that

**Contact us,**  
we will be happy to assist you,  
to offer you more details and information.

Sant Gervasi - La Bonanova, Barcelona

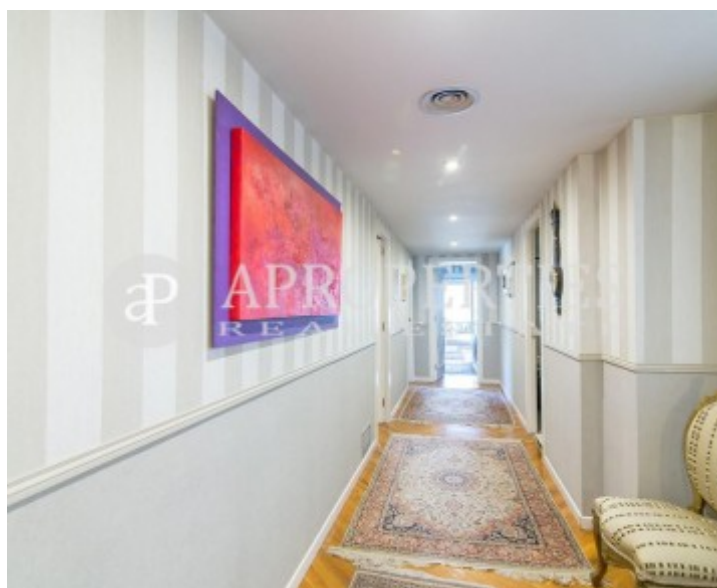
REF. A1606014





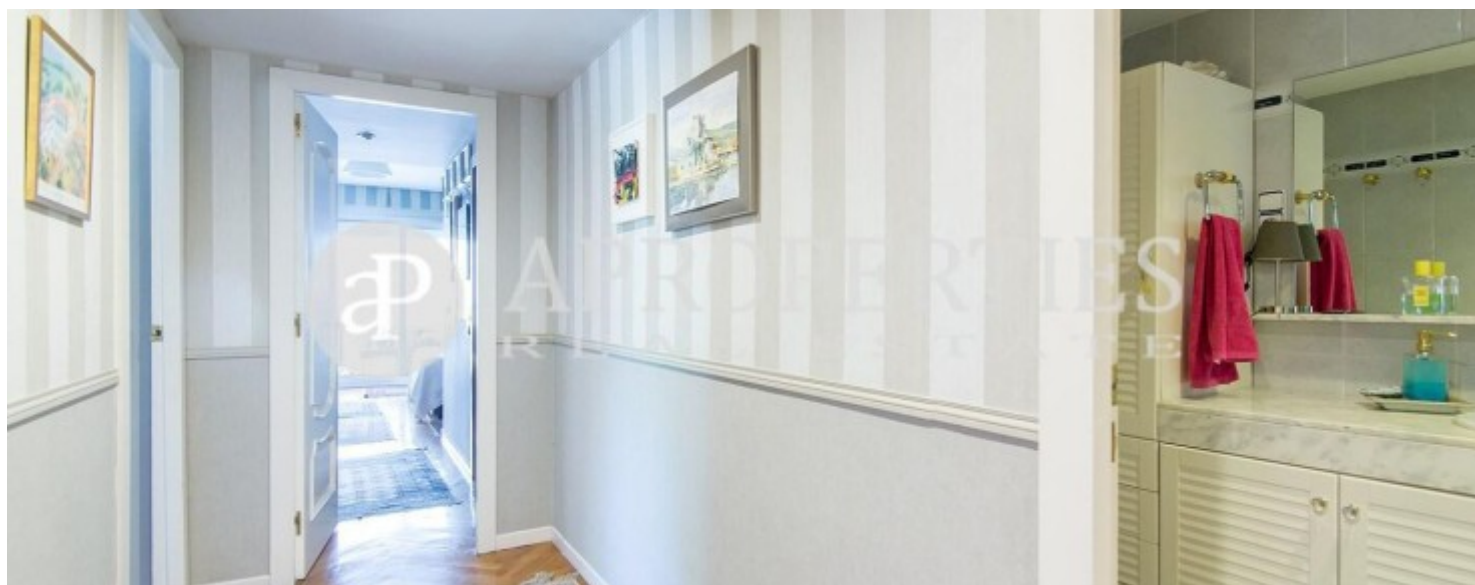
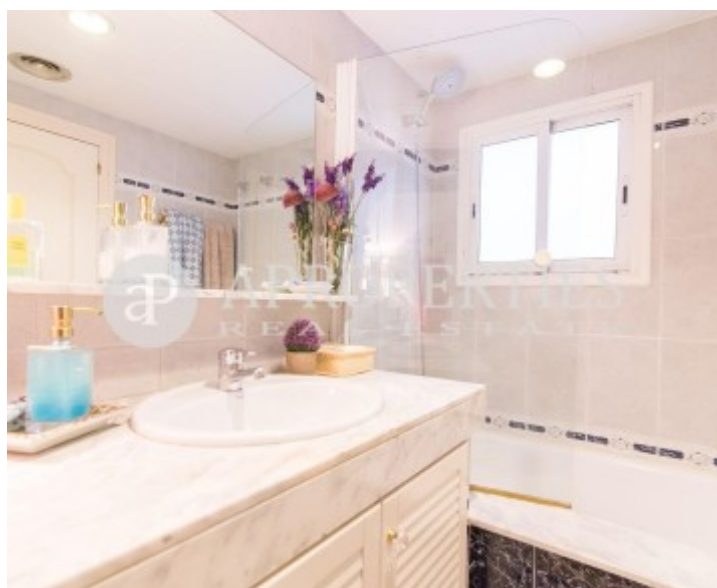
Sant Gervasi - La Bonanova, Barcelona

REF. A1606014



Sant Gervasi - La Bonanova, Barcelona

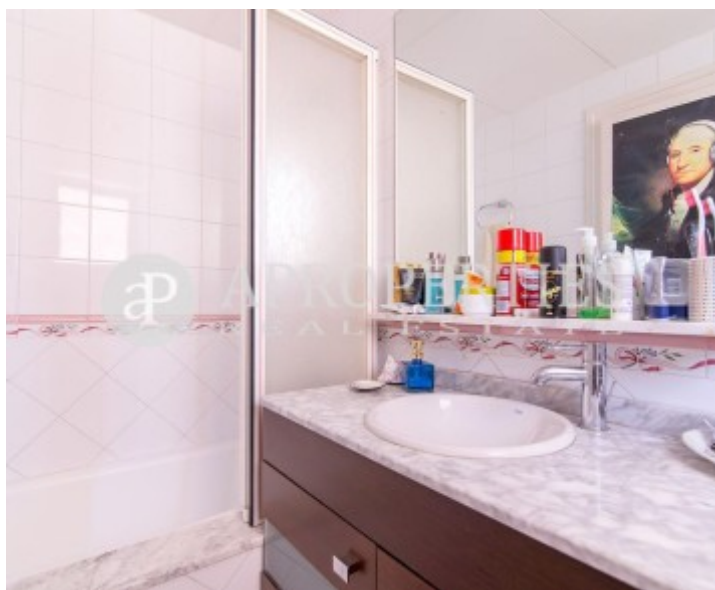
REF. A1606014





Sant Gervasi - La Bonanova, Barcelona

REF. A1606014



The information about any property is not binding to any offer or contract. Any verbal or written declaration made by aProperties with regards to the value or condition of the property should not be considered accurate or factual. The pictures make reference to some parts of the property at the times that they were taken. The areas, dimensions and distances that are given are approximate and should be checked by the client. The images are computer generated and are just an approximate indication of the real appearance of the property; these may change at any time. The information with regards to the property may also change at any time.

For **more information** or  
to make an appointment

[apropertiesbarcelona@aproperties.es](mailto:apropertiesbarcelona@aproperties.es)  
Tel: 93 528 89 08  
[www.aproperties.es](http://www.aproperties.es)