

Sant Gervasi - La Bonanova, Barcelona

REF. VB2510032

# Apartment for sale in the Mandri area

## Features

- ✓ Views
- ✓ AACC
- ✓ Lift
- ✓ Has parking
- ✓ Heating
- ✓ Terrace
- ✓ Concierge

Surface

**135 m<sup>2</sup>**

Bedrooms

**4**

Bathrooms

**2**



Price

**975,000 €**

**In one of the most exclusive residential areas of Barcelona, between Mandri and Ganduxer and next to Peace Park, we present this bright 135 m<sup>2</sup> apartment, completely exterior and in perfect condition.**

The location is unbeatable, surrounded by shops, restaurants, prestigious schools, green areas, and with excellent public transport connections. The property is distributed into a spacious and sunny living-dining room with access to a 10 m<sup>2</sup> terrace, equipped with electric awnings and offering pleasant views of the park. The independent exterior kitchen features a practical pantry, laundry area, and service entrance. It has four exterior bedrooms (three doubles

and one single) and two full bathrooms, ensuring comfort and versatility for the whole family. The apartment is equipped with heating, air conditioning, and boasts excellent finishes that guarantee year-round comfort. The building, in excellent condition, offers concierge service, and the property includes a parking space in the same building, an added value in this privileged area. A unique opportunity to enjoy space, tranquility, and quality of life in the heart of Bonanova.

**Contact us,**  
we will be happy to assist you,  
to offer you more details and information.

Sant Gervasi - La Bonanova, Barcelona

REF. VB2510032





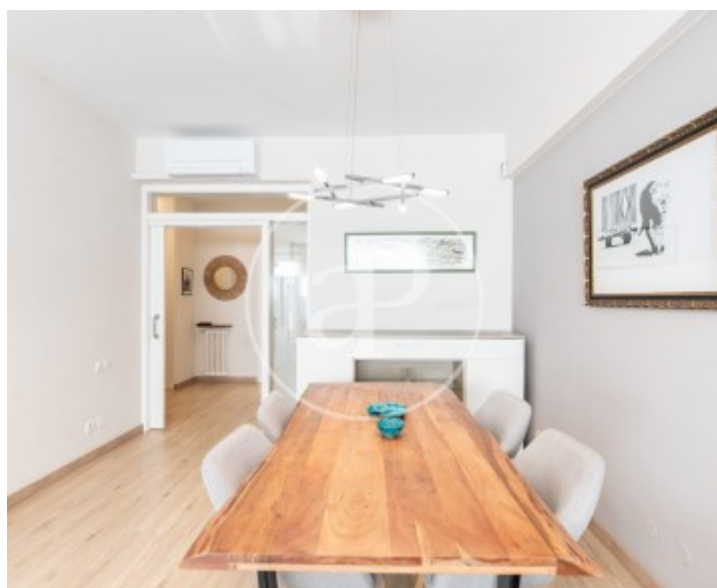
Sant Gervasi - La Bonanova, Barcelona

REF. VB2510032



Sant Gervasi - La Bonanova, Barcelona

REF. VB2510032







**APROPERTIES**  
REAL ESTATE

Paseo de Gracia 85  
08008 Barcelona  
T. 93 528 89 08  
[www.aproperties.es](http://www.aproperties.es)

**Sant Gervasi - La Bonanova, Barcelona**

**REF. VB2510032**



The information about any property is not binding to any offer or contract. Any verbal or written declaration made by aProperties with regards to the value or condition of the property should not be considered accurate or factual. The pictures make reference to some parts of the property at the times that they were taken. The areas, dimensions and distances that are given are approximate and should be checked by the client. The images are computer generated and are just an approximate indication of the real appearance of the property; these may change at any time. The information with regards to the property may also change at any time.

For **more information** or  
to make an appointment

[apropertiesbarcelona@aproperties.es](mailto:apropertiesbarcelona@aproperties.es)  
Tel: 93 528 89 08  
[www.aproperties.es](http://www.aproperties.es)