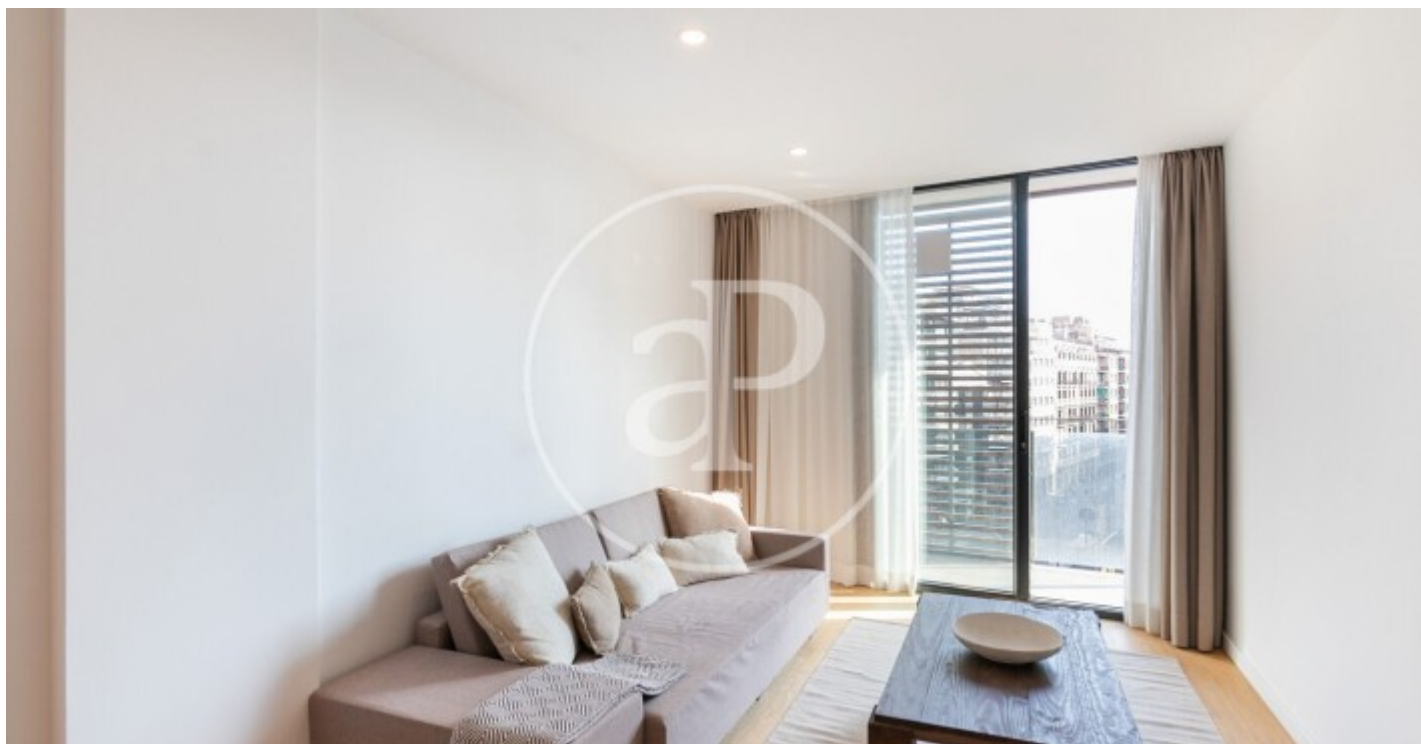


(Sant Gervasi - Galvany)

Ref: ONB1910006



Newly built penthouse with terrace and parking space

Penthouse in excellent location, in Guillem Tell Street, next to Riera de Cassoles Avenue and two steps away from Molina Square. The property on the top floor is distributed in living-dining room with open plan kitchen and access to balconies to the façade and courtyard. It has 3 double bedrooms, one of them en-suite, and has the exclusive use of a 47sq m terrace with private swimming pool on the roof. Includes parking for two cars and storage room.

Barcelona / Sant Gervasi - Galvany

Surface
46 m² - 107 m²

Units
6

Completion
Q4 2021

- ✓ Views
- ✓ Heating
- ✓ Boxroom
- ✓ AACC
- ✓ Terrace
- ✓ Pool
- ✓ Lift
- ✓ Has parking

Price from 1,380,000 €

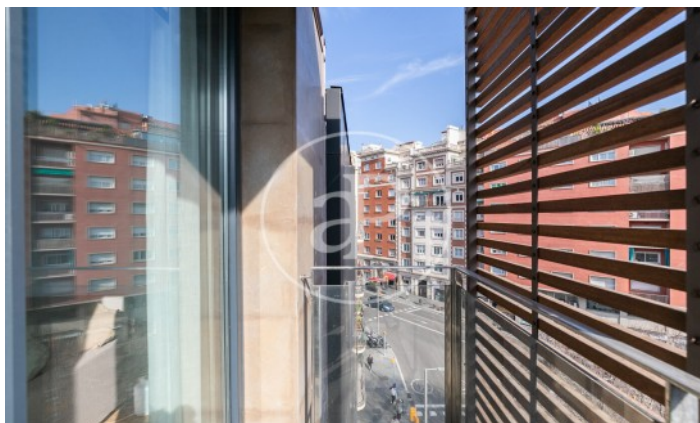
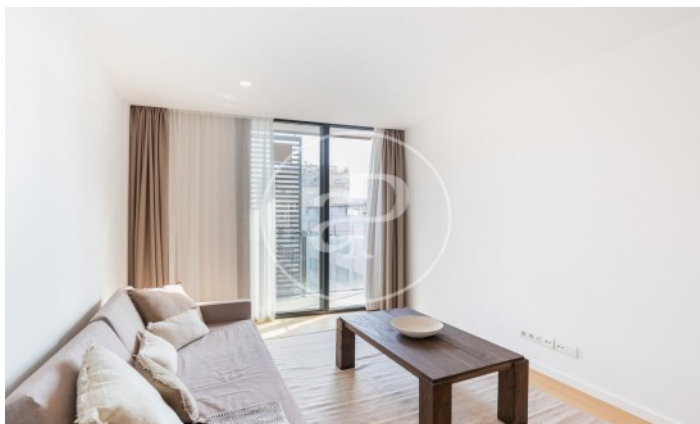
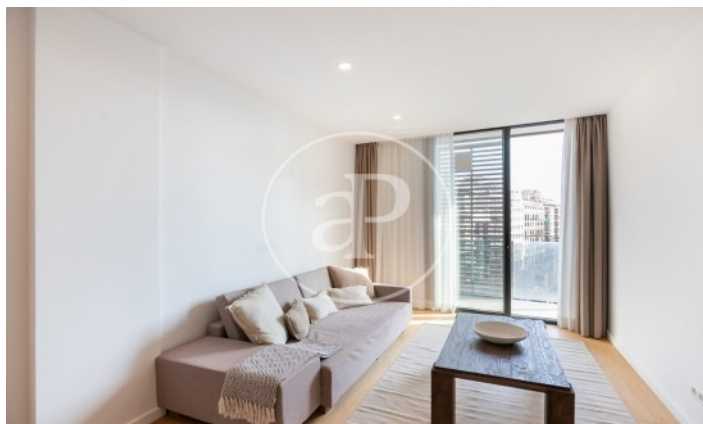
(Sant Gervasi - Galvany)*Ref: ONB1910006*

Units in this development

Type	Unit	Surface	Terrace	Bedrooms	Bathrooms	Price	State
Attic	4° Unica	107 m ²	2 (61 m ²)	3	2	€ 1,380,000	Available

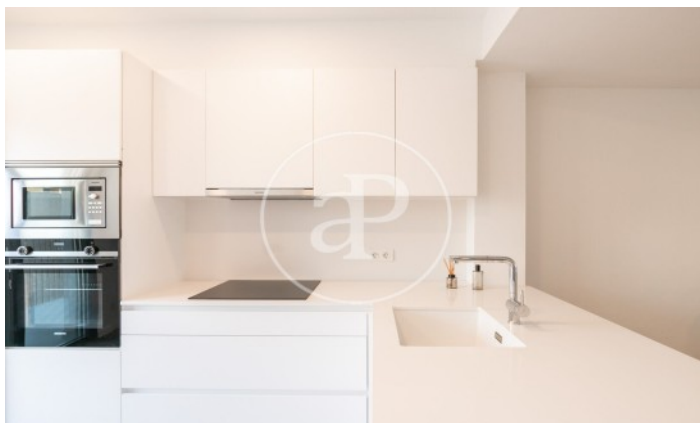
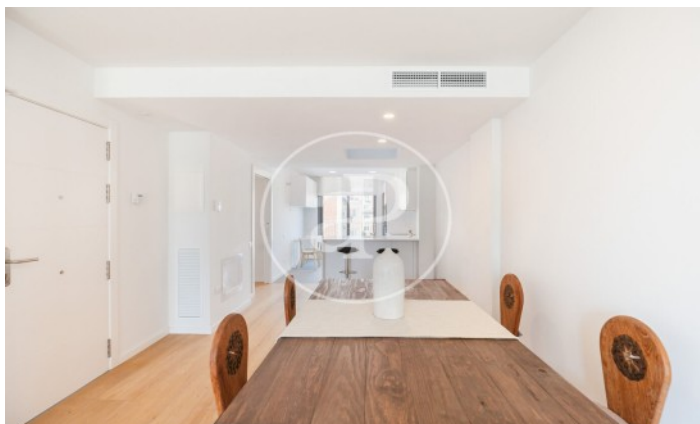
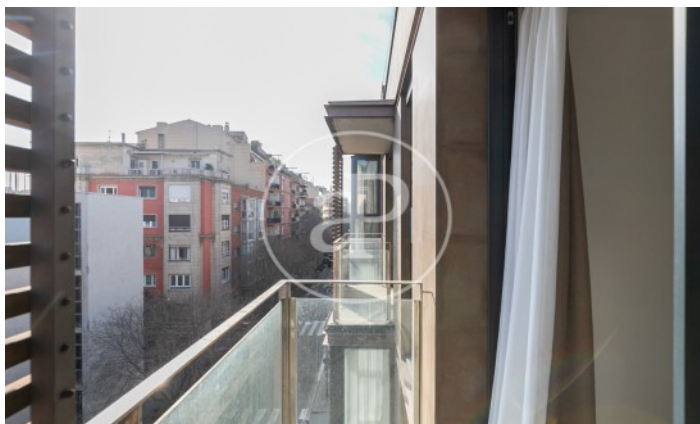
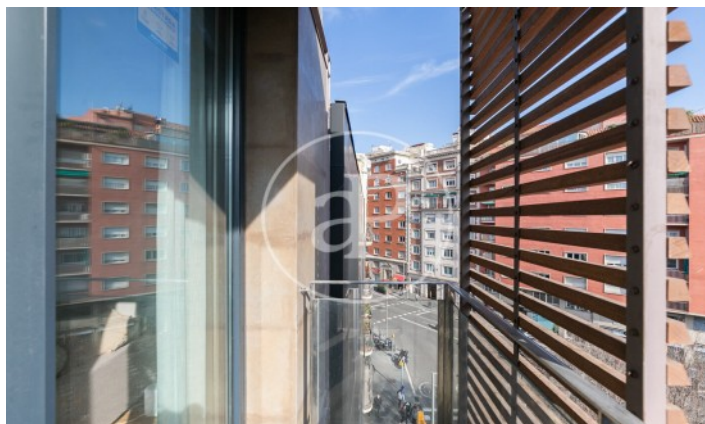
(Sant Gervasi - Galvany)

Ref: ONB1910006



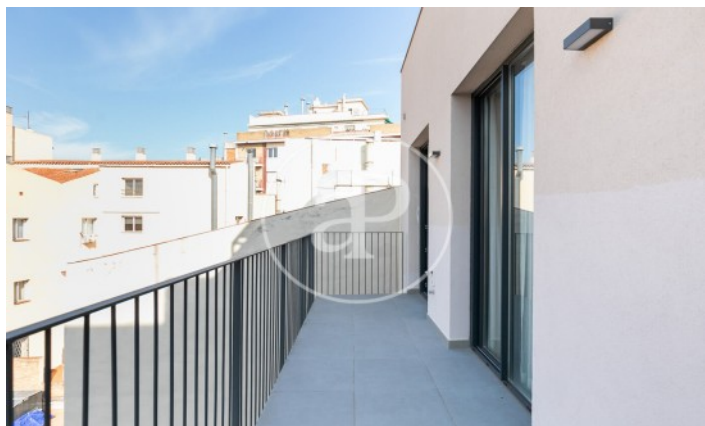
(Sant Gervasi - Galvany)

Ref: ONB1910006



(Sant Gervasi - Galvany)

Ref: ONB1910006



The information about any property is not binding to any offer or contract. Any verbal or written declaration made by aProperties with regards to the value or condition of the property should not be considered accurate or factual. The pictures make reference to some parts of the property at the times that they were taken. The areas, dimensions and distances that are given are approximate and should be checked by the client. The images are computer generated and are just an approximate indication of the real appearance of the property; these may change at any time. The information with regards to the property may also change at any time.

Contact us today for more information or to arrange a viewing

Tel: 93 528 89 08

apropertiesbarcelona@aproperties.es

<https://www.aproperties.es>