

Camp d'en Grassot - Gràcia nova, Barcelona

REF. AB1805013



Apartment for rent close to Parc Güell

Features

✓ Lift

Price

1,100 €

Surface

85 m²

Bedrooms

3

Bathrooms

2



Located in the neighborhood of Gràcia, in a semi pedestrian street, very close to the Parc Güell, surrounded by shops and very well connected by the metropolitan transport network, we find this family flat of 85sqm. This apartment has a sunny living room, a kitchen and a utility room, three bedrooms, one double and two bathrooms. It has hardwood floors, is renovated. The building has a lift.

Contact us,
we will be happy to assist you,
to offer you more details and information.

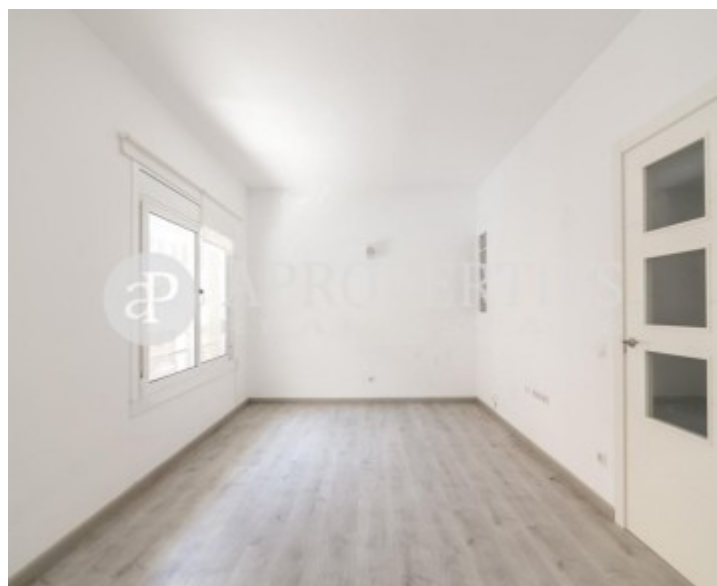
Camp d'en Grassot - Gràcia nova, Barcelona

REF. AB1805013



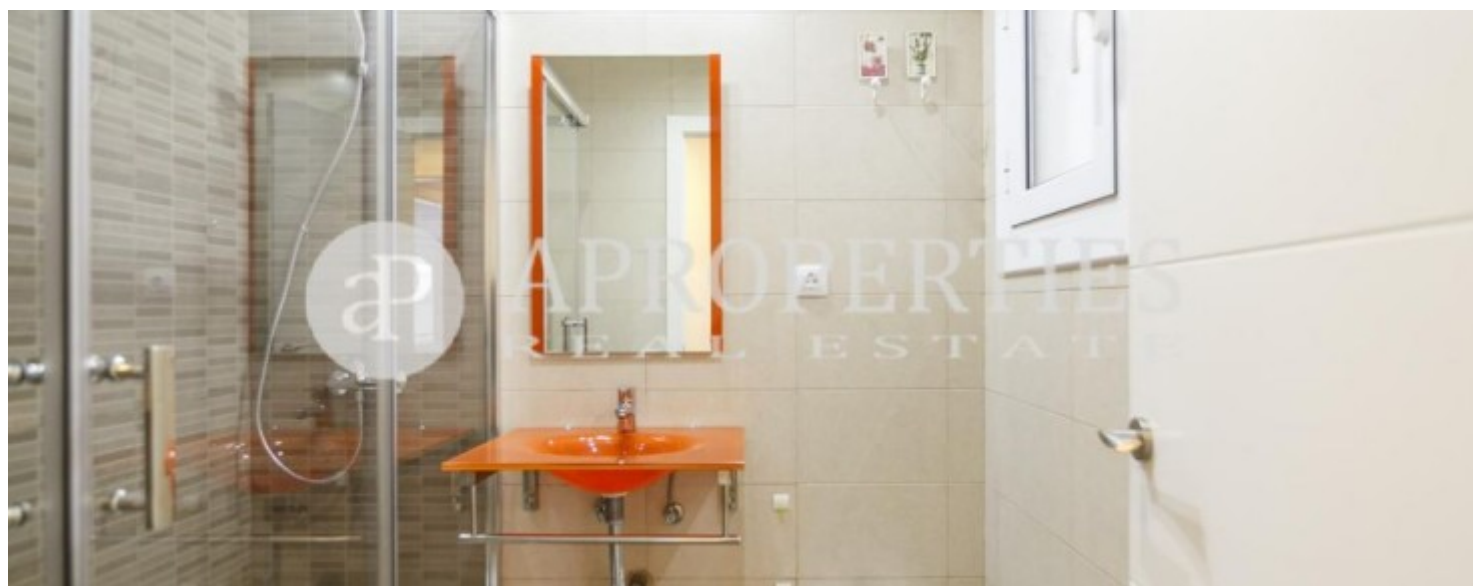
Camp d'en Grassot - Gràcia nova, Barcelona

REF. AB1805013



Camp d'en Grassot - Gràcia nova, Barcelona

REF. AB1805013





APROPERTIES
REAL ESTATE

Paseo de Gracia 85
08008 Barcelona
T. 93 528 89 08
www.aproperties.es

Camp d'en Grassot - Gràcia nova, Barcelona

REF. AB1805013



The information about any property is not binding to any offer or contract. Any verbal or written declaration made by aProperties with regards to the value or condition of the property should not be considered accurate or factual. The pictures make reference to some parts of the property at the times that they were taken. The areas, dimensions and distances that are given are approximate and should be checked by the client. The images are computer generated and are just an approximate indication of the real appearance of the property; these may change at any time. The information with regards to the property may also change at any time.



For **more information** or
to make an appointment

apropertiesbarcelona@aproperties.es
Tel: 93 528 89 08
www.aproperties.es