



(El Poblenou)

Ref: ONB2505003



New Development on Llull Street

Located in one of Barcelona's most promising areas, this new development on Llull Street, in the heart of Poblenou, combines contemporary design, energy efficiency, and a privileged location next to the 22@ tech district. The building has been designed with modern lines and high-quality materials, offering bright and functional homes with top-tier finishes. It features 3-bedroom, 2-bathroom flats, a penthouse with a private terrace, large windows, and an orientation that ensures excellent natural light. This project integrates perfectly into the urban fabric of Poblenou, a neighborhood that has preserved its industrial and creative character while becoming one of the most dynamic and sought-after areas to live or invest in the city.

Barcelona / El Poblenou

Unit 1 1

Completion Q1 2025

FEATURES

Surface 87 m² / 2 m² terrace

3 Rooms

2 Toilets

- ✓ Views
- ✓ Heating
- ✓ AACC
- ✓ Terrace
- ✓ Lift

Price 595,000 €

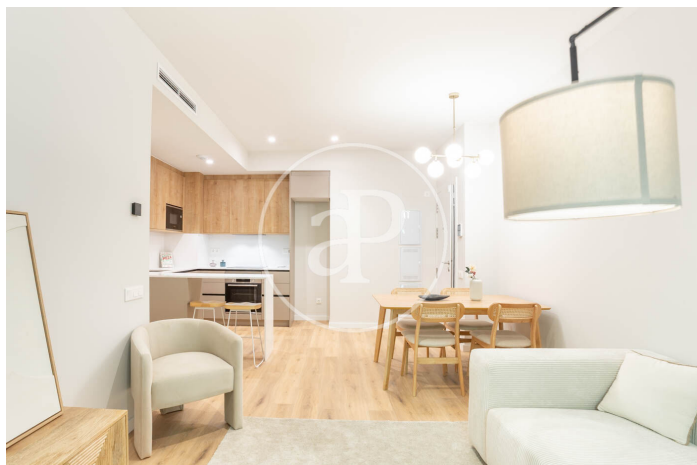
(El Poblenou)

Ref: ONB2505003



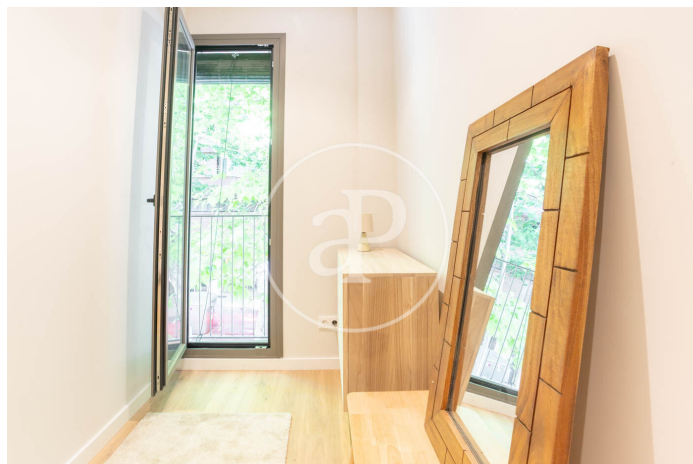
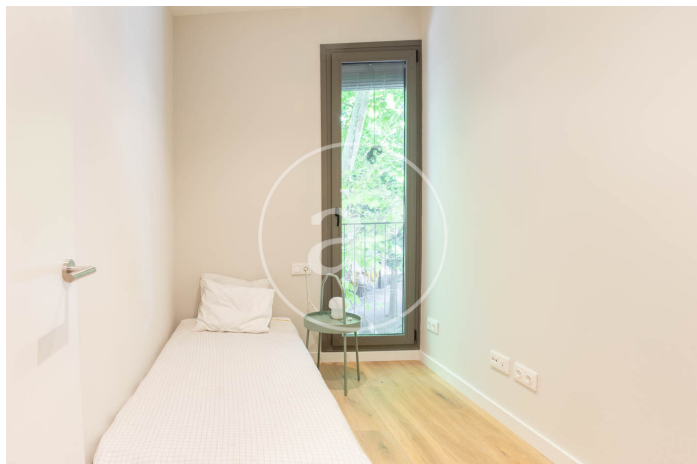
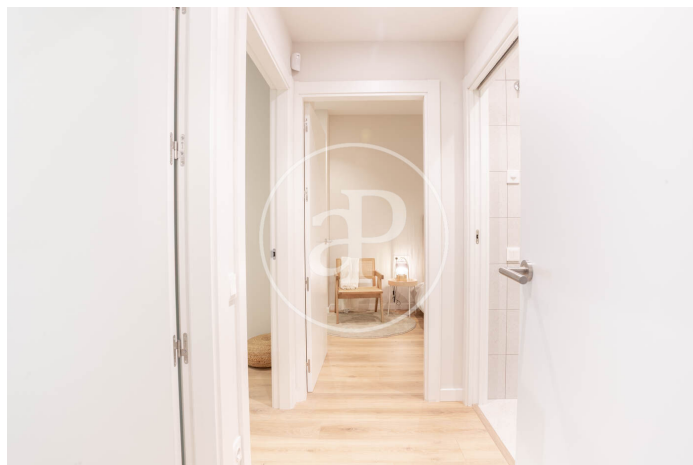
(El Poblenou)

Ref: ONB2505003



(El Poblenou)

Ref: ONB2505003



The information about any property is not binding to any offer or contract. Any verbal or written declaration made by aProperties with regards to the value or condition of the property should not be considered accurate or factual. The pictures make reference to some parts of the property at the times that they were taken. The areas, dimensions and distances that are given are approximate and should be checked by the client. The images are computer generated and are just an approximate indication of the real appearance of the property; these may change at any time. The information with regards to the property may also change at any time.

Contact us today for more information or to arrange a viewing

Tel: 93 528 89 08 apropertiesbarcelona@aproperties.es <https://www.aproperties.es>