

El Poblenou, Barcelona

REF. AB2603052

# Duplex for Rent in Poblenou

## Features

Surface

**58 m<sup>2</sup>**

Bedrooms

**2**

Bathroom

**1**

✓ AACC

✓ Lift

Price

**2,500 €**



## Long-term rental, available now.

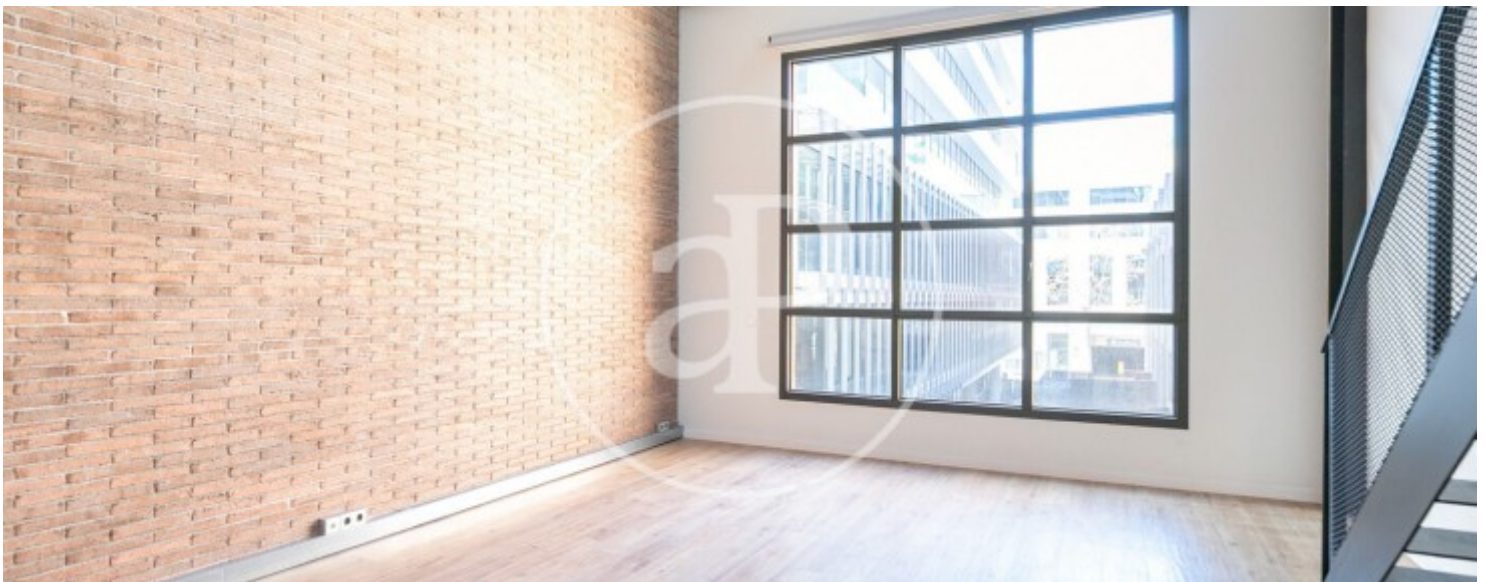
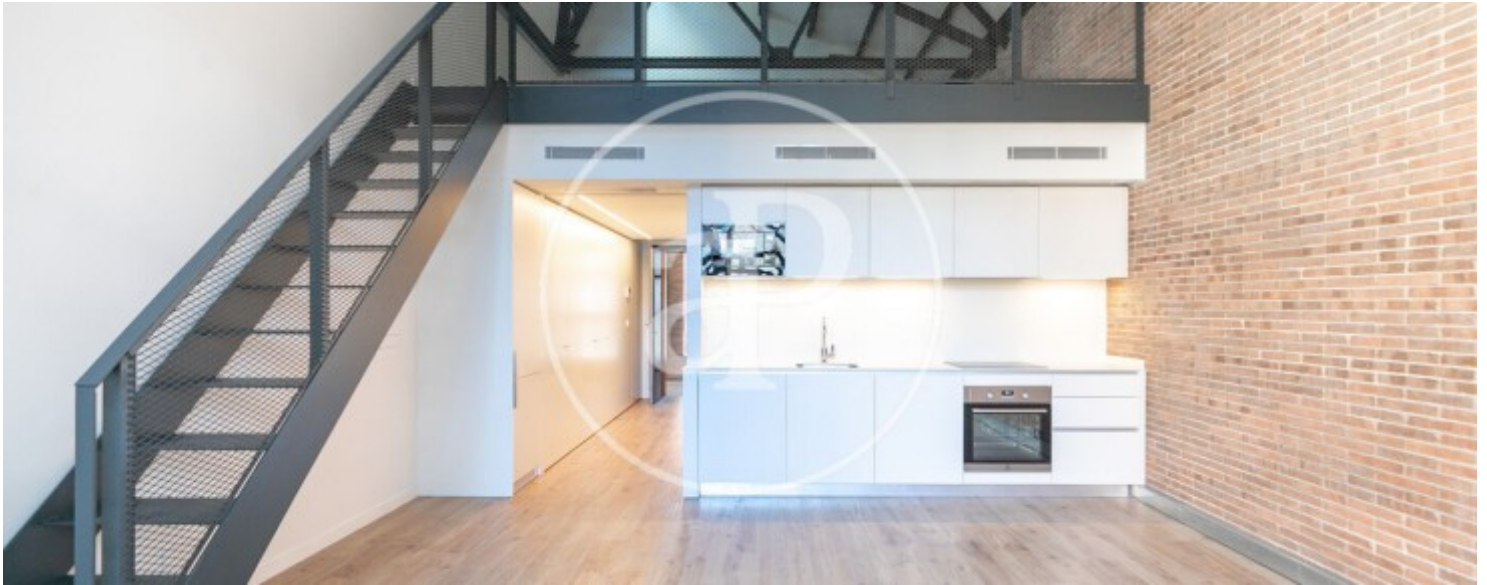
Imagine living in the heart of Poblenou, just two streets from the sea, in a space where 19th-century industrial heritage blends seamlessly with contemporary luxury. This exclusive loft-style duplex is located in the emblematic former DESLITE factory, an architectural gem transformed into a unique living experience in Barcelona. With 80 m<sup>2</sup> flooded with natural light through large windows and glass ceilings, the property is distributed over two levels designed for absolute comfort. The main floor features a cozy living area and a versatile 8.7 m<sup>2</sup> bedroom, while the upper level opens into a 22 m<sup>2</sup> space ideal as a master

suite or a creative studio full of character. What truly sets this home apart is its commitment to sustainability and wellbeing. With BREEAM certification and an A+ energy rating, it offers minimal energy consumption and exceptional thermal comfort through underfloor heating and aerothermal systems. Every detail has been carefully considered: high-end Electrolux appliances, a Siber air renewal system, and integrated home automation. Porcelain wood-effect flooring, custom built-in wardrobes, and a reinforced door complete the impeccable interior. The property also includes a private basement...

**Contact us,**  
we will be happy to assist you,  
to offer you more details and information.

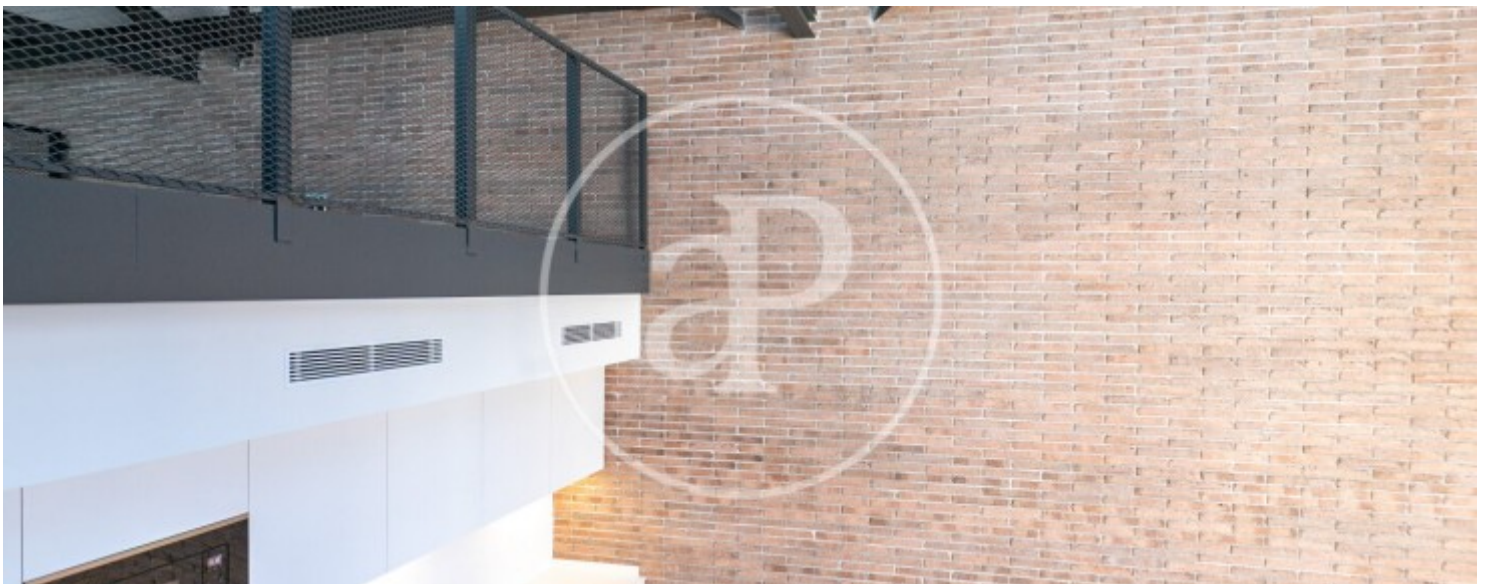
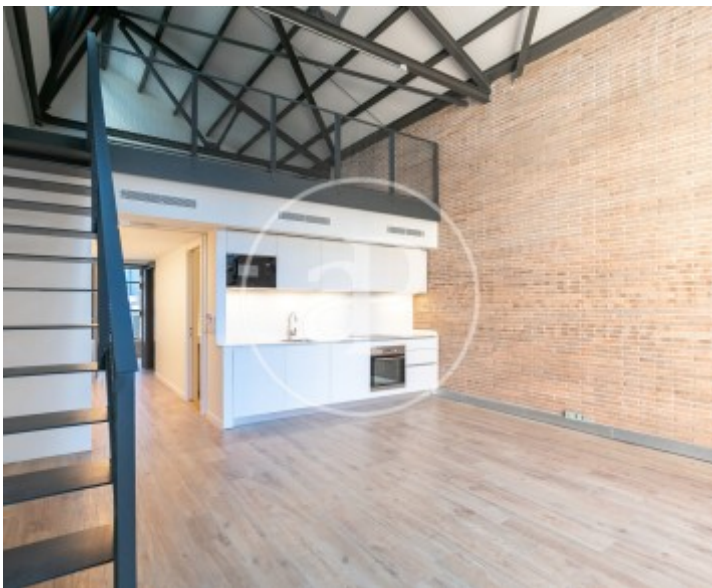
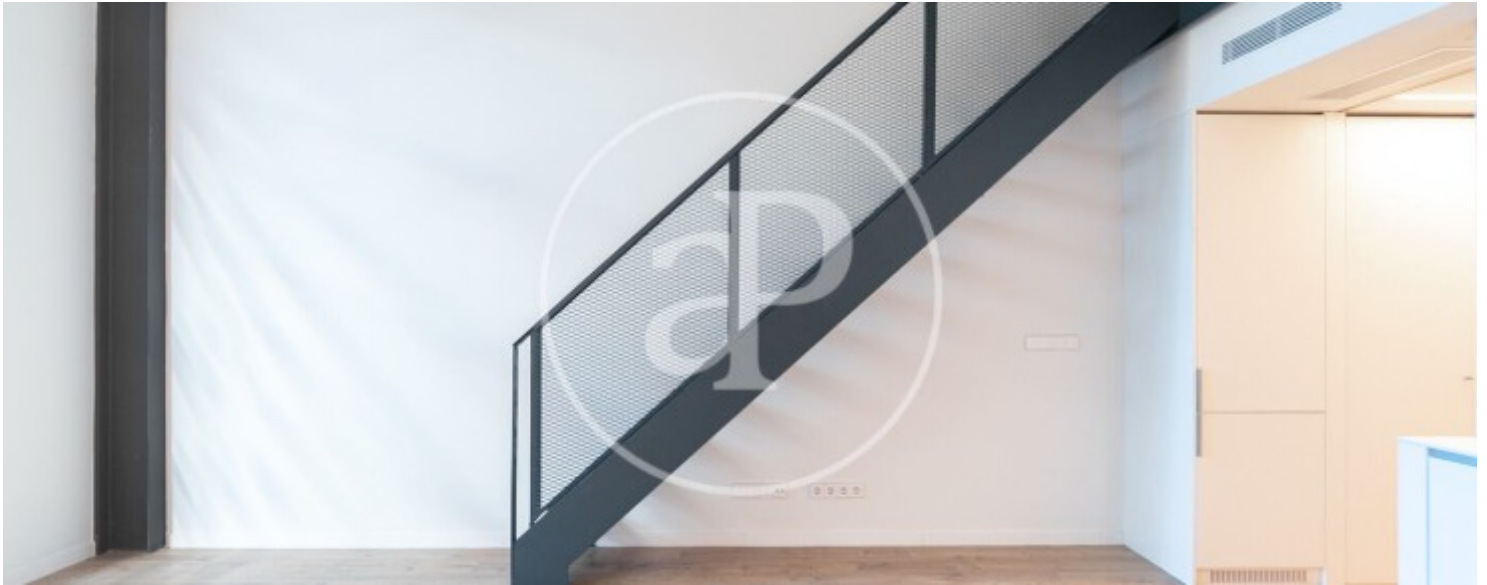
El Poblenou, Barcelona

REF. AB2603052



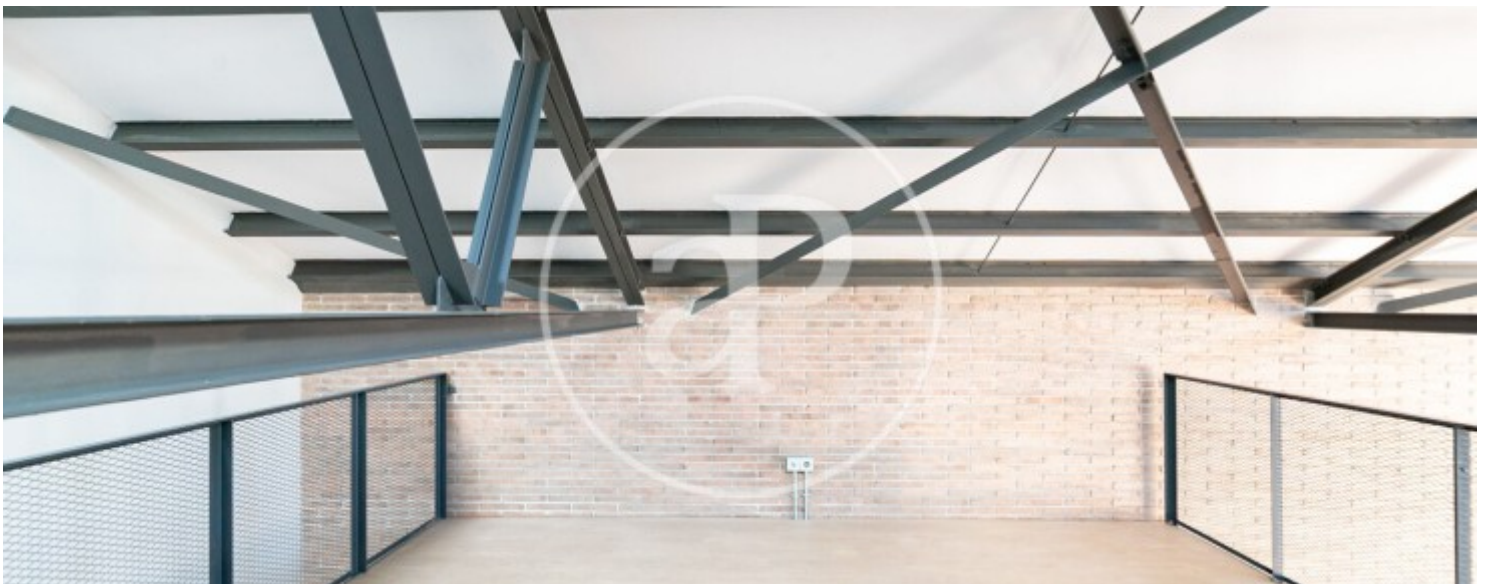
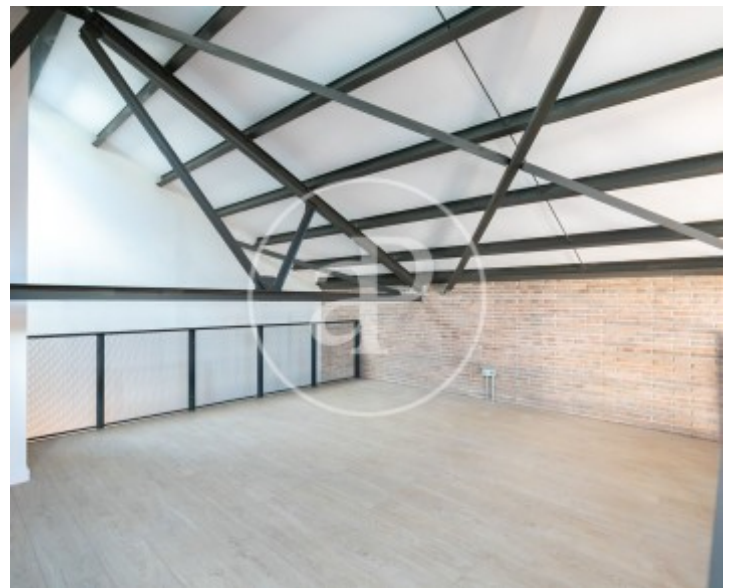
El Poblenou, Barcelona

REF. AB2603052



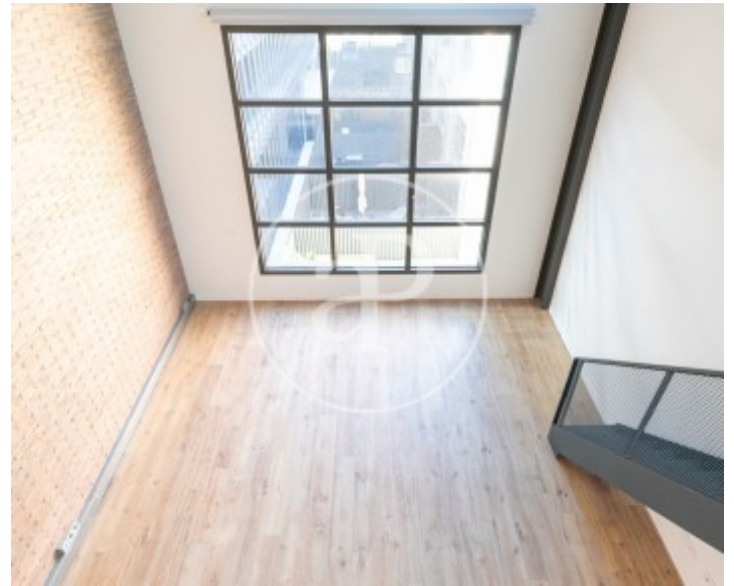
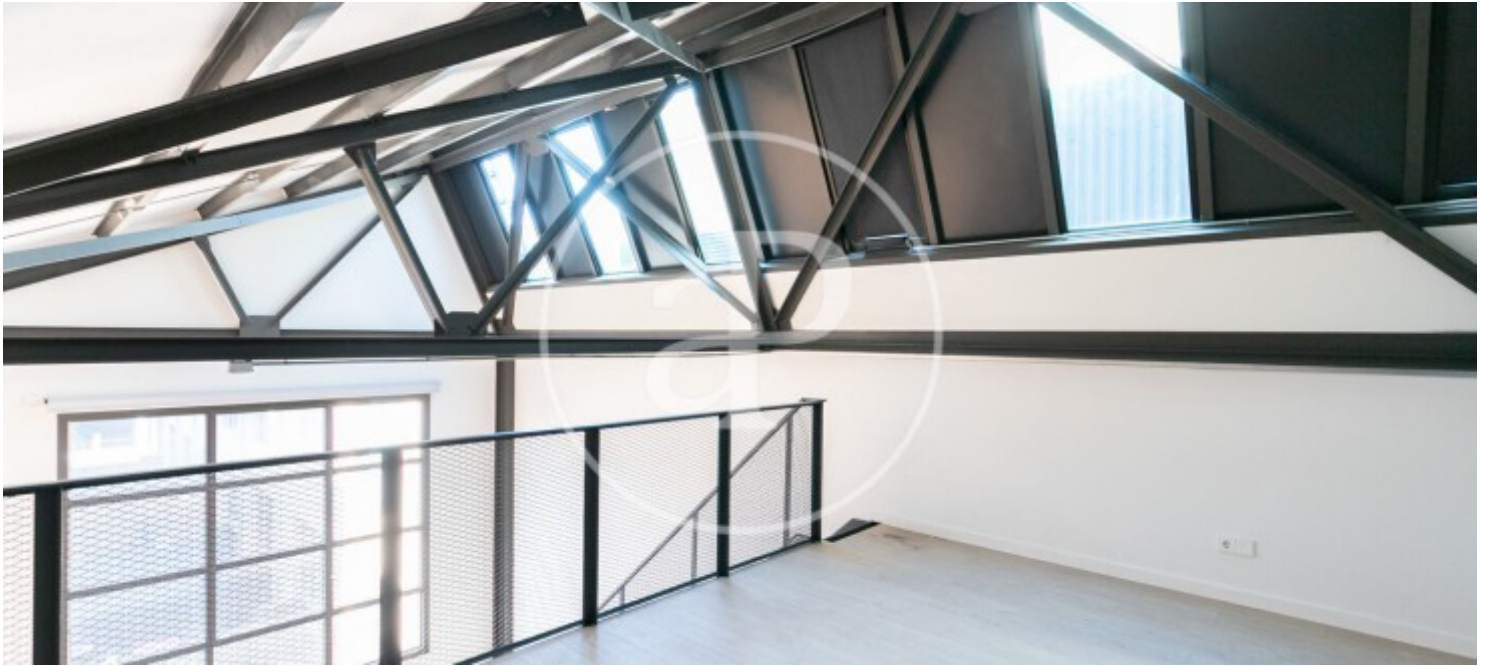
El Poblenou, Barcelona

REF. AB2603052



El Poblenou, Barcelona

REF. AB2603052



The information about any property is not binding to any offer or contract. Any verbal or written declaration made by aProperties with regards to the value or condition of the property should not be considered accurate or factual. The pictures make reference to some parts of the property at the times that they were taken. The areas, dimensions and distances that are given are approximate and should be checked by the client. The images are computer generated and are just an approximate indication of the real appearance of the property; these may change at any time. The information with regards to the property may also change at any time.

For **more information** or  
to make an appointment

[apropertiesbarcelona@aproperties.es](mailto:apropertiesbarcelona@aproperties.es)  
Tel: 93 528 89 08  
[www.aproperties.es](http://www.aproperties.es)