



El Poblenou, Barcelona

REF. VB2210029

Loft for sale in Poblenou

Features

- ✓ Views
- ✓ Heating
- ✓ Lift
- ✓ Concierge

Surface

183 m²

Bedrooms

2

Bathrooms

2

Price

550,000 €



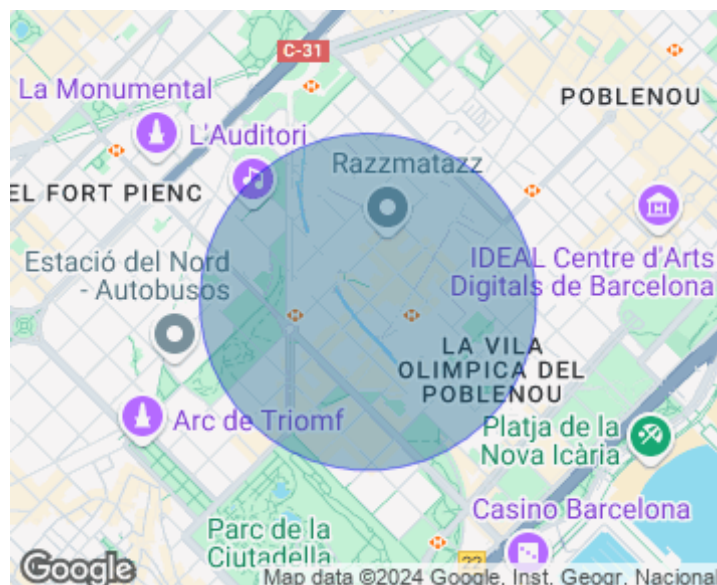
Industrial premises located in the 22@ district, renovated as a home, the finishes of the property are of high quality following the industrial look of its surroundings, located on the sixth floor of the building and with stunning views of Poblenou and Besós. The property has two floors. On the floor are the kitchen (space with a large bar cabinet), the bar serves for cooking, as a table, bookcase ...; and the leisure and work area is next to the windows. The center is clear. It has 1 double bedroom type cylinder with a bathroom en suite, 1 small bedroom type cylinder also and 2 bathrooms (1 of them in the suite). It has two storage areas on the floor. The loft has a biomass stove and 4 ceiling fans. Very versatile with mobile furniture. The height of the floorboard is the same as a chair (45 cm)

which allows you to sit on it. Next to the windows we have a veranda formed by a raised bed and an armchair. The floor is made of Galician pine wood, on the upper part and microcement on the lower part. The 22@ district is a neighborhood located in the most industrial areas of Poblenou where innovation, creativity, design and technology are the engine that has replaced the old factories. Project carried out by a renowned architectural firm.

Contact us,
we will be happy to assist you,
to offer you more details and information.

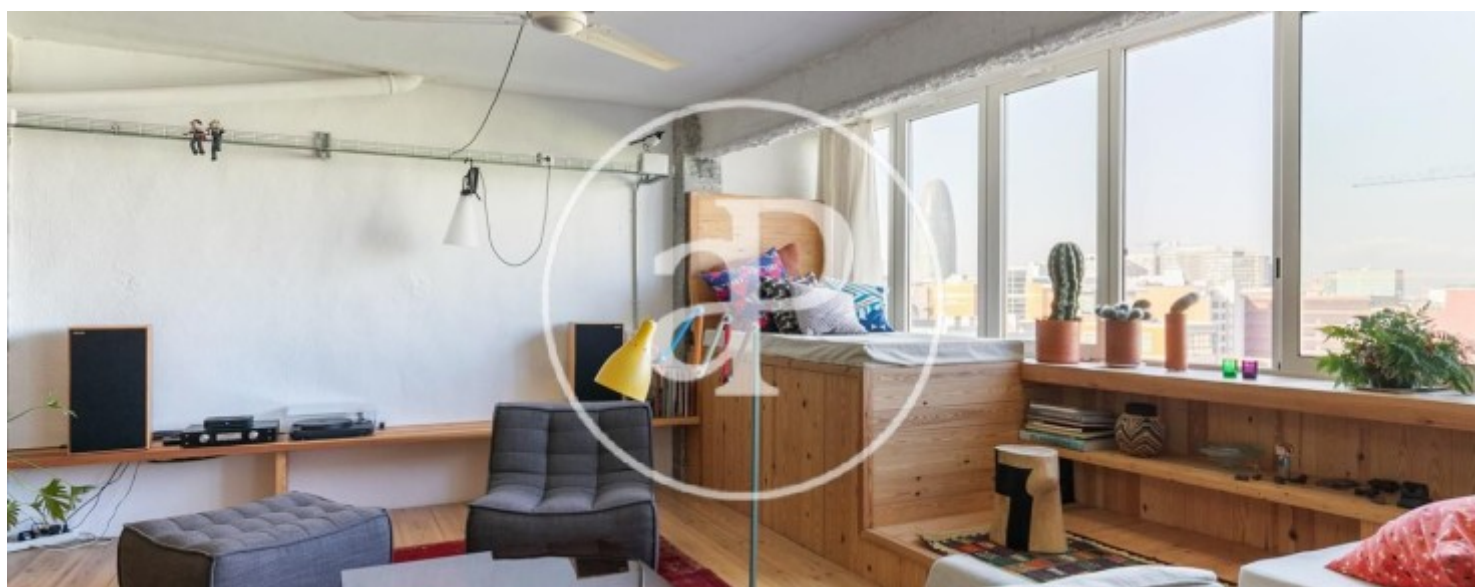
El Poblenou, Barcelona

REF. VB2210029



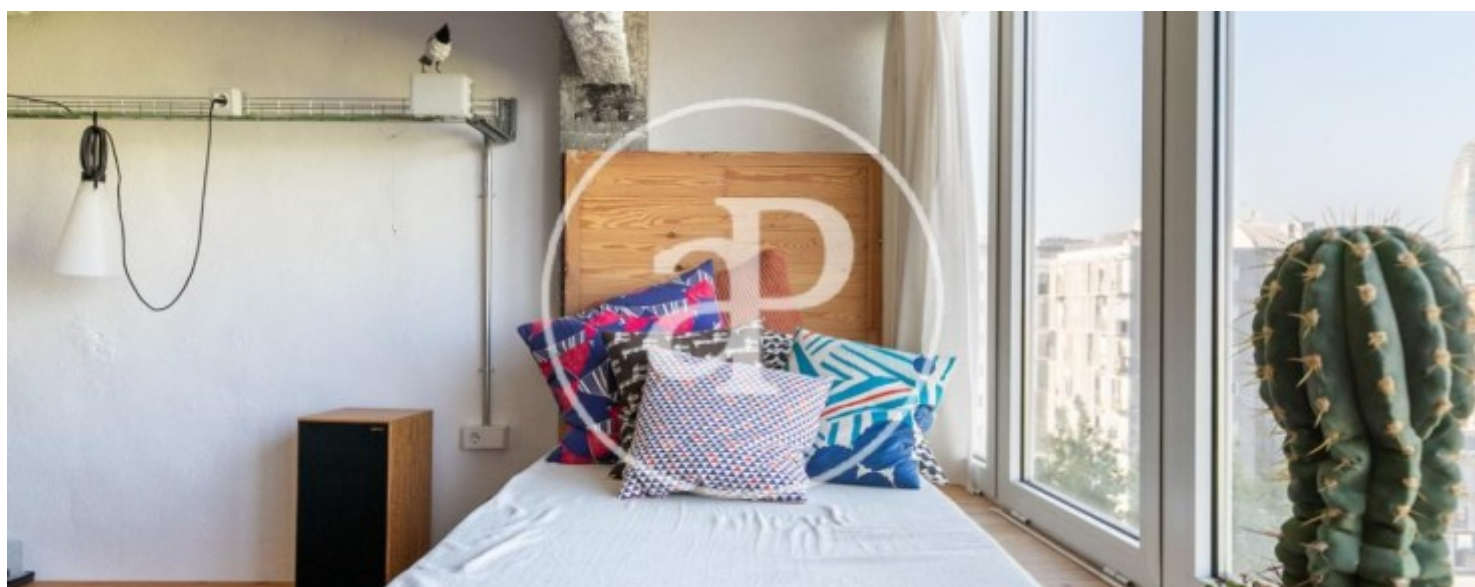
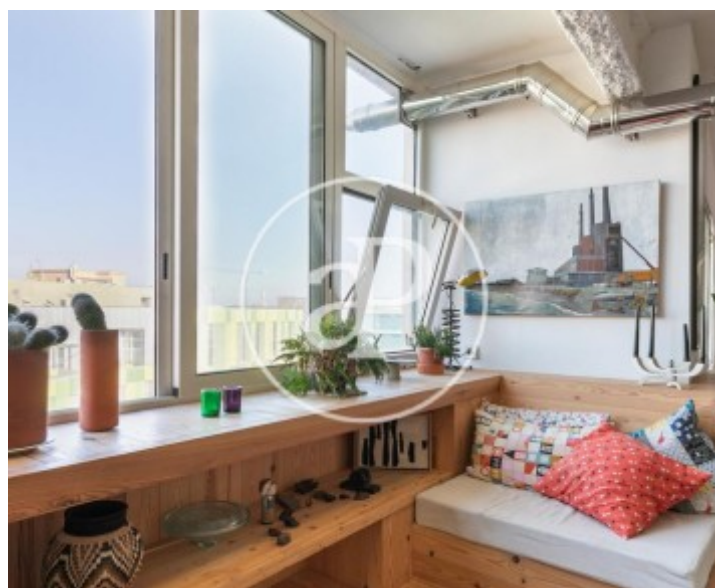
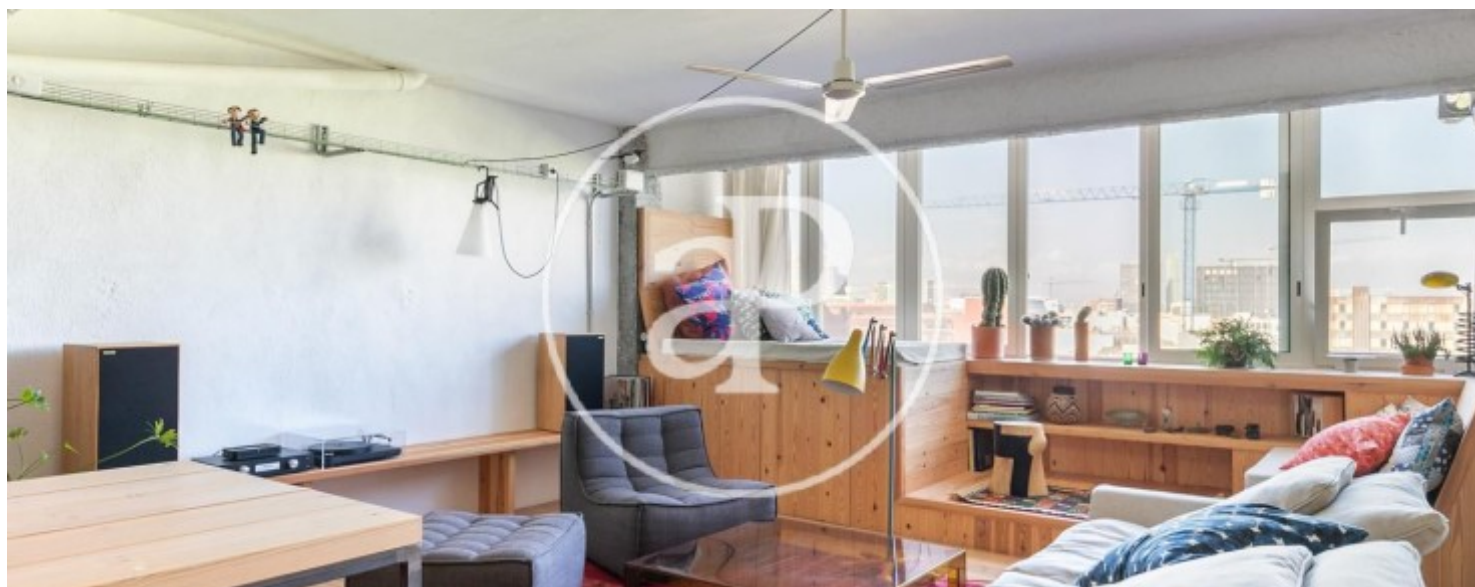
El Poblenou, Barcelona

REF. VB2210029



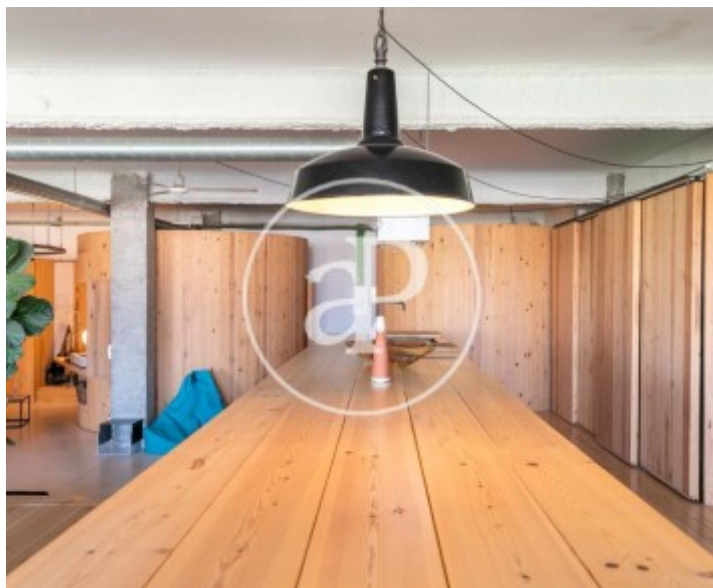
El Poblenou, Barcelona

REF. VB2210029



El Poblenou, Barcelona

REF. VB2210029



The information about any property is not binding to any offer or contract. Any verbal or written declaration made by aProperties with regards to the value or condition of the property should not be considered accurate or factual. The pictures make reference to some parts of the property at the times that they were taken. The areas, dimensions and distances that are given are approximate and should be checked by the client. The images are computer generated and are just an approximate indication of the real appearance of the property; these may change at any time. The information with regards to the property may also change at any time.

For **more information** or
to make an appointment

apropertiesbarcelona@aproperties.es
Tel: 93 528 89 08
www.aproperties.es