

El Poble Sec, Barcelona

REF. AB2511040-1

# Apartment for rent in Poble Sec

## Features

- ✓ Heating
- ✓ AACC
- ✓ Furnished
- ✓ Lift

Surface

**65 m<sup>2</sup>**

Bedroom

**1**

Bathrooms

**2**

Price

**1,650 €**



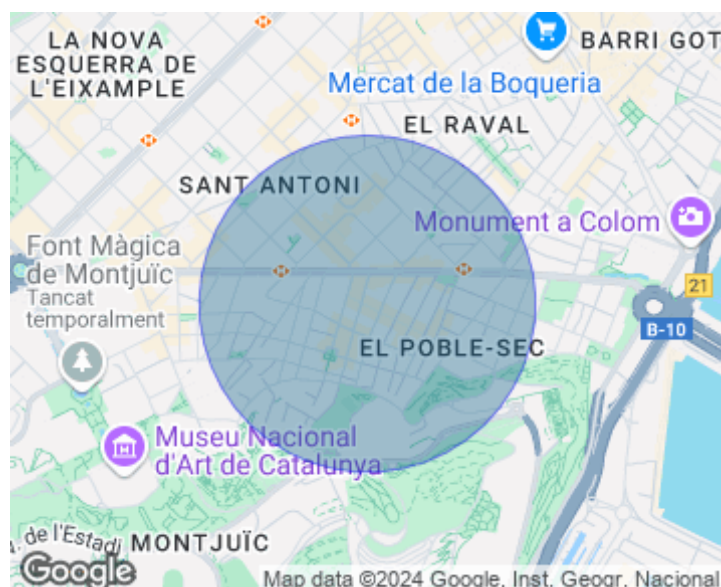
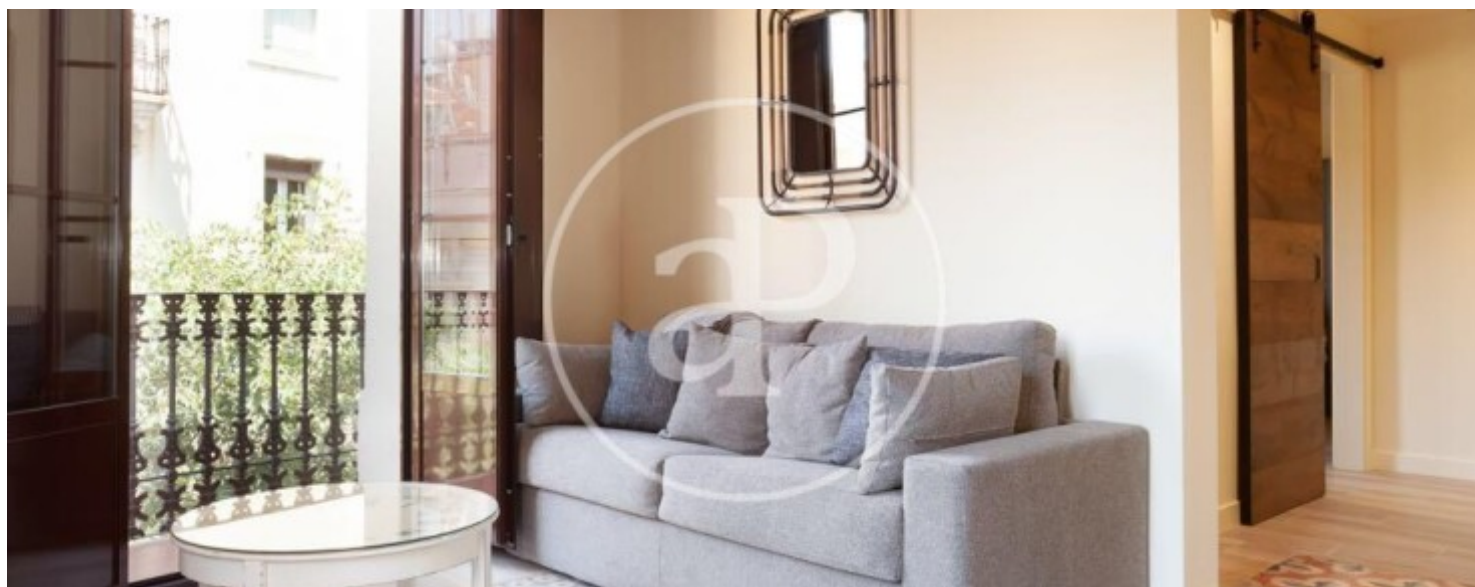
AVAILABLE FROM DECEMBER 15TH Located in the Poble Sec neighborhood, a few steps from Avenida Paral·lel, surrounded by restaurants, shops, public transport, and very well connected to the city's access roads, we find this charming, fully furnished and equipped 65 m<sup>2</sup> apartment. The day area consists of a bright, corner living-dining room with a sofa bed and access to two balconies, an open-plan American kitchen fully equipped with high-end appliances and furniture, and a full bathroom with a shower. The night area has one double en-suite bedroom with access to a balcony and a private bathroom with a shower. It features parquet floors, ducted air conditioning and heating, and international TV channels. The building has an elevator and security cameras. The purpose of the contract is

temporary. The actual furniture may not correspond exactly to the photographs shown in this advertisement.\* In compliance with Law 12/2023 and Law 18/2007, we inform that Index of R.P.LL: 12,07 € / m<sup>2</sup> State reference price 1.200,00 € Rent of the last lease contract: 1.600,00 €

**Contact us,**  
we will be happy to assist you,  
to offer you more details and information.

El Poble Sec, Barcelona

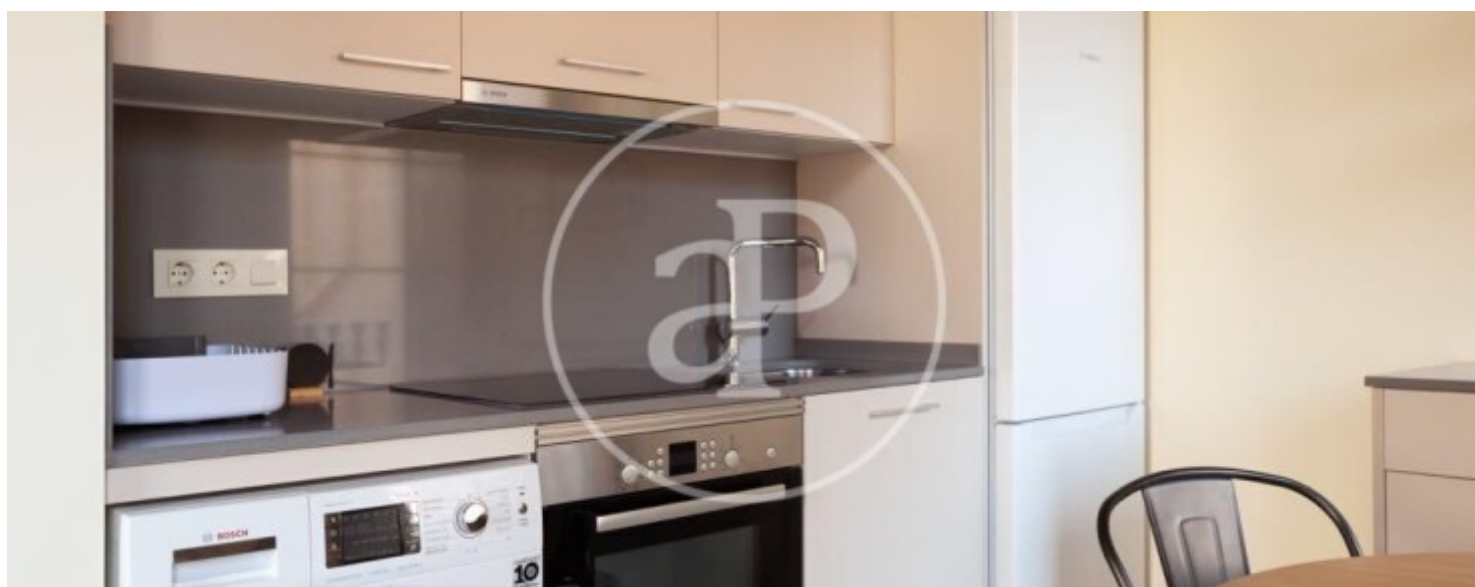
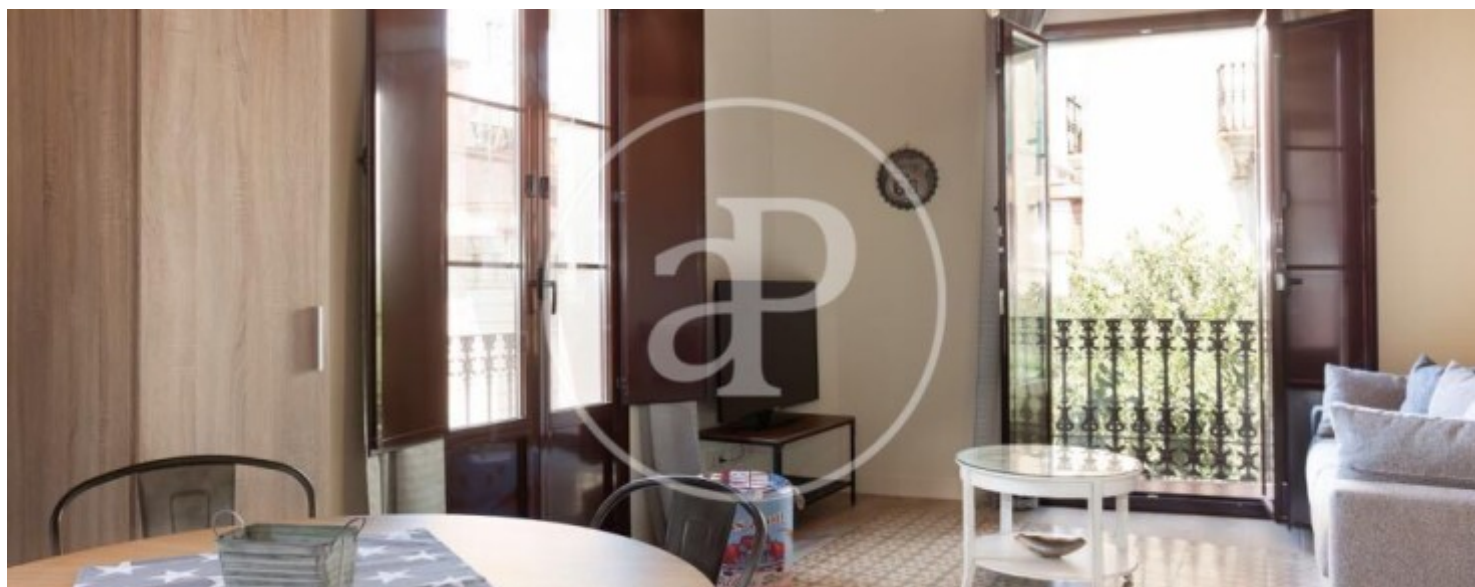
REF. AB2511040-1





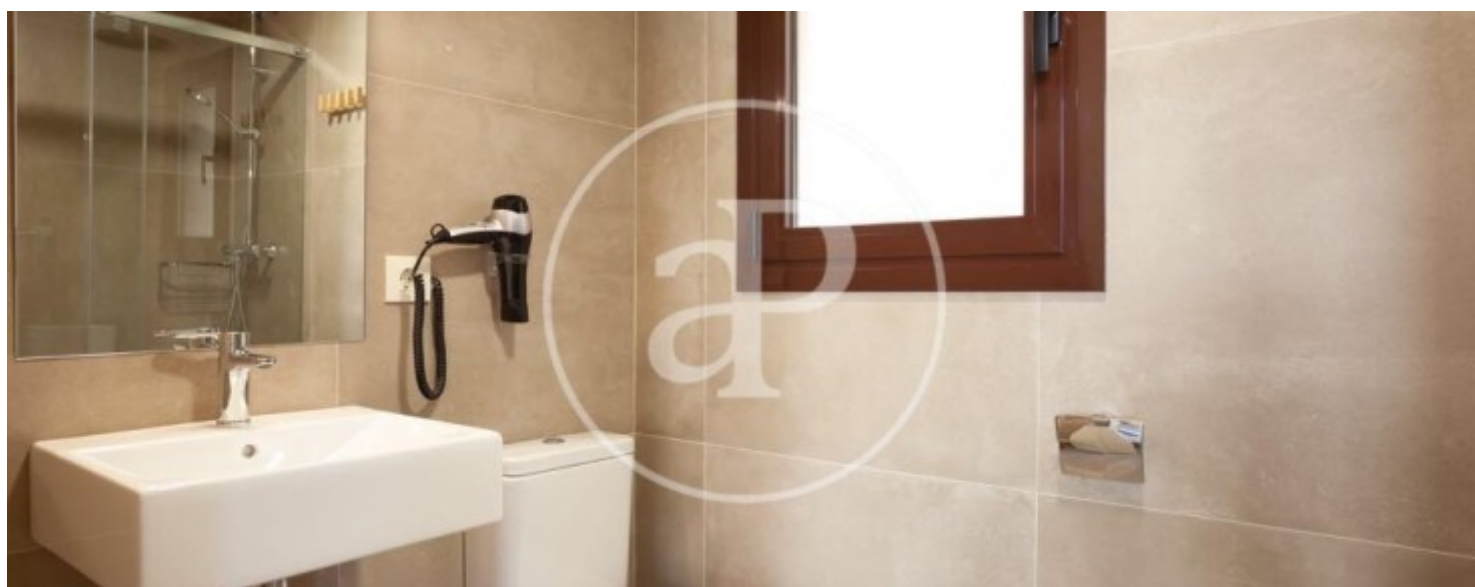
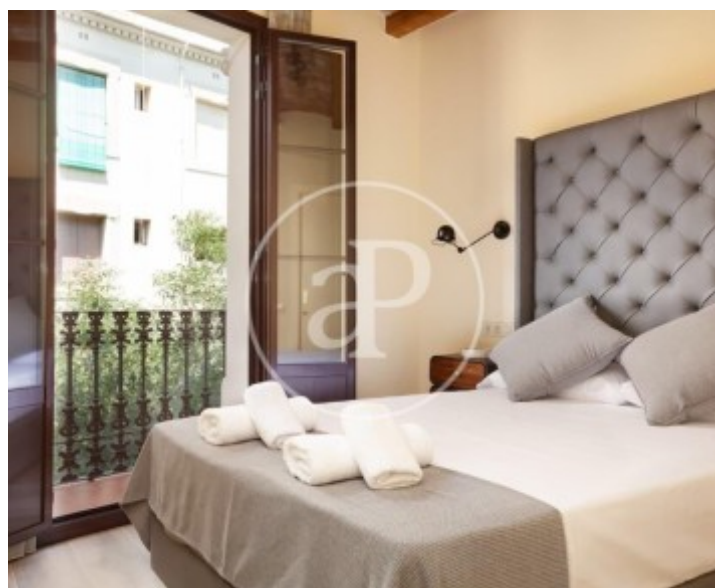
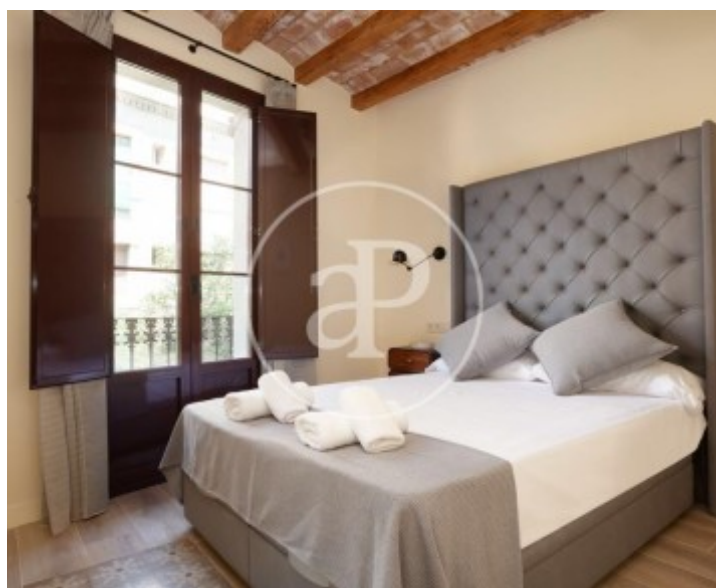
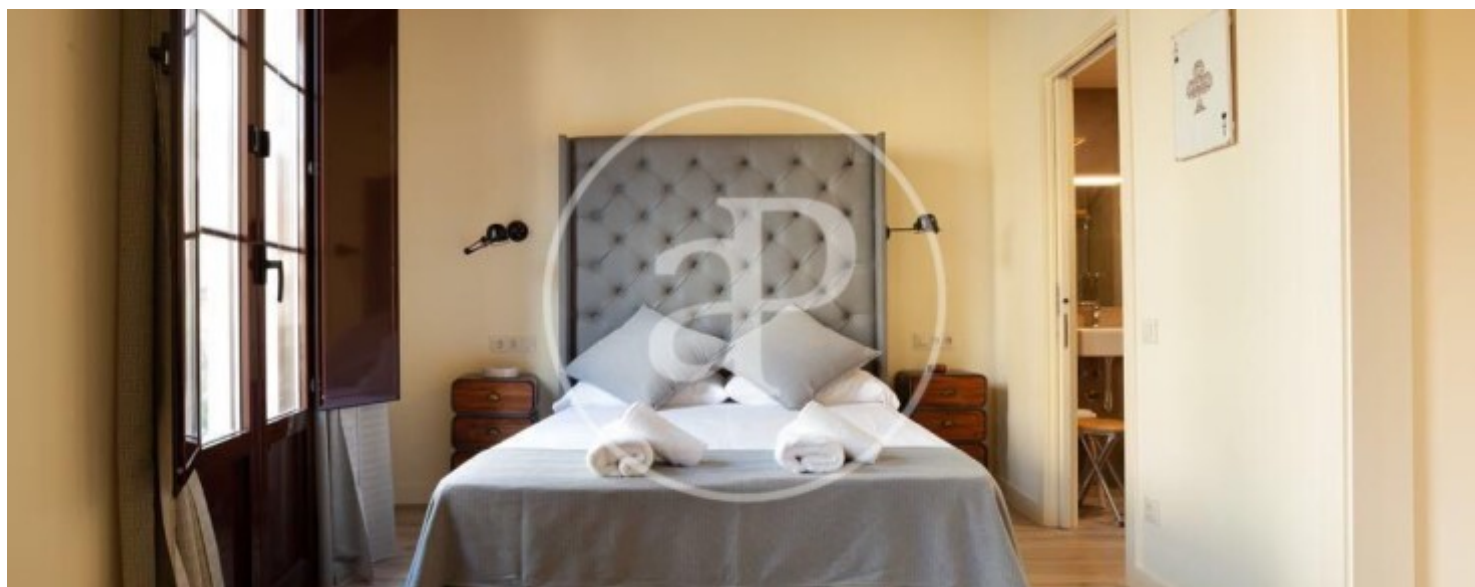
El Poble Sec, Barcelona

REF. AB2511040-1



El Poble Sec, Barcelona

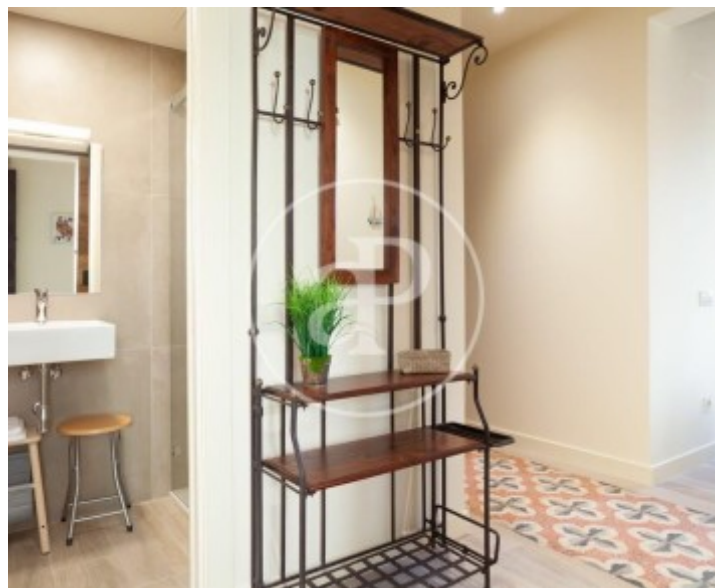
REF. AB2511040-1





El Poble Sec, Barcelona

REF. AB2511040-1



The information about any property is not binding to any offer or contract. Any verbal or written declaration made by aProperties with regards to the value or condition of the property should not be considered accurate or factual. The pictures make reference to some parts of the property at the times that they were taken. The areas, dimensions and distances that are given are approximate and should be checked by the client. The images are computer generated and are just an approximate indication of the real appearance of the property; these may change at any time. The information with regards to the property may also change at any time.

For **more information** or  
to make an appointment

[apropertiesbarcelona@aproperties.es](mailto:apropertiesbarcelona@aproperties.es)  
Tel: 93 528 89 08  
[www.aproperties.es](http://www.aproperties.es)