

El Gòtic, Barcelona

REF. VB2501019

# Penthouse for sale in the Gothic Quarter

## Features

- ✓ Views
- ✓ Heating
- ✓ Boxroom
- ✓ AACC
- ✓ Terrace

Surface

**26 m<sup>2</sup>**

Bedroom

**1**

Bathroom

**1**

Price

**239,000 €**



**In the Gothic Quarter, next to the Basilica of Santa Maria del Pi and the Liceu metro station, we find this beautiful renovated penthouse in a well-maintained building with no elevator.**

The apartment, 26?m<sup>2</sup> in size, has been completely renovated with top-quality materials and finishes. It features a modern and functional design that, combined with the original Volta Catalana, evokes the charm of its historical era. The price also includes two additional spaces of 12?m<sup>2</sup> and 5?m<sup>2</sup> on the same landing, registered as storage rooms, fully functional and usable, bringing the total to 43?m<sup>2</sup>. The home consists of a spacious living-dining area with a large window

and access to a small terrace, an open-plan fully equipped kitchen, a double bedroom with study area and built-in wardrobe, and a bathroom with shower. It features heating and air conditioning via splits, parquet flooring, double-glazed windows, and a full lighting system in all rooms. In addition to the private terrace, there is access to a communal rooftop terrace on the same floor, with views of the Basilica of Santa Maria del Pi, equipped with sun loungers and dining tables — a perfect spot to enjoy the sun all year round. A great opportunity to acquire a charming...

**Contact us,**  
we will be happy to assist you,  
to offer you more details and information.

El Gòtic, Barcelona

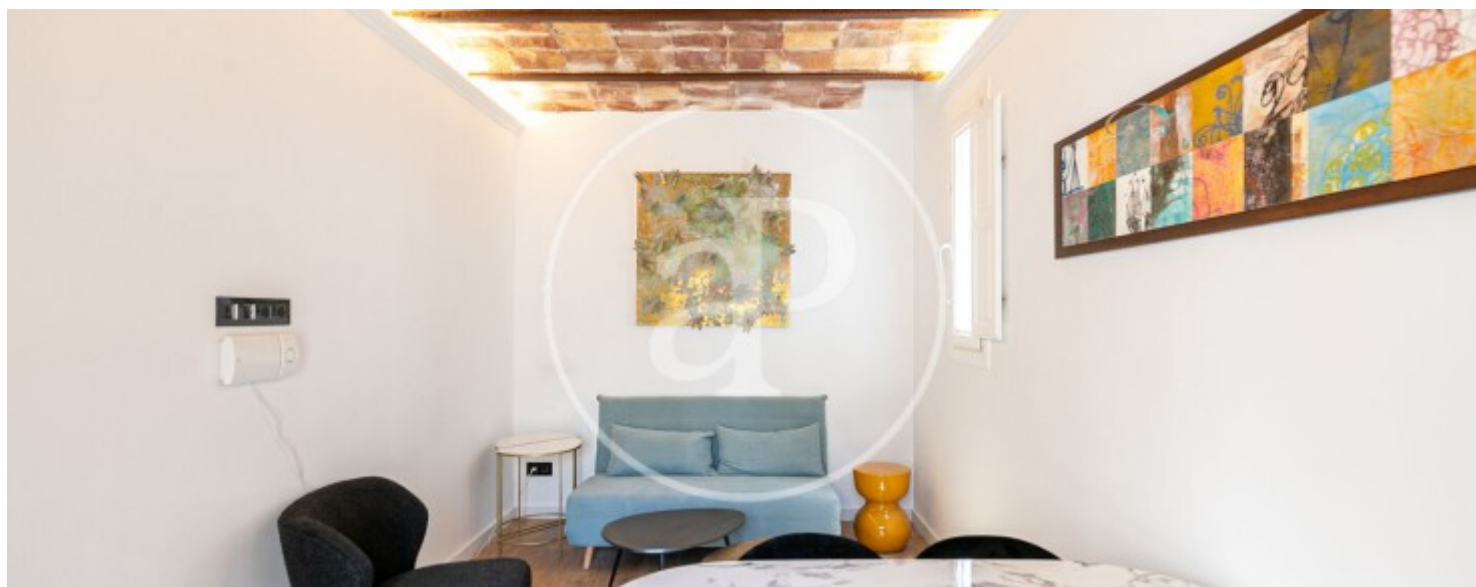
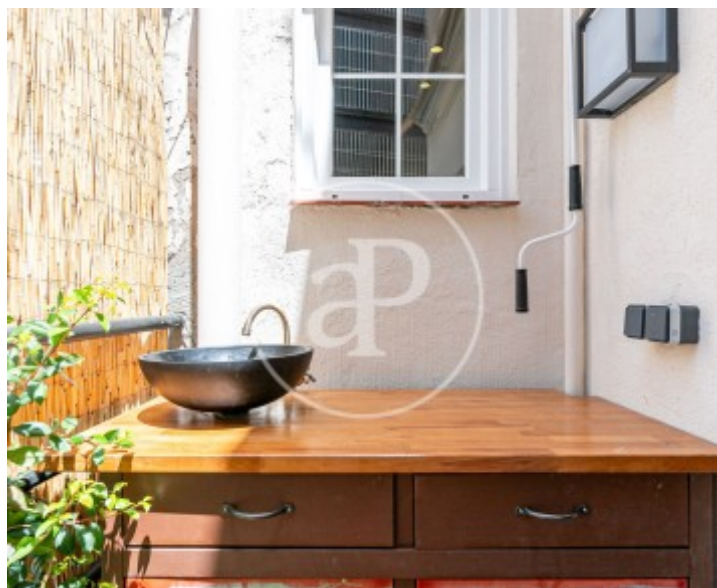
REF. VB2501019





El Gòtic, Barcelona

REF. VB2501019



El Gòtic, Barcelona

REF. VB2501019





El Gòtic, Barcelona

REF. VB2501019



The information about any property is not binding to any offer or contract. Any verbal or written declaration made by aProperties with regards to the value or condition of the property should not be considered accurate or factual. The pictures make reference to some parts of the property at the times that they were taken. The areas, dimensions and distances that are given are approximate and should be checked by the client. The images are computer generated and are just an approximate indication of the real appearance of the property; these may change at any time. The information with regards to the property may also change at any time.

For **more information** or  
to make an appointment

[apropertiesbarcelona@aproperties.es](mailto:apropertiesbarcelona@aproperties.es)  
Tel: 93 528 89 08  
[www.aproperties.es](http://www.aproperties.es)