

El Camp de l'Arpa, Barcelona

REF. VB2301037

3-bedroom duplex apartment in Camp de l'Arpa

Features

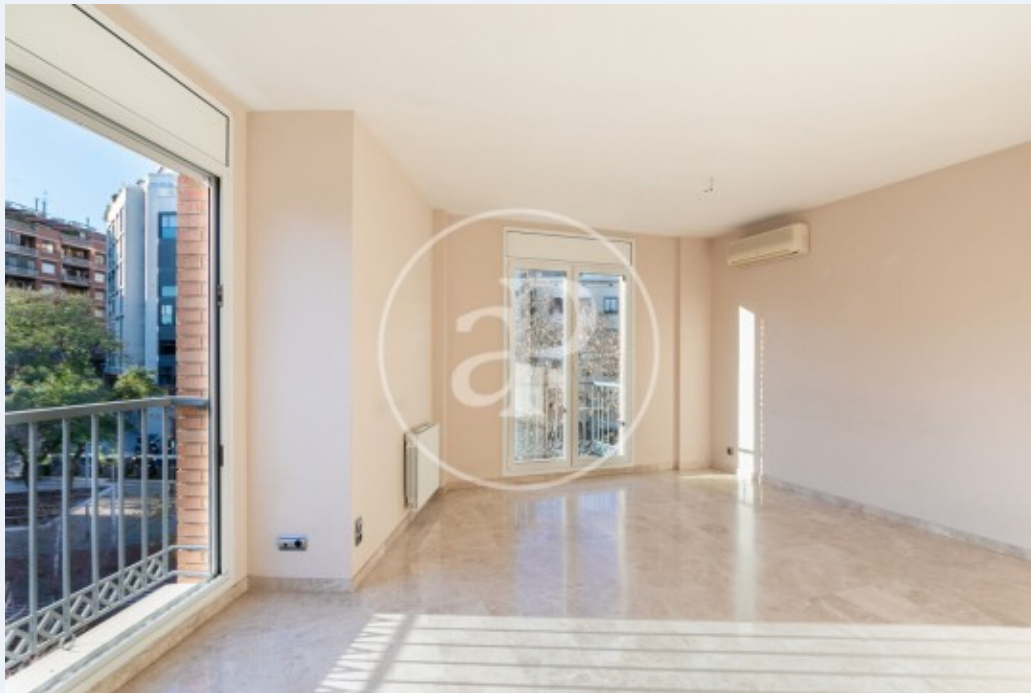
- ✓ Views
- ✓ Heating
- ✓ AACC
- ✓ Lift

Price
510,000 €

Surface
112 m²

Bedrooms
3

Bathrooms
2



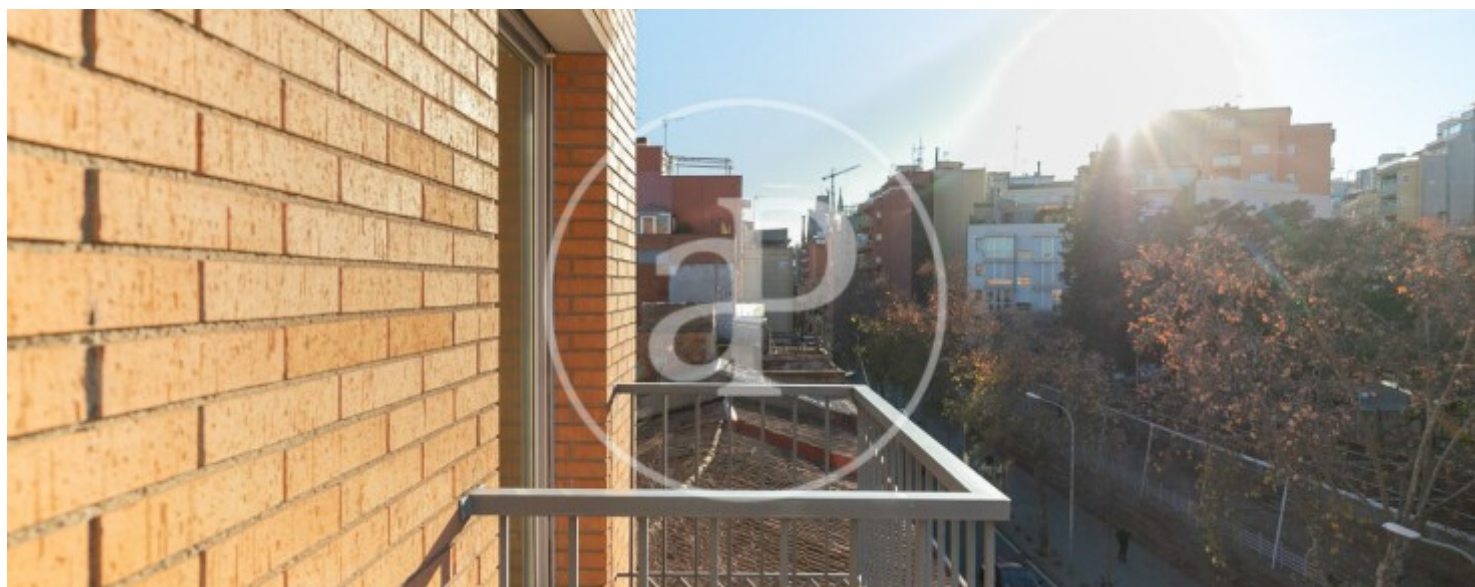
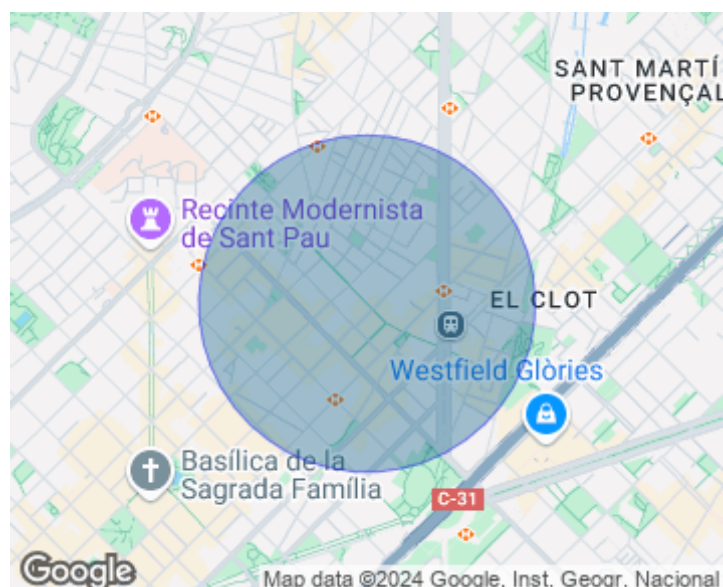
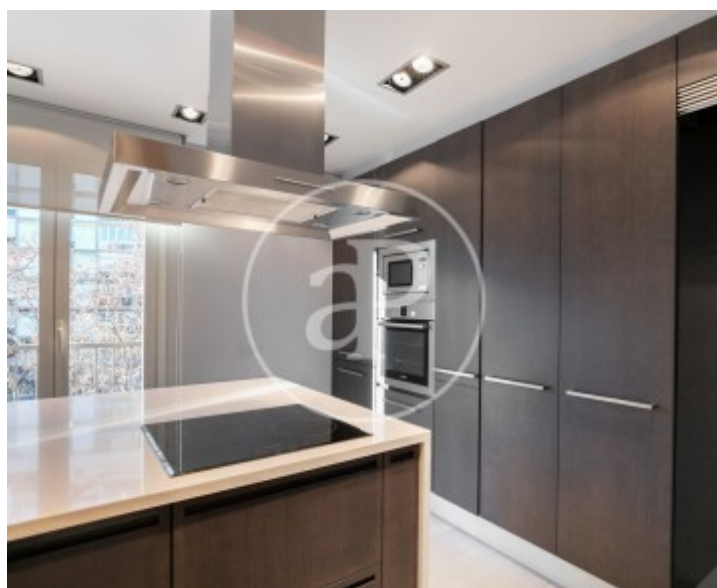
Located in the Camp de l'Arpa area, near the Sagrada Família, the Sant Pau hospital grounds and the new rehabilitated area of Glories, in one of the most sought-after streets in the area, we find this spacious apartment of about 112 m² in a corner building, totally exterior and lots of light. The apartment is located on the third floor of this farm from the year 2000. Its current layout, on the first floor, consists of a hall, a courtesy toilet, a spacious living-dining room with access to a balcony, an independent kitchen also with access to a balcony. On the second floor, we find a double bedroom with access to a balcony, an exterior single bedroom, an exterior en-suite double bedroom with access to a balcony and a complete bathroom with a shower. The house enjoys a lot of natural light, cross

ventilation and the balconies face west. The property has porcelain stoneware floors, split air conditioning and individual gas heating. The apartment has aluminum carpentry with double glazing and electric shutters. The farm is equipped with an automatic intercom, elevator and a community terrace.

Contact us,
we will be happy to assist you,
to offer you more details and information.

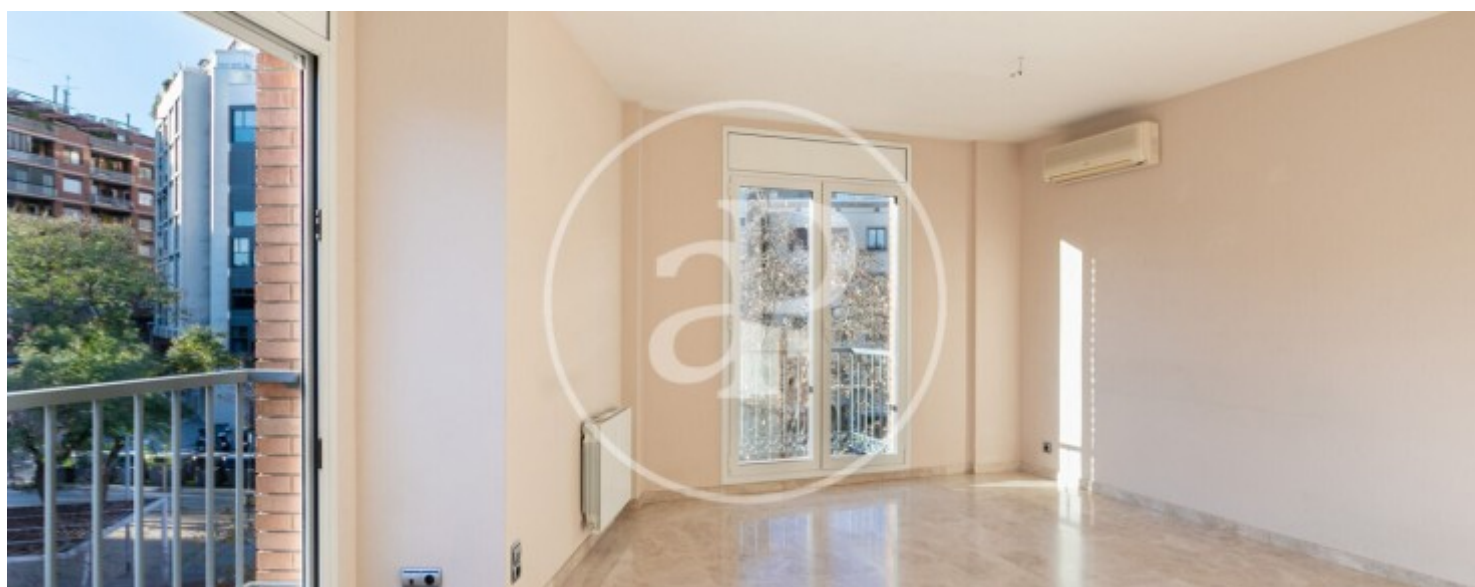
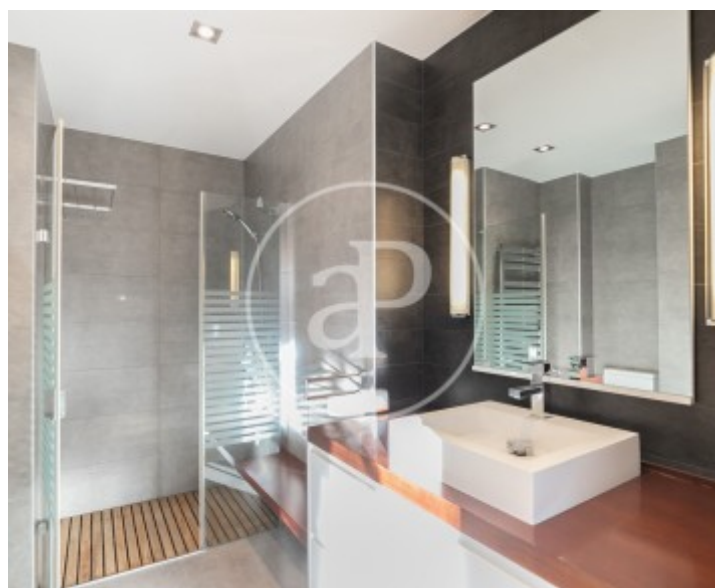
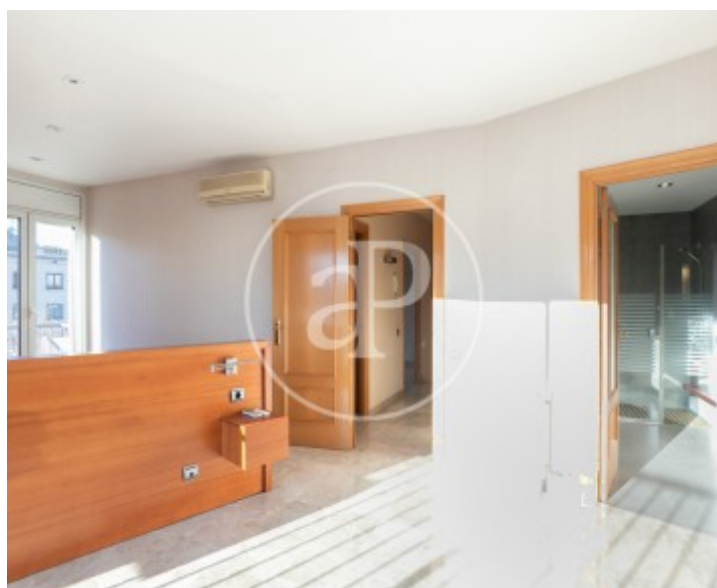
El Camp de l'Arpa, Barcelona

REF. VB2301037



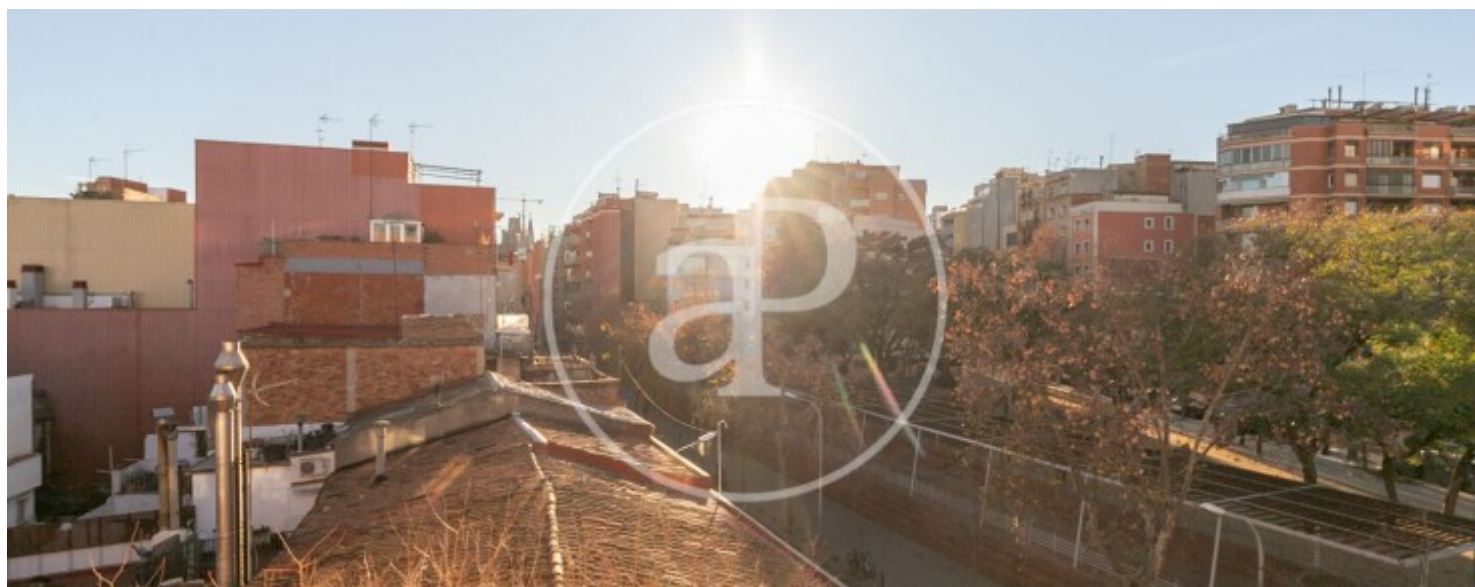
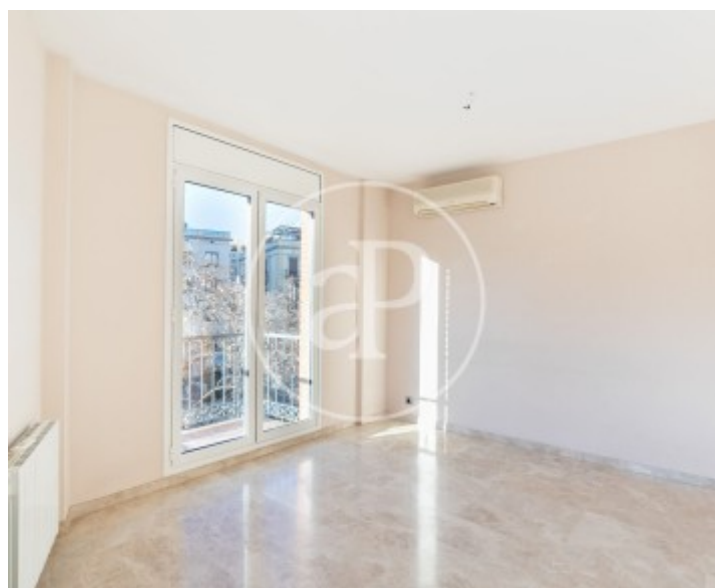
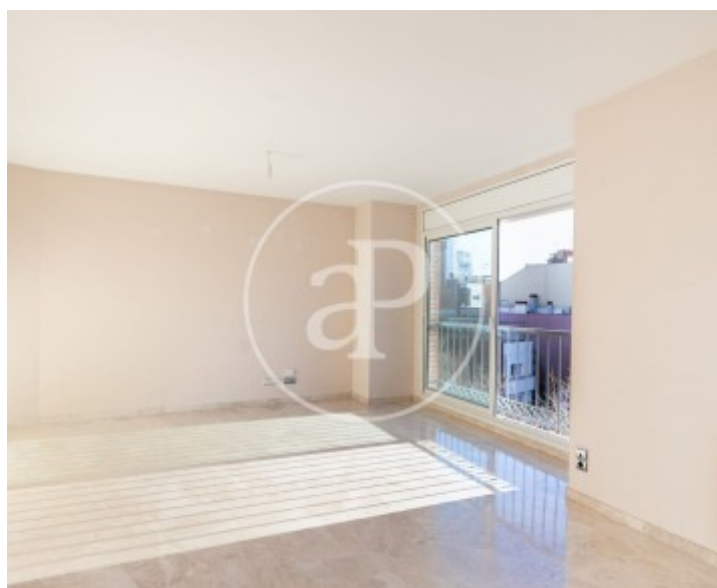
El Camp de l'Arpa, Barcelona

REF. VB2301037



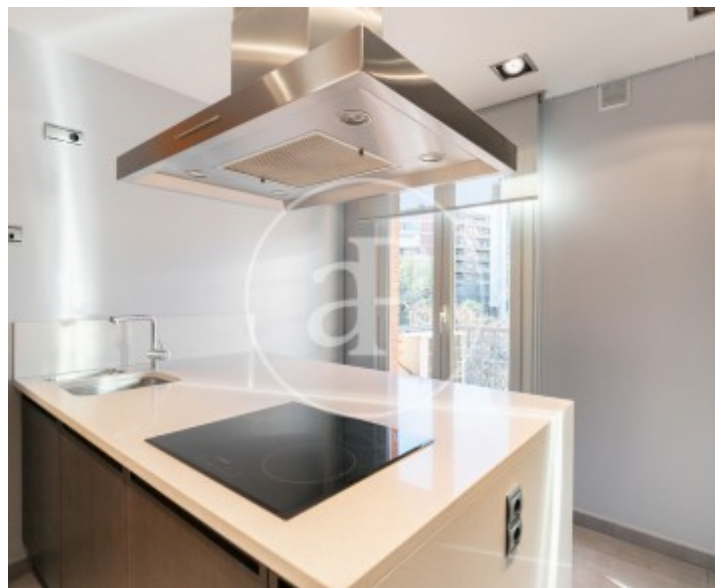
El Camp de l'Arpa, Barcelona

REF. VB2301037



El Camp de l'Arpa, Barcelona

REF. VB2301037



The information about any property is not binding to any offer or contract. Any verbal or written declaration made by aProperties with regards to the value or condition of the property should not be considered accurate or factual. The pictures make reference to some parts of the property at the times that they were taken. The areas, dimensions and distances that are given are approximate and should be checked by the client. The images are computer generated and are just an approximate indication of the real appearance of the property; these may change at any time. The information with regards to the property may also change at any time.

For **more information** or
to make an appointment

apropertiesbarcelona@aproperties.es
Tel: 93 528 89 08
www.aproperties.es