

El Born, Barcelona

REF. VB2607020

# Apartment for sale on Passeig Isabel II

## Features

- ✓ Views
- ✓ Heating
- ✓ Furnished
- ✓ Boxroom
- ✓ AACC
- ✓ Pool
- ✓ Concierge

Surface

**66 m<sup>2</sup>**

Bedroom

**1**

Bathroom

**1**

Price

**450,000 €**



## Living in this apartment means enjoying one of Barcelona's most iconic and privileged locations.

Situated on Passeig d'Isabel II, just a few metres from Port Vell, the property is located within the historic Porxos d'en Xifré complex, one of the city's most representative Neoclassical buildings, recognised for its heritage value and built between 1836 and 1840. This emblematic architectural landmark marks the entrance to the Born neighbourhood and the port, forming part of Barcelona's history and identity. The property offers 63 sqm built area (50 sqm usable area) and features a comfortable, functional layout with excellent use of

space. It includes one bedroom, an independent dressing room, a complete bathroom, an independent kitchen with dining area, and a separate living room, creating clearly defined spaces that provide privacy and comfort for everyday living. Its double south-west and west orientation ensures an exceptional amount of natural light throughout much of the day, creating a warm, bright and welcoming atmosphere in every room. To guarantee maximum comfort all year round, the apartment is equipped with air conditioning and heating through split units with an aerothermal energy system, an efficient...

**Contact us,**  
we will be happy to assist you,  
to offer you more details and information.

El Born, Barcelona

REF. VB2607020



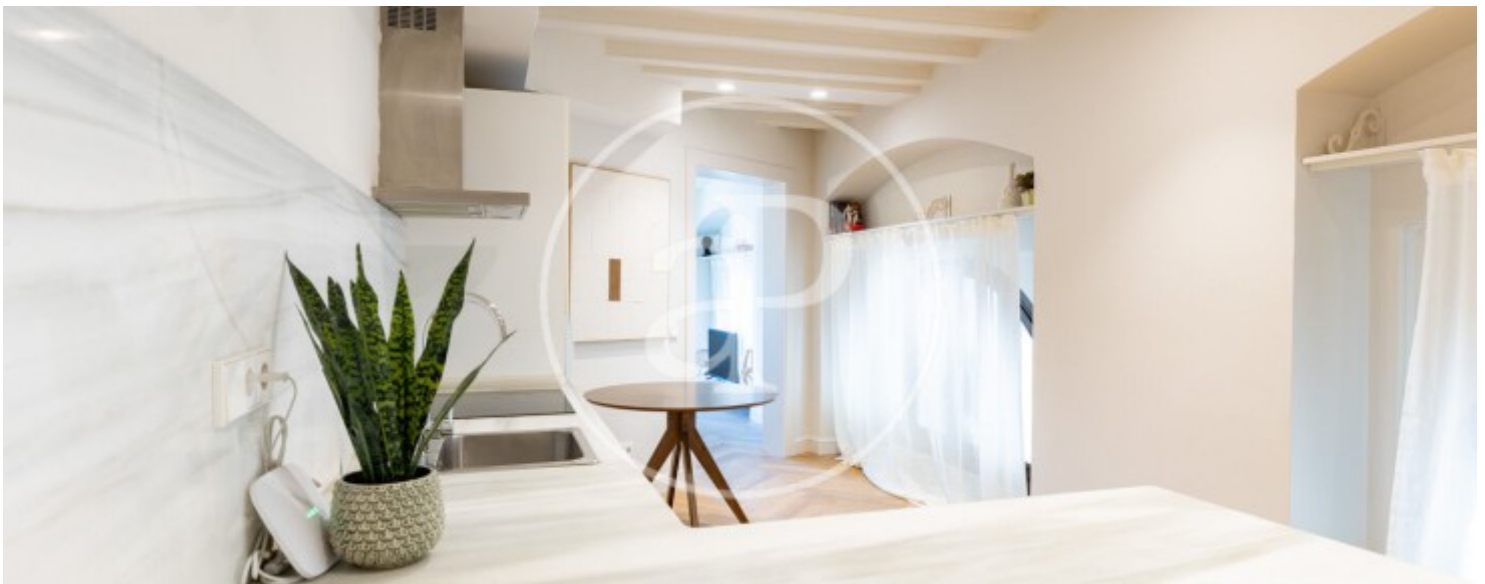
El Born, Barcelona

REF. VB2607020



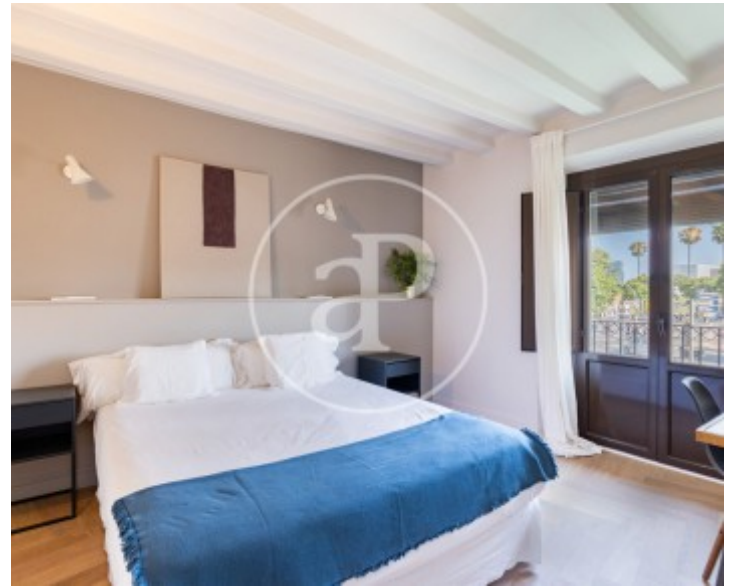
El Born, Barcelona

REF. VB2607020



El Born, Barcelona

REF. VB2607020



The information about any property is not binding to any offer or contract. Any verbal or written declaration made by aProperties with regards to the value or condition of the property should not be considered accurate or factual. The pictures make reference to some parts of the property at the times that they were taken. The areas, dimensions and distances that are given are approximate and should be checked by the client. The images are computer generated and are just an approximate indication of the real appearance of the property; these may change at any time. The information with regards to the property may also change at any time.

For **more information** or  
to make an appointment

[apropertiesbarcelona@aproperties.es](mailto:apropertiesbarcelona@aproperties.es)  
Tel: 93 528 89 08  
[www.aproperties.es](http://www.aproperties.es)