

Eixample Esquerra, Barcelona

REF. AB2005119



Refurbished flat for rent in Calle Balmes, Eixample Esquerra

Features

- ✓ Heating
- ✓ AACC
- ✓ Lift
- ✓ Concierge

Price

1,100 €

Surface

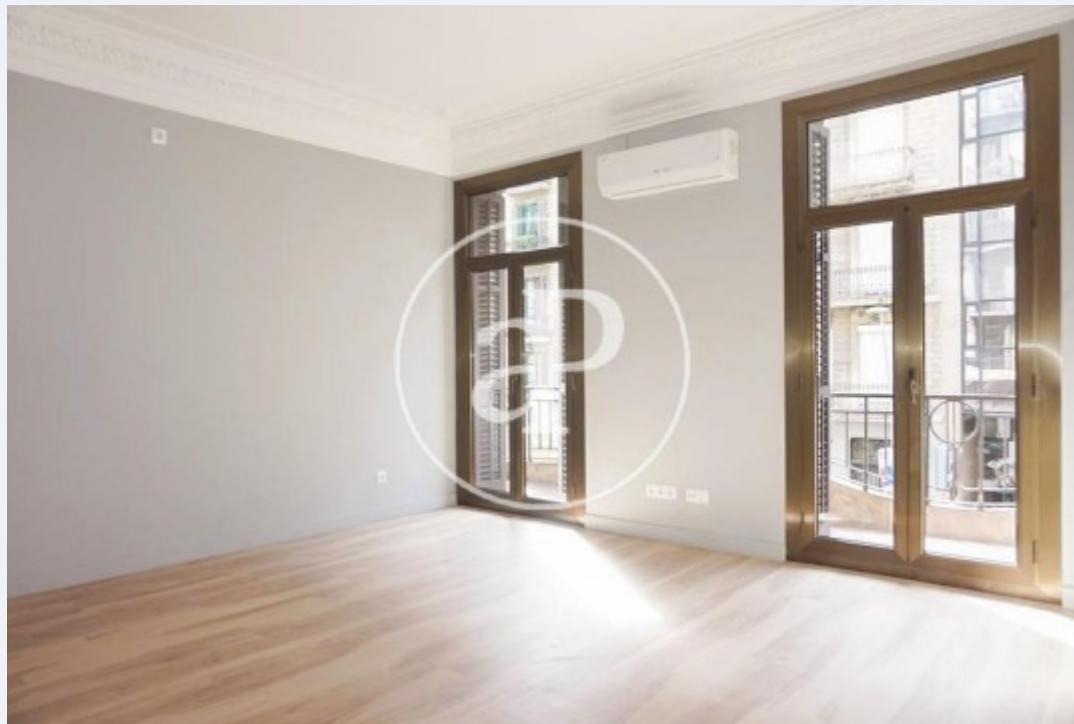
60 m²

Bedrooms

2

Bathroom

1



A step away from the Avenida Diagonal and the prestigious Passeig de Gràcia and the beautiful Rambla Catalunya, surrounded by restaurants, shops, luxury stores and very well connected by all public transport, we find this cozy apartment of 60sqm recently renovated. The apartment has a living-dining room of 26sqm totally exterior with exit to a typical balcony of l'Eixample and open kitchen semi-equipped. In the night area, we find two double rooms and a complete bathroom with shower. This charming flat located in the heart of the Eixample, has parquet floors, heating in all rooms, air conditioning by Split and aluminum carpentry with double glazing. The property has a concierge service and a lift. Availability in the middle of June.

Contact us,
we will be happy to assist you,
to offer you more details and information.

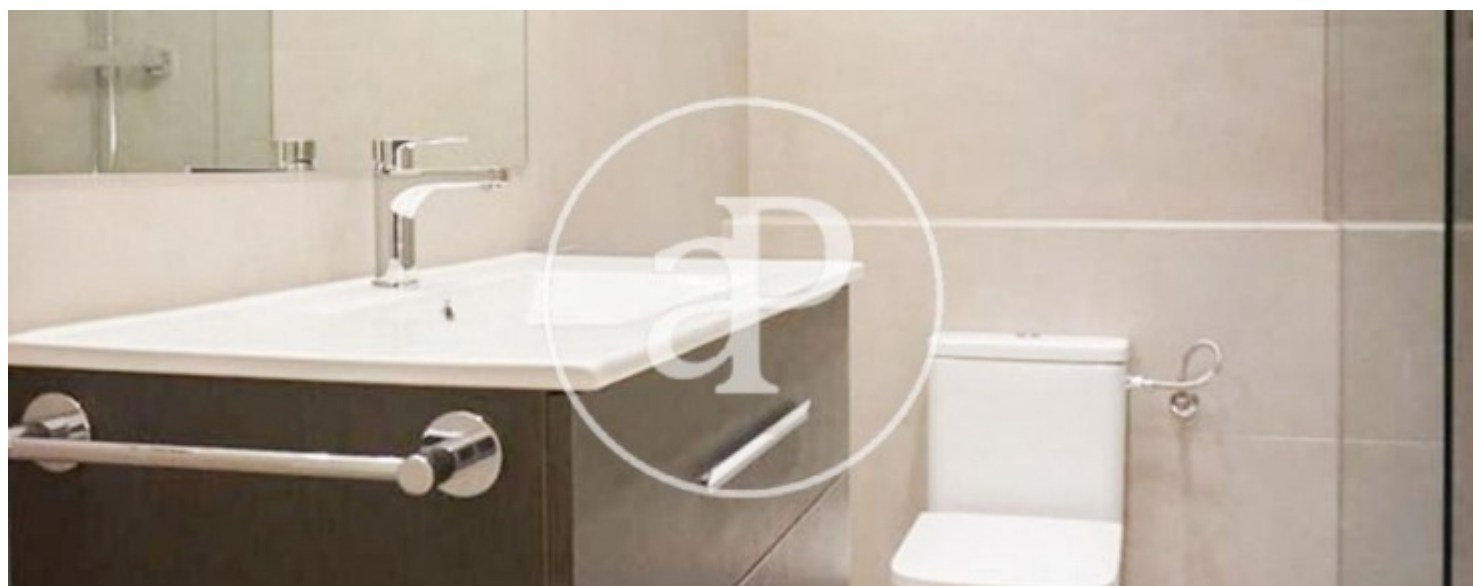
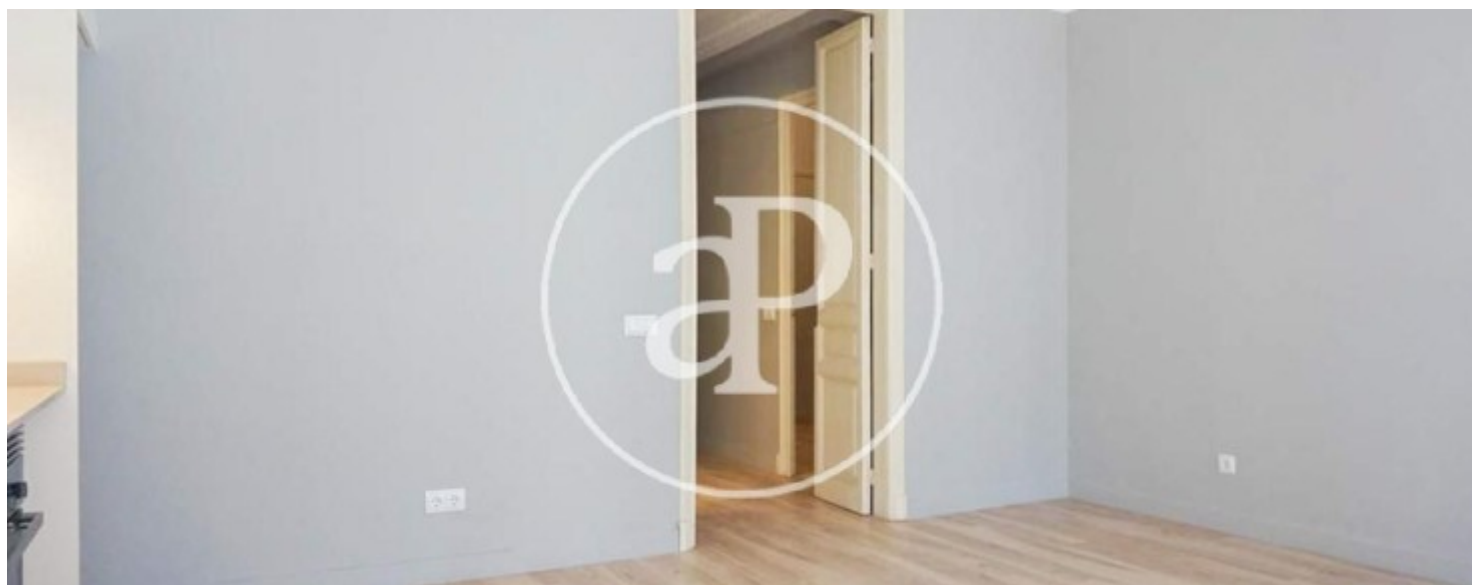
Eixample Esquerra, Barcelona

REF. AB2005119



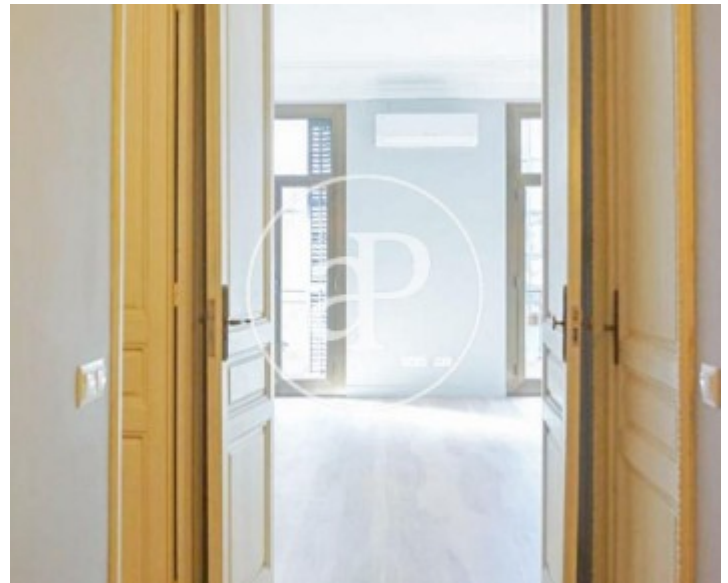
Eixample Esquerra, Barcelona

REF. AB2005119



Eixample Esquerra, Barcelona

REF. AB2005119



The information about any property is not binding to any offer or contract. Any verbal or written declaration made by aProperties with regards to the value or condition of the property should not be considered accurate or factual. The pictures make reference to some parts of the property at the times that they were taken. The areas, dimensions and distances that are given are approximate and should be checked by the client. The images are computer generated and are just an approximate indication of the real appearance of the property; these may change at any time. The information with regards to the property may also change at any time.



For **more information** or
to make an appointment

apropertiesbarcelona@aproperties.es
Tel: 93 528 89 08
www.aproperties.es