

Eixample Esquerra, Barcelona

REF. AB1711030

Nice furnished apartment for rent in l'Eixample

Features

- ✓ Heating
- ✓ AACC
- ✓ Furnished
- ✓ Lift

Surface

110 m²

Bedrooms

3

Bathrooms

2

Price

2,000 €



Located in the heart of the Eixample, with access to multiple transport services, in a traditional and recently renovated Barcelona building, preserving the charm of the typical architecture of l'Eixample Barcelonés and with modern decoration, we find this beautiful 110sqm flat. It has a day area composed of a living room and a kitchenette fully equipped open to the living room. The night area has three double bedrooms, one en suite and another bathroom with shower. The flat has parquet floors, heating and air conditioning. It has excellent finishes and high quality materials. It is rented furnished, students are not accepted and pets are not allowed. * In compliance with Law 12/2023 and Law 18/2007, we inform that

Contact us,
we will be happy to assist you,
to offer you more details and information.

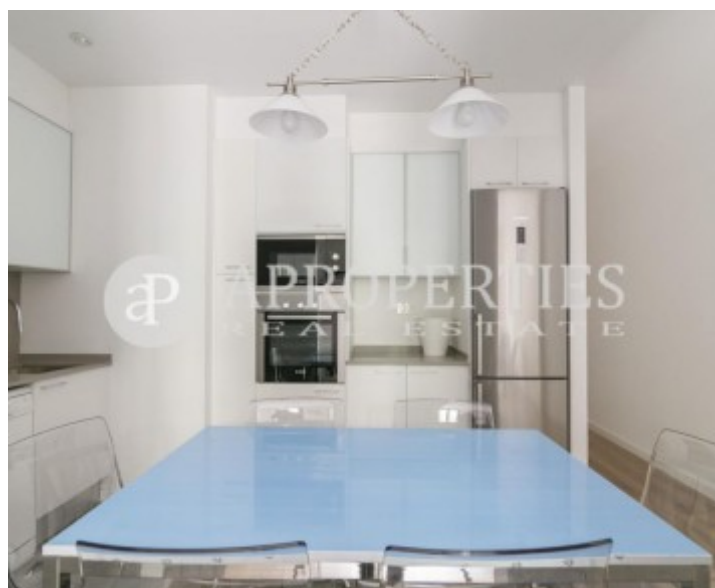
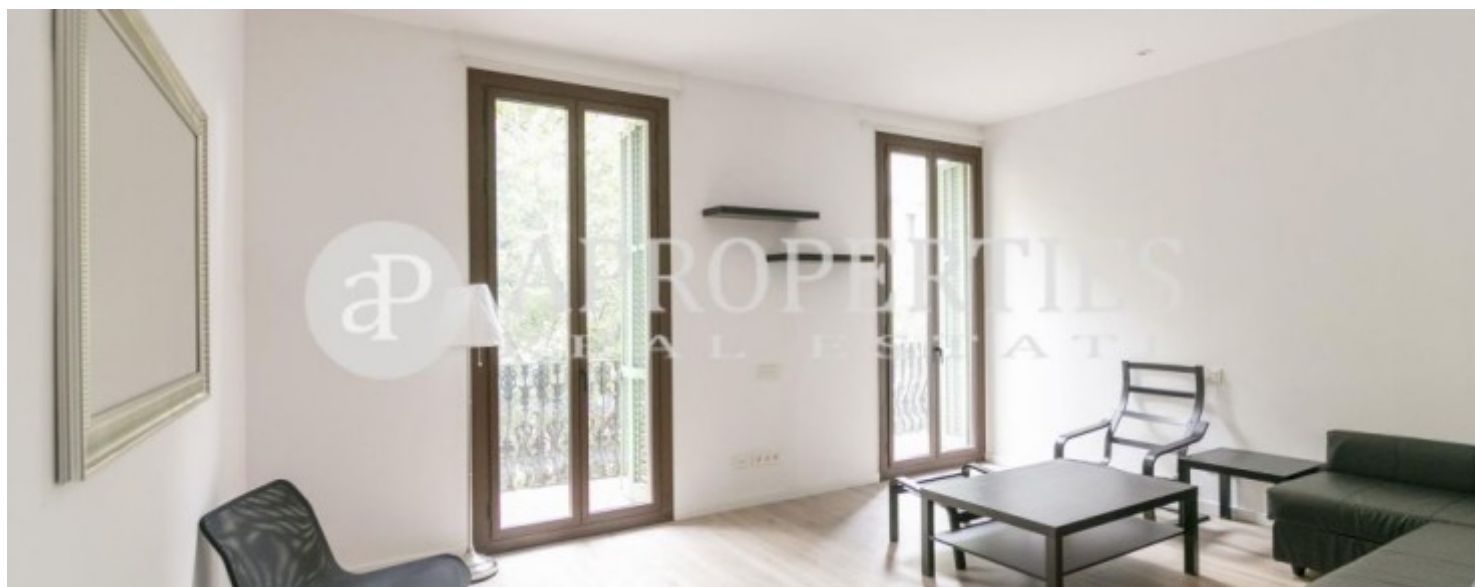
Eixample Esquerra, Barcelona

REF. AB1711030



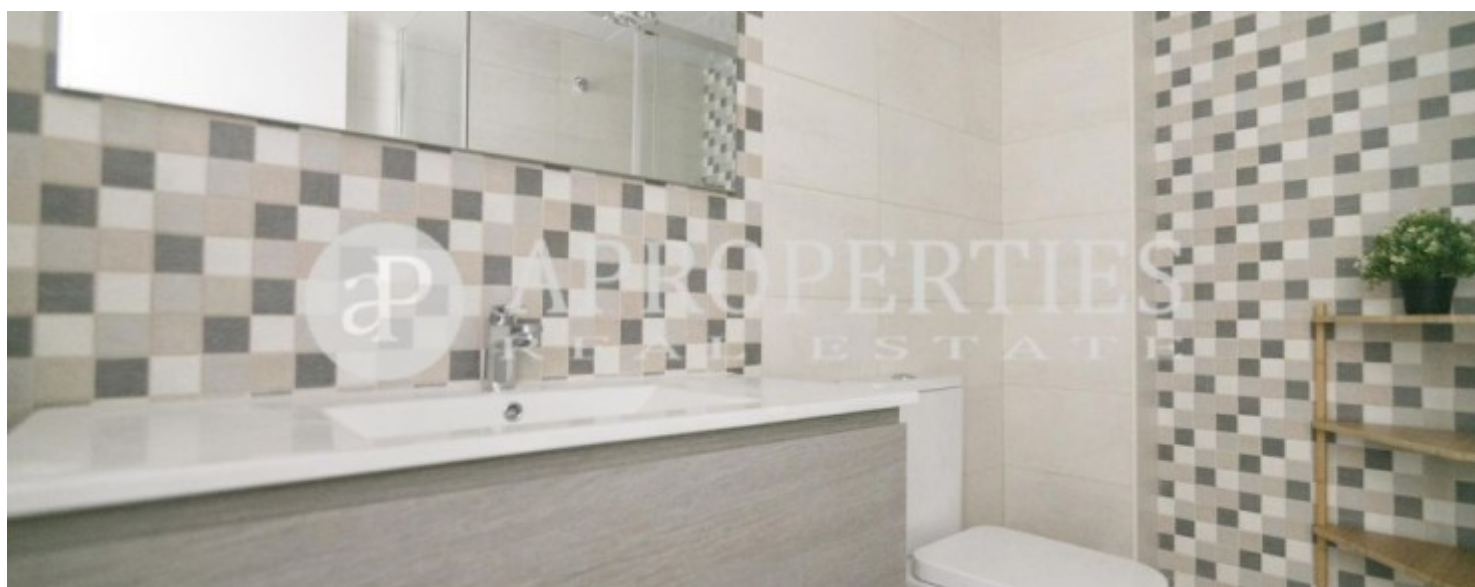
Eixample Esquerra, Barcelona

REF. AB1711030



Eixample Esquerra, Barcelona

REF. AB1711030



Eixample Esquerra, Barcelona

REF. AB1711030



The information about any property is not binding to any offer or contract. Any verbal or written declaration made by aProperties with regards to the value or condition of the property should not be considered accurate or factual. The pictures make reference to some parts of the property at the times that they were taken. The areas, dimensions and distances that are given are approximate and should be checked by the client. The images are computer generated and are just an approximate indication of the real appearance of the property; these may change at any time. The information with regards to the property may also change at any time.

For **more information** or
to make an appointment

apropertiesbarcelona@aproperties.es
Tel: 93 528 89 08
www.aproperties.es