



Eixample Esquerra, Barcelona

REF. VB2509006

# Flat for sale in Eixample Esquerra

## Features

- ✓ Heating
- ✓ AACC
- ✓ Boxroom
- ✓ Lift

Surface

**84 m<sup>2</sup>**

Bedrooms

**3**

Bathrooms

**2**

Price

**499,000 €**



**This beautiful flat is located on Diputació Street, in the heart of Eixample Esquerra, one of the most vibrant and sought-after areas of Barcelona.**

The property offers a comfortable and functional space, ideal both for living or as an investment. The flat, of 84sqm surface, features a double bedroom, perfect for rest and relaxation, as well as two single bedrooms that can be adapted to various needs, such as an office, guest room, or study. The living-dining room is spacious and bright, with an integrated kitchen that enhances daily life and meal preparation. It also includes a laundry area and a storage room on the rooftop, providing extra space for

convenience and storage. The home has a full bathroom and an additional toilet, offering greater comfort for its residents. Eixample Esquerra is known for its modernist architecture, wide streets, and dynamic atmosphere. You'll find a wide range of shops, restaurants, and cafés, along with excellent public transport connections that make getting around the city easy. This flat combines comfort, functionality, and a prime location in one of Barcelona's most attractive neighborhoods. Don't hesitate to contact us for more information!

**Contact us,**  
we will be happy to assist you,  
to offer you more details and information.

Eixample Esquerra, Barcelona

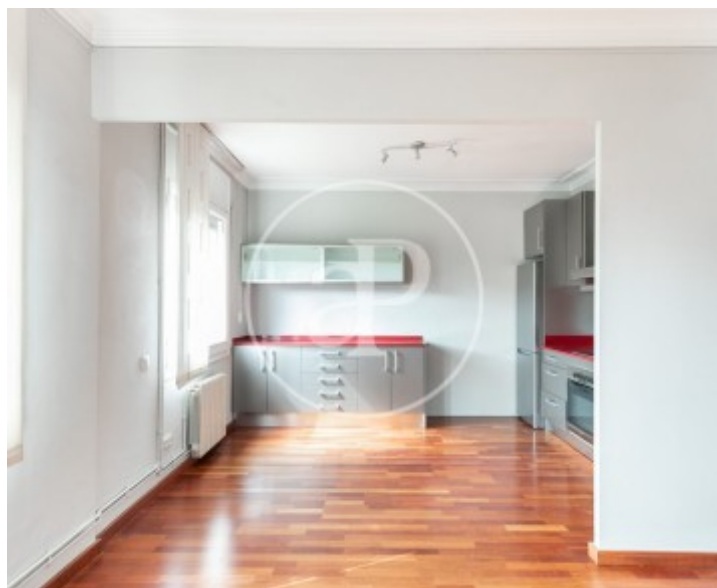
REF. VB2509006





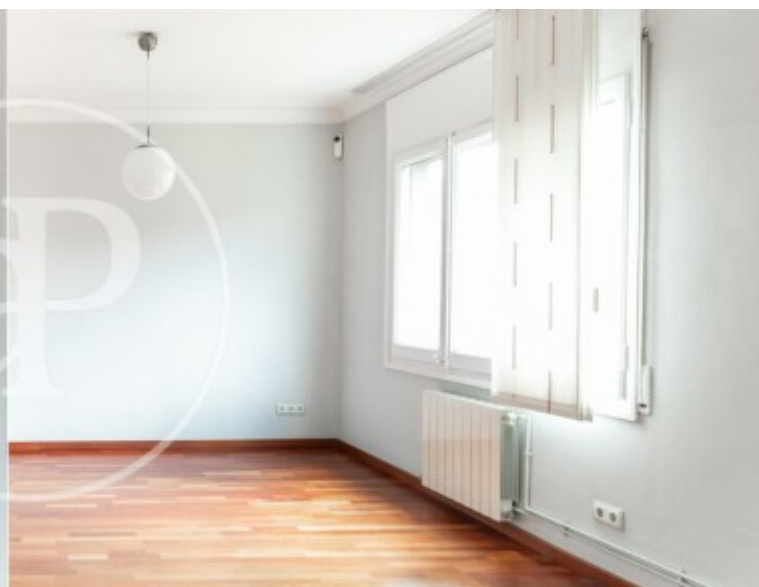
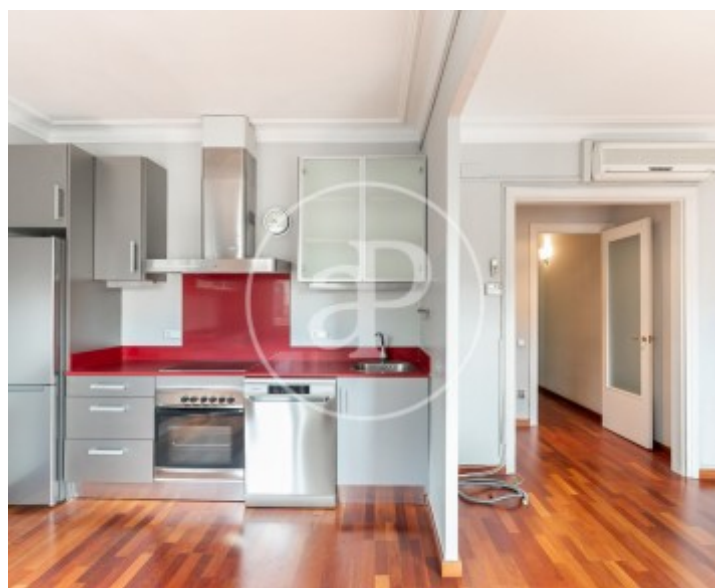
Eixample Esquerra, Barcelona

REF. VB2509006



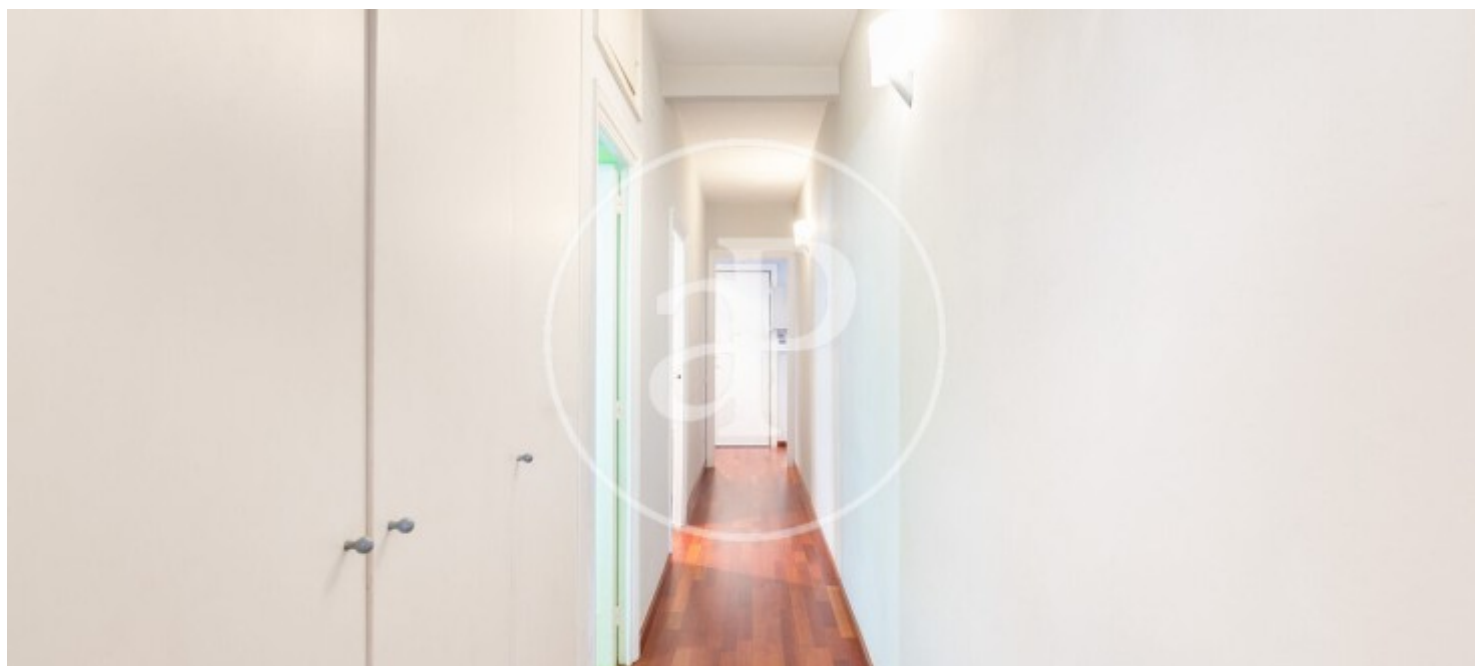
Eixample Esquerra, Barcelona

REF. VB2509006



Eixample Esquerra, Barcelona

REF. VB2509006



The information about any property is not binding to any offer or contract. Any verbal or written declaration made by aProperties with regards to the value or condition of the property should not be considered accurate or factual. The pictures make reference to some parts of the property at the times that they were taken. The areas, dimensions and distances that are given are approximate and should be checked by the client. The images are computer generated and are just an approximate indication of the real appearance of the property; these may change at any time. The information with regards to the property may also change at any time.

For **more information** or  
to make an appointment

[apropertiesbarcelona@aproperties.es](mailto:apropertiesbarcelona@aproperties.es)  
Tel: 93 528 89 08  
[www.aproperties.es](http://www.aproperties.es)