

Eixample Esquerra, Barcelona

REF. AB2604058

# Apartment for rent on Avenida Roma

## Features

- ✓ Views
- ✓ Heating
- ✓ Furnished
- ✓ AACC
- ✓ Lift

Price  
**1,107 €**

Surface

**56 m<sup>2</sup>**

Bedrooms

**2**

Bathroom

**1**



## Available from May 4.

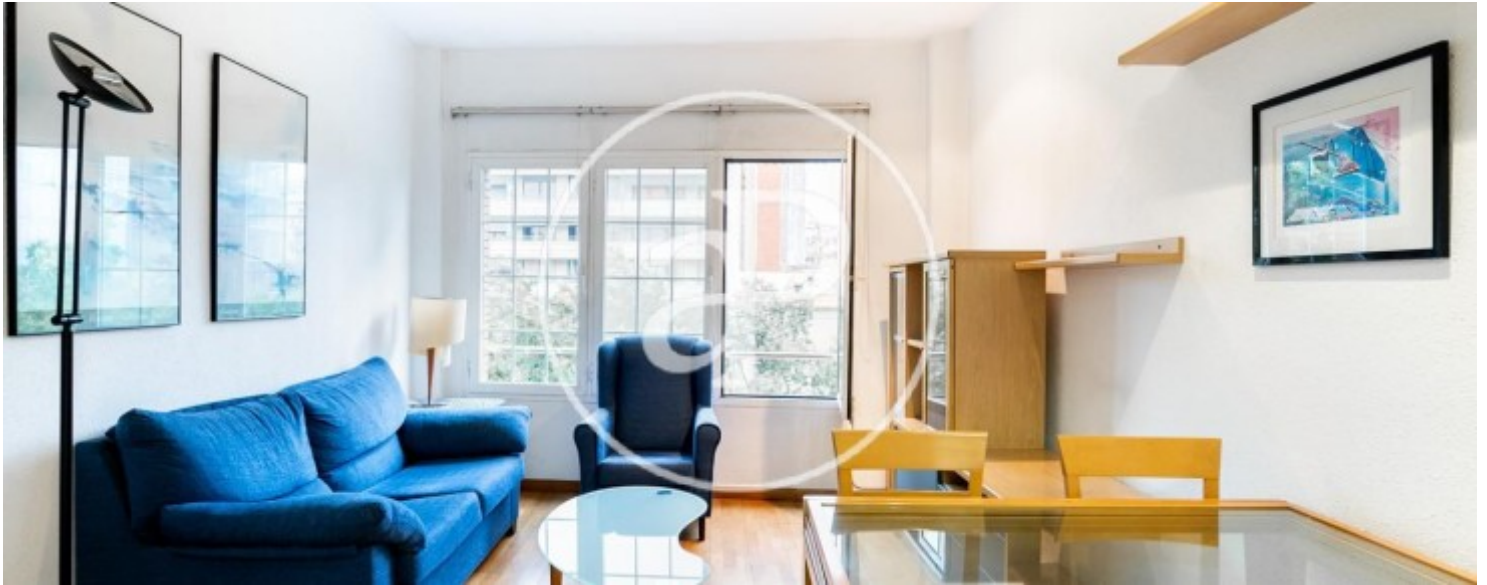
Located in Eixample Esquerra, this cozy 55 m<sup>2</sup> apartment enjoys open, garden views and excellent ventilation. It is very well connected, close to Estació de metro Entença and Estació de metro Tarragona, just three streets from Parc de Joan Miró and two streets from EAE Business School. The night area consists of two bedrooms: one single and one double. The laundry area is separated into a small utility room. The living-dining room, overlooking Avinguda Roma, is fully furnished and equipped, and connects directly to the kitchen. The property features ducted heating and air conditioning. Currently available for

long-term rental. Ideal for young couples.\* In compliance with Law 12/2023 and Law 18/2007, we hereby inform that: R.P.LL Index: 17,14 € / m<sup>2</sup> State reference rental price 1.060,00 € Rent of the last lease agreement: 850,00 € This owner does not qualify as a large property holder. Habitability Certificate: CHB03485021\*\*\* The last three digits are omitted to ensure the proper use of the information; the full number is available upon request for interested parties.

**Contact us,**  
we will be happy to assist you,  
to offer you more details and information.

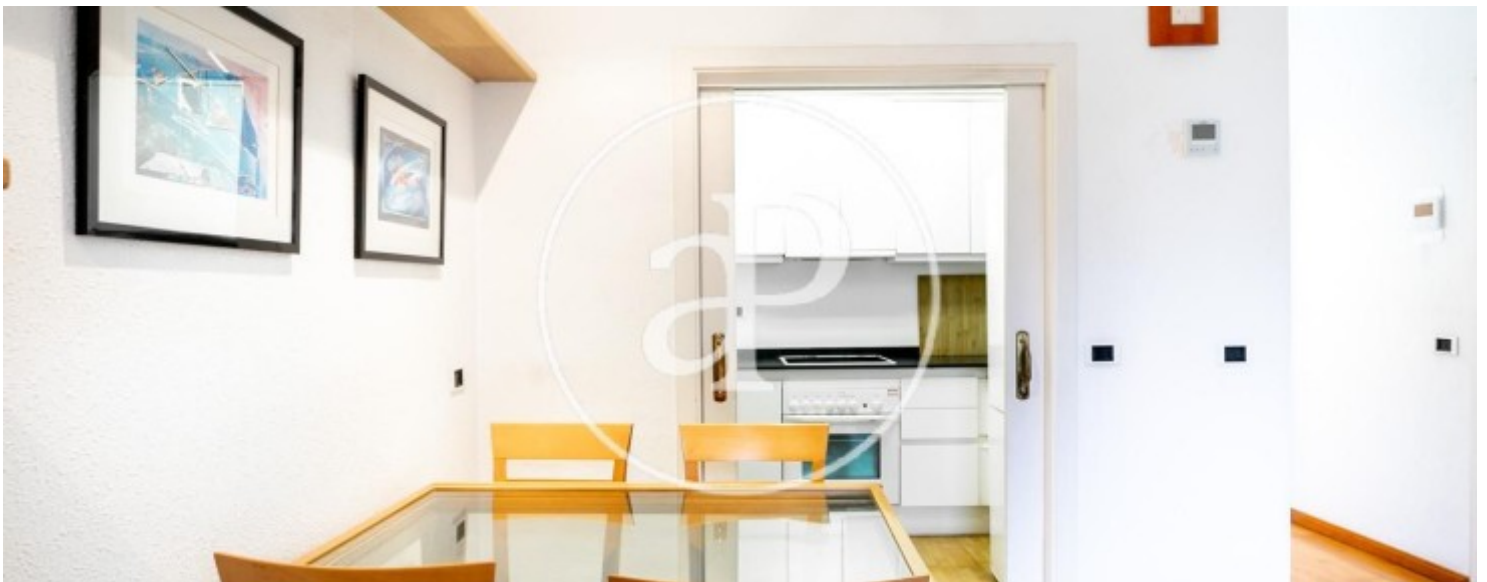
Eixample Esquerra, Barcelona

REF. AB2604058



Eixample Esquerra, Barcelona

REF. AB2604058



Eixample Esquerra, Barcelona

REF. AB2604058



Eixample Esquerra, Barcelona

REF. AB2604058



The information about any property is not binding to any offer or contract. Any verbal or written declaration made by aProperties with regards to the value or condition of the property should not be considered accurate or factual. The pictures make reference to some parts of the property at the times that they were taken. The areas, dimensions and distances that are given are approximate and should be checked by the client. The images are computer generated and are just an approximate indication of the real appearance of the property; these may change at any time. The information with regards to the property may also change at any time.

For **more information** or  
to make an appointment

[apropertiesbarcelona@aproperties.es](mailto:apropertiesbarcelona@aproperties.es)  
Tel: 93 528 89 08  
[www.aproperties.es](http://www.aproperties.es)