

Eixample Esquerra, Barcelona

REF. VB1611039

Completely renovated apartment in Eixample Esquerra

Features

- ✓ Heating
- ✓ Terrace
- ✓ Concierge
- ✓ AACC
- ✓ Lift

Surface
104 m²

Bedrooms
3

Bathrooms
2

Price
609,000 €



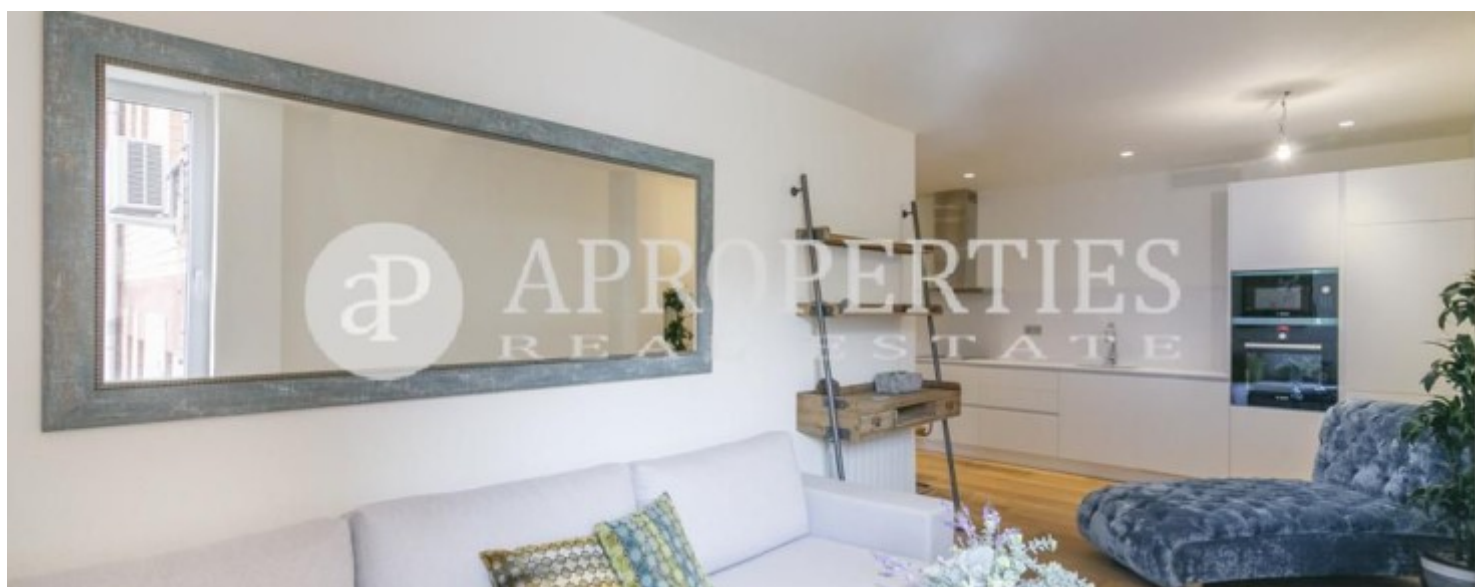
In Esquerra Alta de l'Eixample, a few meters from the Avinguda Josep Tarradellas, and surrounded by all the necessary services and shops, we find this magnificent promotion of renovated flats.

Two and three bedroom apartments. Furnished and unfurnished. This reform has been made with finishes and first quality materials, prioritizing comfort and design. Elements such as parquet floors, air conditioning ducts, heating radiators, fully equipped kitchen and aluminum double glazed enclosures, are some of the signs of presentation of these homes. Great opportunity to get a brand new home in one of the best areas of the Eixample Esquerra.

Contact us,
we will be happy to assist you,
to offer you more details and information.

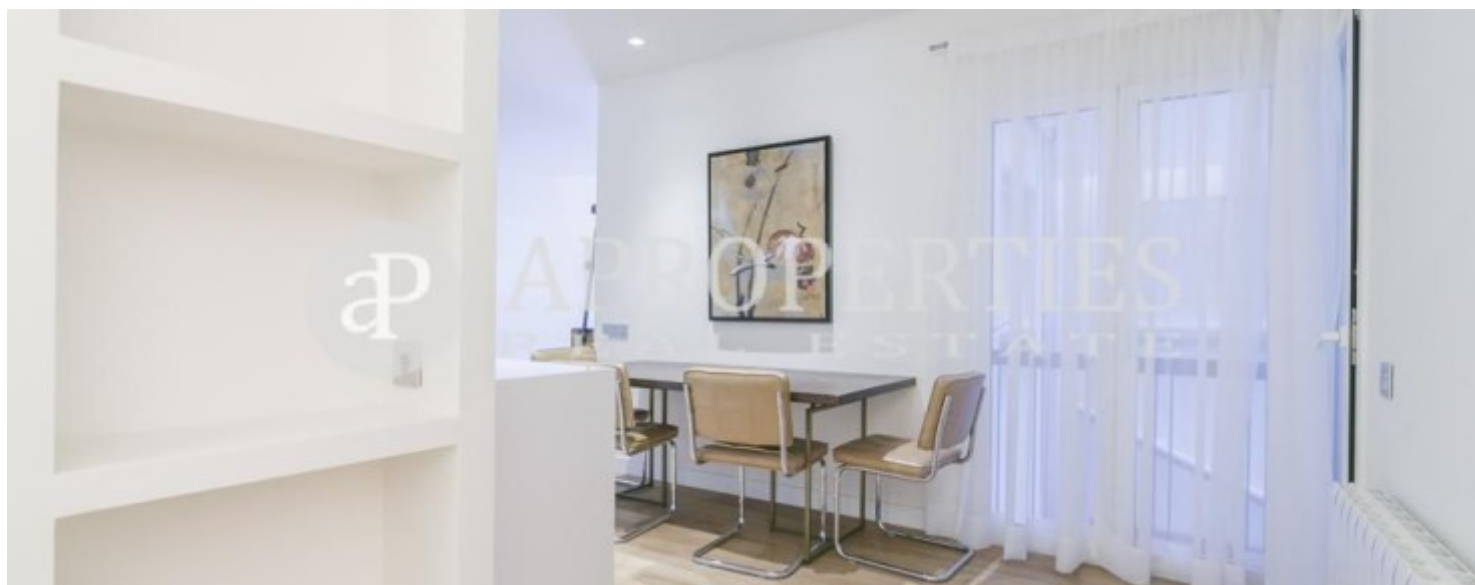
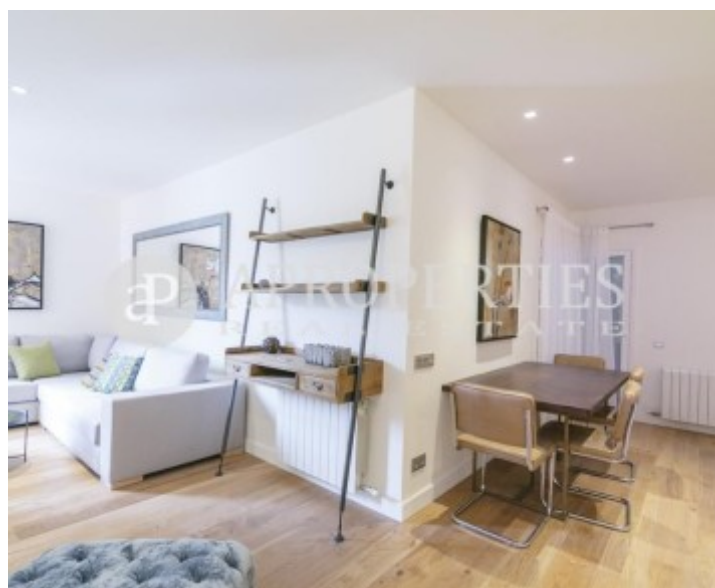
Eixample Esquerra, Barcelona

REF. VB1611039



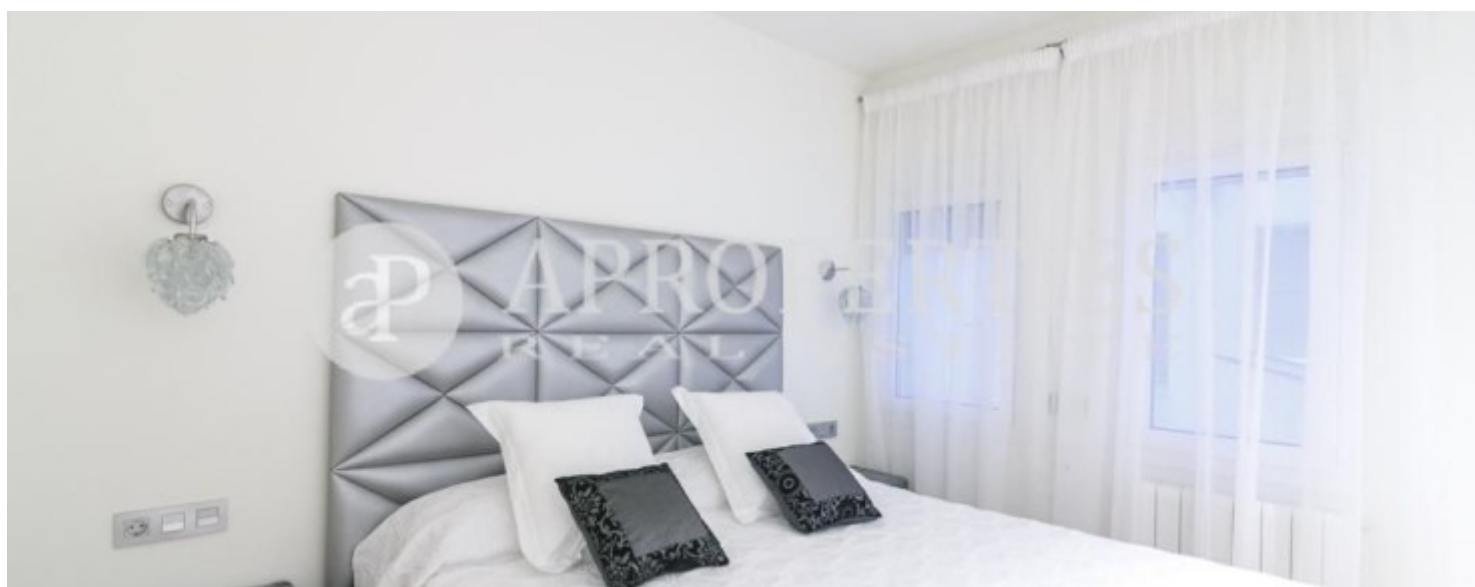
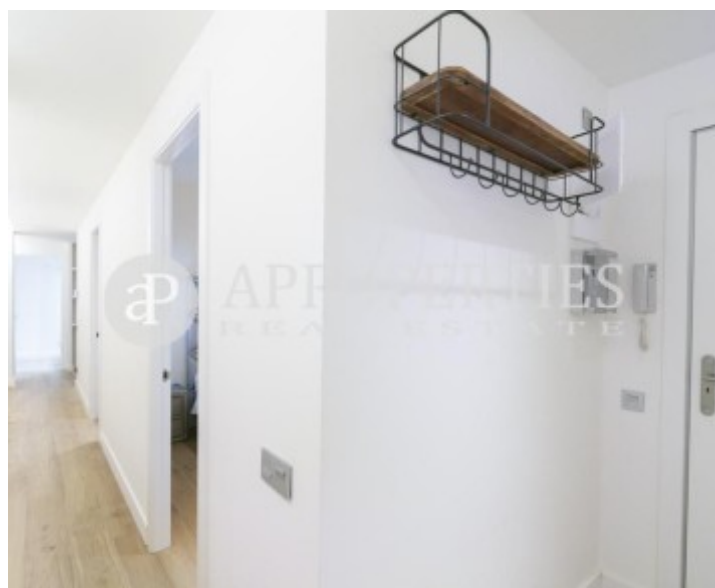
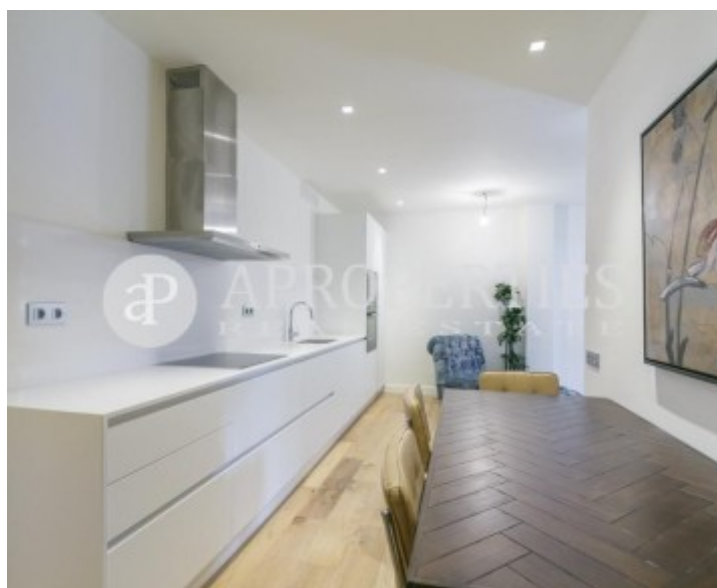
Eixample Esquerra, Barcelona

REF. VB1611039



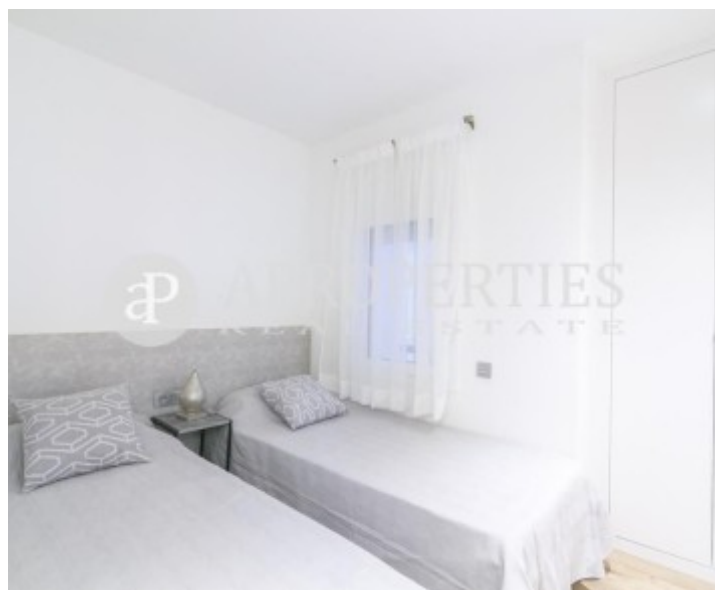
Eixample Esquerra, Barcelona

REF. VB1611039



Eixample Esquerra, Barcelona

REF. VB1611039



The information about any property is not binding to any offer or contract. Any verbal or written declaration made by aProperties with regards to the value or condition of the property should not be considered accurate or factual. The pictures make reference to some parts of the property at the times that they were taken. The areas, dimensions and distances that are given are approximate and should be checked by the client. The images are computer generated and are just an approximate indication of the real appearance of the property; these may change at any time. The information with regards to the property may also change at any time.

For **more information** or
to make an appointment

apropertiesbarcelona@aproperties.es
Tel: 93 528 89 08
www.aproperties.es