

Eixample Dreta, Barcelona

REF. VB2109031



## Penthouse with terrace to reform in the heart of Rambla Catalunya in Barcelona with 2 registration dwellings

### Features

Surface

**192 m<sup>2</sup>**

Bedrooms

**5**

Bathrooms

**3**

- ✓ Views
- ✓ Heating
- ✓ AACC
- ✓ Terrace
- ✓ Lift
- ✓ Concierge

Price

**1,200,000 €**



**In a Royal corner estate of Rambla Catalunya, formerly known as Casa Verdú, we present this beautiful apartment completely exterior and with double orientation.**

The attic, which measures 192 m<sup>2</sup>, consists of the union of two registration dwellings, one of 107m<sup>2</sup> and the other of 84m<sup>2</sup>, so it could be divided into 2 floors again. It currently has five bedrooms and three bathrooms, a spacious living room with fireplace and access to a long balcony / terrace of approximately 20 m<sup>2</sup> with views over the Rambla Catalunya. The area facing SE also has a 7 m<sup>2</sup> balcony overlooking a typical Ensanche Island patio. The apartment consists of parquet and gas heating. The farm

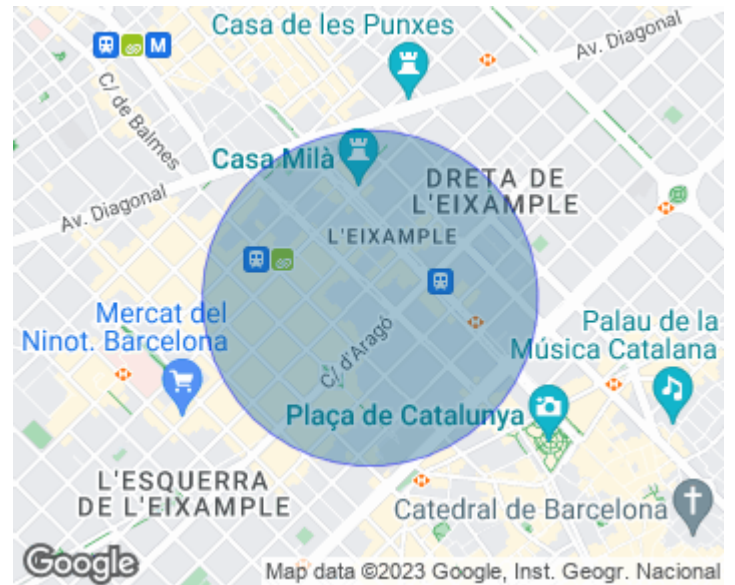
is completely rehabilitated and has a certificate of aptitude and also has a concierge service. It is a great opportunity to reform one or two apartments in an unbeatable location or to invest in two apartments to rent in the heart of Barcelona.

**Contact us,**  
we will be happy to assist you,  
to offer you more details and information.



Eixample Dreta, Barcelona

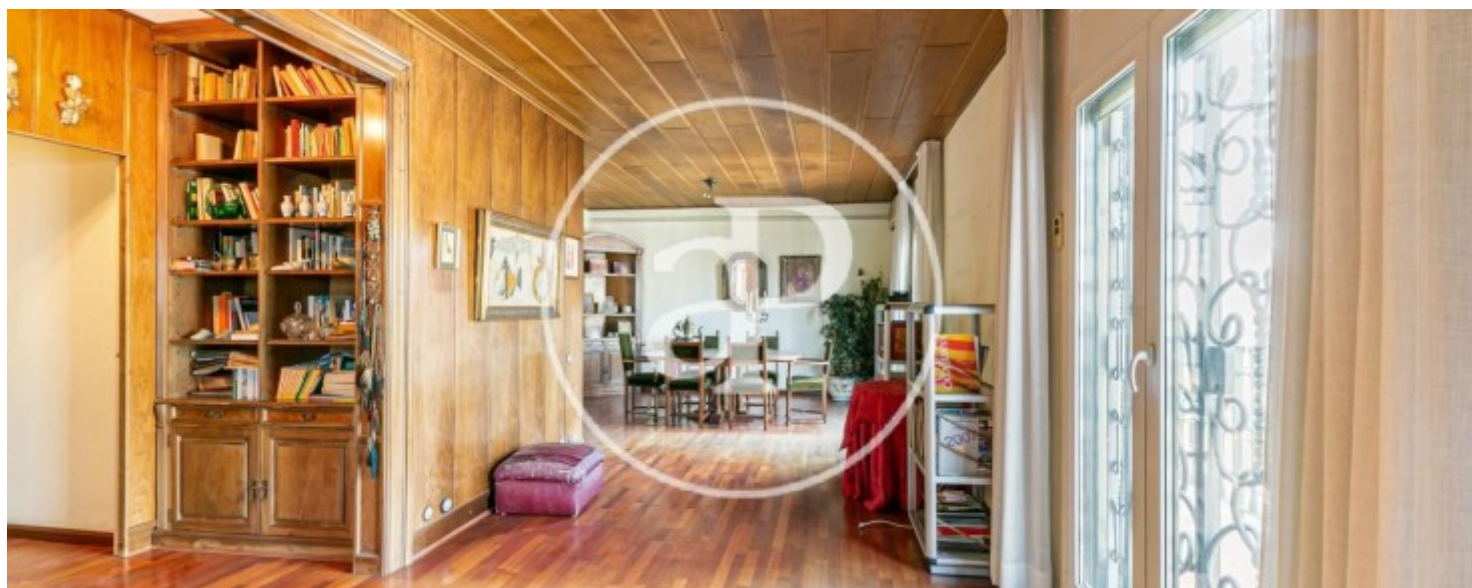
REF. VB2109031





Eixample Dreta, Barcelona

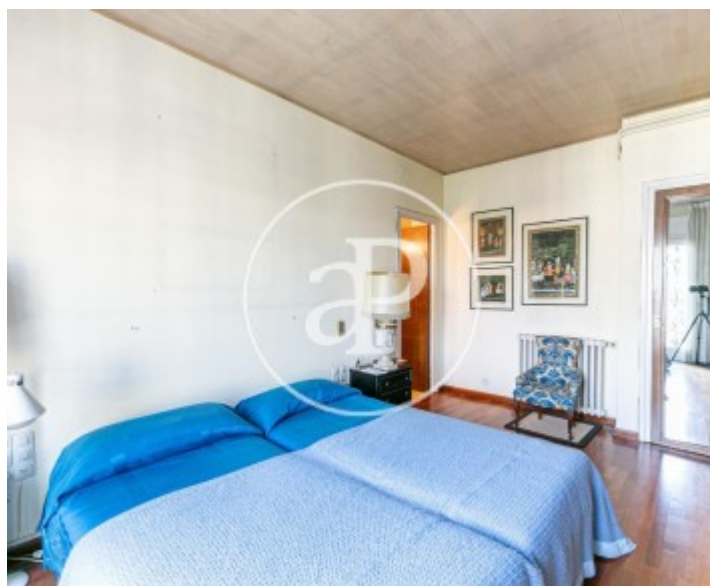
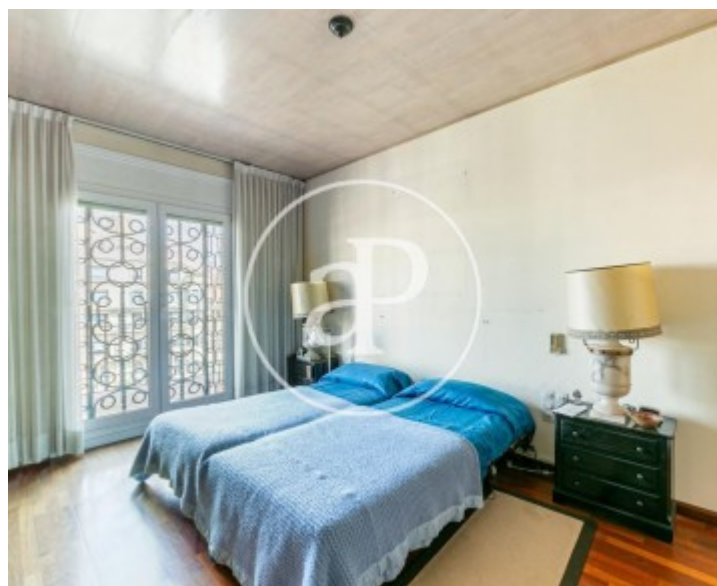
REF. VB2109031





Eixample Dreta, Barcelona

REF. VB2109031





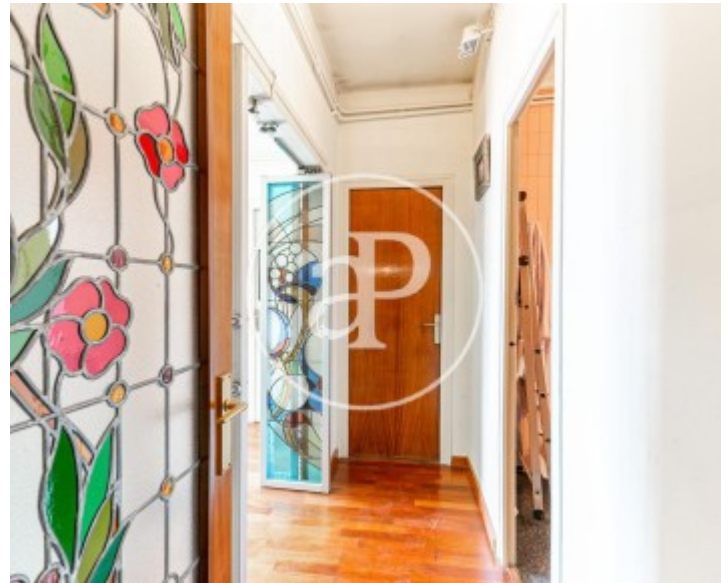


**APROPERTIES**  
REAL ESTATE

Paseo de Gracia 85  
08008 Barcelona  
T. 93 528 89 08  
[www.aproperties.es](http://www.aproperties.es)

**Eixample Dreta, Barcelona**

**REF. VB2109031**



The information about any property is not binding to any offer or contract. Any verbal or written declaration made by aProperties with regards to the value or condition of the property should not be considered accurate or factual. The pictures make reference to some parts of the property at the times that they were taken. The areas, dimensions and distances that are given are approximate and should be checked by the client. The images are computer generated and are just an approximate indication of the real appearance of the property; these may change at any time. The information with regards to the property may also change at any time.



**For more information or  
to make an appointment**

[apropertiesbarcelona@aproperties.es](mailto:apropertiesbarcelona@aproperties.es)  
Tel: 93 528 89 08  
[www.aproperties.es](http://www.aproperties.es)