

(Eixample Dreta)

Ref: ONB2305004-2



Mandarin Oriental Residences

New luxury apartment on the highest floors of the "Mandarin Oriental Residences" tower in Passeig de Gràcia 111, Barcelona. Formed by a spacious living room, with double aspect and a loggia; separate kitchen, also with two aspects; three bedrooms with ensuite bathroom; separate guest lavatory. Design, equipment and finishes of the highest quality available in the market. The apartment, with three aspects (double corner), enjoys panoramic views over the entire city. The owners benefit from a club level (on the sixth floor) with amenity areas, both indoor (library room, study and meeting rooms, gym with views, spa, changing rooms) and exterior (panoramic garden with terrace and outdoor pool). Three elevators. Two stairs. Building equipped with top safety and security measures. Secure car parking. Storage room. The building is managed for the owners by the Mandarin Oriental Hotel Group, providing owners and residents a level of services (24-hour security, management, concierge, event organization, cleaning, gardening, maintenance, etc.) comparable to that of the best hotels in the world.

Barcelona / Eixample Dreta

Surface
216 m² - 216 m²
Completion
Q2 2023

- ✓ Views
- ✓ Heating
- ✓ Boxroom
- ✓ AACC
- ✓ Pool
- ✓ Gym
- ✓ Lift
- ✓ Security
- ✓ Concierge
- ✓ Has parking

Price from 9,250,000 €



(Eixample Dreta)

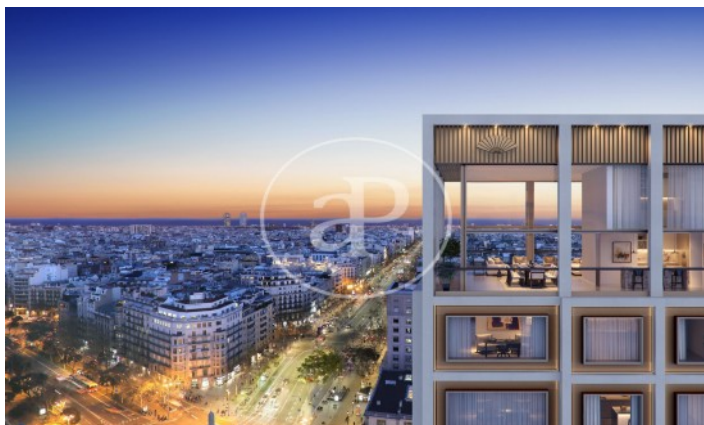
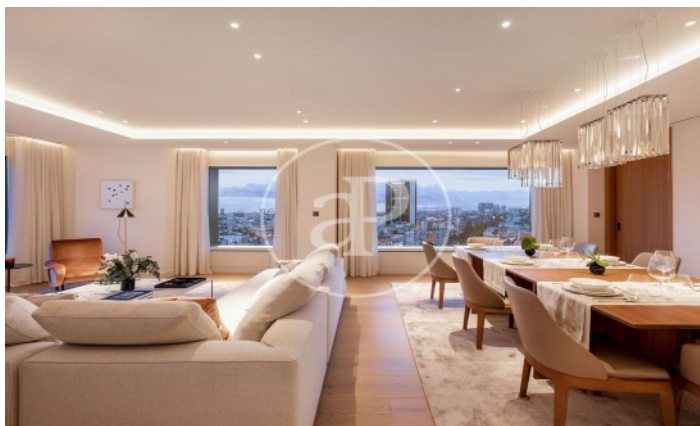
Ref: ONB2305004-2

Units in this development

Type	Unit	Surface	Terrace	Bedrooms	Bathrooms	Price	State
Flat	12° 2ª	216 m²	1 (4 m²)	3	4	€ 9,250,000	Available

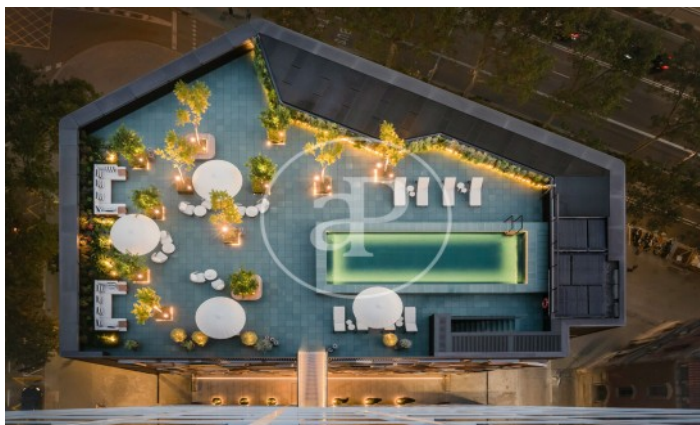
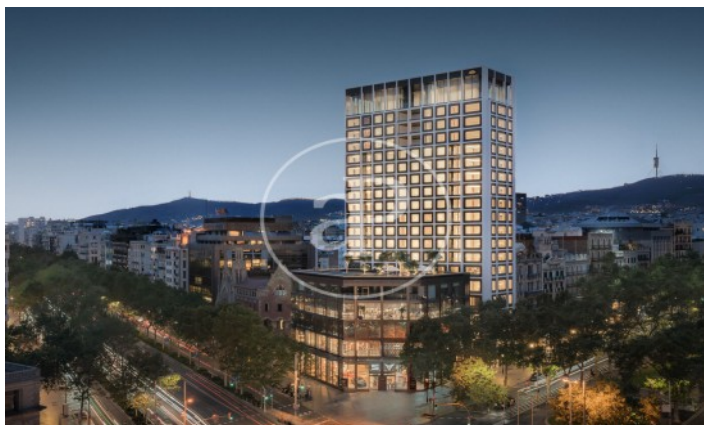
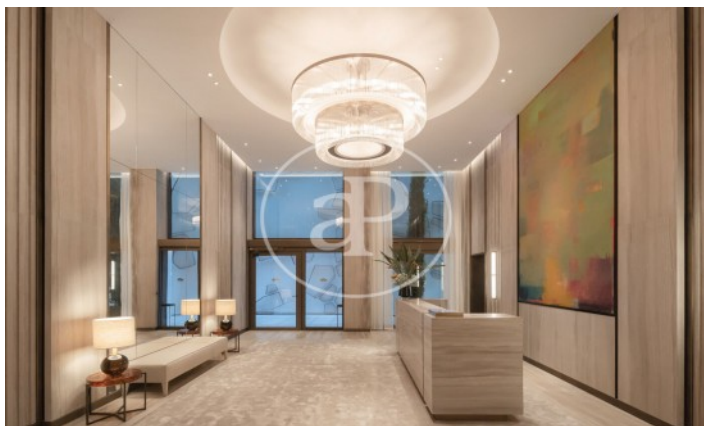
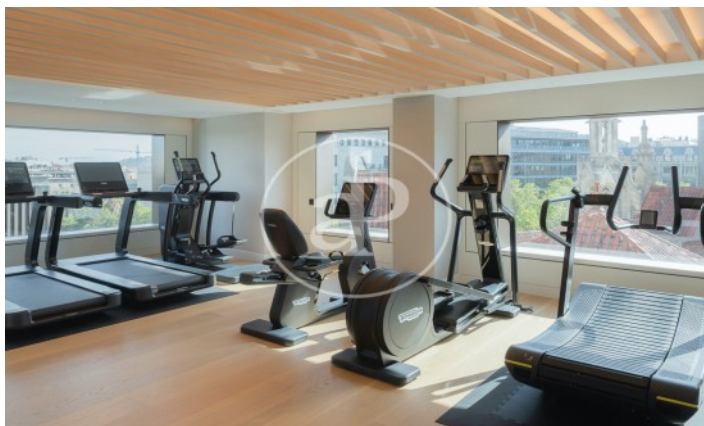
(Eixample Dreta)

Ref: ONB2305004-2



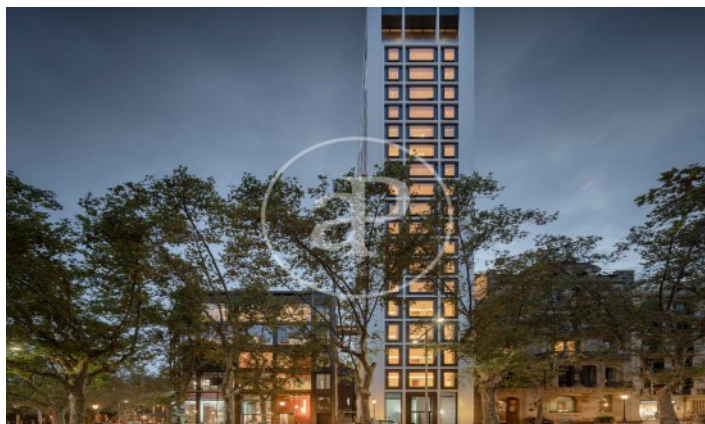
(Eixample Dreta)

Ref: ONB2305004-2



(Eixample Dreta)

Ref: ONB2305004-2



The information about any property is not binding to any offer or contract. Any verbal or written declaration made by aProperties with regards to the value or condition of the property should not be considered accurate or factual. The pictures make reference to some parts of the property at the times that they were taken. The areas, dimensions and distances that are given are approximate and should be checked by the client. The images are computer generated and are just an approximate indication of the real appearance of the property; these may change at any time. The information with regards to the property may also change at any time.

Contact us today for more information or to arrange a viewing

Tel: 93 528 89 08

apropertiesbarcelona@aproperties.es

<https://www.aproperties.es>