

Eixample Dreta, Barcelona

REF. VB1404017



## Modernist jewel in Passeig de Gracia

### Features

- ✓ Views
- ✓ Heating
- ✓ Boxroom
- ✓ AACC
- ✓ Terrace
- ✓ Backyard
- ✓ Lift
- ✓ Concierge
- ✓ Has parking

Price

**Price upon request**

Surface

**700 m<sup>2</sup>**

Bedrooms

**4**

Bathrooms

**4**



**Located in a lovely and modernist estate of beginning of twentieth century by the architect Joaquim Codina Matalí, we find this stunning 700sqm flat with a terrace of 300sqm.**

The property presents modernist finishes in ceilings, floors and windows. The current owners made a complete renovation throughout the house taking care of all the details. The property is laid out in two areas, the hall area with elegant living rooms and two galleries over Paseo de Gracia, study and fully equipped kitchen. The private area with hardwoods consists of a library / study with access to a beautiful garden. It is in the private area where we also find a large suite with

bathroom and dressing room, two bedrooms en suite and an apartment with a separate entrance for the servants. Due to its characteristic, this property can be used for housing, corporate headquarters or for a consulate. It has two parking spaces for four cars on the estate. This is a jewel of modernist style for the most exclusive customers.

**Contact us,**  
we will be happy to assist you,  
to offer you more details and information.

Eixample Dreta, Barcelona

REF. VB1404017





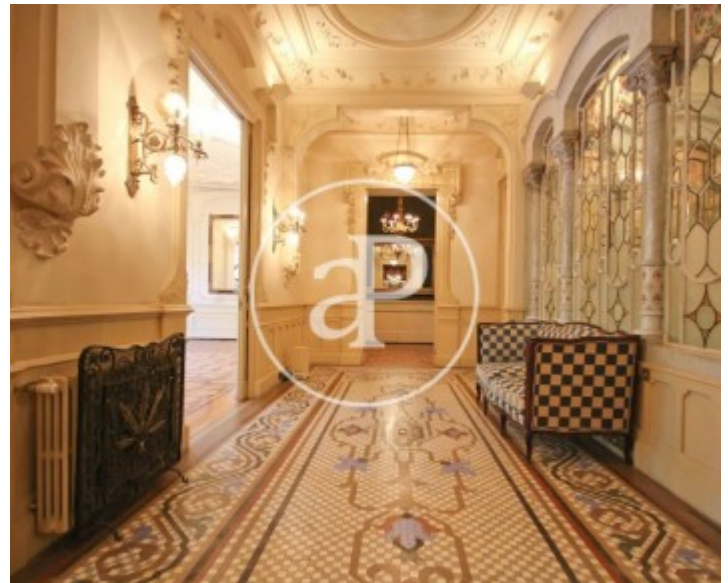


APROPERTIES  
REAL ESTATE

Paseo de Gracia 85  
08008 Barcelona  
T. 93 528 89 08  
[www.aproperties.es](http://www.aproperties.es)

Eixample Dreta, Barcelona

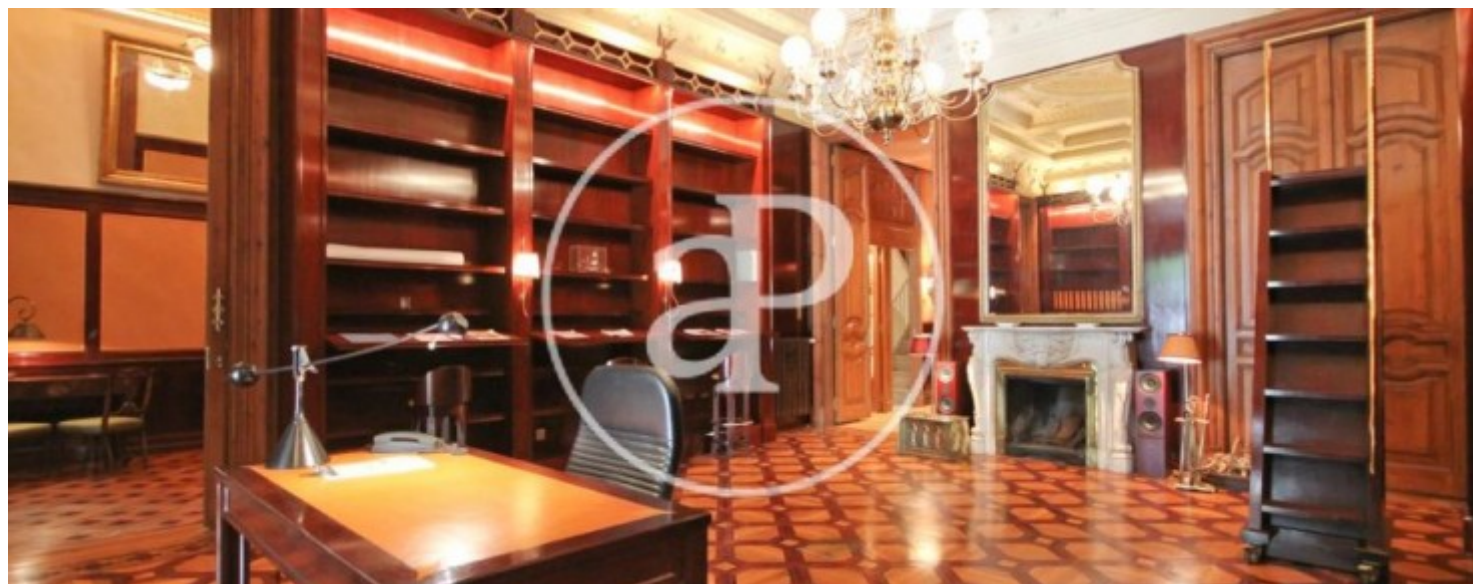
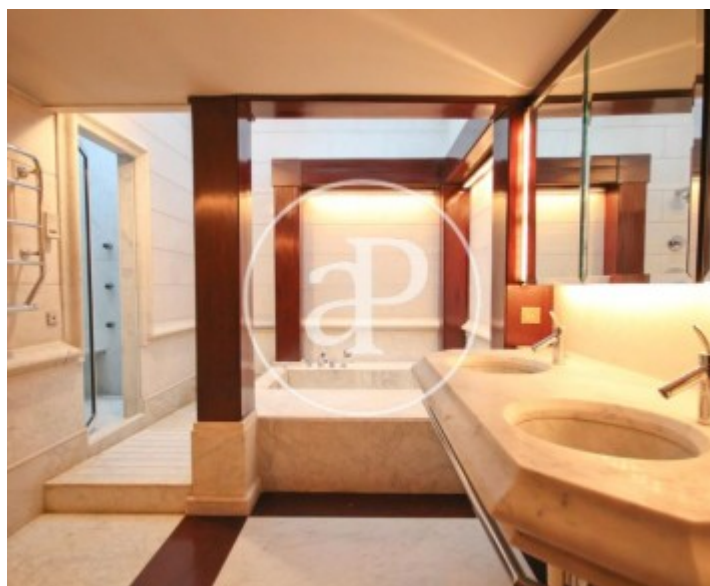
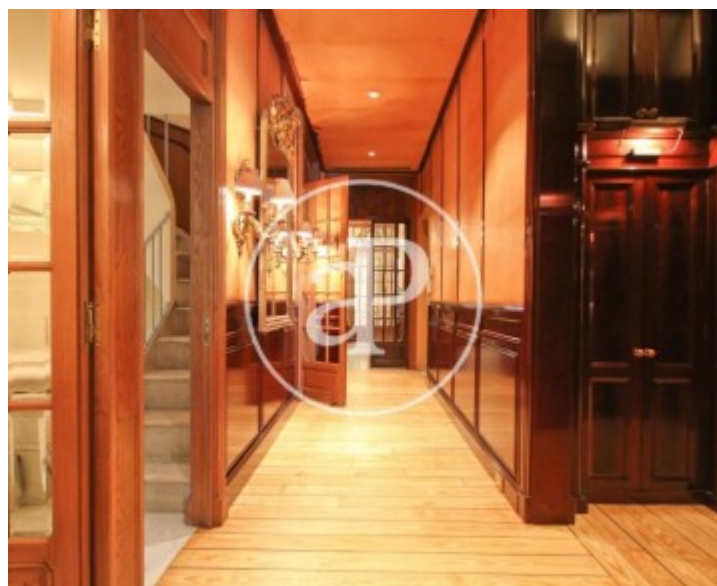
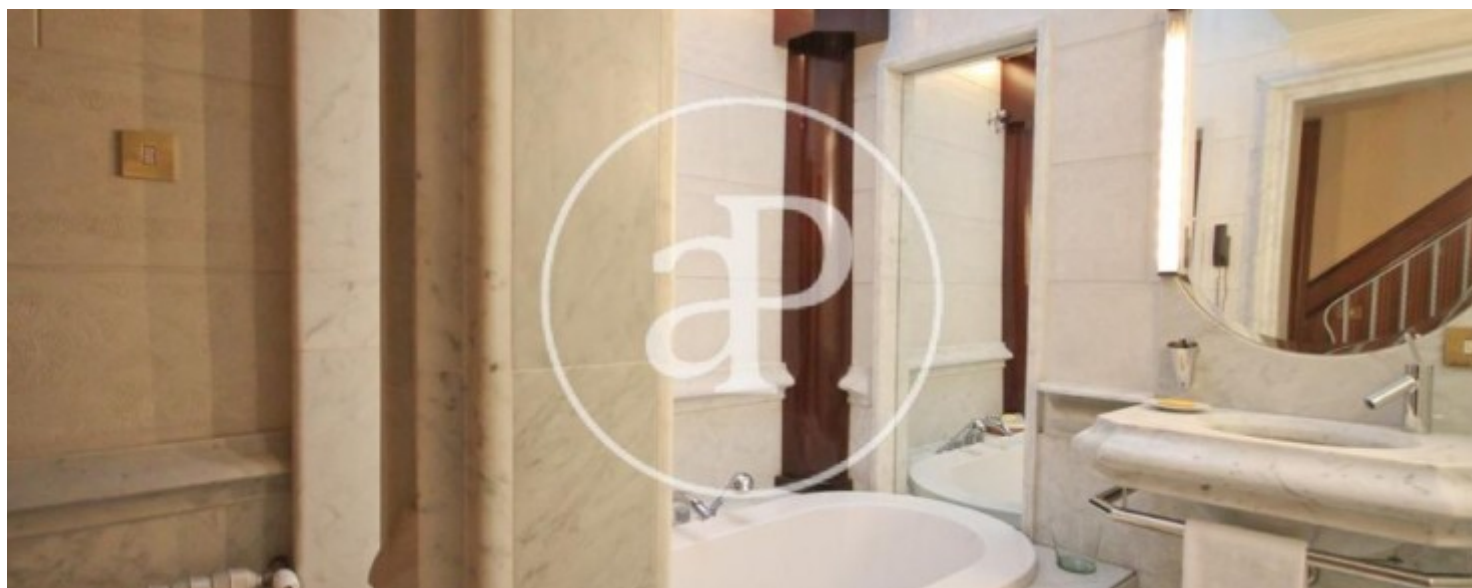
REF. VB1404017





Eixample Dreta, Barcelona

REF. VB1404017







**APROPERTIES**  
REAL ESTATE

Paseo de Gracia 85  
08008 Barcelona  
T. 93 528 89 08  
[www.aproperties.es](http://www.aproperties.es)

Eixample Dreta, Barcelona

REF. VB1404017



The information about any property is not binding to any offer or contract. Any verbal or written declaration made by aProperties with regards to the value or condition of the property should not be considered accurate or factual. The pictures make reference to some parts of the property at the times that they were taken. The areas, dimensions and distances that are given are approximate and should be checked by the client. The images are computer generated and are just an approximate indication of the real appearance of the property; these may change at any time. The information with regards to the property may also change at any time.



For **more information** or  
to make an appointment

[apropertiesbarcelona@aproperties.es](mailto:apropertiesbarcelona@aproperties.es)  
Tel: 93 528 89 08  
[www.aproperties.es](http://www.aproperties.es)