

Eixample Dreta, Barcelona

REF. ABIX2203027-1

Unfurnished flat with terrace in Eixample Dreta

Features

- ✓ Heating
- ✓ Terrace
- ✓ Boxroom
- ✓ Lift

Price

4,700 €

Surface

300 m²

Bedrooms

4

Bathrooms

3



The property is located in Eixample Dreta, an exclusive neighbourhood with a wide range of shops, restaurants and museums.

It is very well connected to the rest of the city by public transport, and is just a few minutes walk from the most emblematic streets and squares of the city of Barcelona, such as Paseo de Gracia, Plaza Catalunya, Paseo San Juan and Ciutadella Park. Situated in a modernist building, catalogued from the beginning of the century, this fabulous flat has 300sqm with 100sqm of terrace. Originally the stately floor of the building. The day area consists of a spacious and bright living/dining room with office area and access to a south facing

terrace, equipped with sun loungers and dining area. The kitchen, separated from the other rooms, is fully equipped and has a service loft, which can be used as a bedroom or office, as well as a utility room. The night area consists of four double bedrooms, two exterior and two interior, with built-in wardrobes, two of them en suite with shower and a third complete bathroom with bathtub. It has gas heating and parquet floors. Can you imagine living here? * In compliance with Law 12/2023 and Law 18/2007, we inform that Index of R.P.LL: 15,74 € / m2

Contact us,
we will be happy to assist you,
to offer you more details and information.

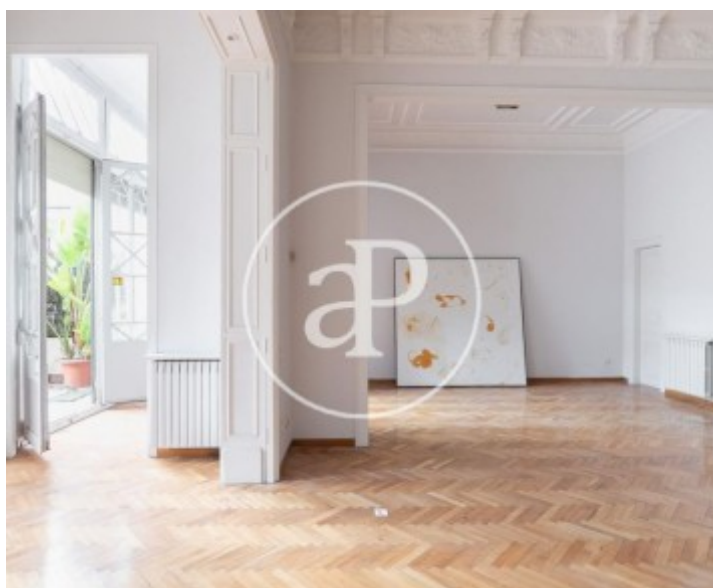
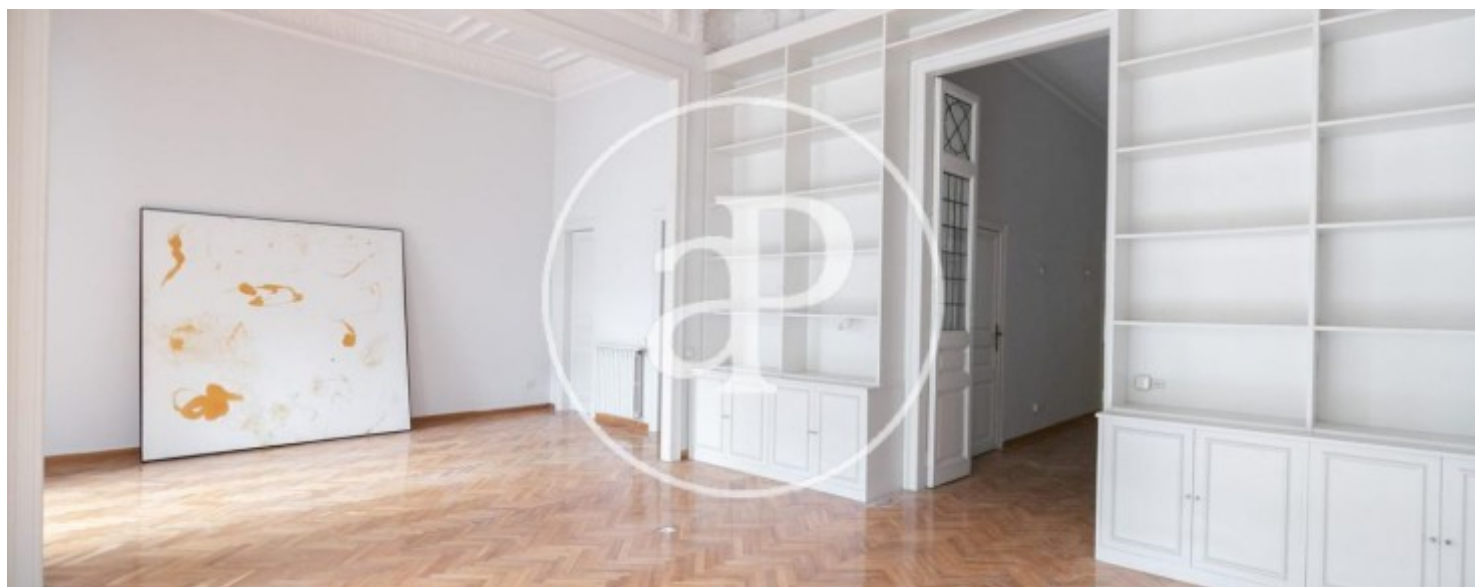
Eixample Dreta, Barcelona

REF. ABIX2203027-1



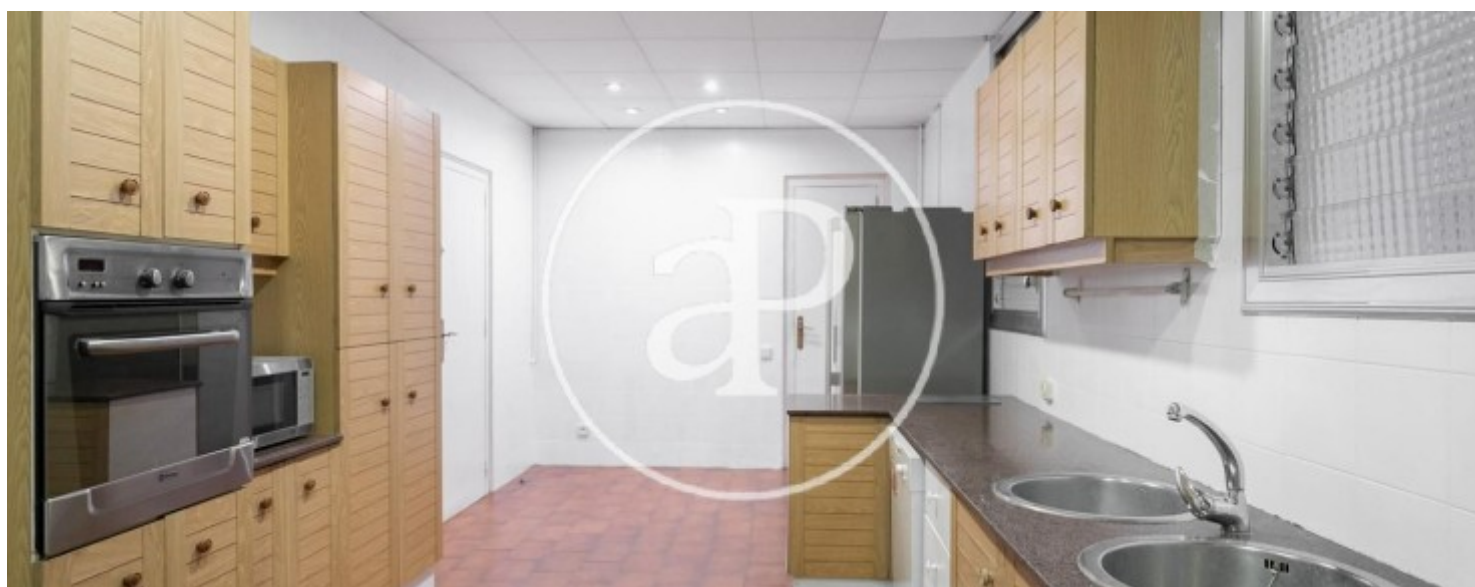
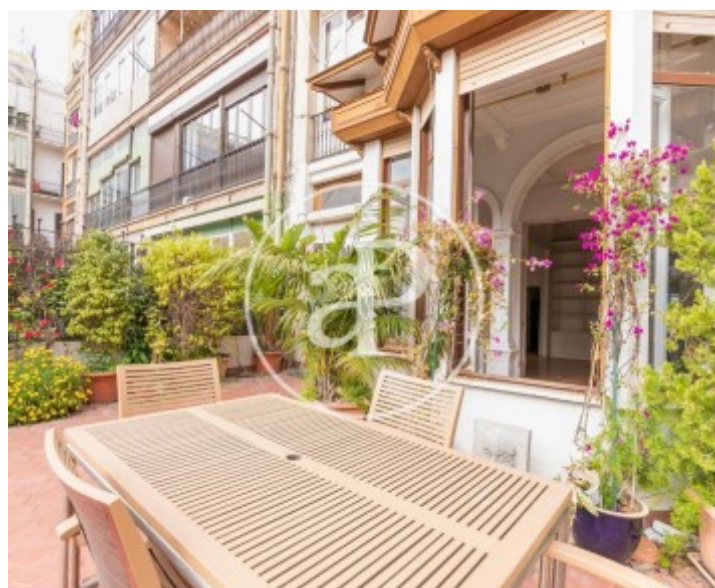
Eixample Dreta, Barcelona

REF. ABIX2203027-1



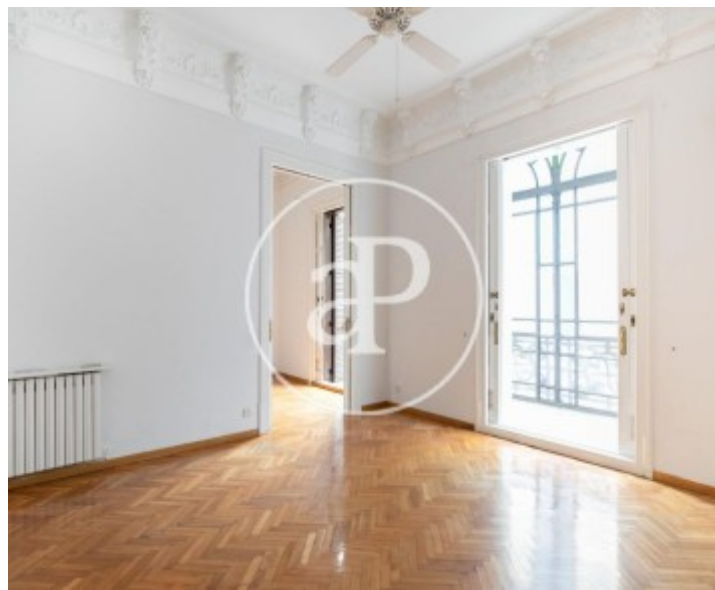
Eixample Dreta, Barcelona

REF. ABIX2203027-1



Eixample Dreta, Barcelona

REF. ABIX2203027-1



The information about any property is not binding to any offer or contract. Any verbal or written declaration made by aProperties with regards to the value or condition of the property should not be considered accurate or factual. The pictures make reference to some parts of the property at the times that they were taken. The areas, dimensions and distances that are given are approximate and should be checked by the client. The images are computer generated and are just an approximate indication of the real appearance of the property; these may change at any time. The information with regards to the property may also change at any time.

For **more information** or
to make an appointment

apropertiesbarcelona@aproperties.es
Tel: 93 528 89 08
www.aproperties.es