

Eixample Dreta, Barcelona

REF. VB2510019

Penthouse for sale on Carrer de Sardenya

Features

- ✓ Views
- ✓ Furnished
- ✓ AACC
- ✓ Pool
- ✓ Has parking
- ✓ Heating
- ✓ Boxroom
- ✓ Terrace
- ✓ Lift

Surface

67 m²

Bedrooms

2

Bathroom

1



Price

750,000 €

We present this exclusive, fully exterior penthouse, completely renovated in 2019, located on a real 7th floor with a panoramic glass elevator and a private-use terrace.

As soon as you enter, you'll notice the apartment's personality and brightness. It is distributed into 2 double bedrooms (one spacious, the other smaller), a full bathroom with shower, a living-dining room with access to a southwest-facing balcony, an open-plan fully equipped kitchen, and an interior balcony of 2 m² used as a laundry area. The natural parquet flooring and Catalan vaulted ceilings add a special warmth throughout the home. All furniture, both indoor and terrace, is

included. Additionally, it features a private storage room. Heating and cooling are provided through ducted air conditioning. In addition to the building's panoramic elevator, the penthouse enjoys a private elevator leading to its 44 m² private terrace on the upper floor, also accessible via the building's staircase. All terrace furniture is from Arboletum brand and includes two loungers, a dining table, a pergola with electric awning, chillout area, and automatic irrigation system. The views from this terrace are stunning, and there's also a 2x2 pool perfect for...

Contact us,
we will be happy to assist you,
to offer you more details and information.

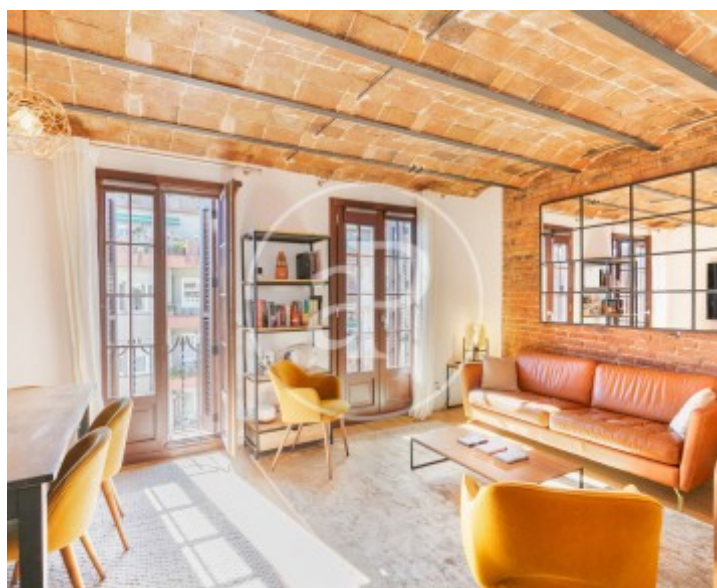
Eixample Dreta, Barcelona

REF. VB2510019



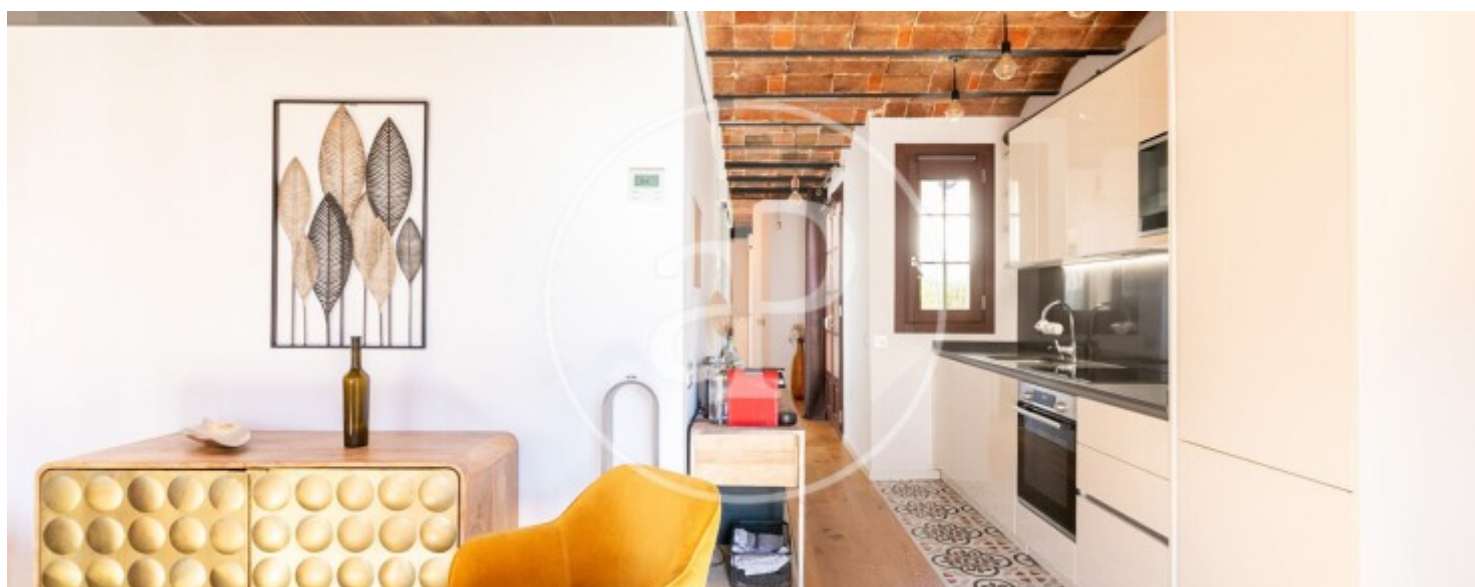
Eixample Dreta, Barcelona

REF. VB2510019



Eixample Dreta, Barcelona

REF. VB2510019



Eixample Dreta, Barcelona

REF. VB2510019



The information about any property is not binding to any offer or contract. Any verbal or written declaration made by aProperties with regards to the value or condition of the property should not be considered accurate or factual. The pictures make reference to some parts of the property at the times that they were taken. The areas, dimensions and distances that are given are approximate and should be checked by the client. The images are computer generated and are just an approximate indication of the real appearance of the property; these may change at any time. The information with regards to the property may also change at any time.

For **more information** or
to make an appointment

apropertiesbarcelona@aproperties.es
Tel: 93 528 89 08
www.aproperties.es