



Eixample Dreta, Barcelona

REF. AB2602007

# Apartment for rent in l'Eixample Dreta

## Features

- ✓ Views
- ✓ Heating
- ✓ AACC
- ✓ Lift

Surface

**254 m<sup>2</sup>**

Bedrooms

**5**

Bathrooms

**2**

Price

**3,850 €**



**AVAILABLE FROM MARCH 6TH** This property is located in the sought-after area of l'Eixample Dreta, very close to Tetuan Square and the iconic Casa Burés.

It offers a total surface area of 200 sqm and features a balcony overlooking Carrer Girona. The building was designed by the renowned architect Enric Sagnier, known for other emblematic projects such as the Barcelona Customs House, the María y Jesús School, and the Palace of Justice, among many others. The daytime area features a spacious living room with a large window facing an inner courtyard, providing excellent natural light throughout the day. The living room retains its original ceiling

with unique finishes that add character and elegance. The kitchen has been fully renovated and is delivered without appliances. The night area comprises five double bedrooms, two of which include built-in wardrobes. One of the rooms offers versatility and can be used as a multifunctional space. Additionally, the apartment includes a mezzanine that can be used as a home office or storage area. The property features two fully renovated bathrooms, heating, and air conditioning in the living room. It enjoys excellent transport connections and is located just a few minutes from Tetuan metro station...

**Contact us,**  
we will be happy to assist you,  
to offer you more details and information.

Eixample Dreta, Barcelona

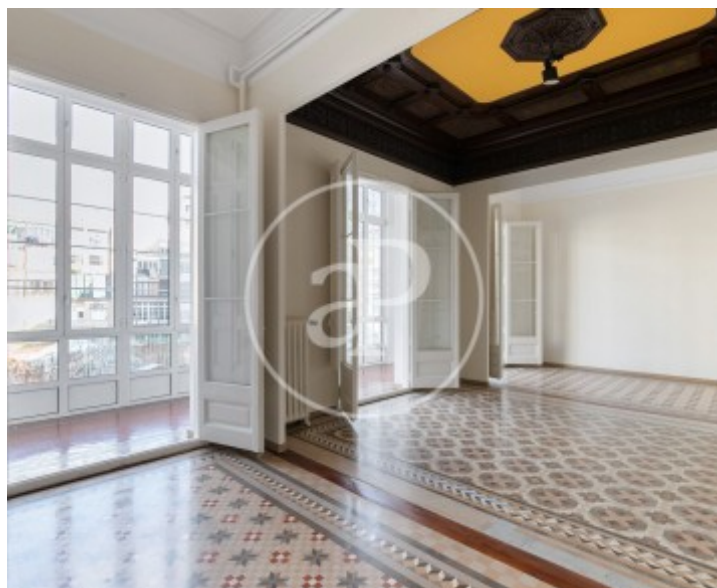
REF. AB2602007





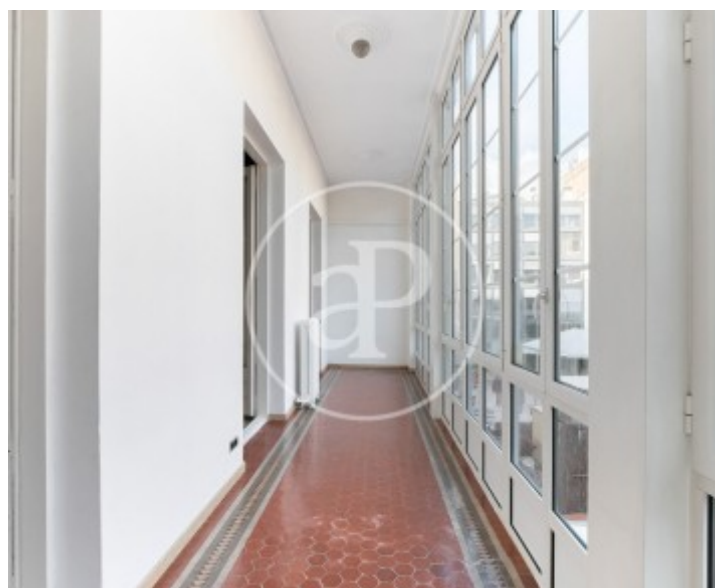
Eixample Dreta, Barcelona

REF. AB2602007



Eixample Dreta, Barcelona

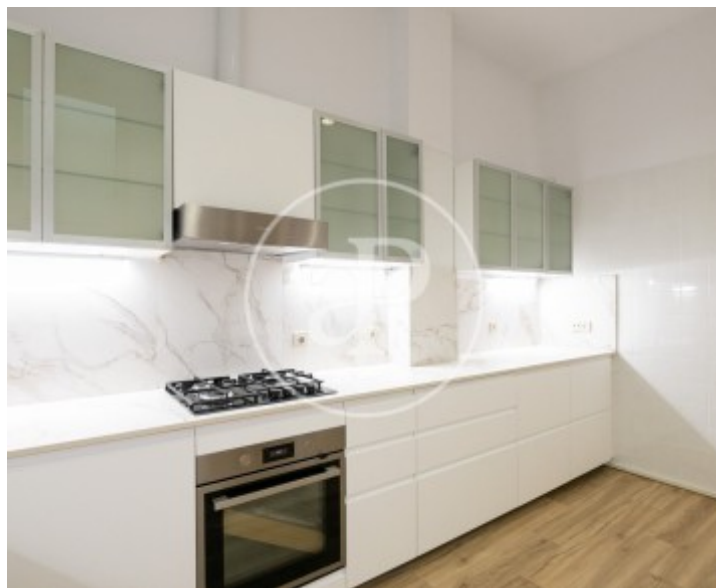
REF. AB2602007





Eixample Dreta, Barcelona

REF. AB2602007



The information about any property is not binding to any offer or contract. Any verbal or written declaration made by aProperties with regards to the value or condition of the property should not be considered accurate or factual. The pictures make reference to some parts of the property at the times that they were taken. The areas, dimensions and distances that are given are approximate and should be checked by the client. The images are computer generated and are just an approximate indication of the real appearance of the property; these may change at any time. The information with regards to the property may also change at any time.

For **more information** or  
to make an appointment

[apropertiesbarcelona@aproperties.es](mailto:apropertiesbarcelona@aproperties.es)  
Tel: 93 528 89 08  
[www.aproperties.es](http://www.aproperties.es)