

Eixample Dreta, Barcelona

REF. AB2605045

Apartment for rent on Rosselló with Passeig de Gràcia

Features

- ✓ Views
- ✓ Heating
- ✓ Boxroom
- ✓ AACC
- ✓ Terrace
- ✓ Lift
- ✓ Security
- ✓ Concierge

Surface

238 m²

Bedrooms

5

Bathrooms

3



Price

5,200 €

Immediate availability.

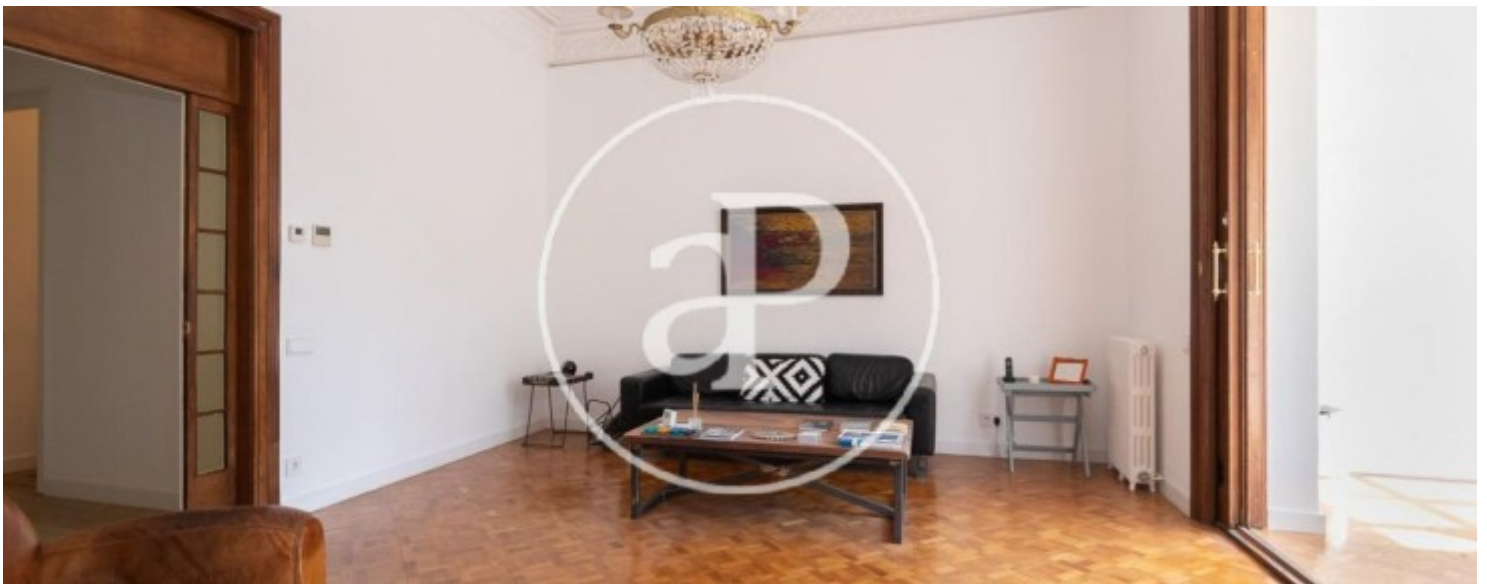
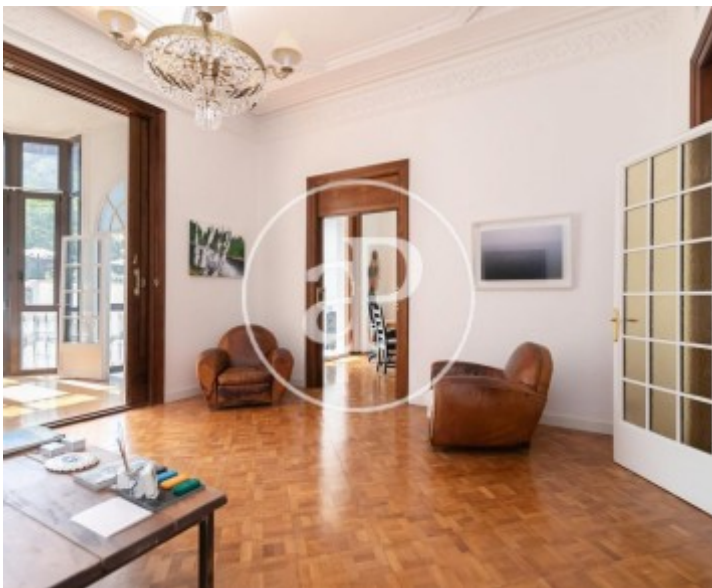
In the heart of Eixample, just a few meters from Diagonal and Passeig de Gràcia, we find this unfurnished 235 m² property with a beautiful terrace in a rear courtyard with abundant natural light. The apartment features five bedrooms, one of them en suite, two interior-facing, and the rest exterior-facing. The rooms have high ceilings with beautiful and complete modernist moldings. All bedrooms are double, except for one single room. This spacious apartment has an open and fully equipped kitchen, making it a very pleasant “social” space. At the rear, there is access to a bright back terrace, where you can enjoy an oasis

in the city center, with plenty of light and sunshine. This apartment is ideal for a family profile and is not suitable for sharing. The property is located on the principal floor of an impressive building. It features parquet flooring combined with hydraulic tile floors with beautiful mosaics. There is concierge service and an elevator. Long-term rental with two years of mandatory commitment. Can you imagine living here?* In compliance with Law 12/2023 and Law 18/2007, we hereby inform that:R.P.LL Index: 15,00 € / m2 There is no state reference certificate for rental prices applicable to t...

Contact us,
we will be happy to assist you,
to offer you more details and information.

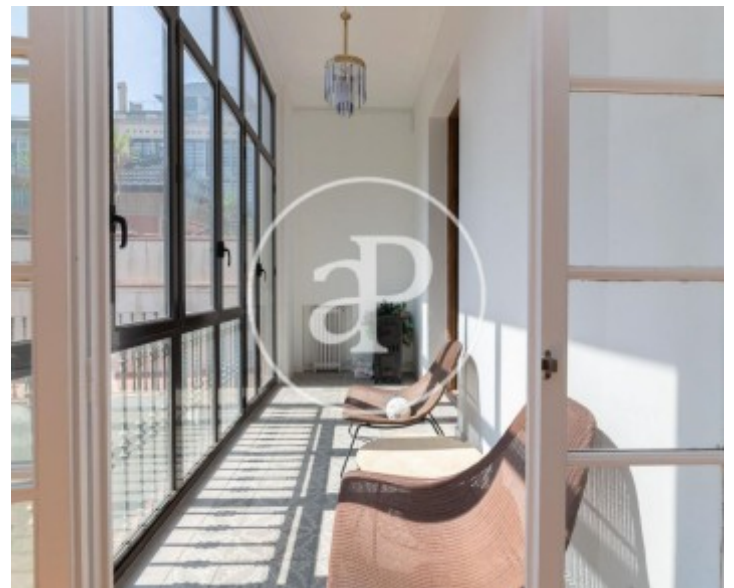
Eixample Dreta, Barcelona

REF. AB2605045



Eixample Dreta, Barcelona

REF. AB2605045



Eixample Dreta, Barcelona

REF. AB2605045



Eixample Dreta, Barcelona

REF. AB2605045



The information about any property is not binding to any offer or contract. Any verbal or written declaration made by aProperties with regards to the value or condition of the property should not be considered accurate or factual. The pictures make reference to some parts of the property at the times that they were taken. The areas, dimensions and distances that are given are approximate and should be checked by the client. The images are computer generated and are just an approximate indication of the real appearance of the property; these may change at any time. The information with regards to the property may also change at any time.

For **more information** or
to make an appointment

apropertiesbarcelona@aproperties.es
Tel: 93 528 89 08
www.aproperties.es