

Eixample Dreta, Barcelona

REF. VB1910029

Magnificent property located in one of the most emblematic buildings of Passeig de Gràcia

Features

- ✓ Views
- ✓ AACC
- ✓ Security
- ✓ Heating
- ✓ Lift
- ✓ Concierge

Price

2,240,000 €

Surface

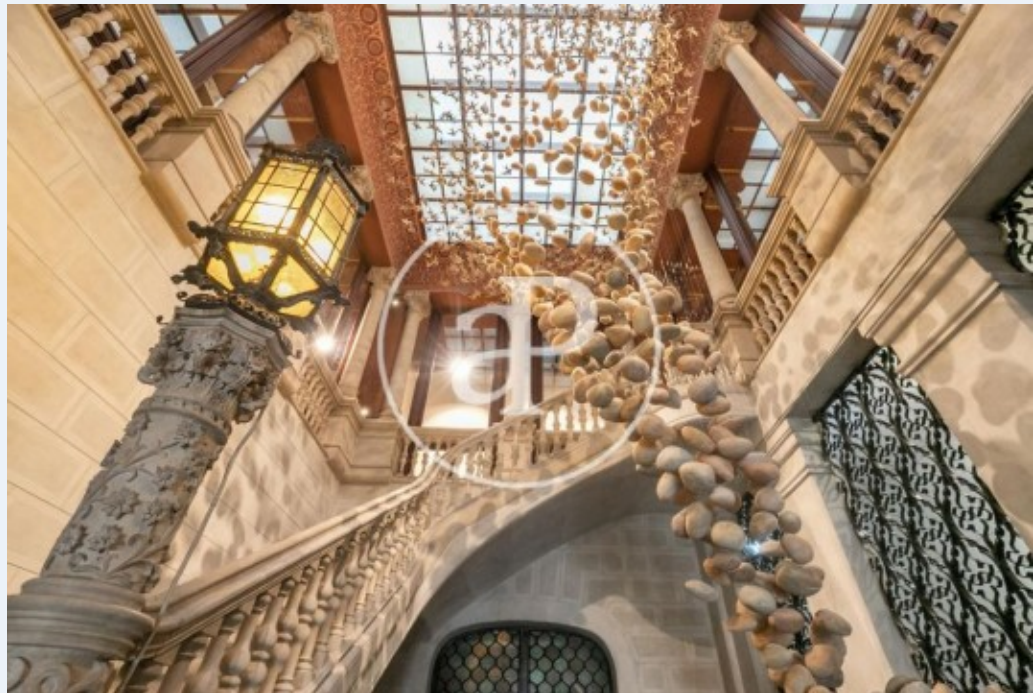
196 m²

Bedrooms

4

Bathrooms

3



The estate has an impressive porter's lodge, it was designed in 1898 by the prestigious architect Antoni Rovira i Ravasa and completely rehabilitated in 2017.

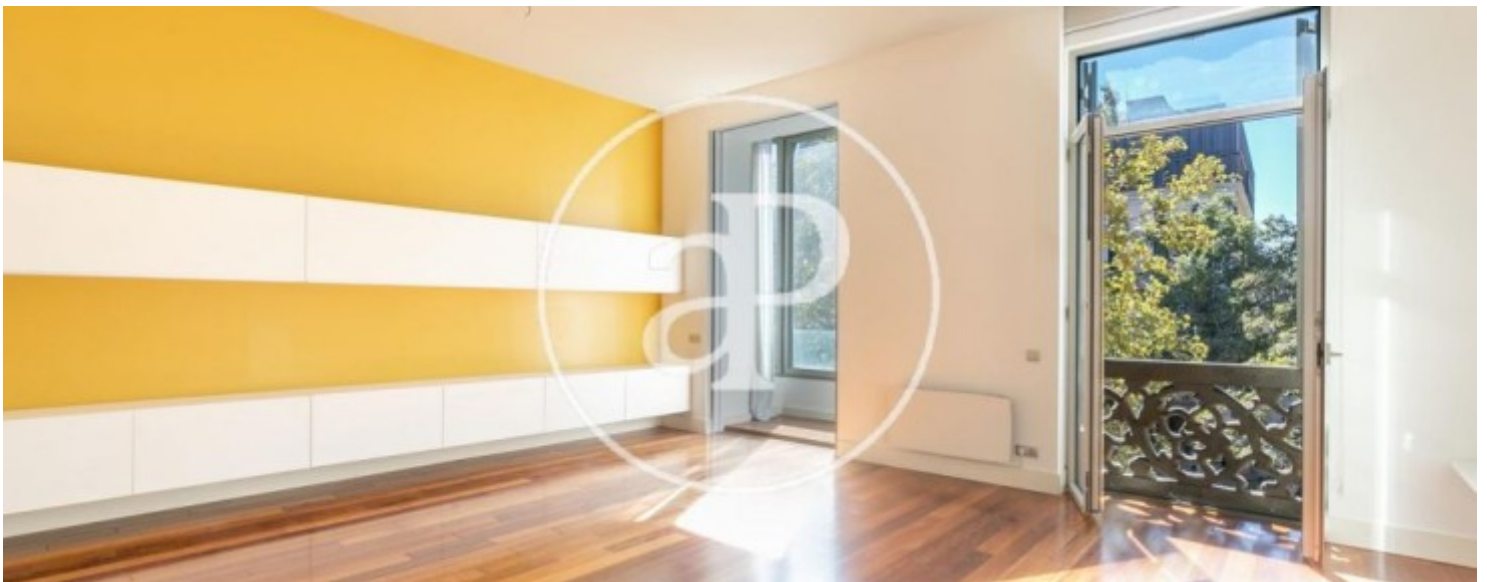
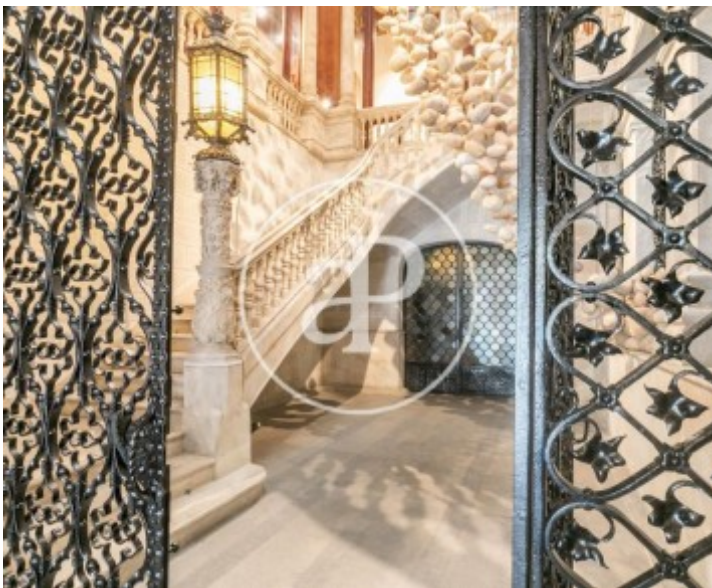
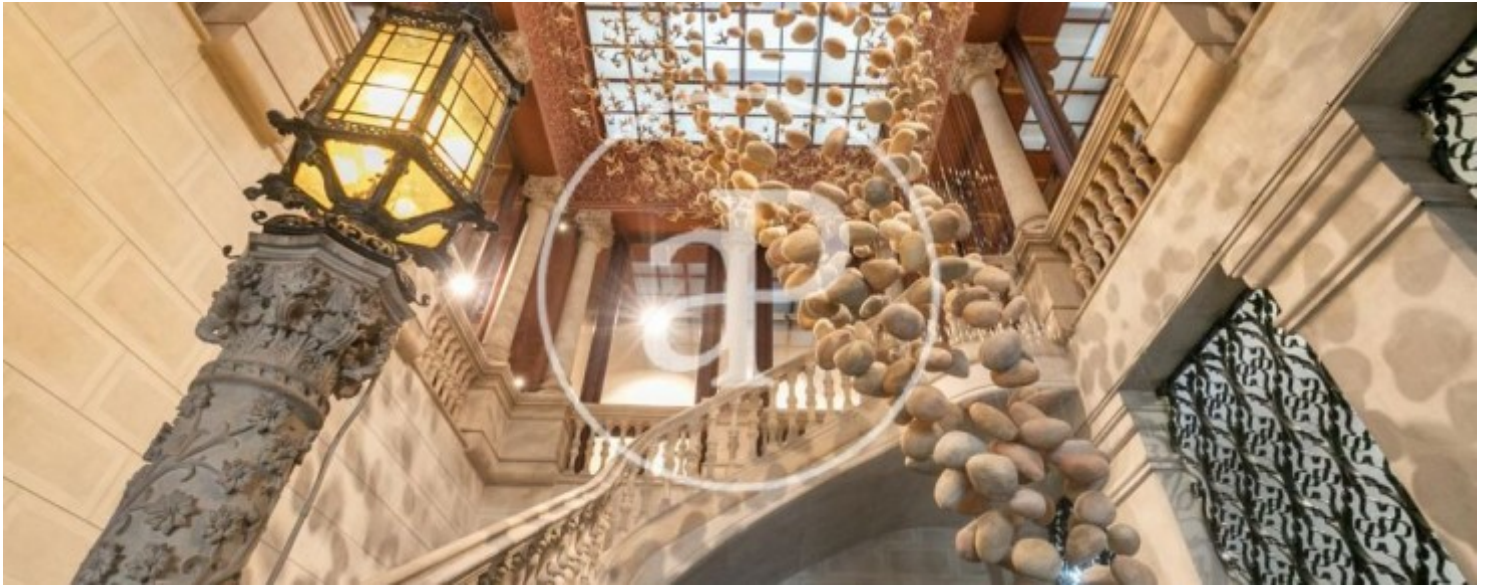
It is a jewel of Catalan modernism. Located on the same street as Gaudí's La Pedrera, it is surrounded by the most prestigious shops and restaurants in Barcelona as well as all the services and transport. The flat, in perfect state of conservation, consists of a wide hall, which gives way to a first bedroom with its own bathroom. Next we find two double bedrooms, very spacious and with an attic each, which share a bathroom. And finally, a large master suite with dressing room, bathroom with shower and

bath, and a wonderful balcony to Passeig de Gràcia. The day area has a large living room, with exterior balconies and fantastic views of the prestigious avenue as well as a large and bright kitchen next to the living room, fully equipped. The building has concierge service and 24h security.

Contact us,
we will be happy to assist you,
to offer you more details and information.

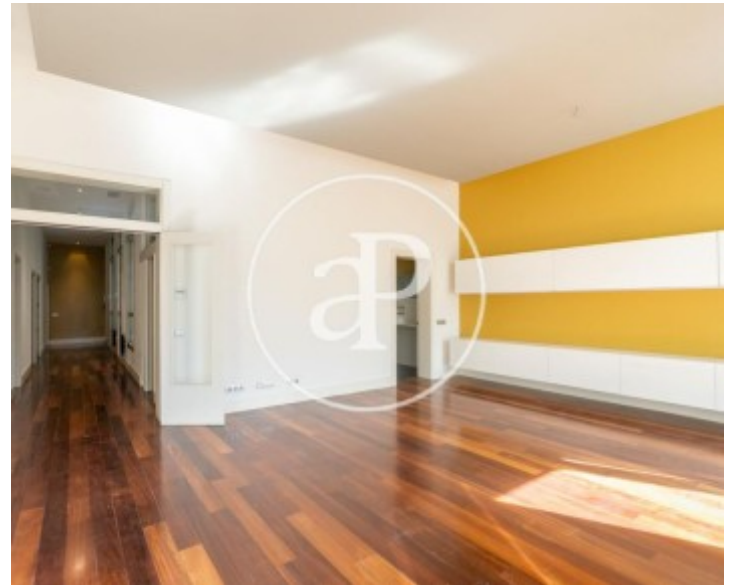
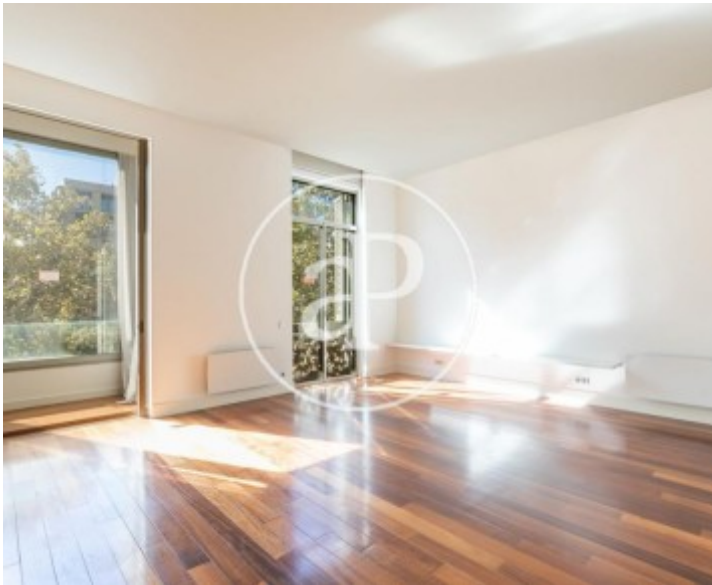
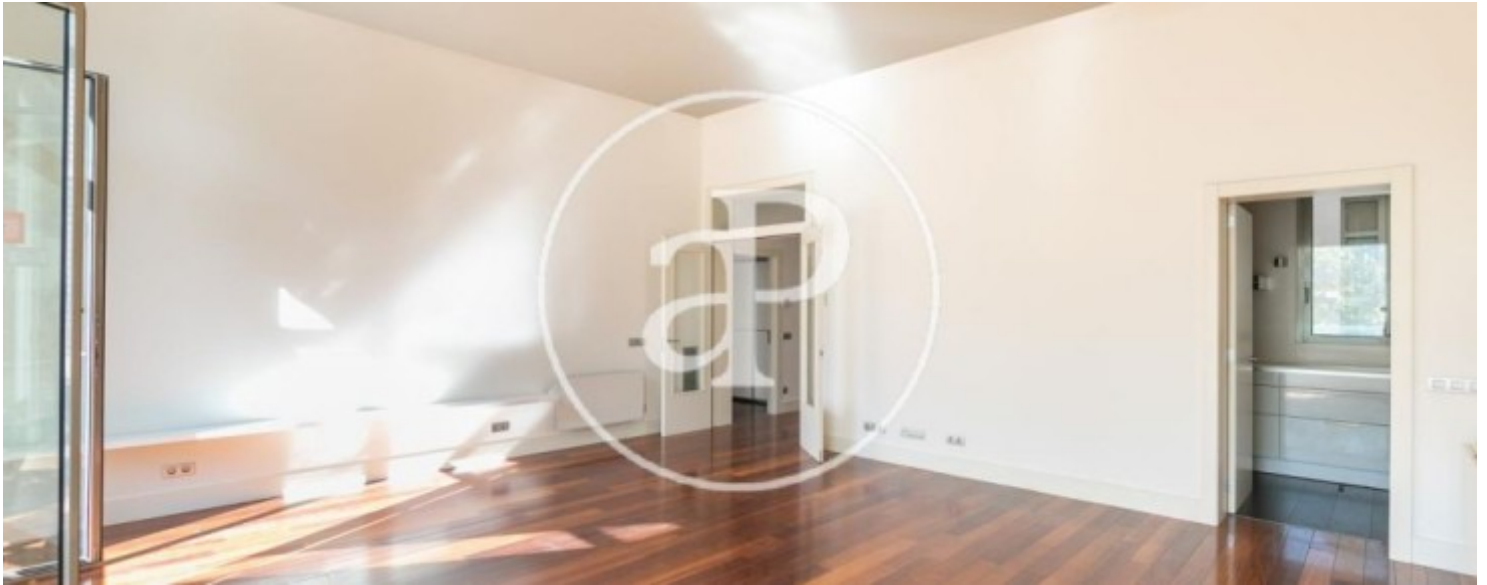
Eixample Dreta, Barcelona

REF. VB1910029



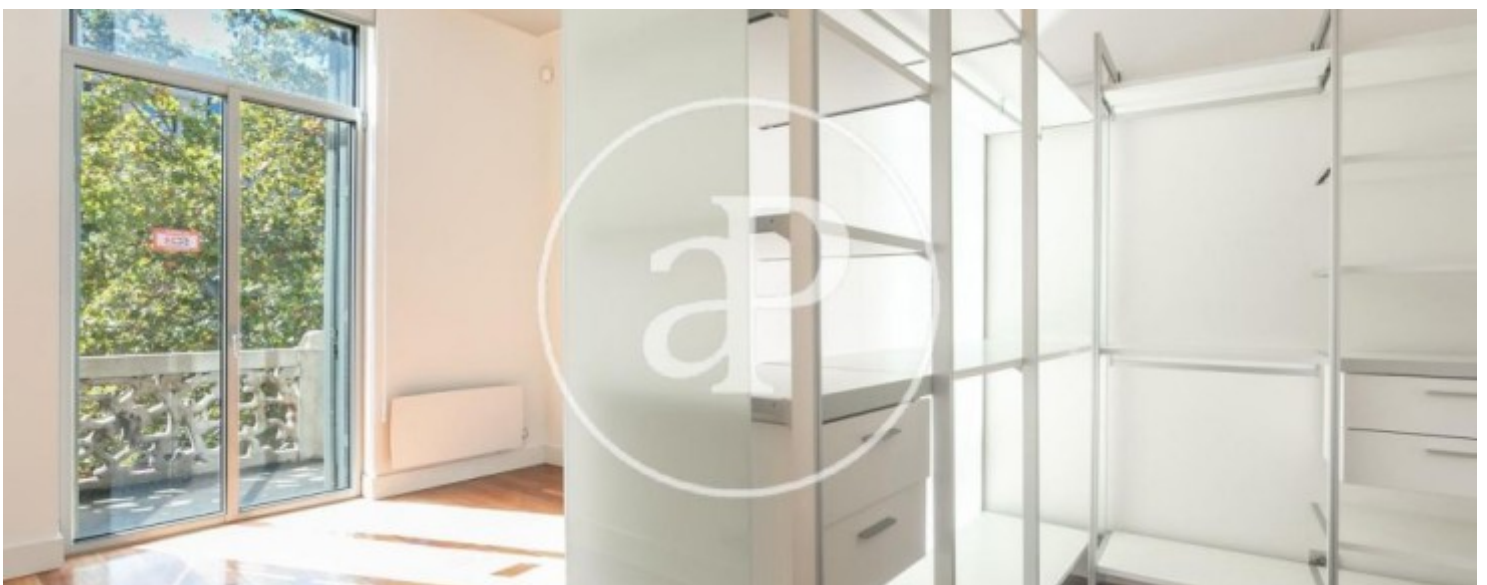
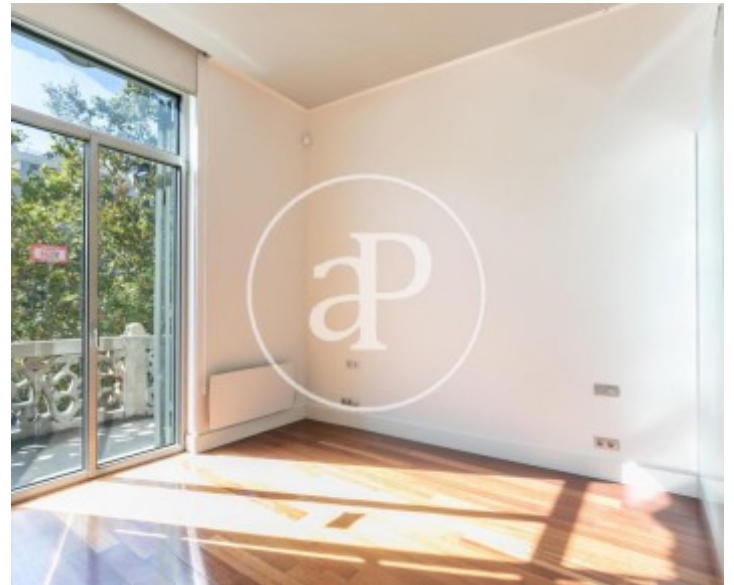
Eixample Dreta, Barcelona

REF. VB1910029



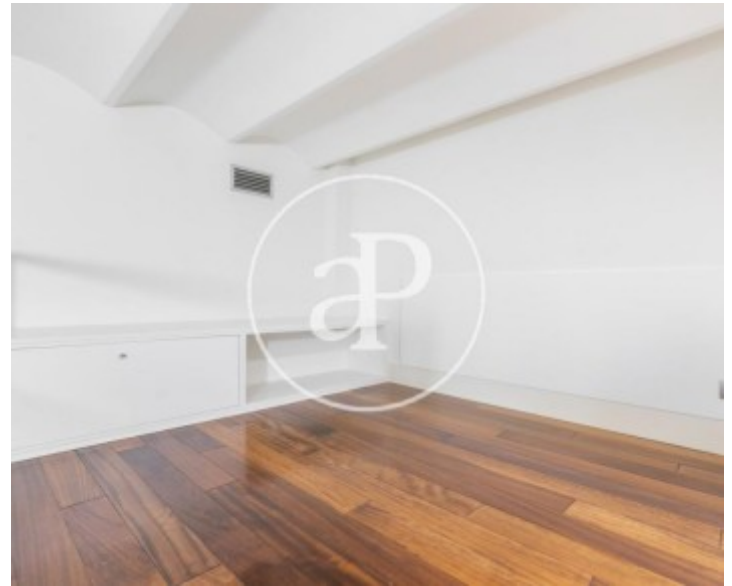
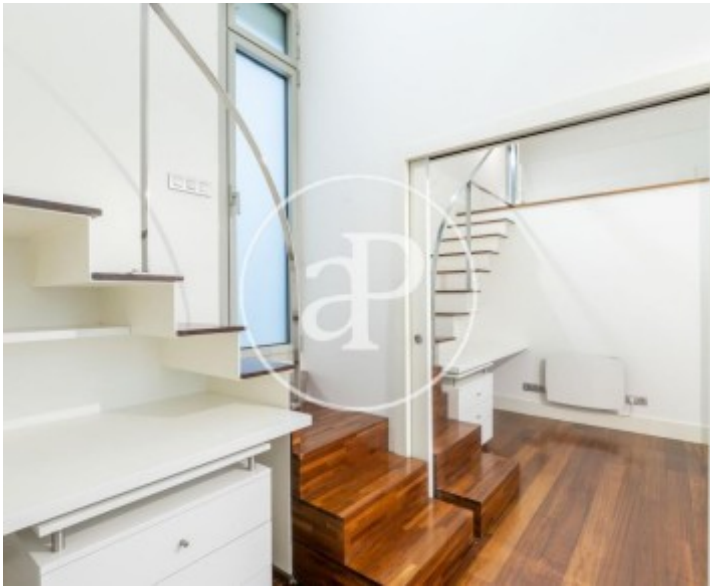
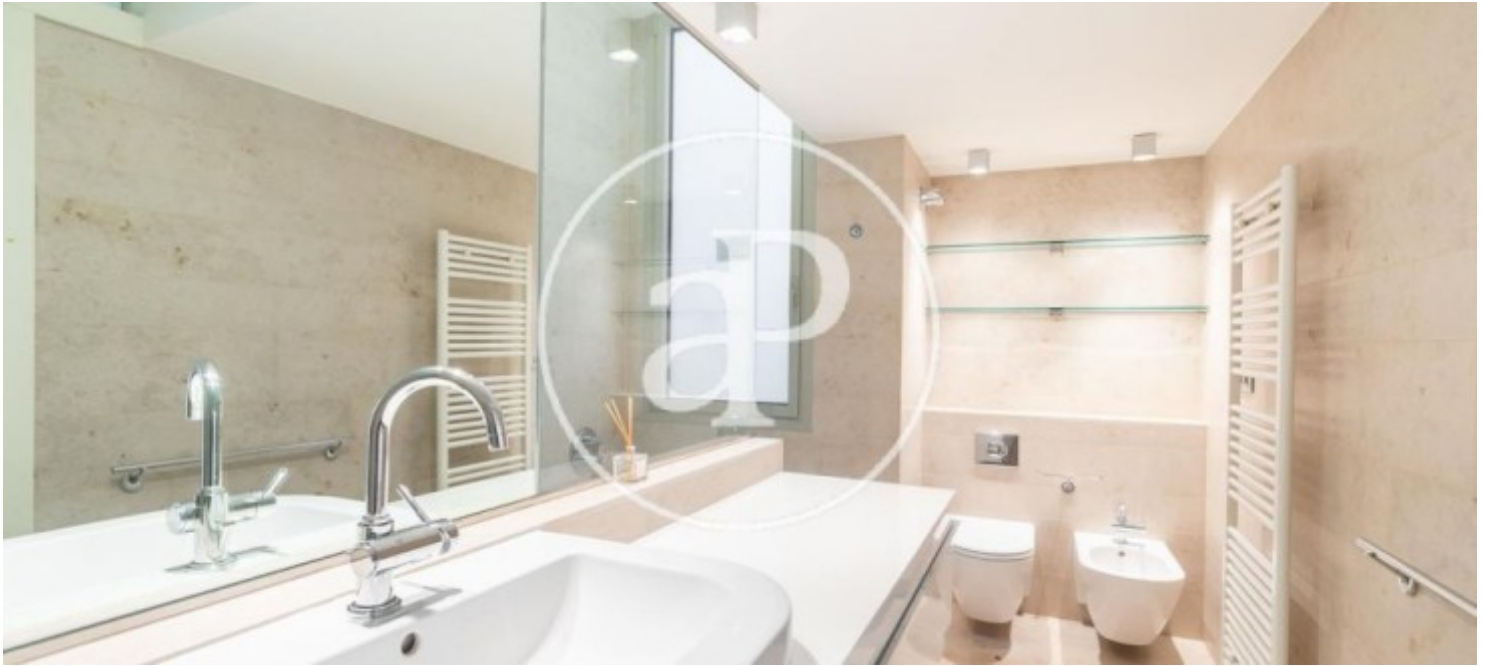
Eixample Dreta, Barcelona

REF. VB1910029



Eixample Dreta, Barcelona

REF. VB1910029



The information about any property is not binding to any offer or contract. Any verbal or written declaration made by aProperties with regards to the value or condition of the property should not be considered accurate or factual. The pictures make reference to some parts of the property at the times that they were taken. The areas, dimensions and distances that are given are approximate and should be checked by the client. The images are computer generated and are just an approximate indication of the real appearance of the property; these may change at any time. The information with regards to the property may also change at any time.

For **more information** or
to make an appointment

apropertiesbarcelona@aproperties.es
Tel: 93 528 89 08
www.aproperties.es