

Eixample Dreta, Barcelona

REF. ABIX2212061

Flat for rent in Eixample Dreta (Barcelona)

Features

- ✓ Heating
- ✓ AACC
- ✓ Concierge
- ✓ Furnished
- ✓ Lift

Price
3,950 €

Surface
172 m²

Bedrooms
4

Bathrooms
2



Spectacular flat of 172 metres and 4 bedrooms in the centre of Eixample Dreta with views to Casa Mila.

The flat has the best high quality finishes. The day area of the flat consists of a spacious entrance hall, a bright living room, a separate dining room with direct access to the kitchen, and a fully equipped kitchen with quality appliances. The flat is composed of a single bedroom, a complete bathroom with shower and a dressing room that can also be used as an additional pantry. In the night area we find three bedrooms with views to La Pedrera, one double en suite with a complete bathroom with shower and two more doubles with built-in wardrobes, as well as another

double bedroom exterior to the interior of the block with a large independent dressing room. There is a utility room equipped with washing machine and dryer. The flat has gas heating and splits. Spectacular location right in front of La Pedrera, one of Antoni Gaudí's most emblematic works, in the Eixample dreta neighbourhood, very close to the luxury shops of Paseo de Gracia, numerous restaurants and emblematic shops. The property has a lift and concierge. Immediate availability for temporary contract from 6 to 11 months. Can you imagine living here?* In compliance with Law 12/2023...

Contact us,
we will be happy to assist you,
to offer you more details and information.

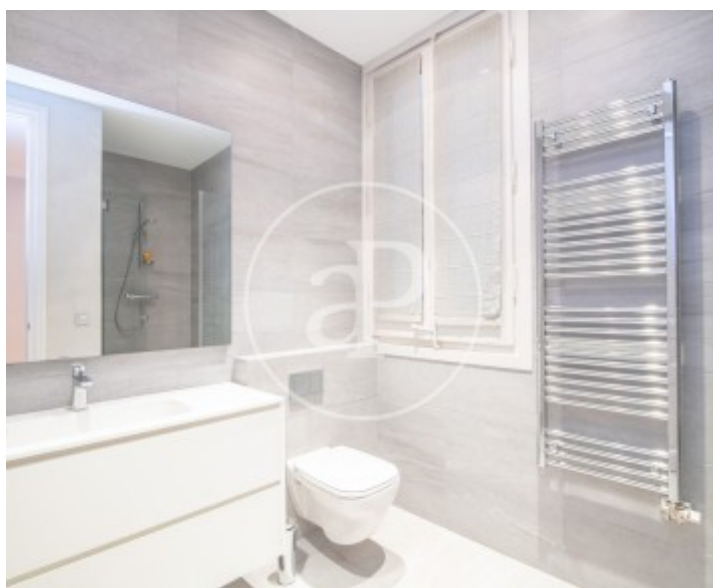
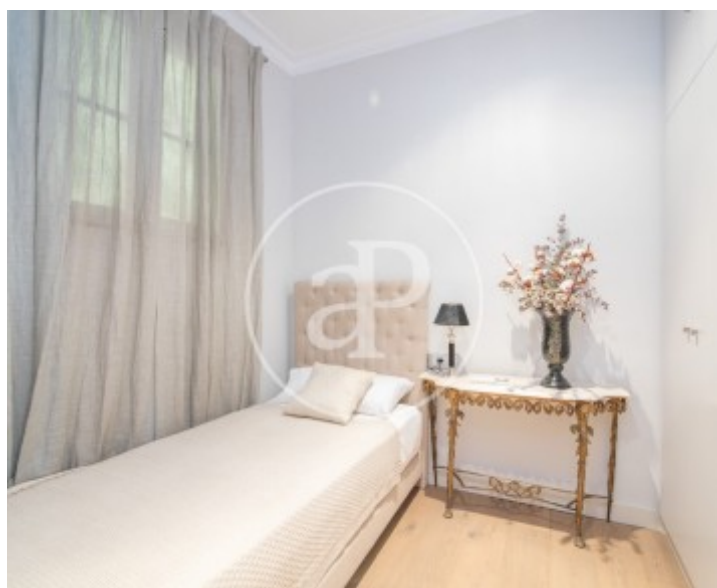
Eixample Dreta, Barcelona

REF. ABIX2212061



Eixample Dreta, Barcelona

REF. ABIX2212061



Eixample Dreta, Barcelona

REF. ABIX2212061



Eixample Dreta, Barcelona

REF. ABIX2212061



The information about any property is not binding to any offer or contract. Any verbal or written declaration made by aProperties with regards to the value or condition of the property should not be considered accurate or factual. The pictures make reference to some parts of the property at the times that they were taken. The areas, dimensions and distances that are given are approximate and should be checked by the client. The images are computer generated and are just an approximate indication of the real appearance of the property; these may change at any time. The information with regards to the property may also change at any time.

For **more information** or
to make an appointment

apropertiesbarcelona@aproperties.es
Tel: 93 528 89 08
www.aproperties.es