



(Eixample Dreta)

Ref: ONB2508008-U



## *Penthouse Duplex with Private Terraces and Open Views*

This magnificent brand-new penthouse duplex offers a unique residential experience thanks to its contemporary design, private terraces with unobstructed views, and a privileged location. The property occupies the top floor of a fully refurbished classic building in the heart of Eixample Derecho, just steps from Passeig de Gràcia. With 145 m<sup>2</sup> built plus more than 68 m<sup>2</sup> of terraces, the apartment features a bright main floor with a living area, open kitchen with central island, two double bedrooms (both with ensuite bathrooms), and an exterior balcony. The upper level hosts the spectacular private terrace, perfect for sunbathing, enjoying outdoor dinners, or simply admiring Barcelona's skyline. Outstanding features: Bulthaup kitchen with Neff appliances Natural wood flooring Bathrooms fitted with Duravit and Hansgrohe Energy-efficient aerothermal climate system Advanced insulated exterior carpentry LED lighting, built-in wardrobes, and designer finishes Access via modern elevator Perfect for those who value privacy, outdoor living, design, and an iconic location with all services and transport just steps away. An unrepeatable home to experience Barcelona from above. Contact us to view it in person.

Barcelona / Eixample Dreta

Unit 4 2<sup>a</sup>

Completion Q3 2025

### FEATURES

Surface 145 m<sup>2</sup> / 68 m<sup>2</sup> terrace

2 Rooms

2 Toilets 1 Restrooms

- ✓ Views
- ✓ Heating
- ✓ AACC
- ✓ Terrace
- ✓ Lift
- ✓ Security
- ✓ Concierge



(Eixample Dreta)

Ref: ONB2508008-U





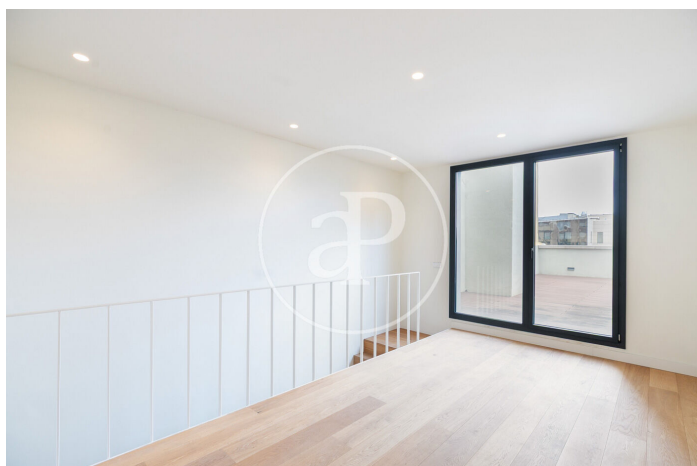
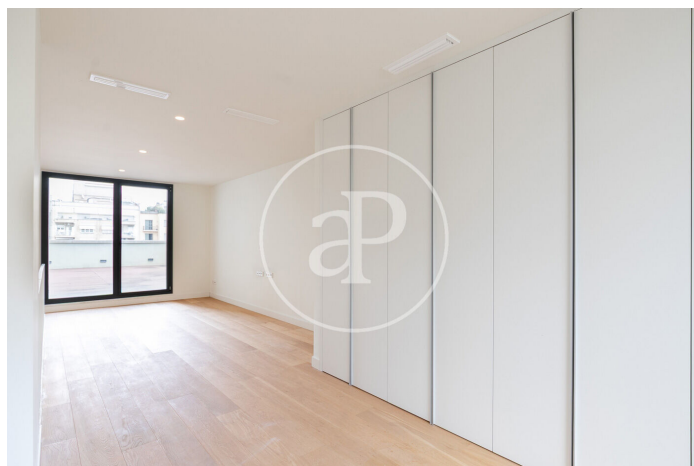
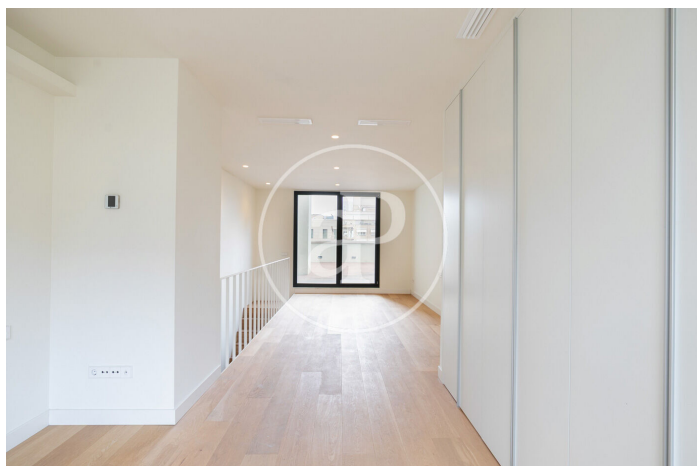
(Eixample Dreta)

Ref: ONB2508008-U



(Eixample Dreta)

Ref: ONB2508008-U



The information about any property is not binding to any offer or contract. Any verbal or written declaration made by aProperties with regards to the value or condition of the property should not be considered accurate or factual. The pictures make reference to some parts of the property at the times that they were taken. The areas, dimensions and distances that are given are approximate and should be checked by the client. The images are computer generated and are just an approximate indication of the real appearance of the property; these may change at any time. The information with regards to the property may also change at any time.

Contact us today for more information or to arrange a viewing

Tel: 93 528 89 08 [apropertiesbarcelona@aproperties.es](mailto:apropertiesbarcelona@aproperties.es) <https://www.aproperties.es>