

Eixample Dreta, Barcelona

REF. VB2310025

# Flat for sale with Terrace in Eixample Dreta (Barcelona)

## Features

- ✓ Heating
- ✓ Terrace
- ✓ AACC
- ✓ Lift

Surface  
**104 m<sup>2</sup>**

Bedrooms  
**2**

Bathroom  
**1**

Price  
**583,000 €**



In one of the most demanded areas of the city of Barcelona, and in a wonderful royal estate of 1901 with elevator, designed by modernist and prestigious architects, Joan Alsina i Arús and Salvador Oller i Perol, we find this beautiful penthouse of 104m2, in perfect state of conservation, with a terrace of 10m2 facing south, currently rented until January 2024. Joan Alsina I Arús, collaborated and was a disciple of Don ANTONI GAUDI, who was mainly focused on the Sagrada Familia and with Don Lluís Domènech i Montaner, who was head of the Municipal Section of Parks and Gardens of the City Council of Barcelona, so the design, tribune and details of the building, enhance the modernism and culture of the Catalan bourgeoisie of the time. The building has a beautiful and imposing

entrance, with large wooden doors and wrought iron, which give access to the hall, very well maintained, with marble stairs and coffered railings. Entering the house, on the left hand side we find the bathroom, renovated and complete, with shower and a window overlooking the inner courtyard, perfect for ventilation. Continuing down the hallway to the left, we have the American style kitchen, with a bar and two stools, and all the necessary appliances to make it complete and very utilitarian. In front, we have the master bedroom, double and with lots of light, thanks to its window that...

**Contact us,**  
we will be happy to assist you,  
to offer you more details and information.

Eixample Dreta, Barcelona

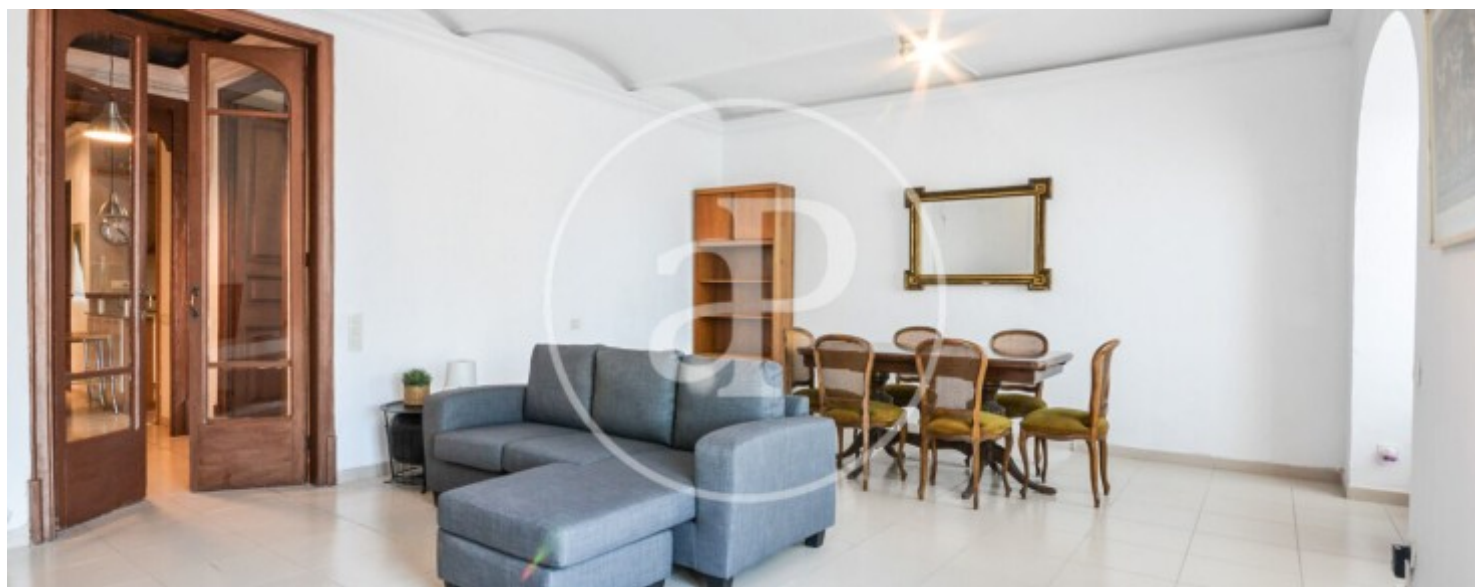
REF. VB2310025





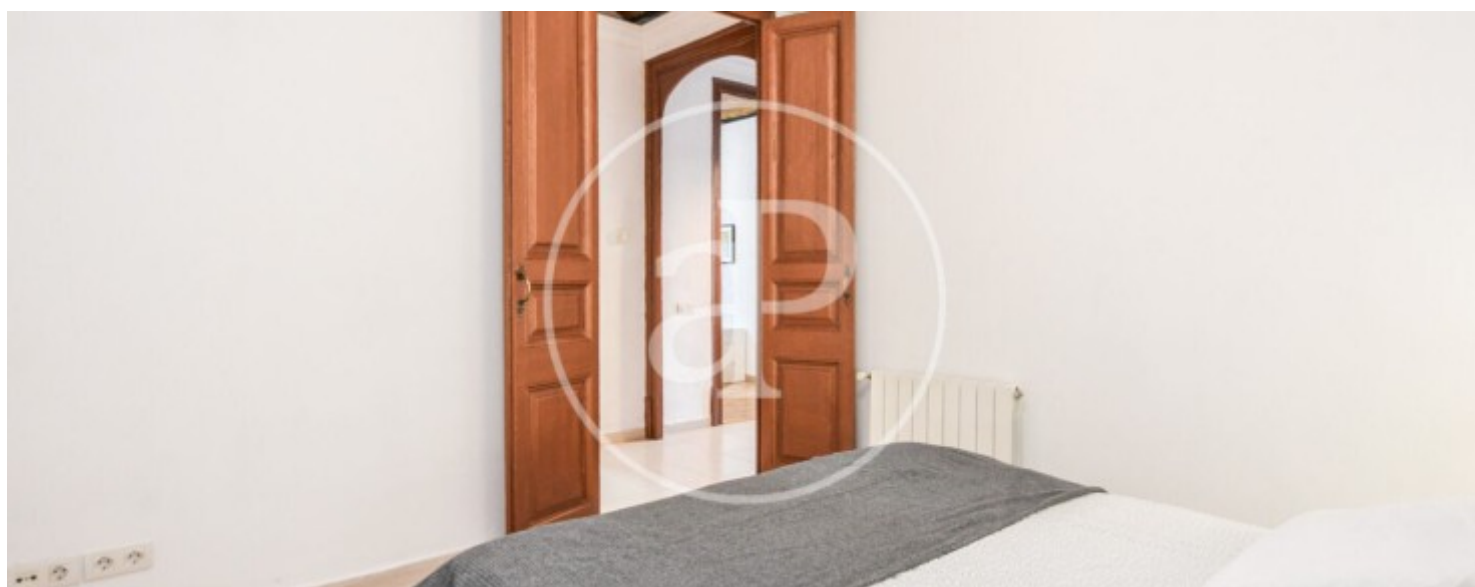
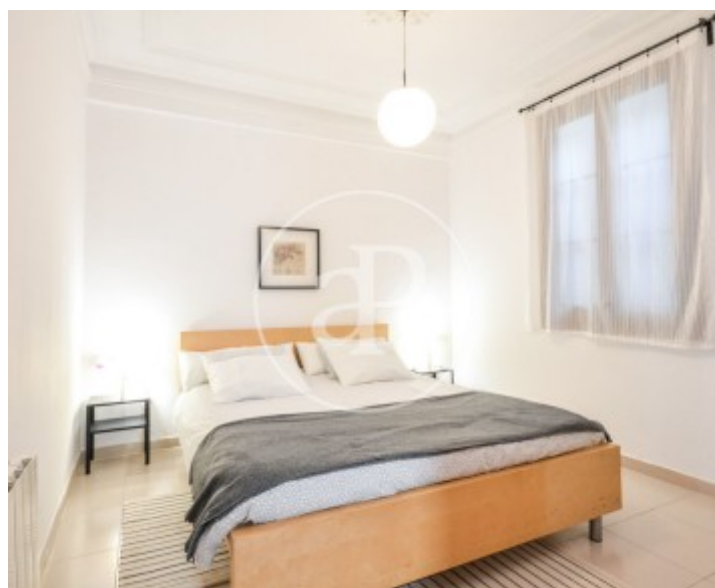
Eixample Dreta, Barcelona

REF. VB2310025



Eixample Dreta, Barcelona

REF. VB2310025





Eixample Dreta, Barcelona

REF. VB2310025



The information about any property is not binding to any offer or contract. Any verbal or written declaration made by aProperties with regards to the value or condition of the property should not be considered accurate or factual. The pictures make reference to some parts of the property at the times that they were taken. The areas, dimensions and distances that are given are approximate and should be checked by the client. The images are computer generated and are just an approximate indication of the real appearance of the property; these may change at any time. The information with regards to the property may also change at any time.

For **more information** or  
to make an appointment

[apropertiesbarcelona@aproperties.es](mailto:apropertiesbarcelona@aproperties.es)  
Tel: 93 528 89 08  
[www.aproperties.es](http://www.aproperties.es)